

NEW TO MARKET

5401 Baumhart Road, Lorain, OH

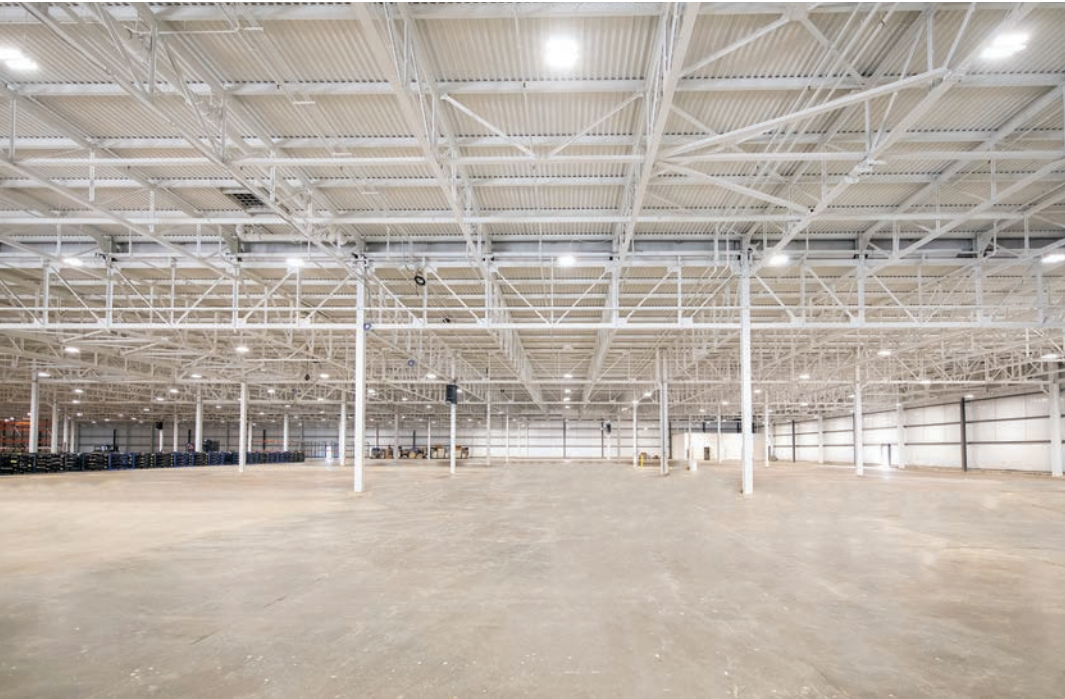
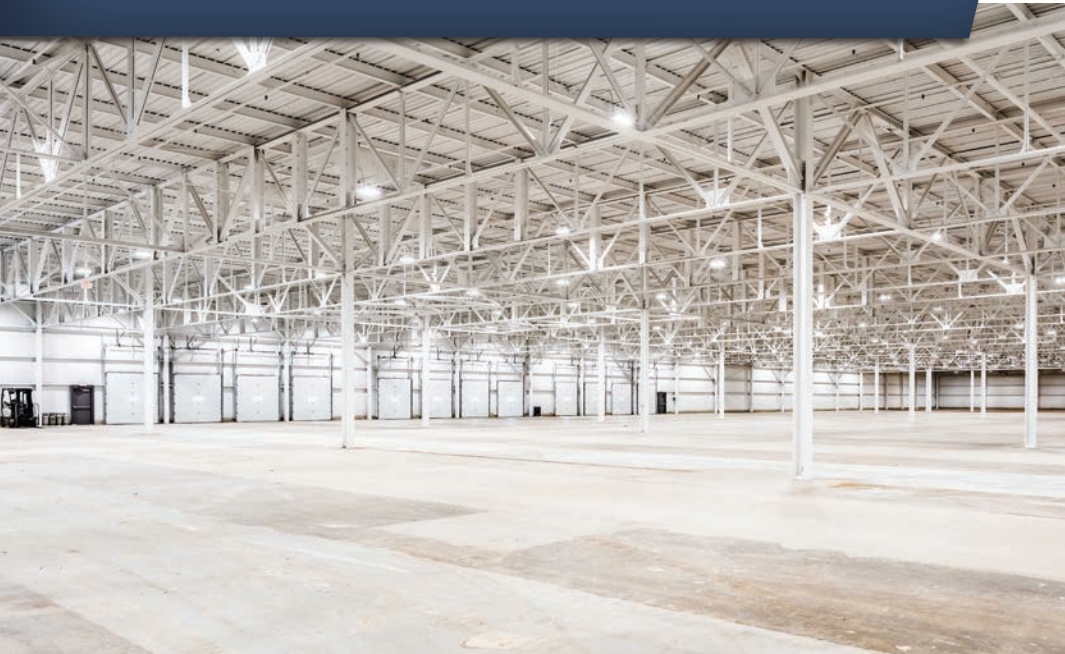


FEATURES

- Suite B - 77,339 SF
- Suite C - 75,576 SF
- Docks: 17 +/-
- ESFR sprinkler
- New LED
- Rail access (CSX Rail)
- New roof
- Outdoor storage
- Within Minutes to I-90/I-80
- Immediate Access to SR 2

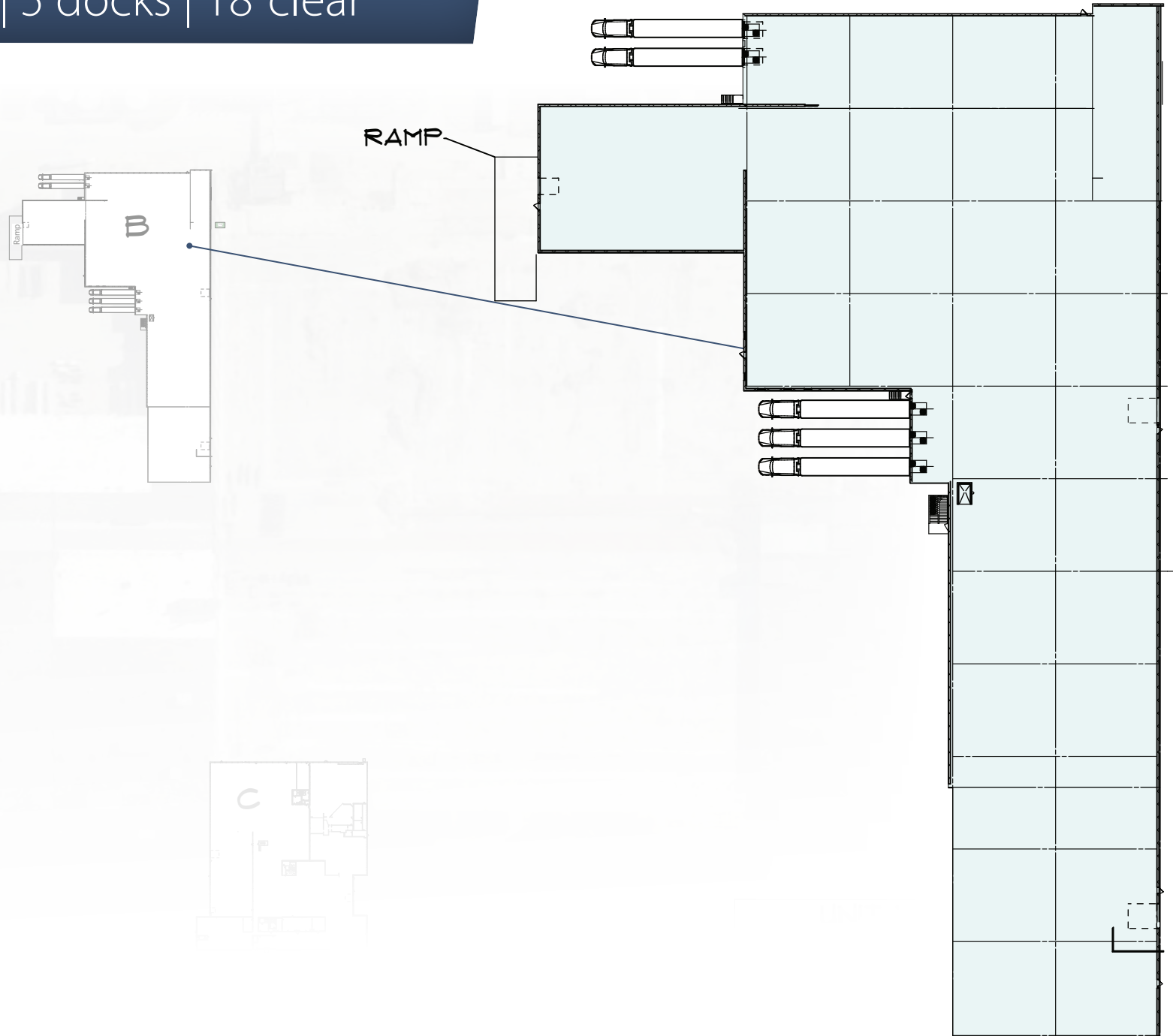
This information has been secured from sources we believe to be reliable, but we make no representations or warranties, expressed or implied, as to the accuracy of the information. References to condition, square footage or age are approximate. Buyer or Tenant acknowledges that they are relying on their own investigations and are not relying on Broker provided information.

NEW TO MARKET



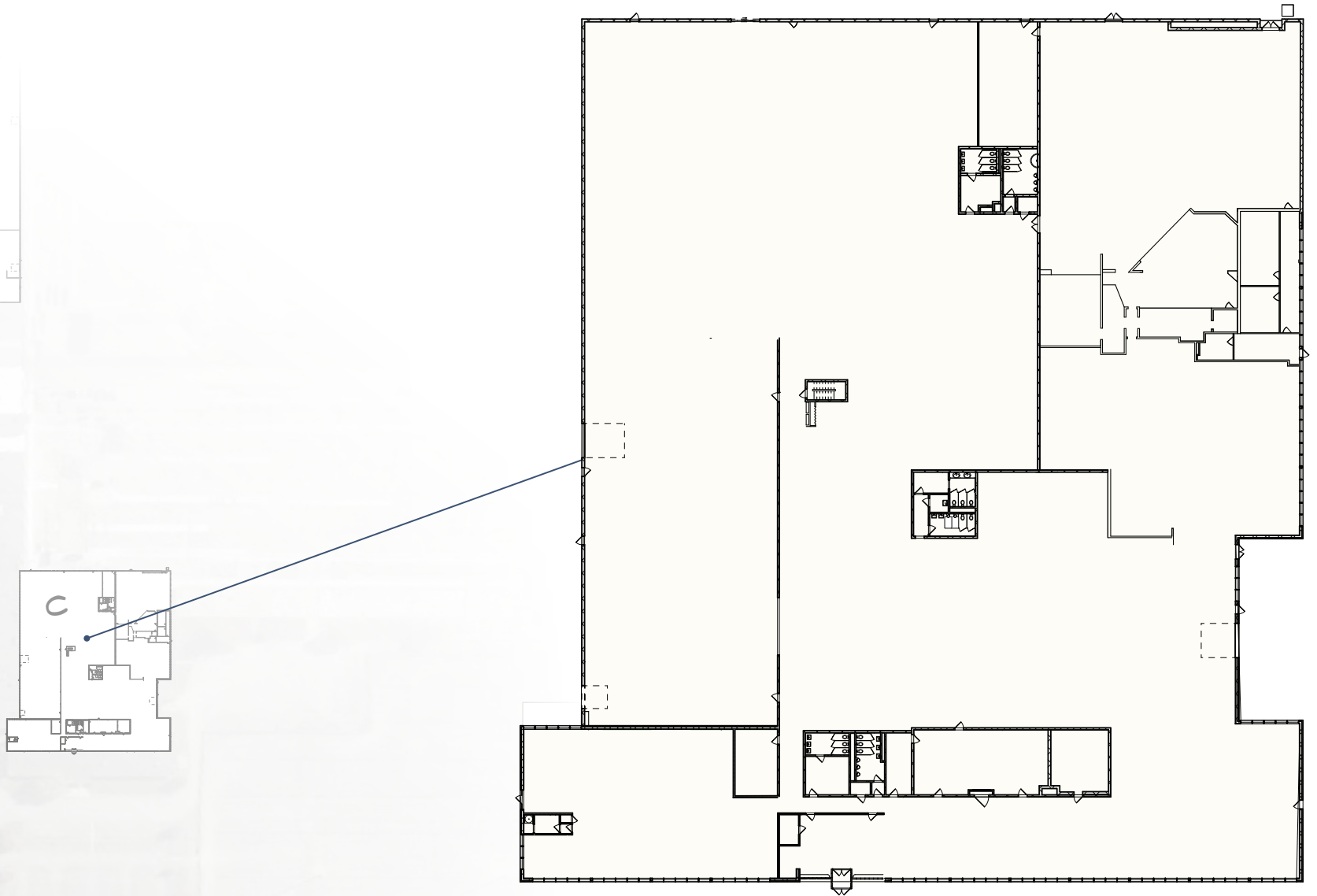
SUITE B

77,339 SF | 5 docks | 18' clear

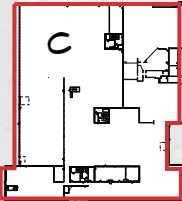
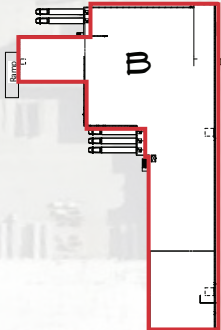


SUITE C

75,576 SF | 12' clear



OVERALL SITE PLAN



UNIT B	77,339 SF
UNIT C	75,516 SF

