

1000 LAKESIDE DRIVE

BANNOCKBURN, IL



56,732 SF
SITUATED ON 10 ACRES
FOR LEASE OR SALE

[HOME](#)

[AVAILABLE](#)

[SITE PLAN](#)

[SURVEY](#)

[AERIAL](#)

[AMENITIES](#)

Sean Kropke
Executive Director
+1 312 424 8284
sean.kropke@cushwake.com

Keith Puritz
Vice Chair
+1 847 720 1366
keith.puritz@cushwake.com



1000 Lakeside Drive

Bannockburn, IL

[HOME](#)[AVAILABLE](#)[SITE PLAN](#)[SURVEY](#)[AERIAL](#)[AMENITIES](#)

Property Highlights:

Building Size:	56,732 SF Available (with expansion land)
Year Built:	1996
Zoning:	O - Office Research District
Car Parking:	359 spaces
2023 Real Estate Taxes:	\$2.61 PSF (\$148,383)
Sale Price:	\$6,950,000 (\$122.50 psf)

Property Overview:

- Building expansion to ±110,000 SF
- Heavy Parking
- Tollway exposure on I-94 at the full interchange of Half Day Rd (Rt. 22) and I-94
- Low Lake County Taxes

Ideal Uses Include:

- Innovation Center
- Headquarter office/warehouse
- Call Center
- R&D/Lab
- Pharma, Life Science, Bio Tech



Sean Kropke
Executive Director
+1 312 424 8284
sean.kropke@cushwake.com

Keith Puritz
Vice Chair
+1 847 720 1366
keith.puritz@cushwake.com

[HOME](#)[AVAILABLE](#)[SITE PLAN](#)[SURVEY](#)[AERIAL](#)[AMENITIES](#)

Concept Warehouse Addition Plan

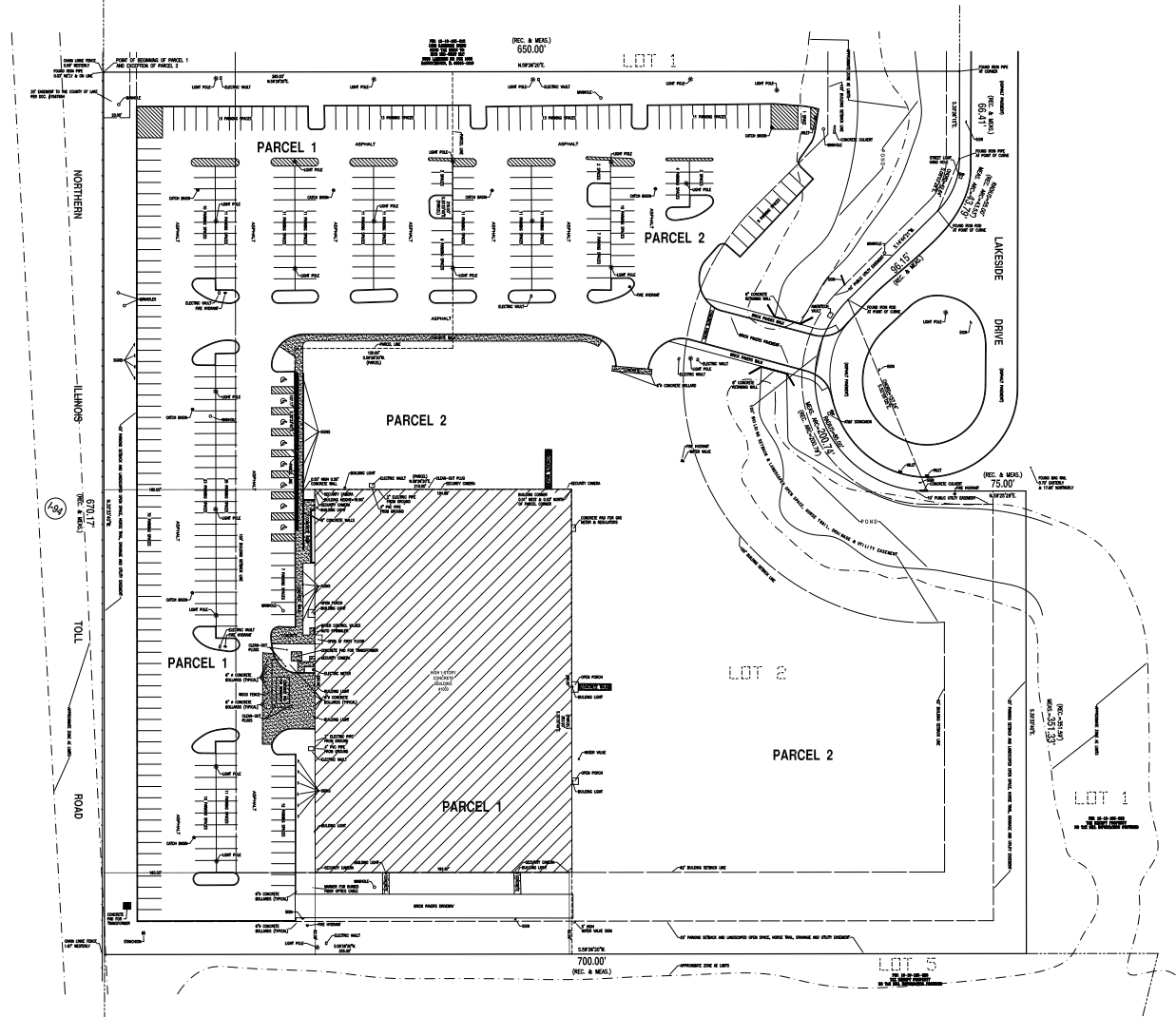


Sean Kropke
Executive Director
+1 312 424 8284
sean.kropke@cushwake.com

Keith Puritz
Vice Chair
+1 847 720 1366
keith.puritz@cushwake.com

[HOME](#)[AVAILABLE](#)[SITE PLAN](#)[SURVEY](#)[AERIAL](#)[AMENITIES](#)

Site Survey



Sean Kropke
Executive Director
+1 312 424 8284
sean.kropke@cushwake.com

Keith Puritz
Vice Chair
+1 847 720 1366
keith.puritz@cushwake.com

1000 Lakeside Drive

Bannockburn, IL



HOME

AVAILABLE

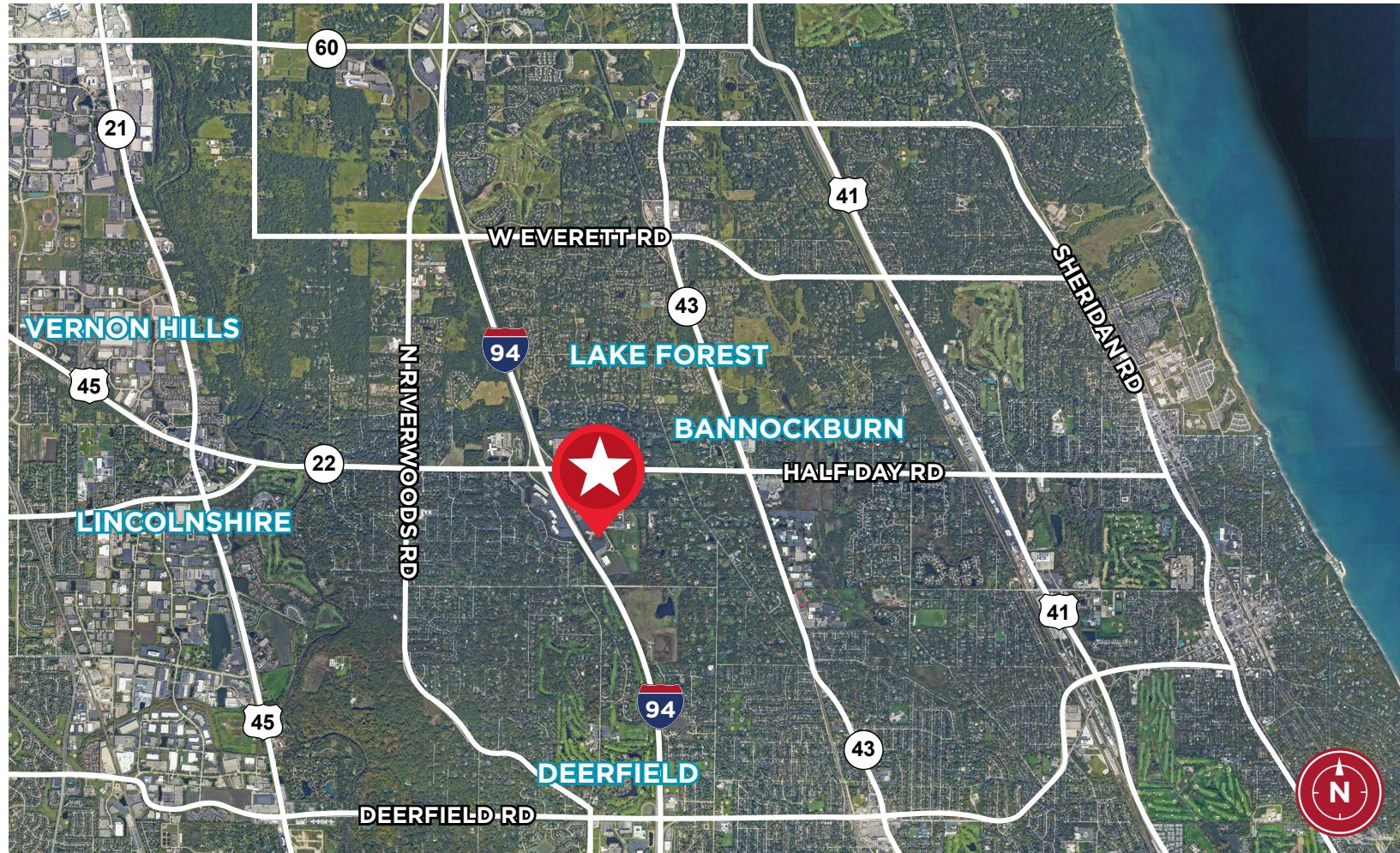
SITE PLAN

SURVEY

AERIAL

AMENITIES

Aerial Map



Sean Kropke
Executive Director
+1 312 424 8284
sean.kropke@cushwake.com

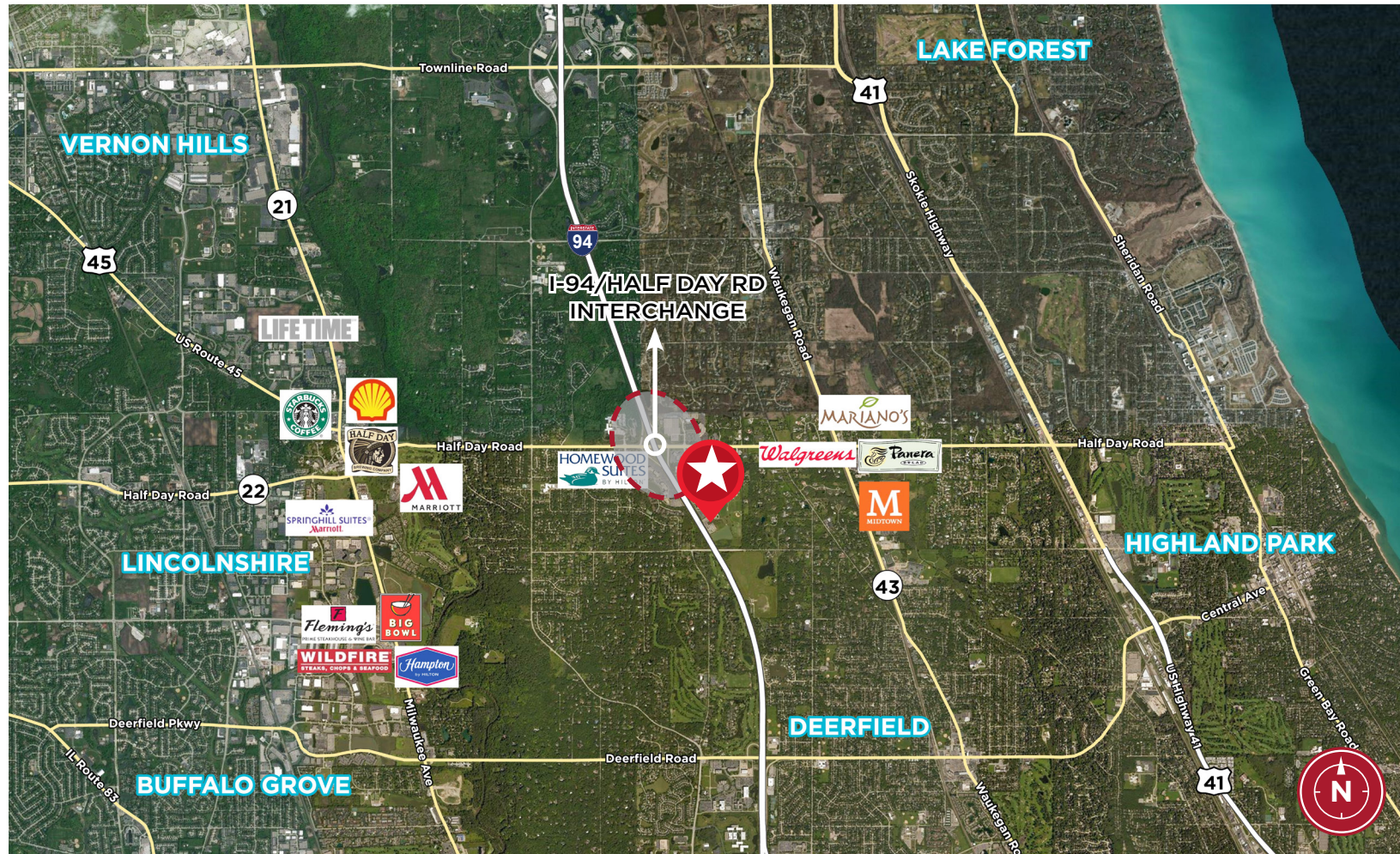
Keith Puritz
Vice Chair
+1 847 720 1366
keith.puritz@cushwake.com

1000 Lakeside Drive

Bannockburn, IL

[HOME](#)[AVAILABLE](#)[SITE PLAN](#)[SURVEY](#)[AERIAL](#)[AMENITIES](#)

Amenities Map



Sean Kropke
Executive Director
+1 312 424 8284
sean.kropke@cushwake.com

Keith Puritz
Vice Chair
+1 847 720 1366
keith.puritz@cushwake.com

©2024 Cushman & Wakefield. All rights reserved. The information contained in this communication is strictly confidential. This information has been obtained from sources believed to be reliable but has not been verified. NO WARRANTY OR REPRESENTATION, EXPRESS OR IMPLIED, IS MADE AS TO THE CONDITION OF THE PROPERTY (OR PROPERTIES) REFERENCED HEREIN OR AS TO THE ACCURACY OR COMPLETENESS OF THE INFORMATION CONTAINED HEREIN, AND SAME IS SUBMITTED SUBJECT TO ERRORS, OMISSIONS, CHANGE OF PRICE, RENTAL OR OTHER CONDITIONS, WITHDRAWAL WITHOUT NOTICE, AND TO ANY SPECIAL LISTING CONDITIONS IMPOSED BY THE PROPERTY OWNER(S). ANY PROJECTIONS, OPINIONS OR ESTIMATES ARE SUBJECT TO UNCERTAINTY AND DO NOT SIGNIFY CURRENT OR FUTURE PROPERTY PERFORMANCE.