



4741 IBERIA AVENUE

Dallas, Texas 75207

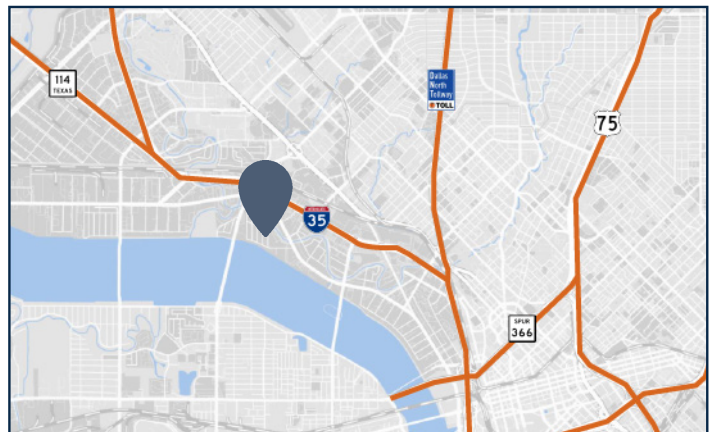


PROJECT FACTS

- >> 9,600 SF Building
- >> Recently Renovated
- >> 100% HVAC
- >> Dock High Door
- >> Convenient Access to 1-35, I-30, Hwy 183 and Irving Boulevard

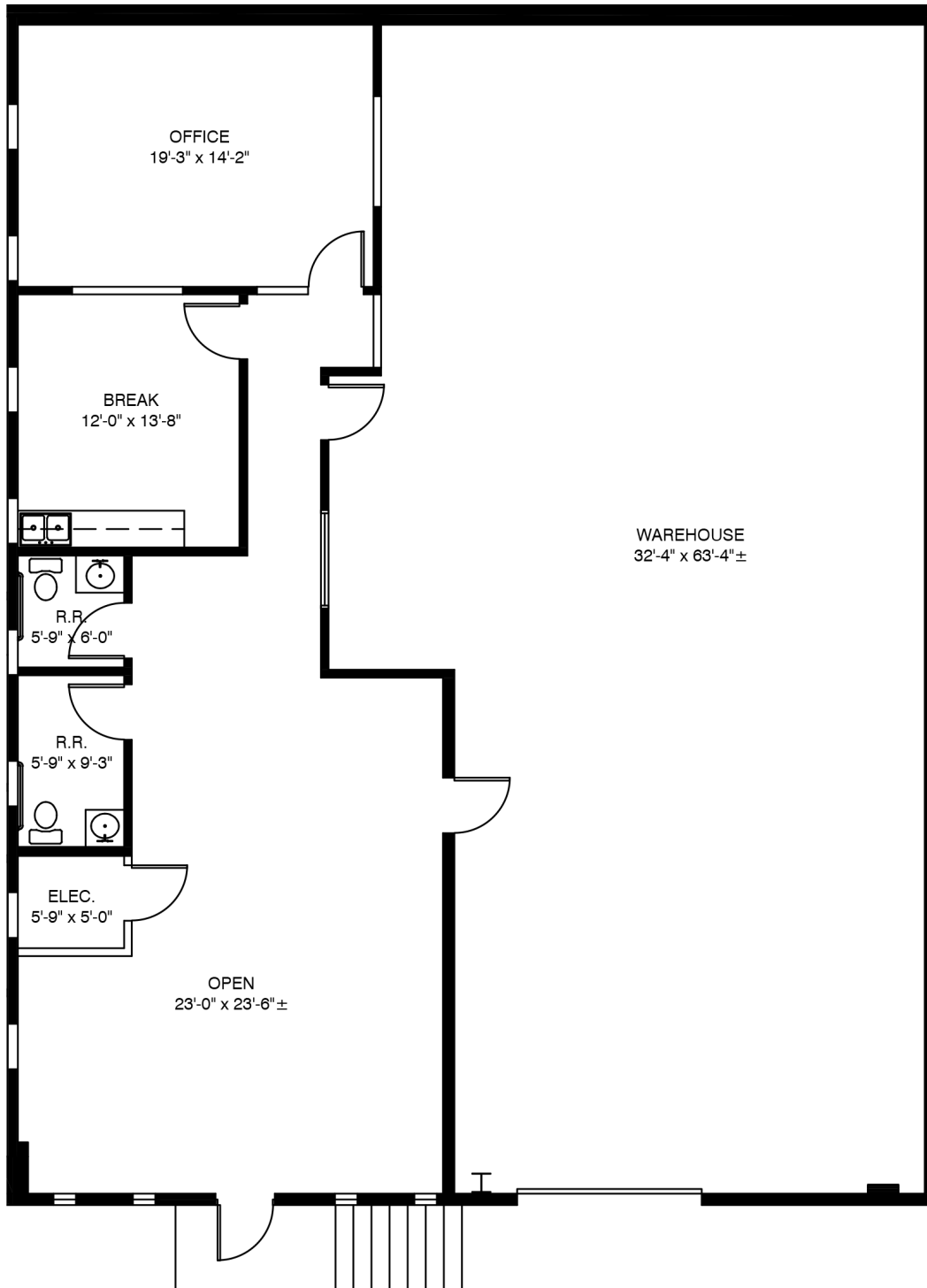
CONTACT FOR INFORMATION

- >> Austin Busse
972.354.8084
abusse@dogwoodcommercial.com
- >> Andrew Crain
972.942.8609
acrain@dogwoodcommercial.com



SUITE C - 3,256 RSF

4741 Iberia Avenue, Dallas, Texas 75207



DOGWOOD
COMMERCIAL

Austin Busse
abusse@dogwoodcommercial.com
972.354.8084

Andrew Crain
acrain@dogwoodcommercial.com
972.942.8609