

1875 STOUT DRIVE

IVYLAND, PA 18974

LOCATED
NEAR RETAIL
OUTLETS & BOX
STORES



EXCLUSIVELY
REPRESENTED BY
THE FLYNN COMPANY

21,917 SF CRANE SERVED WAREHOUSE

AVAILABLE FOR SALE

MICHAEL BORSKI JR., SIOR
MBORSKIJR@FLYNNCO.COM
215-561-6565 X 119

PROPERTY OVERVIEW

- 21,917 SF partial two-story warehouse
- 1,300 SF mezzanine
- 10% Office
- 14-31' clear
- 5-Ton crane in 31' clear warehouse section
- One drive-in door
- Two oversize loading dock doors
- Fully conditioned
- Public water & sewer
- 800 minimum Amps, 3 Phase (480 & 208 volt)
- Available April 1, 2025
- Zoned LI: Limited Industrial, Warwick Township

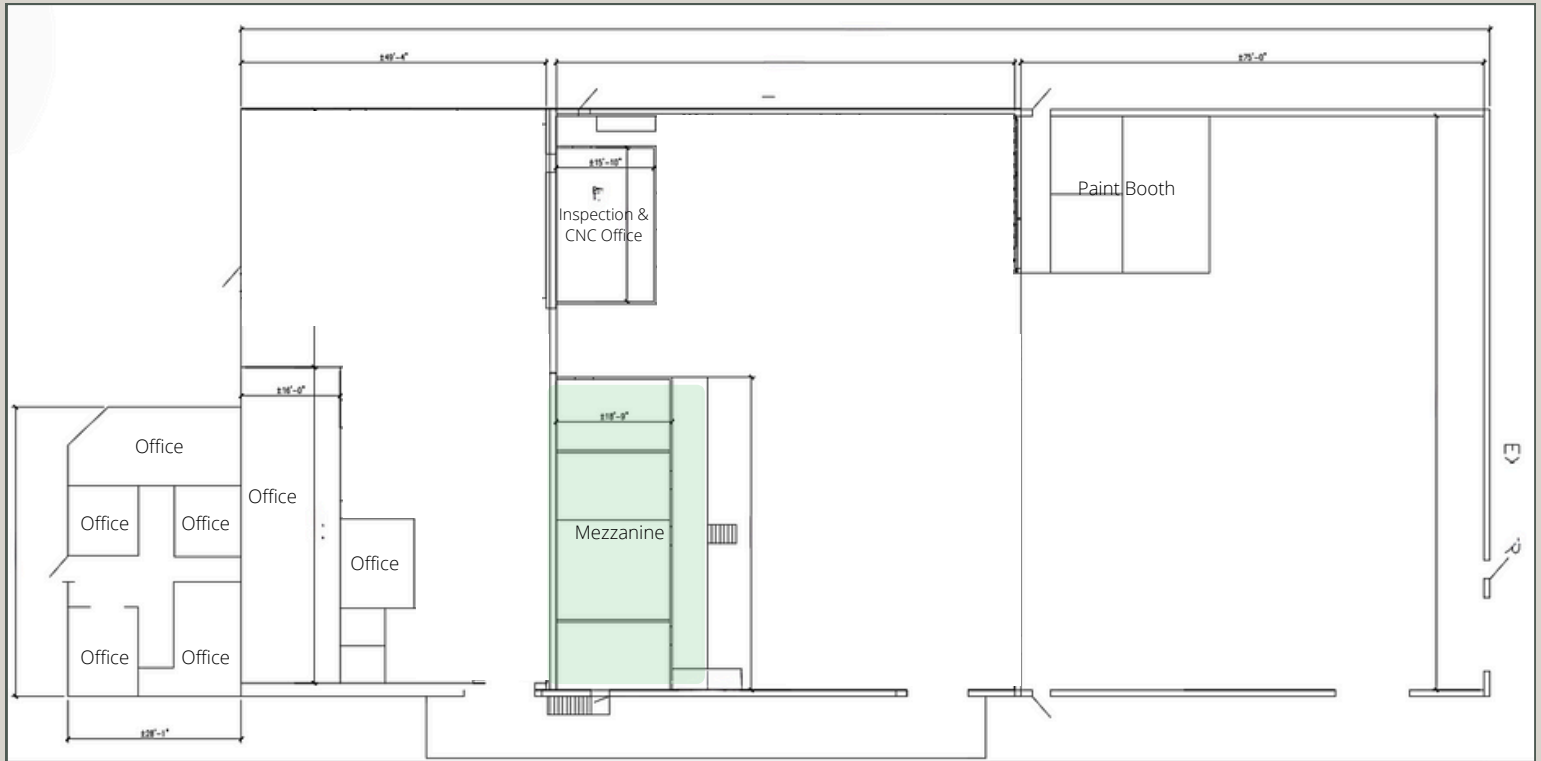
MARK PAWLOWSKI
MPAWLOWSKI@FLYNNCO.COM
215-561-6565 X 118

The
Flynn
Company

THE FLYNN COMPANY

WWW.FLYNNCO.COM | 1621 WOOD STREET, PHILADELPHIA, PA 19103 | 215.561.6565

SITE & FLOOR PLAN



PROPERTY PHOTOS



SITE MAP



LOCATION



For More Information
Please Contact:

MICHAEL BORSKI JR., SIOR
MBORSKIJR@FLYNNCO.COM
215-561-6565 X 119

MARK PAWLOWSKI
MPAWLOWSKI@FLYNNCO.COM
215-561-6565 X 118