

FOR SALE

RESTAURANT REAL ESTATE

712 STATE HWY 55 HAMEL, MN



COLDWELL BANKER
COMMERCIAL
REALTY



Price
\$675,000

Property Features

- ❖ Almost 1800 sq ft w/ Full Kitchen
- ❖ 12'ft Commercial Hood
- ❖ Walk-in Cooler
- ❖ Smoker, steamer, grill & 4 top stove
- ❖ 2 Bathrooms
- ❖ Parking lot w/2 driveways .46 acres
- ❖ Some restaurant equipment included





Biz For Sale ADD; \$90k

- ❖ Chuckwagon Catering
- ❖ Customer list
- ❖ Comes with some equipment



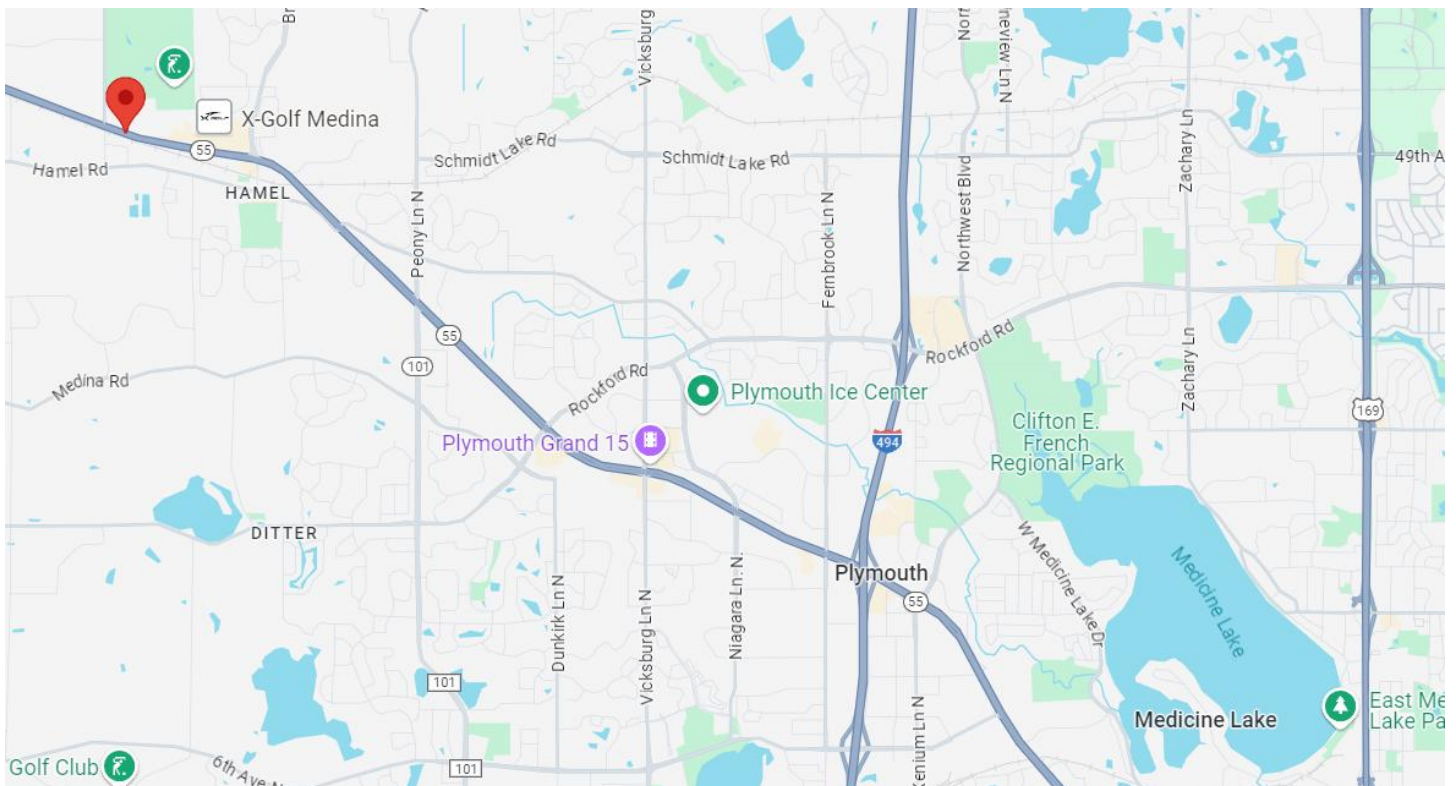
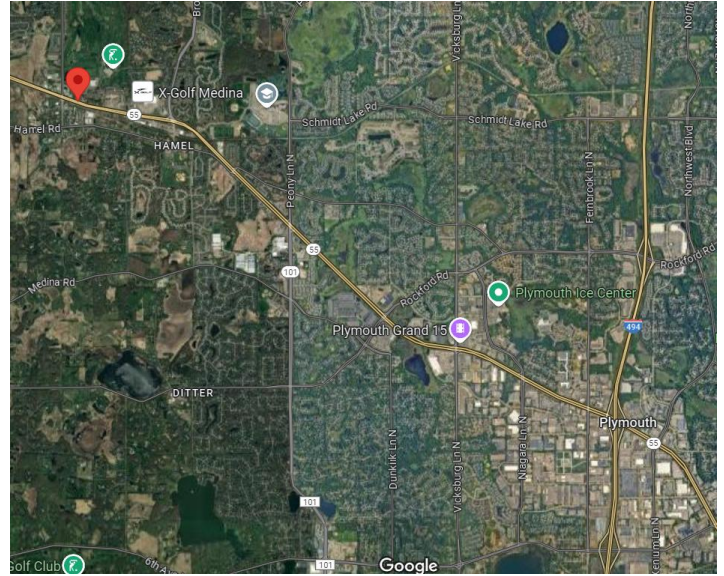
- ❖ Busy Hwy 55 area.
- ❖ Busy industrial area
- ❖ Lots of residential housing being built



5 Mile Area Demographics

- ❖ Population:
90,428
- ❖ Median Household Income:
\$149,359
- ❖ Median Home Value:
\$675,000
- ❖ Traffic: Hwy 55 VPD 26,342

712 State Hwy 55 Hamel, MN 55340



Craig Weber (612) 968-0839
E) craig.weber@cbburnet.com



COLDWELL BANKER
COMMERCIAL
REALTY

Coldwell Banker Commercial / JAC Commercial Group

Craig Weber (612)-968-0839 craig.weber@cbburnet.com

Allan Zolin (651)-341-8196 allan.zolin@cbrealty.com