

1124 PARK WEST BLVD

Suites 102 & 205 | MT PLEASANT, SC 29466



OFFICE SPACES FOR LEASE

Contact us:

Michael Paragano
michael@paragano.com
843-569-3000

NOVA
management, inc.

1124 PARK WEST BLVD

Suites 102 & 205 | MT PLEASANT, SC 29466

PROPERTY INFORMATION

TAX MAP ID	540-00-00-150
COUNTY	CHARLESTON
MUNICIPALITY	TOWN OF MOUNT PLEASANT
YEAR BUILT	2008
ZONING	PD
NUMBER OF FLOORS	2

PROPERTY HIGHLIGHTS

Office space for lease on Park West Blvd in North Mount Pleasant approximately 0.2 miles off of Hwy 17. Nestled in the Park West Subdivision, this building is located in close proximity to neighborhood retail stores, a Publix supermarket, public schools, and newly developed Carolina Park Subdivision. Location, location, location!

Unit 102 is located on the first floor of the office building while Unit 205 is located on the second floor with access to an elevator and stairwell.

OFFERINGS

SUITE	SIZE	LEASE RATE	LEASE TYPE	AVAILABLE
102	~2,032 SF	call to inquire	Mod. Gross	June 2025
205	~1,697 SF	call to inquire	Mod. Gross	April 2025



Suite 102 | MT PLEASANT, SC 29466

The floor plan shows the following areas and dimensions:

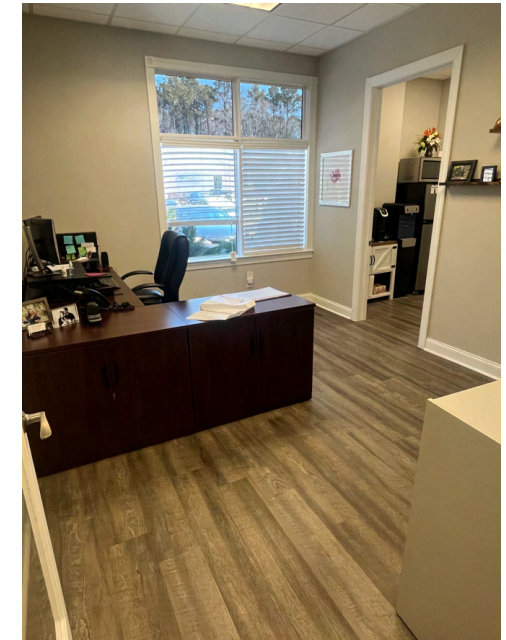
- Lease Space - 11**: 15' 1" x 13' 2" (15'-4" wide)
- Lease Space - 10**: 21' 7" x 11' 7" (21'-8" wide)
- Lease Space - 9**: 12' 8" x 12' 10" (10'-8 1/2" high)
- Lease Space - 8**: 17' 7" x 11' 0" (11'-0" high)
- Lease Space - 7**: 11' 0" x 14' 3" (11'-5" wide)
- Lease Space - B**: 11'-5" wide
- Reception Area 6**: 9' 0" x 7' 7" (9'-10" wide)
- Break Room 6.4**: 9' 0" x 6' 8" (9'-0" high)
- Hall**: 9'-0" wide
- Reception desk (NTS)**: 9'-0" wide
- Storage**: 3'-5" wide
- AC4**: near A/C
- Mech. 2**

Door swing indicators are shown with numbers 114, 115, 116, 117, 118, 119, 120, and 121. A note indicates to "replace existing door" for a door at the bottom left.

NOVA
management, inc.

1124 PARK WEST BLVD
Suite 102 | MT PLEASANT, SC 29466

SUITE PHOTOS



NOVA
management, inc.

1124 PARK WEST BLVD

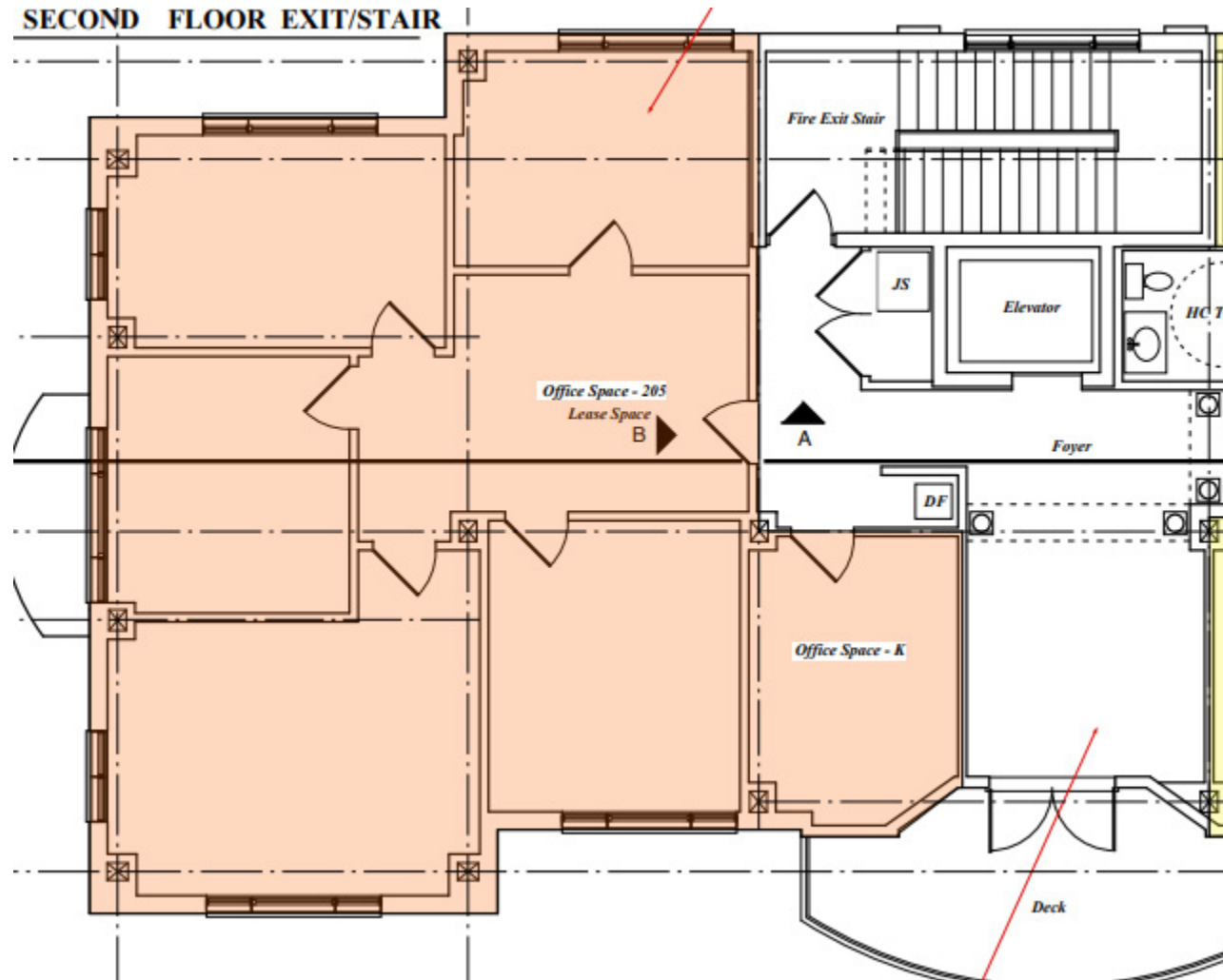
Suite 102 | MT PLEASANT, SC 29466

ADDITIONAL INFORMATION

- Beautiful, newly renovated suite.
- Four executive offices (furniture available).
- Large executive conference room is plug and play, including the boardroom table set up.
- Private kitchenette area located within the suite.

1124 PARK WEST BLVD
Suite 205 | MT PLEASANT, SC 29466

Floorplan



1124 PARK WEST BLVD
Suite 205 | MT PLEASANT, SC 29466

SUITE PHOTOS



1124 PARK WEST BLVD

Suite 205 | MT PLEASANT, SC 29466

ADDITIONAL INFORMATION

- **Four private offices and a private reception area with a conference room.**
- **Fully renovated, turnkey suite.**
- **Some furniture can be included in the lease agreement.**

1124 PARK WEST BLVD
Suites 102 & 205 | MT PLEASANT, SC 29466

COMMON AREAS



1124 PARK WEST BLVD

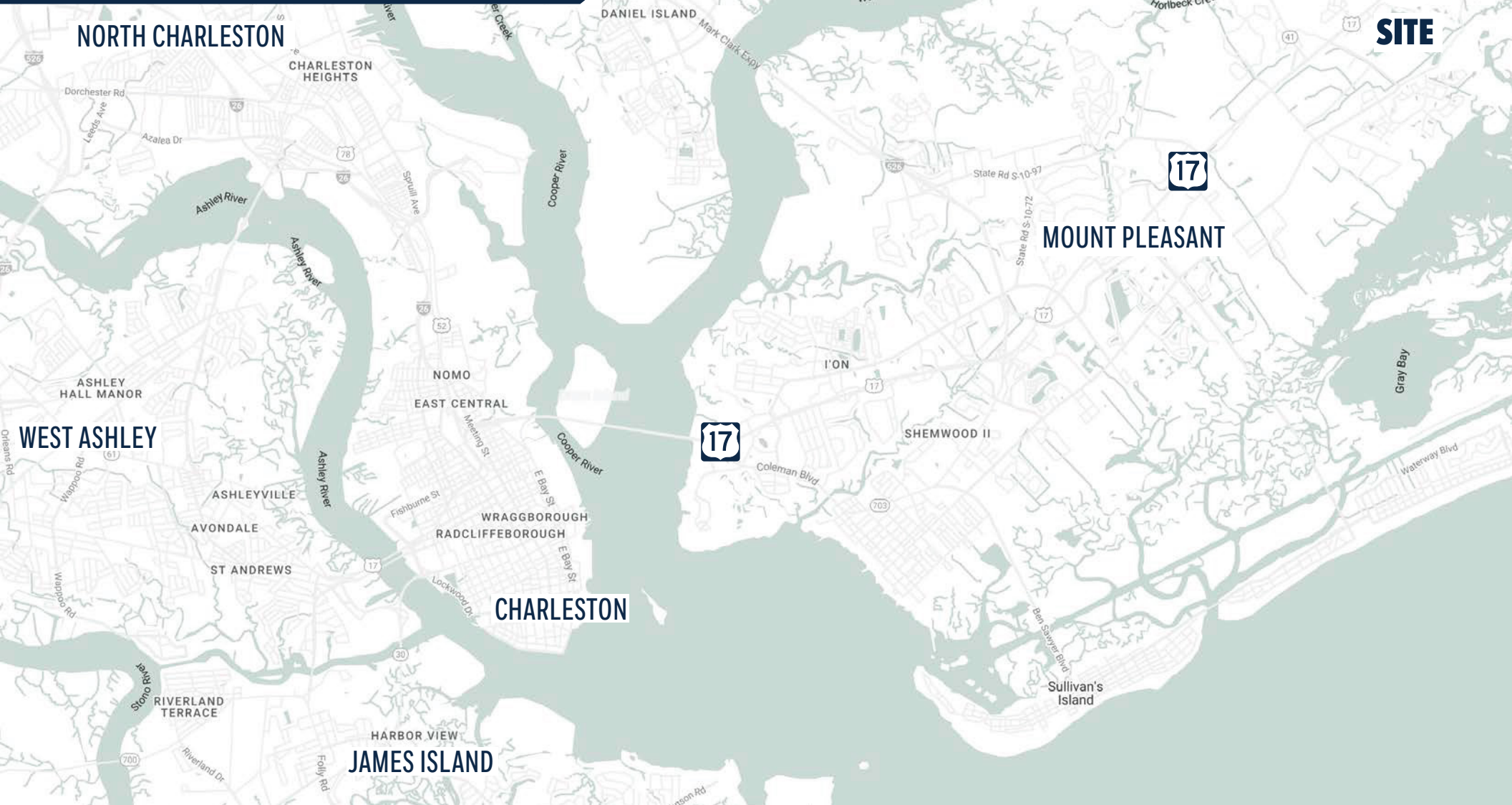
Suites 102 & 205 | MT PLEASANT, SC 29466



NOVA
management, inc.

1124 PARK WEST BLVD

Suites 102 & 205 | MT PLEASANT, SC 29466



1124 PARK WEST BLVD

Suites 102 & 205 | MT PLEASANT, SC 29466

AMENITIES MAP



1124 PARK WEST BLVD

Suites 102 & 205 | MT PLEASANT, SC 29466

DEMOGRAPHICS

ONE MILE

THREE MILE

FIVE MILE



POPULATION

3,668

32,854

57,666



TOTAL BUSINESSES

440

1,133

12,284



MEDIAN AGE

45

44.1

43.8



AVG HOUSEHOLD INCOME

\$128,811

\$132,971

\$132,266