



# WESTWOOD BUSINESS PARK

## FLEX FOR LEASE • 5,067 - 11,033 SF AVAILABLE

1801 Royal Lane and 11482 & 11488 Luna Road Dallas, Texas 75229

### Property Highlights

- 1801 Royal Lane
  - Suite 100 - 9,714 sf
  - Suite 250 - 8,205 sf
  - Suite 600 - 11,033 sf
  - Suite 704 - 5,067 sf
- 11482 Luna
  - Suite 100 - 5,511 sf
- 100% air-conditioned spaces
- End-cap spaces available
- Grade level loading & dock high doors
- Floor-to-ceiling windows with plenty of natural light
- Located at the corner of Royal Lane and Luna Road
- Easy access to I-635 and I-35E



Owned by:



Leased by:



Jason Finch

972.389.9006

[jfinch@bradford.com](mailto:jfinch@bradford.com)

The information contained herein was obtained from sources believed reliable; however, Bradford Companies makes no guarantees, warranties, or representation as to the completeness or accuracy thereof.

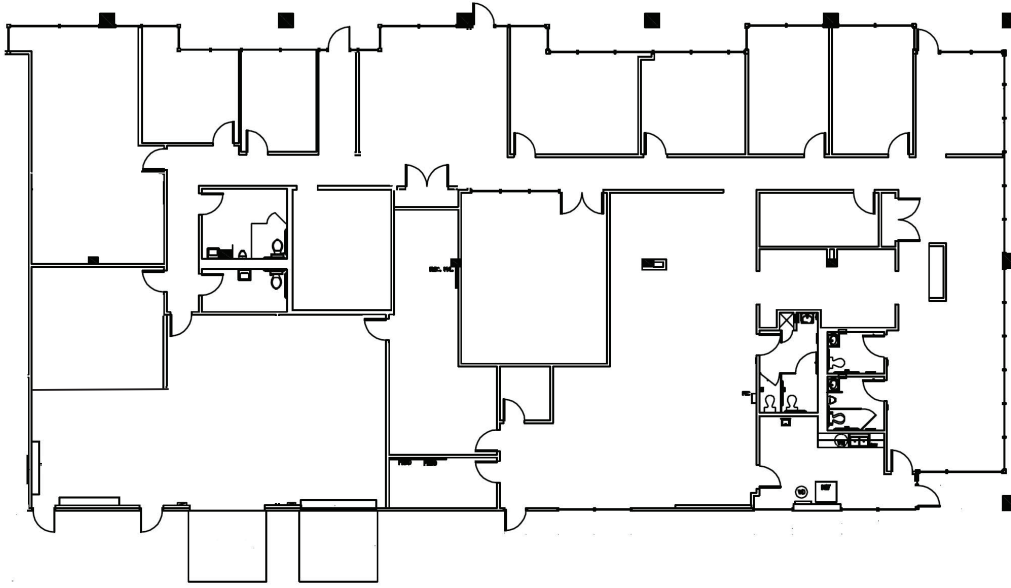
# WESTWOOD BUSINESS PARK BLDG 1

1801 ROYAL LANE, DALLAS, TEXAS 75229

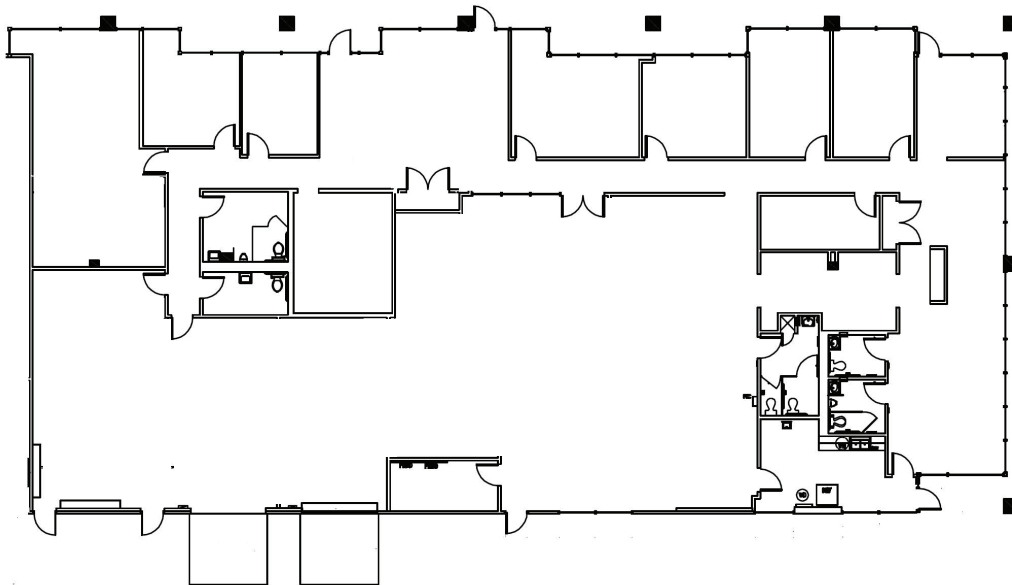


SUITE 100 - 9,714 RSF

## EXISTING FLOOR PLAN



## PROPOSED FLOOR PLAN



Jason Finch

972.389.9006

jfinch@bradford.com

Bradford Commercial Real Estate Services

www.bradford.com





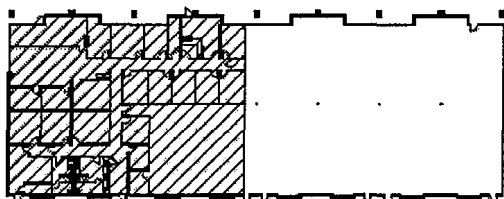
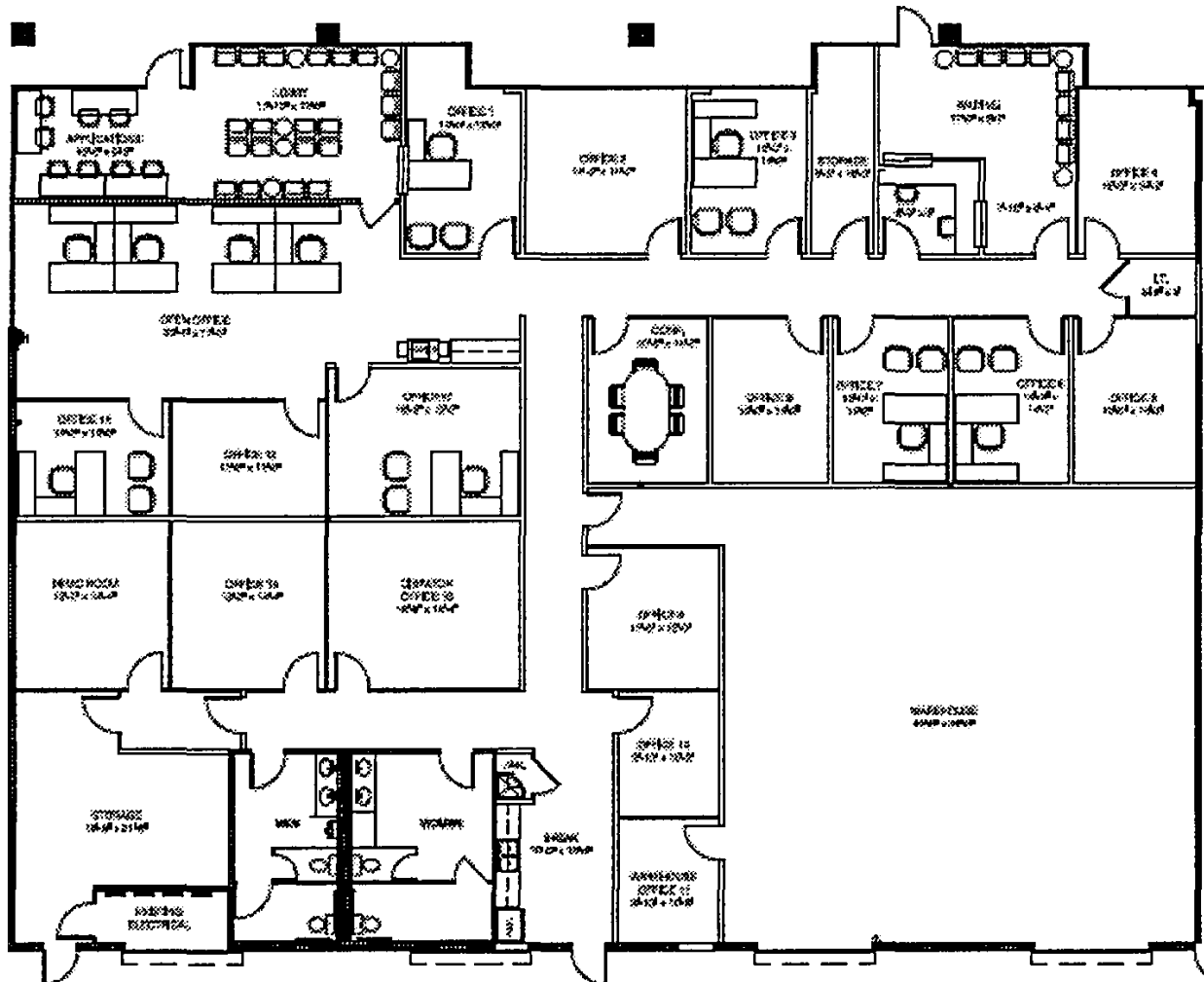
# WESTWOOD BUSINESS PARK BLDG 2

1801 ROYAL LANE, DALLAS, TEXAS 75229



## SUITE 250 - 8,205 RSF

- Two (2) grade level doors



# WESTWOOD BUSINESS PARK BLDG 6

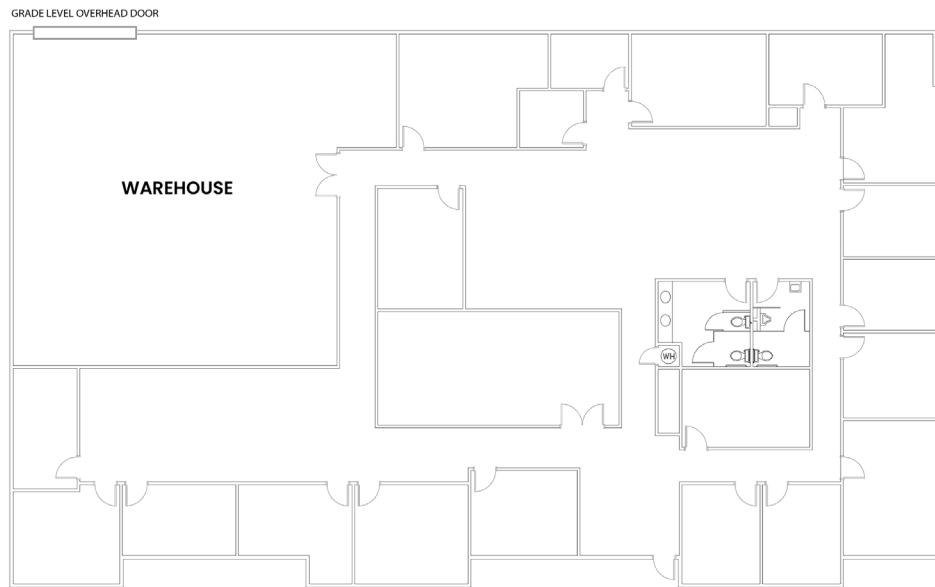
1801 ROYAL LANE, DALLAS, TEXAS 75229



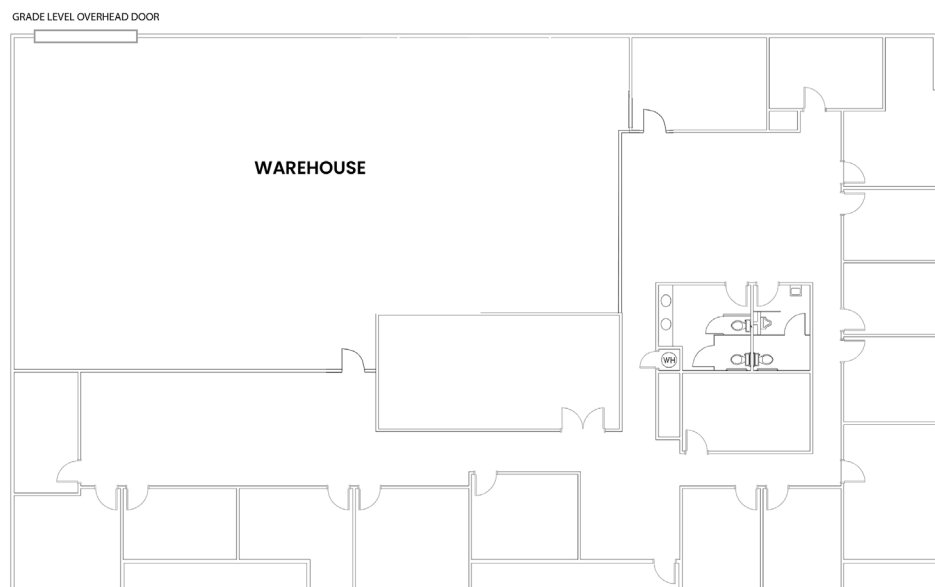
## SUITE 600 - 11,033 RSF

- ONE (1) GRADE LEVEL OVERHEAD DOOR
- 14' CLEAR HEIGHT

### EXISTING FLOOR PLAN



### PROPOSED FLOOR PLAN



Jason Finch

972.389.9006

jfinch@bradford.com

Bradford Commercial Real Estate Services  
www.bradford.com



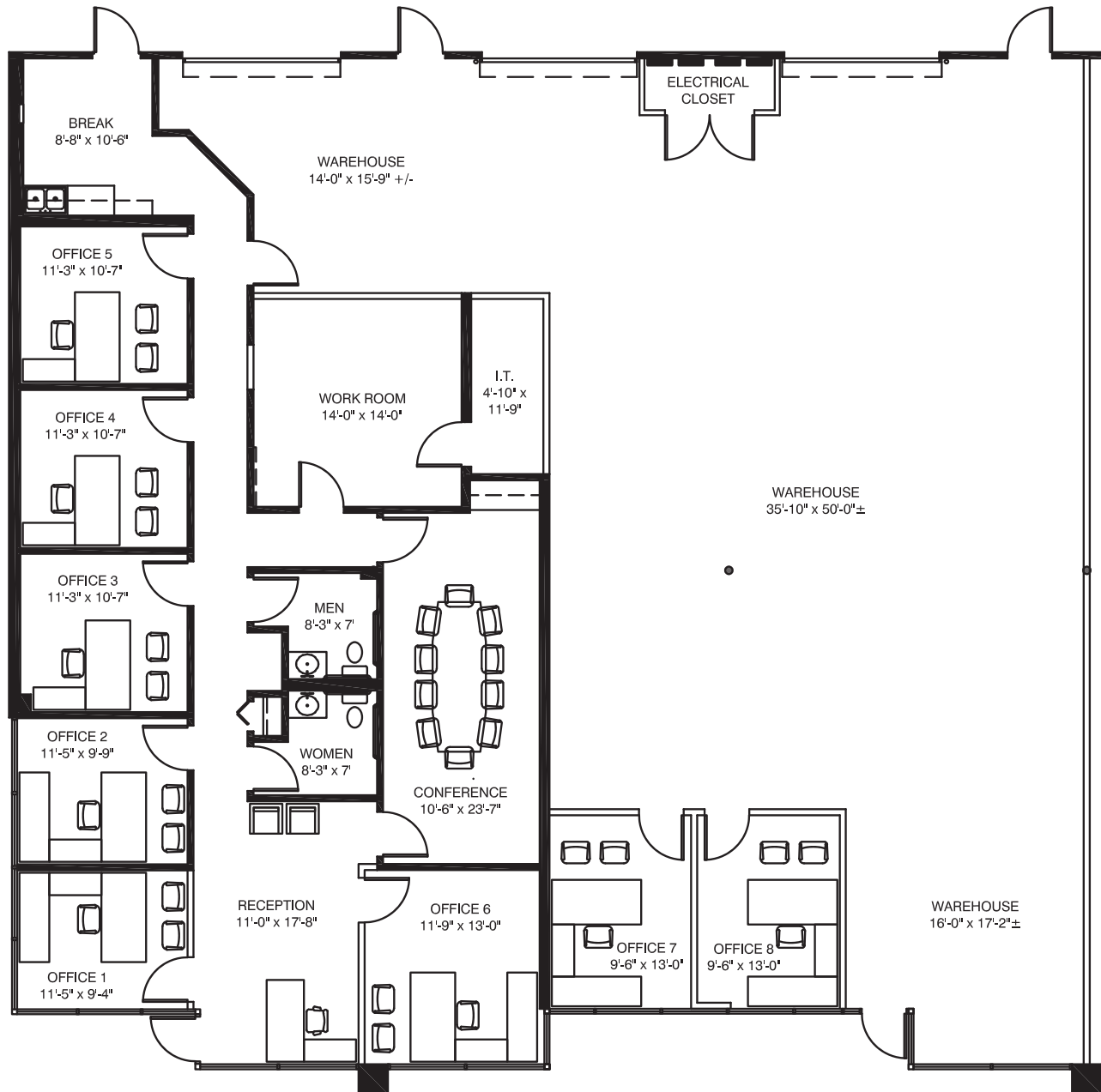
# WESTWOOD BUSINESS PARK BLDG 7

1801 ROYAL LANE, DALLAS, TEXAS 75229



## SUITE 704 - 5,067 RSF

- End cap space
- Three (3) grade level doors
- Office: 2,835 SF
- Warehouse: 2,232 SF



Jason Finch

972.389.9006

jfinch@bradford.com

Bradford Commercial Real Estate Services

www.bradford.com



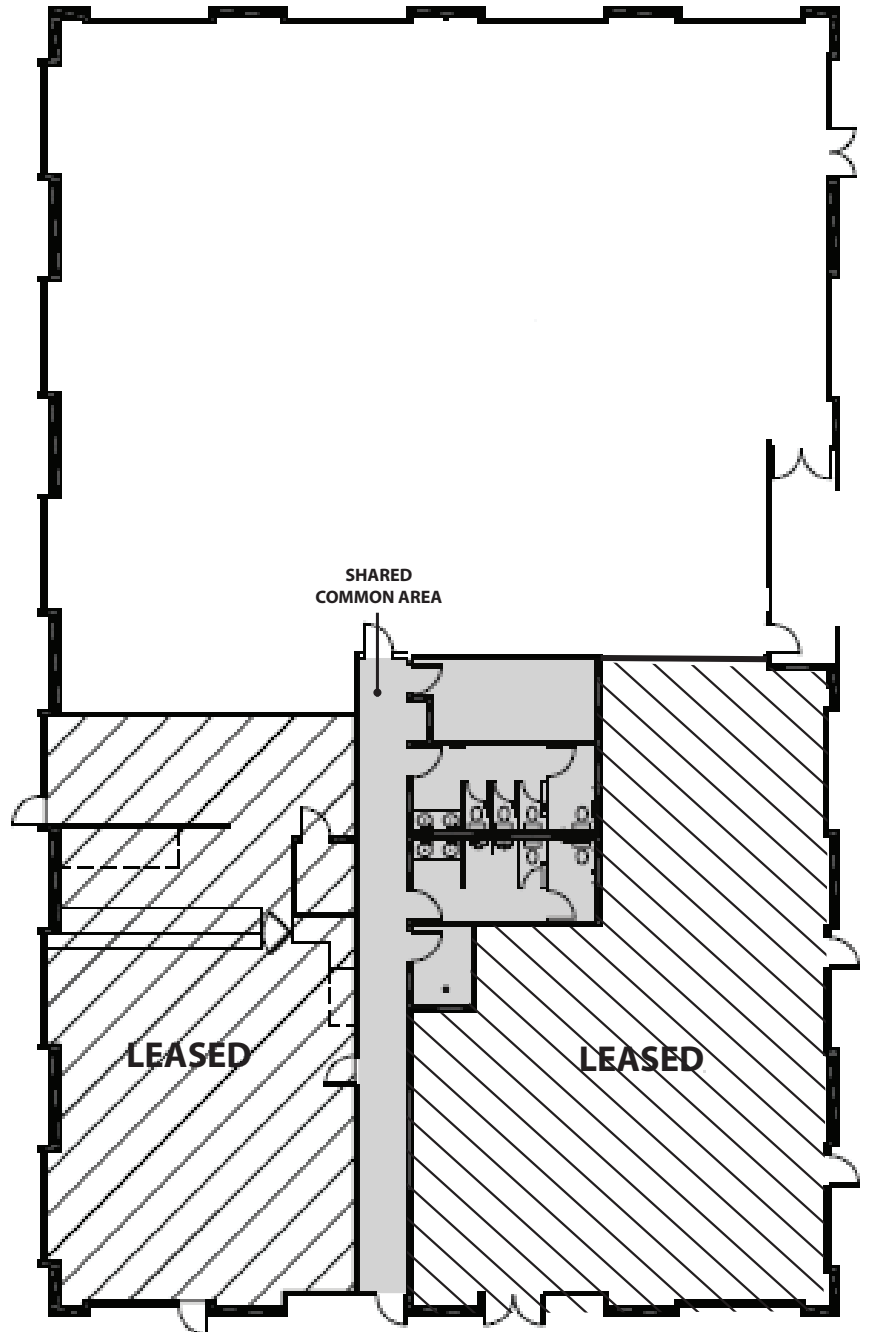
# WESTWOOD BUSINESS PARK

11482 LUNA ROAD, DALLAS, TEXAS 75229



## SUITE 100 - 5,511 RSF

- OFFICE BTS
- WIDE-OPEN LAYOUT CURRENTLY
- 100% HVAC
- 12' CLEAR HEIGHT



**Jason Finch**

972.389.9006

jfinch@bradford.com

Bradford Commercial Real Estate Services  
www.bradford.com



