

LEASE

Hualalai Center

75-170 HUALALAI ROAD

Kailua Kona, HI 96740

PRESENTED BY:

GREGORY OGIN

O: 808.329.6446

gogin@svn.com

HI #RB-16053

SUSIE SCRIBNER

O: 805.403.0301

susie.scribner@svn.com

Hawaii #RS-84227

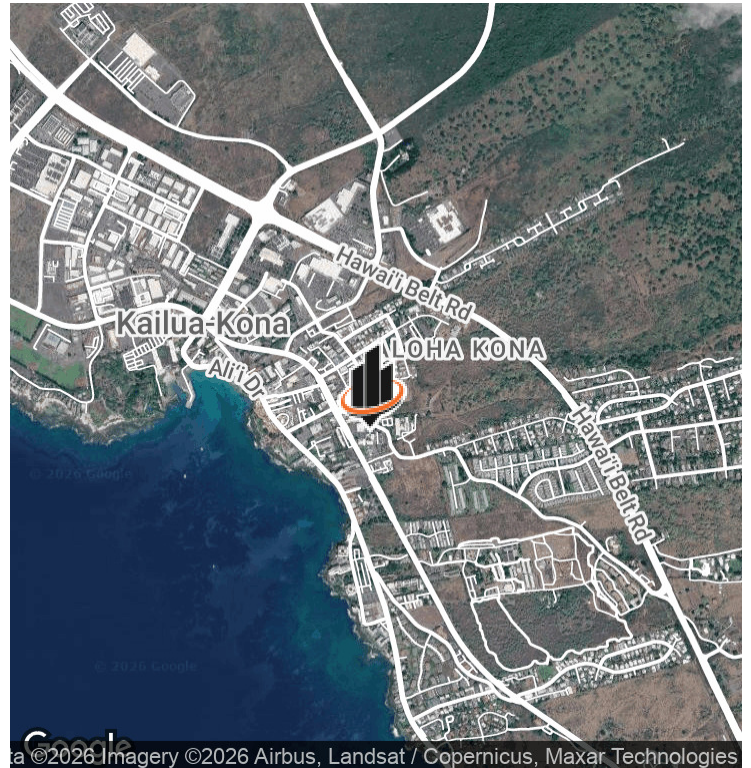


HUALALAI CENTER

4100 Cheam & Berly Land	0110 W.P. Mortgage	0110 West Home Realty
0102 D&F Postal Services Inc.	0111 Valley Capital Advisors	0110 Americanize Financial
0104 Hawaiian Bank Center of Hawaii	0210 Wils Research Service	0110
0105	0200 State of Hawaii SOGA	0111 Island Street/Coastal Medical
0106 K. K. K. P.L.L.C.	0201 Hawaii Island Recovery	0110
0107	0112	0214 Pacific Petroleum
0108 Land and Survey of Hawaii	0114 Kona Coast Realty	0216 Pacific Vantage
0109 Cedar Valley Corp	0116 Robert Family Bankery	



PROPERTY SUMMARY



OFFERING SUMMARY

LEASE RATE:	\$3.25 SF/month (Gross)
NUMBER OF UNITS:	31
AVAILABLE SF:	638 - 1,898 SF
LOT SIZE:	1.49 Acres
BUILDING SIZE:	60,513 SF

PROPERTY DESCRIPTION

Multiple tenant professional and medical office complex located in the heart of Kona near restaurants, retailers and other business offices. Located between Hualalai Road and Kuakini Highway with great street visibility and walkability to Alii Drive and the oceanfront.

PROPERTY HIGHLIGHTS

- Multiple tenant professional and medical complex
- Central location with great street visibility
- Well manicured grounds
- ADA accessible
- Plenty of available parking
- Full time, on site maintenance and management

GREGORY OGIN

O: 808.329.6446

gogin@svn.com

HI #RB-16053

SUSIE SCRIBNER

O: 805.403.0301

susie.scribner@svn.com

Hawaii #RS-84227

ADDITIONAL PHOTOS



GREGORY OGIN

O: 808.329.6446

gogin@svn.com

HI #RB-16053

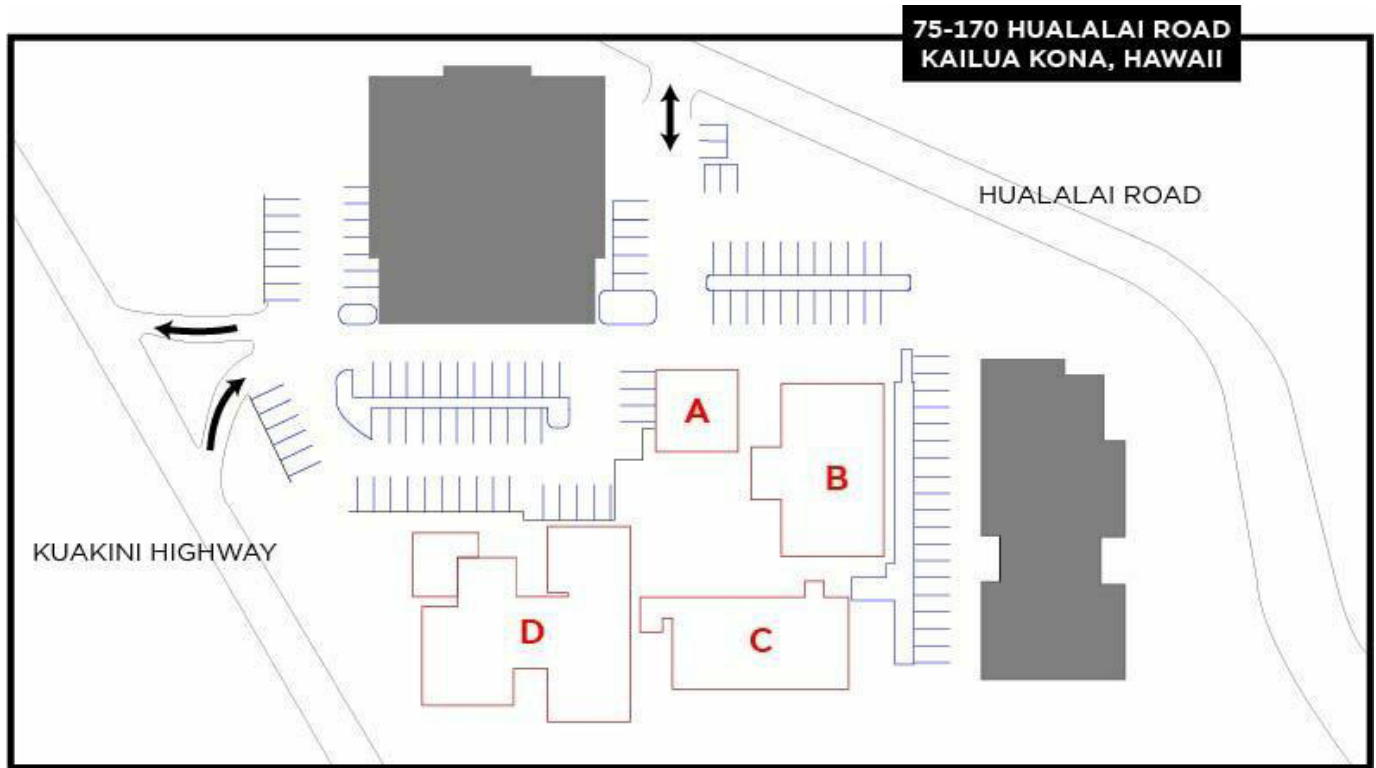
SUSIE SCRIBNER

O: 805.403.0301

susie.scribner@svn.com

Hawaii #RS-84227

LEASE SPACES



LEASE INFORMATION

LEASE TYPE:	Gross	LEASE TERM:	Negotiable
TOTAL SPACE:	638 - 1,898 SF	LEASE RATE:	\$3.25 SF/month

AVAILABLE SPACES

SUITE TENANT SIZE (SF) LEASE TYPE LEASE RATE DESCRIPTION

SUITE	TENANT	SIZE (SF)	LEASE TYPE	LEASE RATE	DESCRIPTION
B105	Available	882 SF	Gross	\$3.25 SF/month	Office/medical, water access.
B200/201	Available	1,027 SF	Gross	\$3.25 SF/month	Former Diagnostics Lab. Currently available.
B205	Available	638 SF	Gross	\$3.25 SF/month	Small office space w/3 separate offices.
C210	Available	1,898 SF	Gross	\$3.25 SF/month	Office space. Formerly occupied by title company.
D112	Available	864 SF	Gross	\$3.25 SF/month	Office space with reception and private restroom.
D114	Available	713 SF	Gross	\$3.25 SF/month	Small office space with reception and 4 separate offices.

GREGORY OGIN

O: 808.329.6446

gogin@svn.com

HI #RB-16053

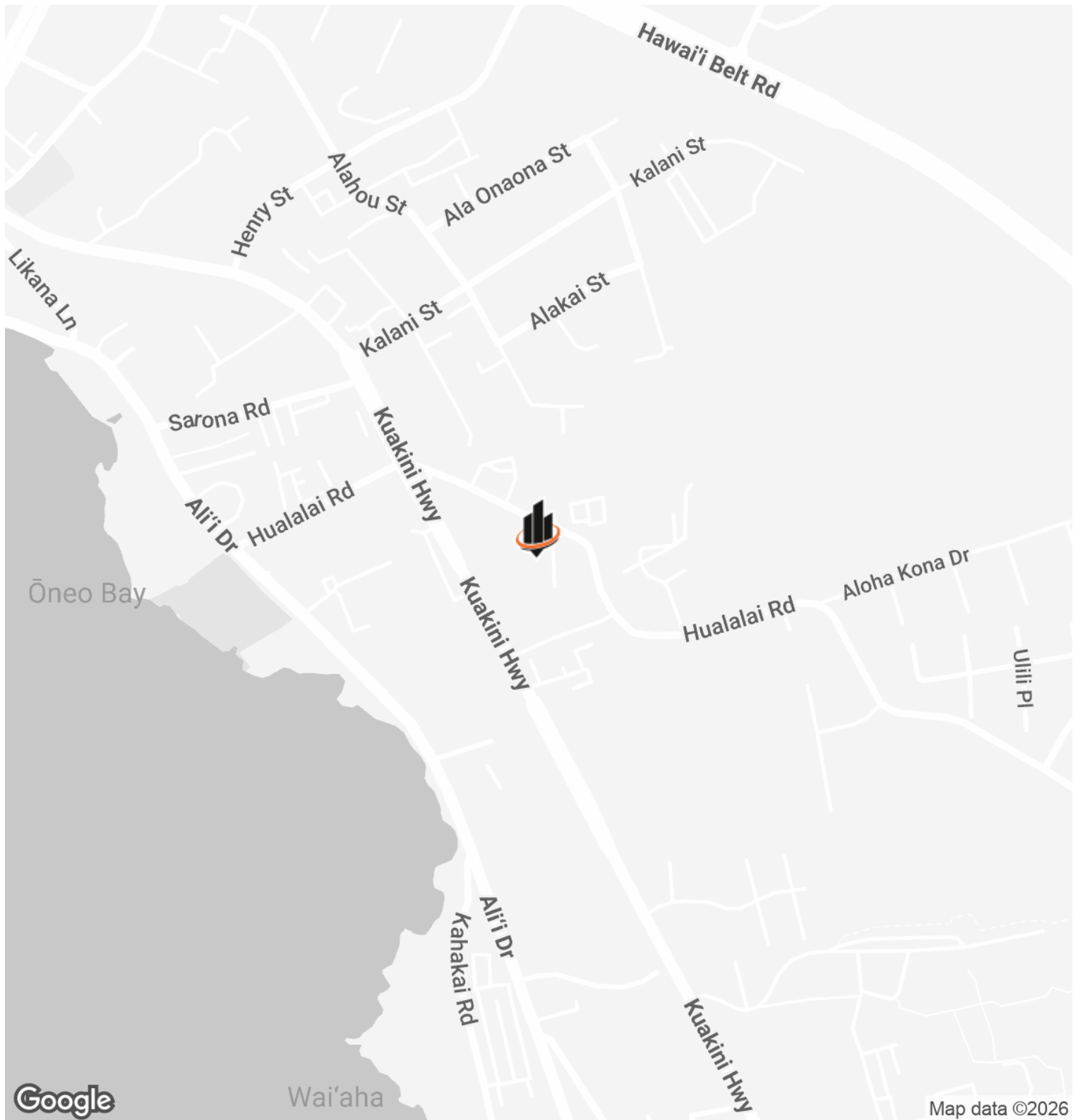
SUSIE SCRIBNER

O: 805.403.0301

susie.scribner@svn.com

Hawaii #RS-84227

LOCATION MAP



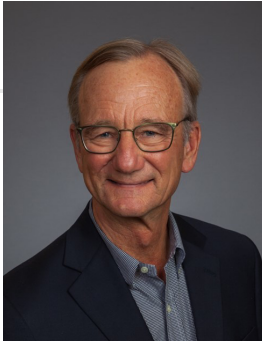
GREGORY OGIN

O: 808.329.6446
gogin@svn.com
HI #RB-16053

SUSIE SCRIBNER

O: 805.403.0301
susie.scribner@svn.com
Hawaii #RS-84227

ADVISOR BIO 1



GREGORY OGIN

Principal & Managing Director

gogin@svn.com

Direct: **808.329.6446** | Cell: **808.987.6446**

HI #RB-16053

PROFESSIONAL BACKGROUND

Gregory G. Ogin, CCIM, CPM, serves as Principal and Managing Director of SVN | GO Commercial, a division of GO Commercial, LLC. Since 1996, he has brought the commercial division of the former Clark Realty Corporation from three buildings in Kailua-Kona to over 700,000 square feet on the island of Hawaii.

Greg has managed properties since 1981, when he supervised and managed five resort stores and a 10,000 square foot resort department store for Liberty House of Hawaii Island. He was then appointed by the Mayor as Deputy Managing Director of the County of Hawaii, where he was in charge of County Operations in West Hawaii. Greg later owned a small, independent, commercial real estate firm which started as a division of Gerry Rott and Associates.

Greg's numerous activities include serving on the Board of Hawaii Island United Way, Lai Opua 2020, Kona Family YMCA and Hawaii Disciplinary Board (Hawaii BAR). He serves as President of Amfac Community Council, Rotary Club - Kailua-Kona, Kona Kohala Chamber of Commerce, past-President of Kauai Road Runners, and founding President of Children's Advocacy Center. Greg also chairs the Hokuia Parks and Cultural Services Association, Kona Community Development Plan, and Kailua Village Improvement Plan.

EDUCATION

North Hennepin State University
University of Hawaii

MEMBERSHIPS

CCIM, CPM

SVN | GO Commercial

75-5722 Kuakini Highway Suite 214
Kailua Kona, HI 96740
808.329.6446

GREGORY OGIN

O: 808.329.6446

gogin@svn.com

HI #RB-16053

SUSIE SCRIBNER

O: 805.403.0301

susie.scribner@svn.com

Hawaii #RS-84227