

EDWARDS PROFESSIONAL PARK I

10752 N 89th Place | Scottsdale, Arizona

OFFICE SUITES & MEDICAL SUITES FOR LEASE



**SPEC SUITES AVAILABLE
FOR IMMEDIATE OCCUPANCY**

 **Transwestern**

EDWARDS PROFESSIONAL PARK I

10752 N 89th Place | Scottsdale, Arizona

OFFICE SUITES & MEDICAL SUITES FOR LEASE

LEASE RATE:

\$35.00 (Full Service, Net of Janitorial)

Contiguous to
±1,544 RSF

SUITE A207: ± 736 RSF

SUITE A208: ±808 RSF

SUITE C228: ±1,027 RSF



LOCATED

Just off Loop 101,
north of Shea Blvd



TENANT MIX

Excellent mix of medical,
dental, and office tenants



1/2 MILE

From HonorHealth
Scottsdale Shea Hospital



NEARBY

Numerous restaurant and
retail amenities

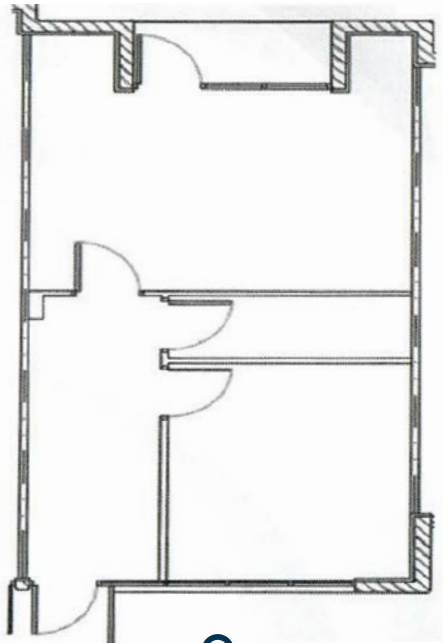


EDWARDS PROFESSIONAL PARK I

10752 N 89th Place | Scottsdale, Arizona

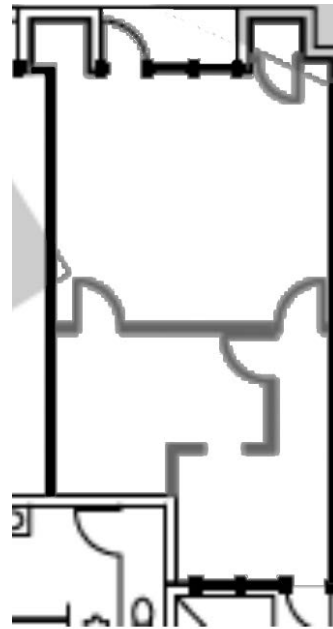
OFFICE SUITES & MEDICAL SUITES FOR LEASE

Suite A207: ±736 RSF



VIRTUAL TOUR

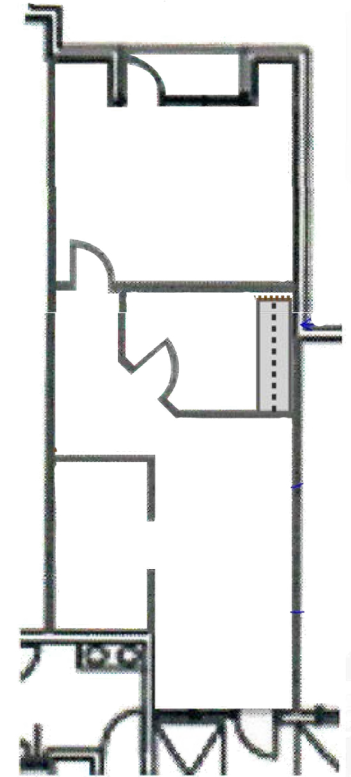
Suite A208: ±808 RSF



VIRTUAL TOUR

Contiguous to
±1,544 RSF

Suite C228: ±1,027 RSF





HONORHEALTH
Scottsdale Shea
Medical Center

SCOTTSDALE FIESTA SHOPPING CENTER

**EDWARDS
PROFESSIONAL
PARK I**

E SHEA BLVD - 61,400 VPD

N 89TH PL

E DESERT COVE AVE

17,878 VPD



- » 51,509 SF Total
- » 2 Stories
- » Class B Office Building
- » New Ownership
- » Strong traffic counts along Shea Blvd & Loop 101 Freeway



EDWARDS PROFESSIONAL PARK I

10752 N 89th Place | Scottsdale, Arizona

OFFICE SUITES & MEDICAL SUITES FOR LEASE



KATHLEEN MORGAN

Managing Director
602.809.1048

kathleen.morgan@transwestern.com

KEVIN SMIGIEL

Vice President
602.550.9295

kevin.smigiel@transwestern.com

VINCE FEMIANO

Managing Director
602.791.3310

vince.femiano@transwestern.com

ANDREW OLIVET

Associate
602.370.2685

andrew.olivet@transwestern.com

