

AVAILABLE

**The
TEMPLES
Company**

(912) 538-7000

Baxley, GA-Parker Street Bldg

343 W. Parker Street

Baxley, GA 31515

(Latitude, Longitude)

(31.779134 , -82.35141)



AVAILABLE SPACES:

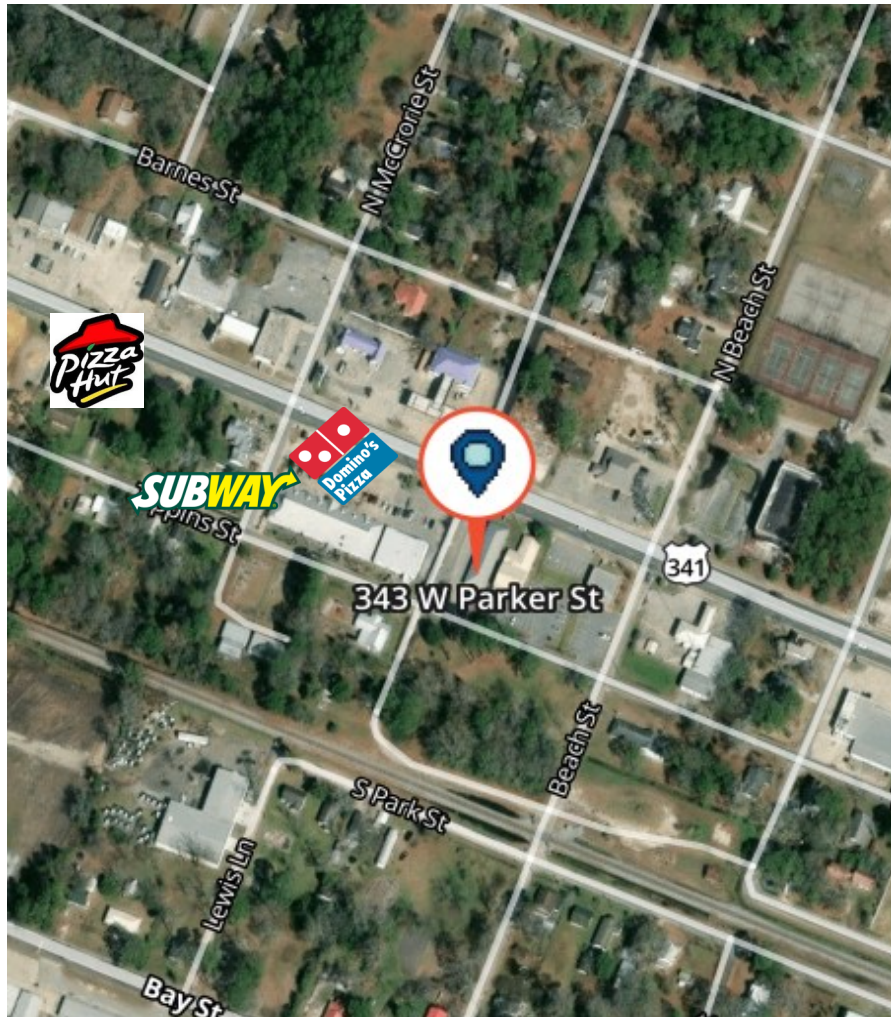
1,400 square feet @ \$12.00sf (\$1,400.00/mo)

2,160 square feet @ \$11.00sf (\$1,980.00/mo)

- Frontage on U.S. 341
- 1,440 s.f. Office
- 2,160 s.f. Office and/or Retail
- Between Center of Town and Walmart

DEMOGRAPHICS:

	5 miles	15 miles	20 miles
2025 Population:	9,714	16,182	48,776
2025 Households:	3,690	6,250	17,721
2025 Median HH Inc:	\$41,605	\$44,454	\$46,991



***Please contact our office for
additional information.***

The Temples Company

PO Box 405

301 Mosley Street (30474)

Vidalia, GA 30475

(912) 538-7000

www.thetemplescompany.com

* This information has been obtained from sources believed reliable. While we do not doubt its accuracy, we have not verified it and make no guarantee or representation about the information. It is your responsibility to independently confirm its accuracy and completeness. `2502DEC