



HACIENDA MEDICAL CENTER

±1,133 SF - ±1,285 SF MEDICAL SPACES FOR LEASE

5924 STONERIDGE DRIVE, PLEASANTON, CA 94588

LOCAL EXPERTISE. INTERNATIONAL REACH. WORLD CLASS.

Mark Rinkle

Principal

mrinkle@lee-associates.com

925-737-4145

LIC NO 01512632



HACIENDA MEDICAL BUILDING VIRTUAL TOUR

PROPERTY HIGHLIGHTS



Property type: Medical Office Space



Available
Suite 110: ±1,285 SF
Suite 204B: ±1,133 SF



One half mile from Valley Care Hospital



Excellent freeway/BART access



Ample on site parking

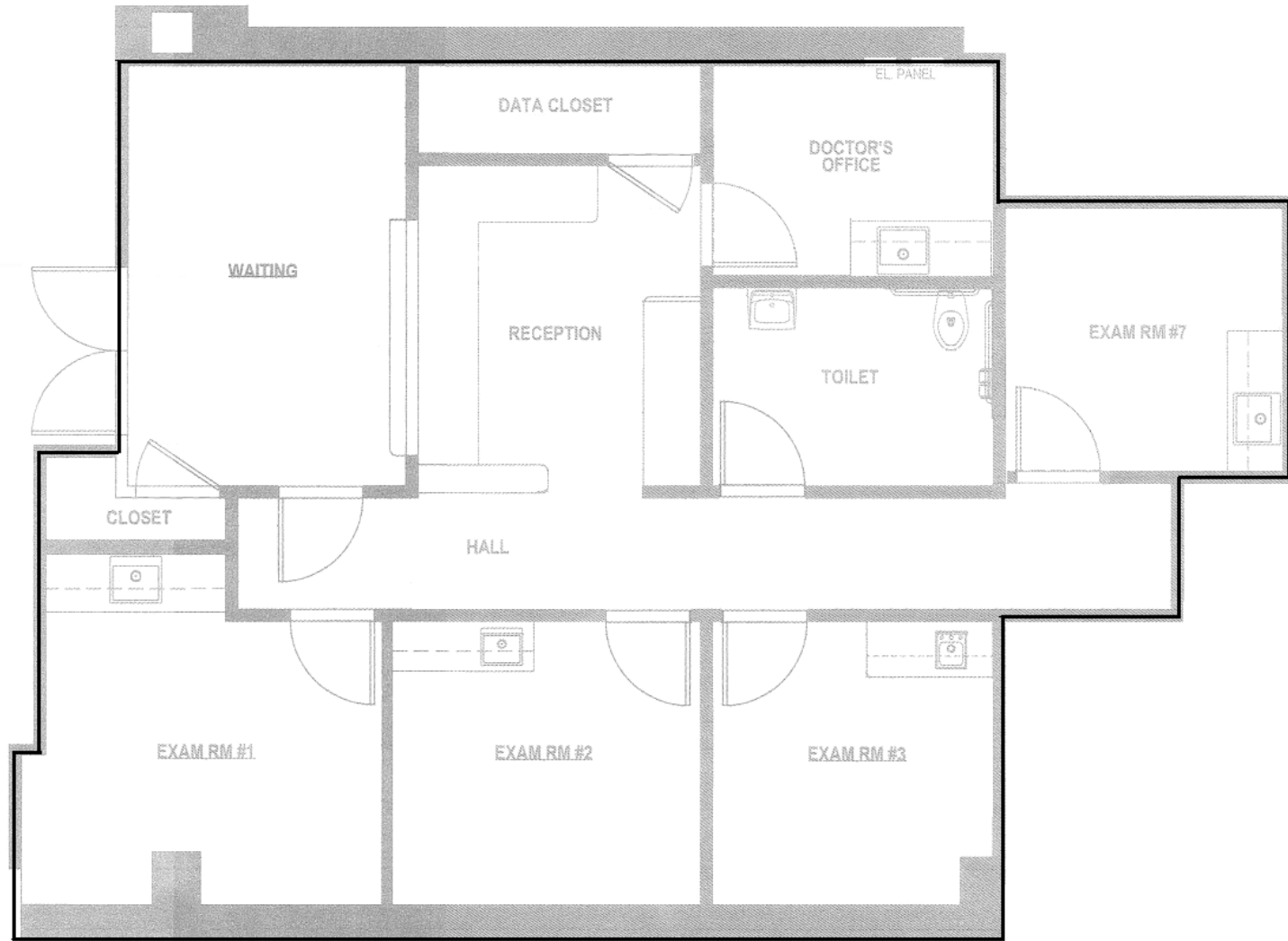


Lease rate: \$3.35/sf/month NNN
plus \$0.70/sf/month NNN's

5924
STONERIDGE DRIVE

Suite 110: ±1,285 SF

- Available Immediately



FLOOR PLAN

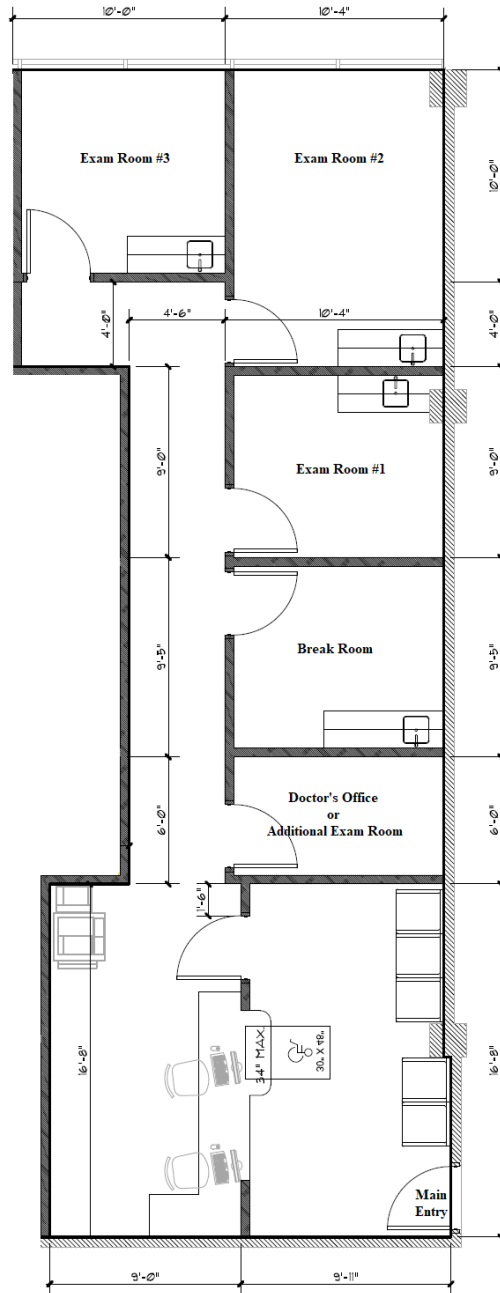
*Floorplan not to scale

5924
STONERIDGE DRIVE

FLOOR PLAN

Suite 204B: ±1,133 SF

- Available Immediately



*Floorplan not to scale

5924
STONERIDGE DRIVE

PHOTO GALLERY



5924
STONERIDGE DRIVE

FOR LEASE

±1,133 SF - ±1,285 SF MEDICAL OFFICE SPACES AVAILABLE
AT HACIENDA MEDICAL CENTER

5924 STONERIDGE DRIVE | PLEASANTON CA 94588



Mark Rinkle

Principal

mrinkle@lee-associates.com

925-737-4145

LIC NO 01512632

All information furnished regarding property for sale, rental or financing is from sources deemed reliable, but no warranty or representation is made to the accuracy thereof and same is submitted to errors, omissions, change of price, rental or other conditions prior to sale, lease or financing or withdrawal without notice. No liability of any kind is to be imposed on the broker herein.

Lee & Associates® East Bay, Inc. Corp. ID 01194869 5000 Pleasanton Ave, Suite 220, Pleasanton, CA 94566

LEE-ASSOCIATES.COM/PLEASANTON/

5924
STONERIDGE DRIVE