



For Lease

colliers.com/Reno



639 Isbell Road
Reno, NV 89509

Lease Rate:

\$1.65/SF Full Service

Available Space:

1,225 SF – 3,773 SF

Three-Story, Class A, Office Building in the Central Submarket



Multiple Suite
Configurations
Available



Well Maintained
Property and
Landscape



Well Located in
Central Reno

For Lease

Property Description

Isbell Office Suites offers an outdoor eating area with no traffic noise. The building is conveniently located in close proximity to the many amenities including restaurants, daycare centers, hotels and casinos and many other businesses.

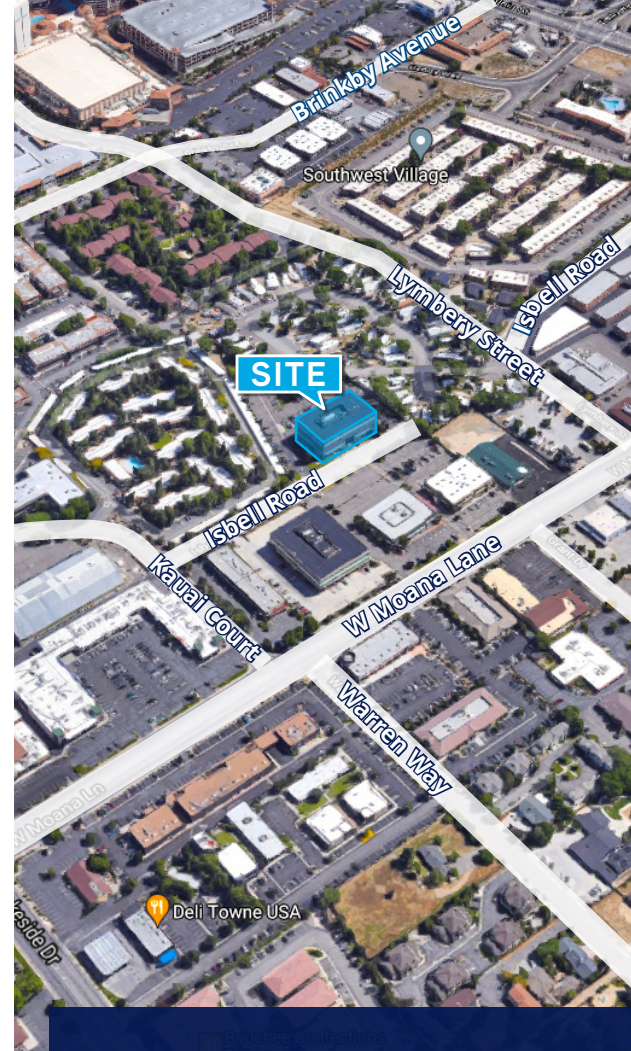
Building Features

- 40,971 SF Office building - Built in 1996 and remodeled 2007
- Four parking spaces per 1,000 SF, ample street parking and covered parking also available
- Well maintained property with a fresh contemporary look
- Ideal for professional service firms and back office users
- 5 minutes from Downtown Reno and The Reno/Tahoe Airport
- Walking distance from over 10 restaurants
- Well located in central Reno with easy access to all areas of town and close to many amenities
- Beautiful landscaping in front and back
- Suites offer outstanding views
- Building is professionally managed

Available Space

Suite	SF	Notes
Suite 250	±2,250	Available immediately. Can be combined with suite 280 for a total of 3,475 SF. View Virtual Tour
Suite 280	±1,225	Available immediately. Can be combined with suite 250 for a total of 3,475 SF. View Virtual Tour
Suite 420	±2,555	Available with 30 days notice. Sublease Term ends 1/31/28.
Suite 460	±3,773	Available August 1, 2026. Sublease Term ends 1/31/28.

Lease Rate: \$1.65/SF/MO Full Service



Contact:

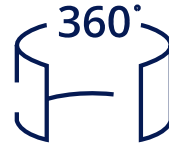
Melissa Molyneux SIOR, CCIM
Executive Vice President
+1 775 823 4674 Direct
+1 775 762 7990 Cell
Melissa.Molyneux@colliers.com
NV Lic BS.0144599.LLC

Jason Hallahan
Associate
+1 775 333 6969 Direct
+1 775 287 5610 Cell
Jason.Hallahan@colliers.com
NV Lic S.0200644

Colliers

5520 Kietzke Lane, Suite 300
Reno, Nevada 89511
+1 775 823 9666
colliers.com/reno

Second Floor



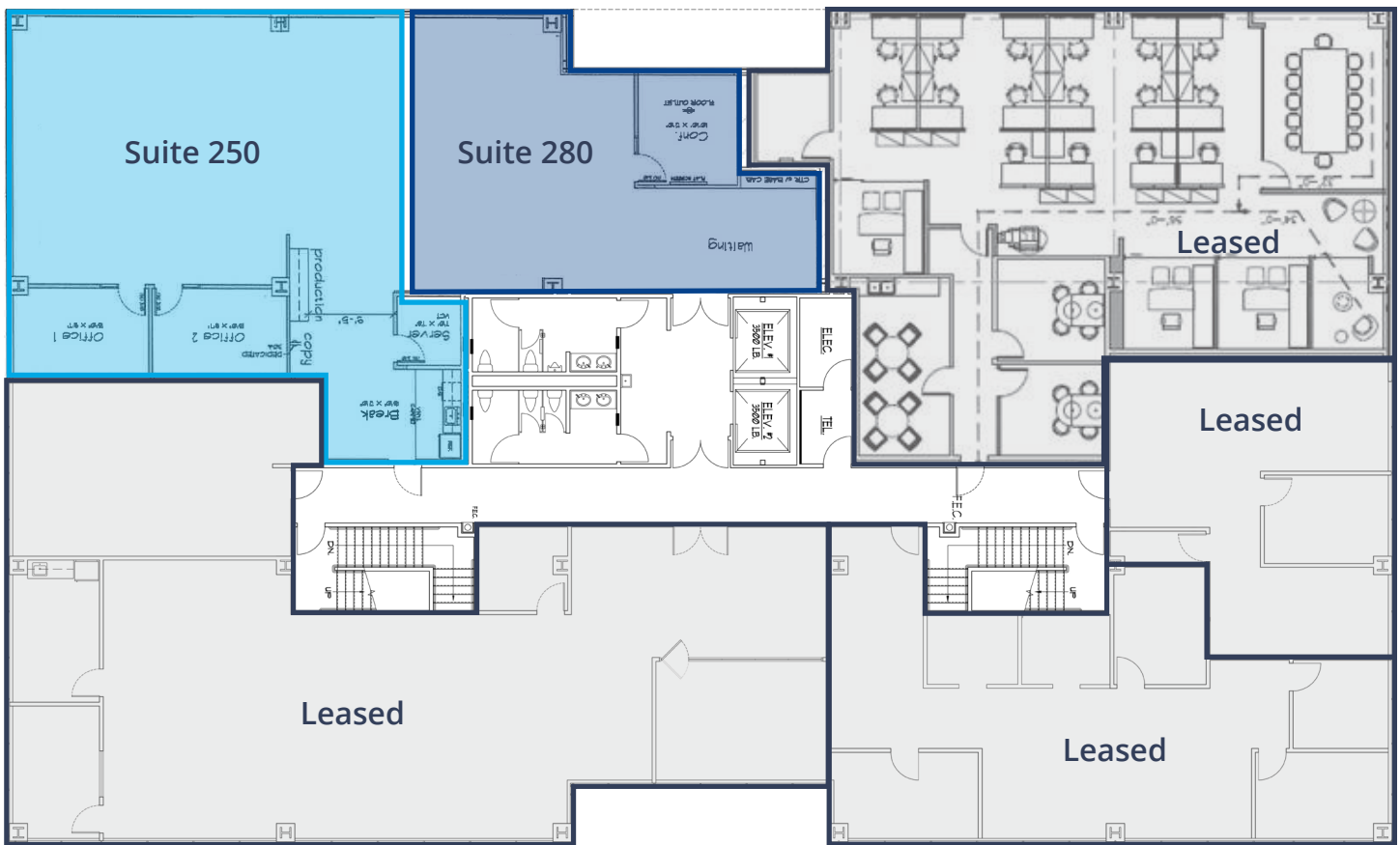
Click on a suite below to view virtual tour

Suite 250: ±2,250 SF

Space features one private office and open bull pen. The suite can be combined with suite 280 for a total of 3,475 SF. The space is available immediately and furniture may be available. [View Virtual Tour](#)

Suite 280: ±1,225 SF

Space features two private offices, IT/storage, bull pen, reception/waiting area and conference room. The suite can be combined with suite 250 for a total of 3,475 SF. The space is available immediately and furniture may be available. [View Virtual Tour](#)



Fourth Floor

Suite 420: ±2,555 SF

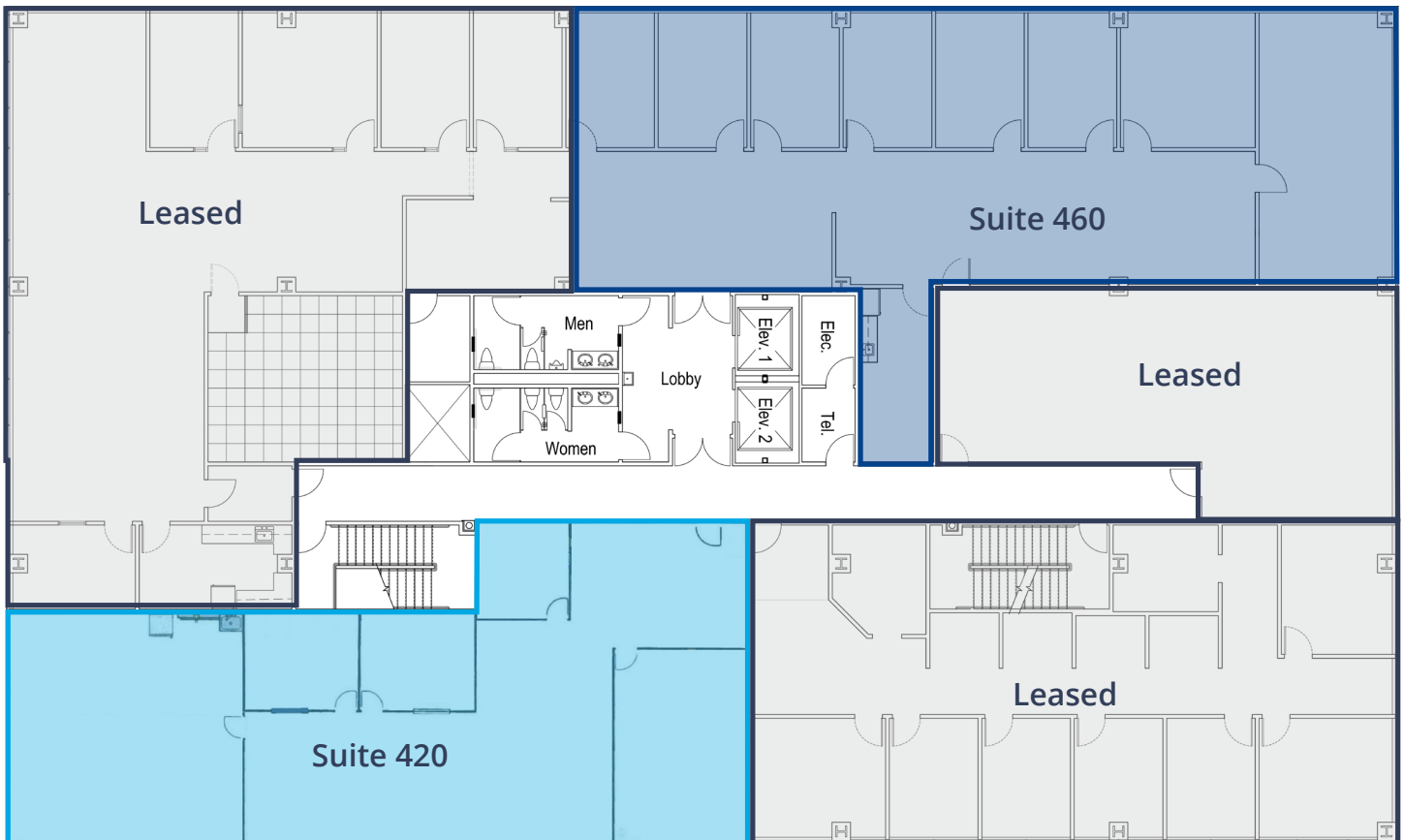
The space was recently updated with new carpet and paint. The layout includes a reception area, large conference room, two private offices, a kitchen, a large training room or area for cubicles as well as room for workstations and storage.

Available with 30 days notice. Sublease Term ends 1/31/28.

Suite 460: ±3,773 SF

The layout includes a reception area, conference room, nine private offices, a kitchen, a large training room or area for cubicles as well as room for workstations and storage.

Available August 1, 2026. Sublease Term ends 1/31/28.



Regional Location



This document/email has been prepared by Colliers for advertising and general information only. Colliers makes no guarantees, representations or warranties of any kind, expressed or implied, regarding the information including, but not limited to, warranties of content, accuracy and reliability. Any interested party should undertake their own inquiries as to the accuracy of the information. Colliers excludes unequivocally all inferred or implied terms, conditions and warranties arising out of this document and excludes all liability for loss and damages arising there from. This publication is the copyrighted property of Colliers and /or its licensor(s). © 2026. All rights reserved. This communication is not intended to cause or induce breach of an existing listing agreement.

Contact



Melissa Molyneux, SIOR, CCIM
Executive Vice President
+1 775 823 4674
Melissa.Molyneux@colliers.com
NV Lic. BS.0144599.LLC



Jason Hallahan
Associate
+1 775 333 6969
Jason.Hallahan@colliers.com
NV Lic S.0200644