



CUSHMAN &  
WAKEFIELD

Bank of America

**FOR LEASE**

# ONE COUNTRYSIDE PLACE

12500 SAN PEDRO AVENUE  
SAN ANTONIO, TEXAS 78216

BRYAN SETHNEY  
Managing Director  
+1 210 305 4280  
[bryan.sethney@cushwake.com](mailto:bryan.sethney@cushwake.com)

MEREDITH MUECKE HOWARD  
Director  
+1 512 804 9116  
[meredith.howard@cushwake.com](mailto:meredith.howard@cushwake.com)

4040 Broadway Street  
Suite 602  
San Antonio, Texas 78209  
[cushmanwakefield.com](http://cushmanwakefield.com)



# PROPERTY DESCRIPTION

One Countryside Place is a 147,986 SF, Class A office building located less than two miles from the San Antonio International Airport. The Property is close proximity to dining, banking, hotel accommodations and health club facilities.

## PROPERTY FEATURES

- Newly renovated atrium lobby with granite walls, travertine tile flooring, and modern lobby furniture
- Abundant free covered parking at a 4.34/1000 RSF ratio
- Onsite property management, maintenance staff, and day porter
- Onsite courtesy officer
- Janitorial service 5 nights per week
- 24/7 card key access
- Grab and Go Market with lounge

## PROPERTY DETAILS

**RENTAL RATE** \$26.00 SF/YR  
(Full Service)







## SPACE AVAILABLE

SPACE	SPACE USE	LEASE RATE	LEASE TYPE	SIZE (RSF)
Suite 101	Office	\$26.00/SF/Yr	Full Service	5,056 RSF
Suite 120	Office	\$26.00/SF/Yr	Full Service	4,044 RSF
Suite 150	Office	\$26.00/SF/Yr	Full Service	4,401 RSF
Suite 250	Office	\$26.00/SF/Yr	Full Service	4,920 RSF
Suite 310	Office	\$26.00/SF/Yr	Full Service	3,058 RSF
Suite 314	Office	\$26.00/SF/Yr	Full Service	1,396 RSF
Suite 402 & 403	Office	\$26.00/SF/Yr	Full Service	2,180 RSF
Suite 530	Office	\$26.00/SF/Yr	Full Service	982 RSF
Suite 540	Office	\$26.00/SF/Yr	Full Service	1,353 RSF
Suite 575	Office	\$26.00/SF/Yr	Full Service	881 RSF
Suite 650	Office	\$26.00/SF/Yr	Full Service	3,846 RSF
Suite 670	Office	\$26.00/SF/Yr	Full Service	5,300 RSF



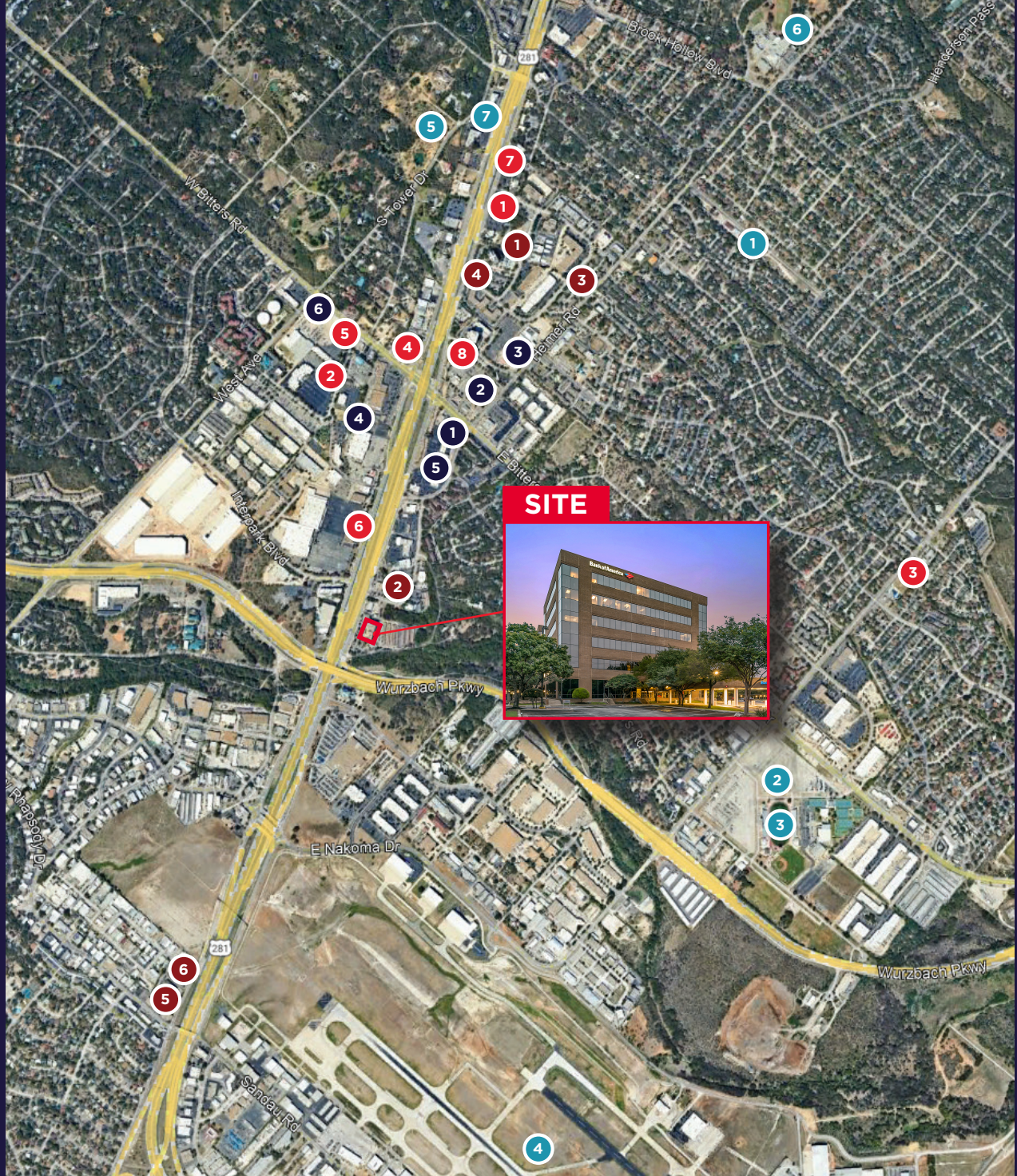


**LOBBY**

**PROPERTY**







## AMENITY MAP

### RESTAURANTS

- 1 Alamo Cafe
- 2 Max and Louie's New York Diner
- 3 Gogi Street (Korean Fusion)
- 4 Denny's
- 5 Starbucks
- 6 Panera Bread
- 7 IHOP
- 8 Olive Garden Italian Restaurant

### BUSINESSES

- 1 Office Depot
- 2 Target
- 3 The Home Depot
- 4 Goodwill Store and Donation Station
- 5 FedEx Office Print & Ship Center
- 6 7-Eleven

### POINTS OF INTEREST

- 1 Twin-Oaks Airport-T94
- 2 Blossom Athletic Center
- 3 Jerry Comalander Stadium
- 4 San Antonio International Airport
- 5 Sunset Hills Park
- 6 Blossom Park
- 7 One Medical park

### HOTELS

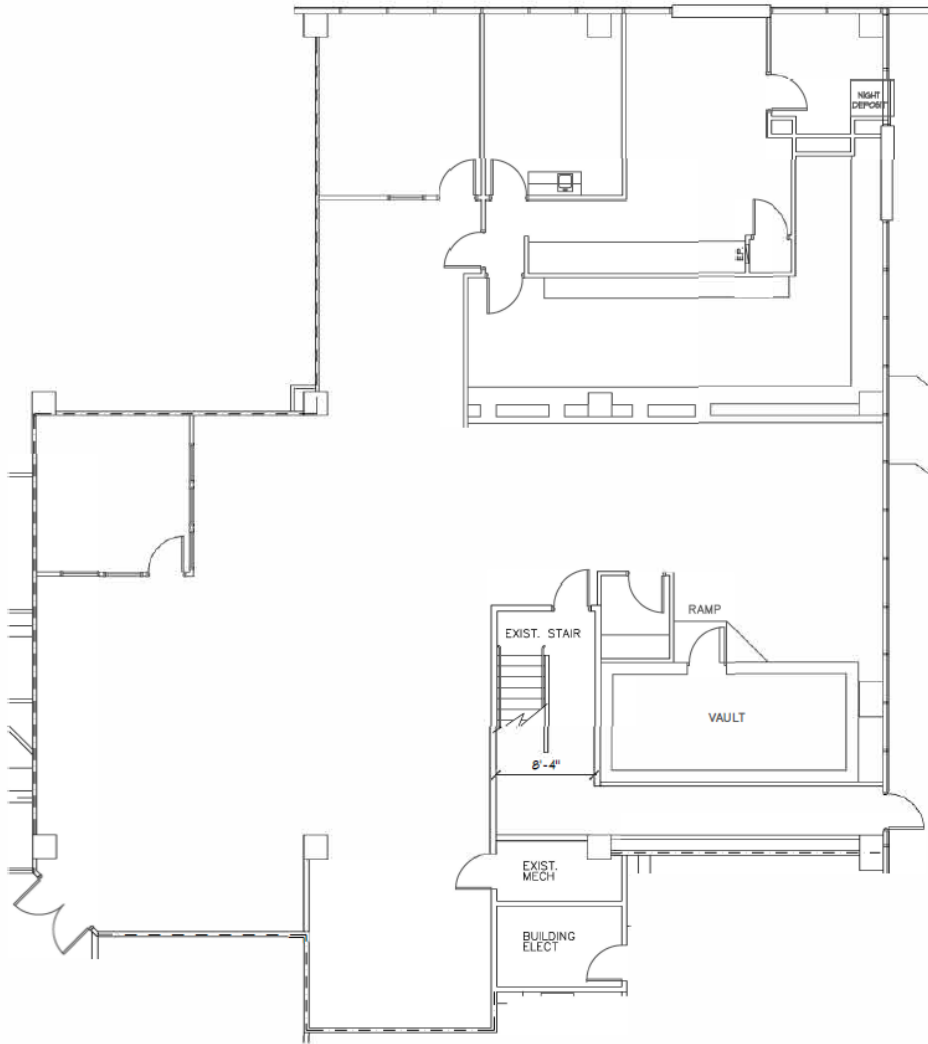
- 1 Comfort Suites San Antonio
- 2 Hilton Garden Inn
- 3 La Calera Apartments
- 4 Extended Stay America San Antonio
- 5 Studio 6 San Antonio TX Airport
- 6 SureStay Plus by Best Western San Antonio



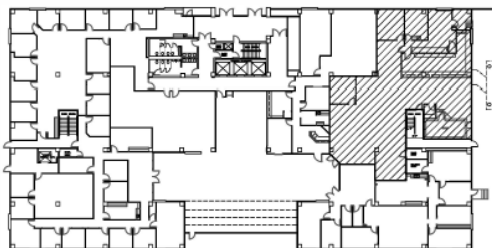
# FLOOR PLAN

AVAILABLE

SUITE 101 - 5,056 RSF



LOCATION MAP: N.T.S.

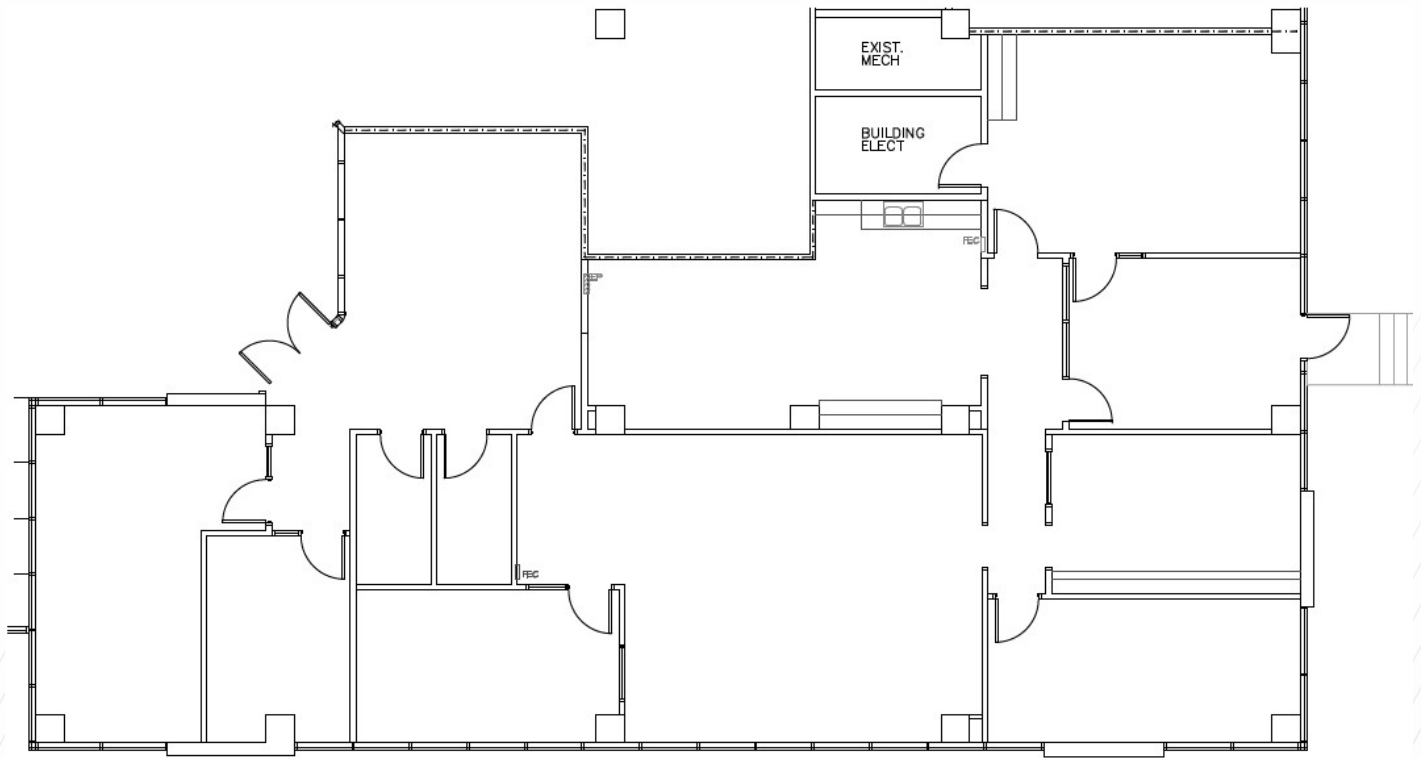




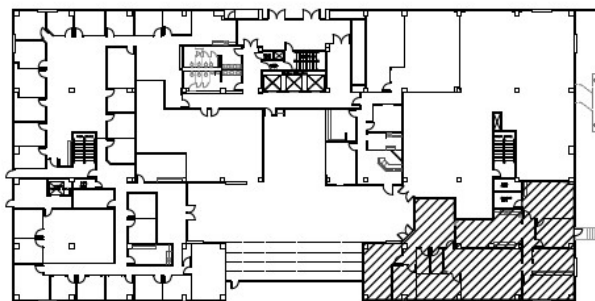
# FLOOR PLAN

AVAILABLE

**SUITE 120 - 4,044 RSF**



LOCATION MAP: N.T.S.

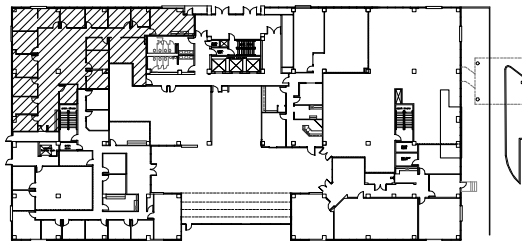
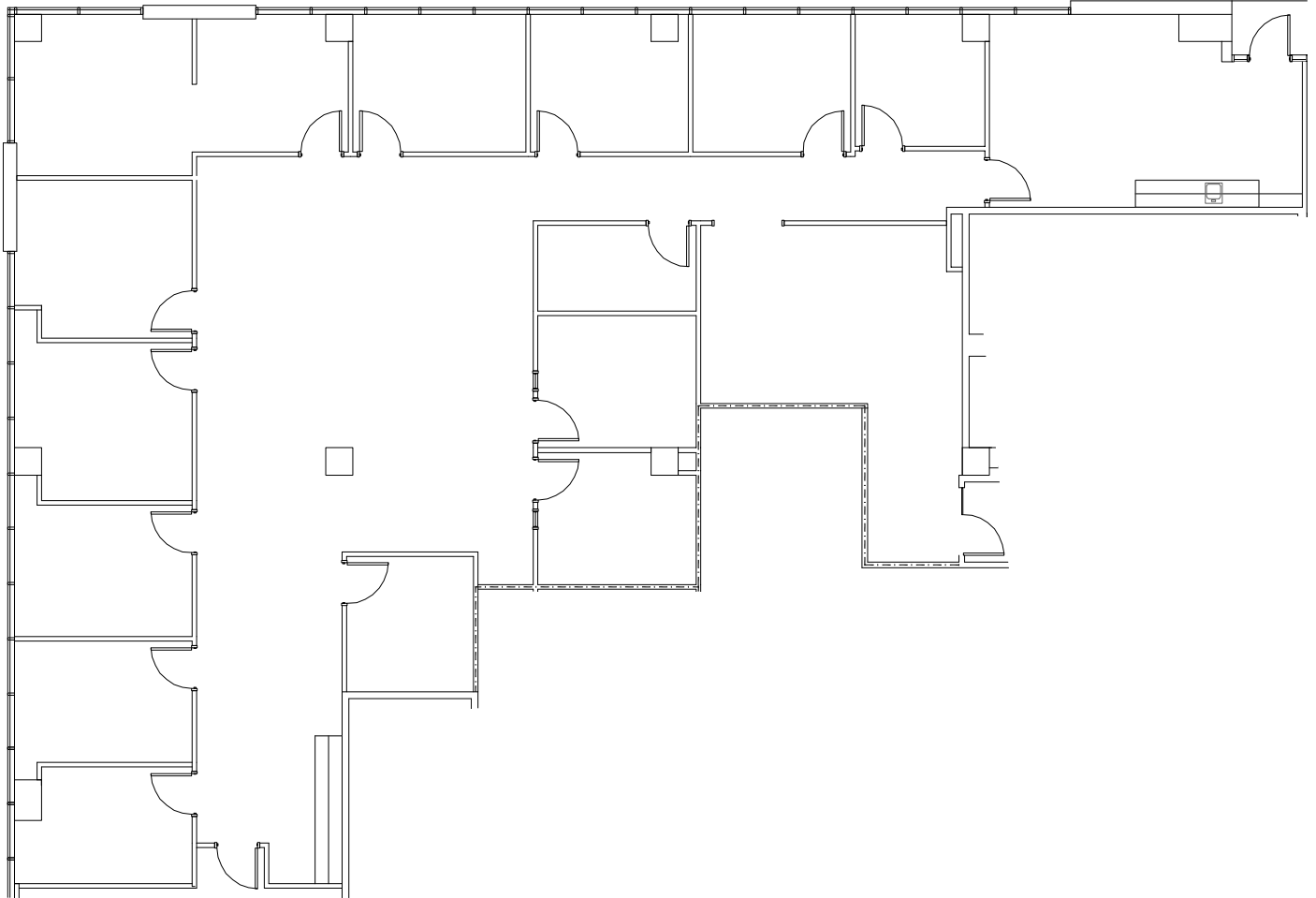




# FLOOR PLAN

## AVAILABLE

### SUITE 150 - 4,401 RSF

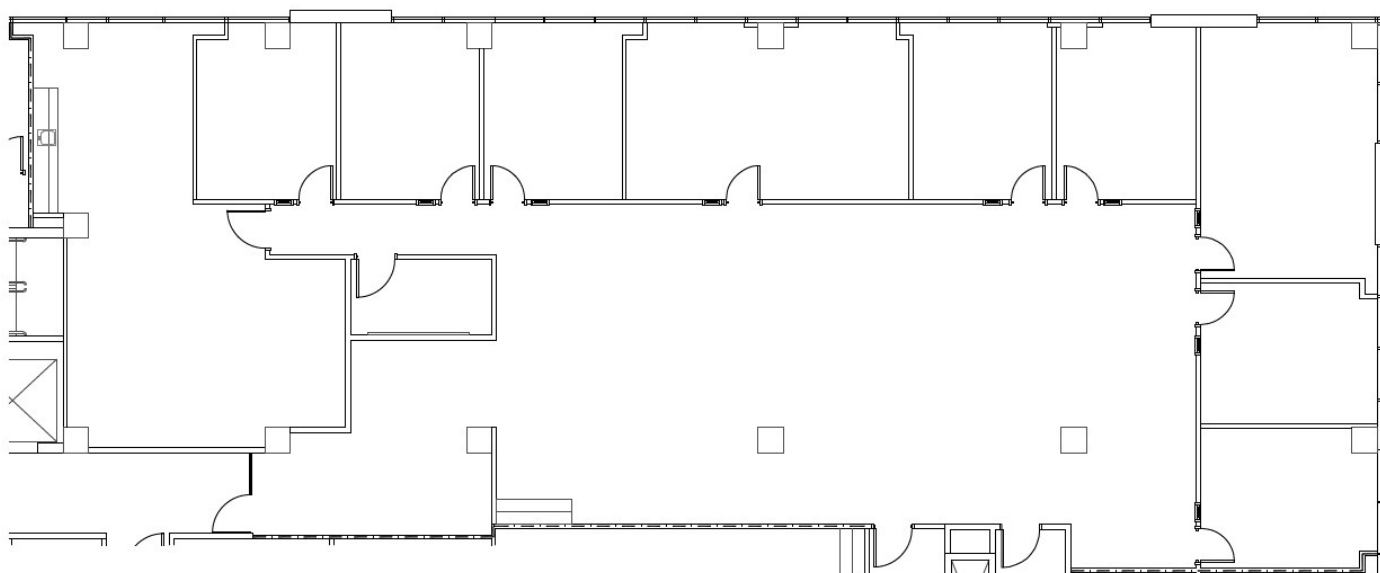




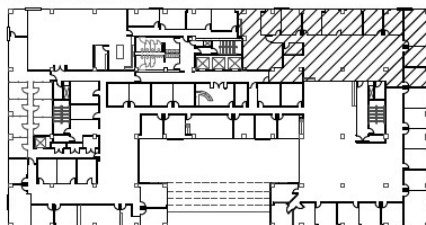
# FLOOR PLAN

AVAILABLE

**SUITE 250 - 4,920 RSF**



LOCATION MAP: N.T.S.





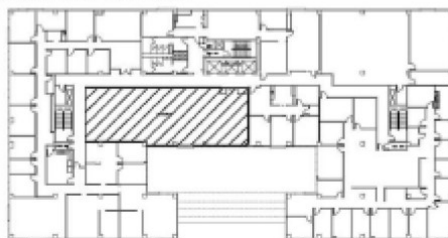
# FLOOR PLAN

AVAILABLE

**SUITE 310 - 3,058 RSF**



LOCATION MAP: N.T.S.

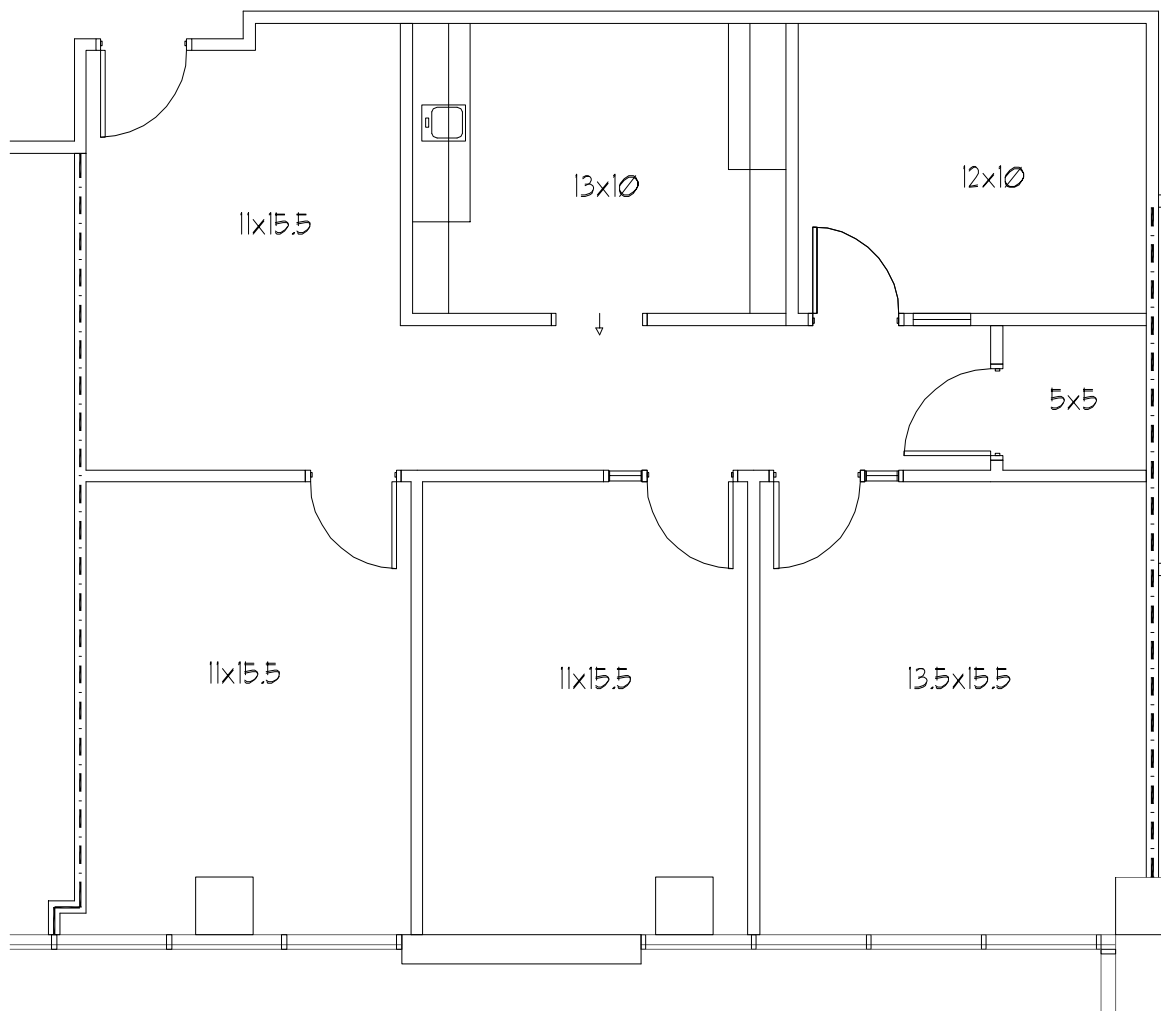




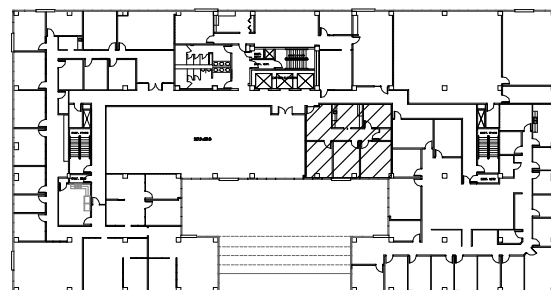
# FLOOR PLAN

AVAILABLE

SUITE 314 - 1,396 RSF



LOCATION MAP: N.T.S.

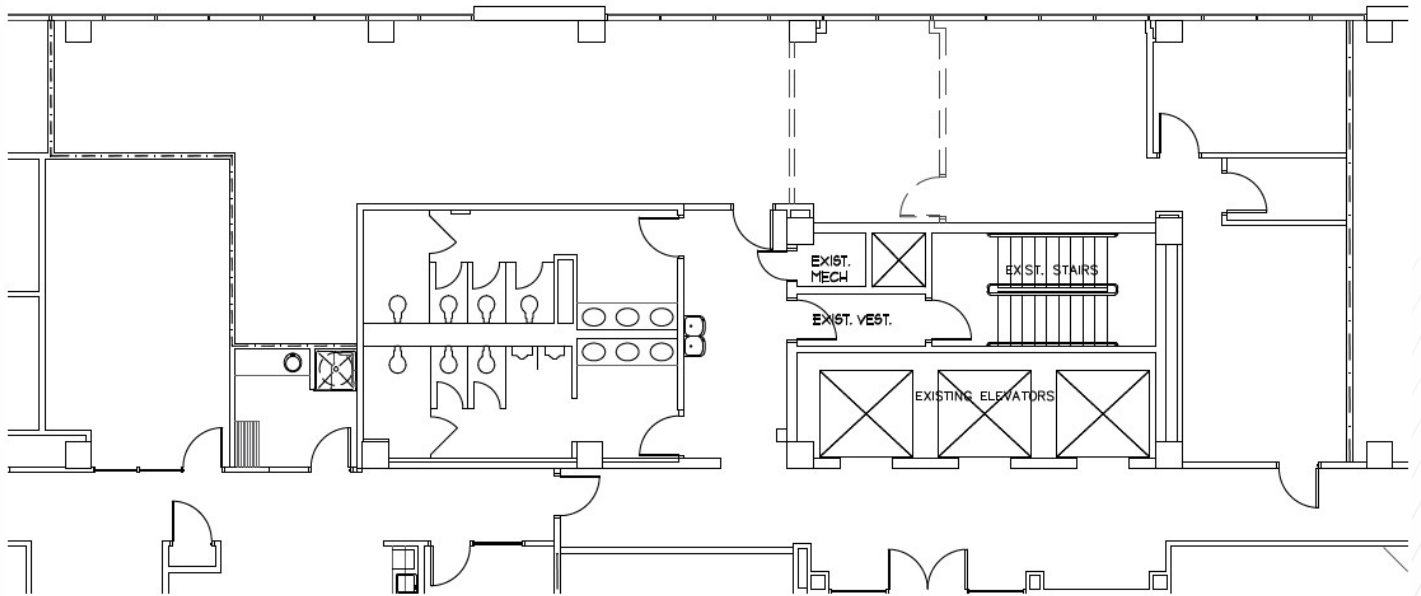




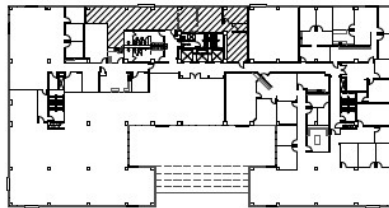
# FLOOR PLAN

AVAILABLE

**SUITE 402 & 403 - 2,180 RSF**



LOCATION MAP: N.T.S.

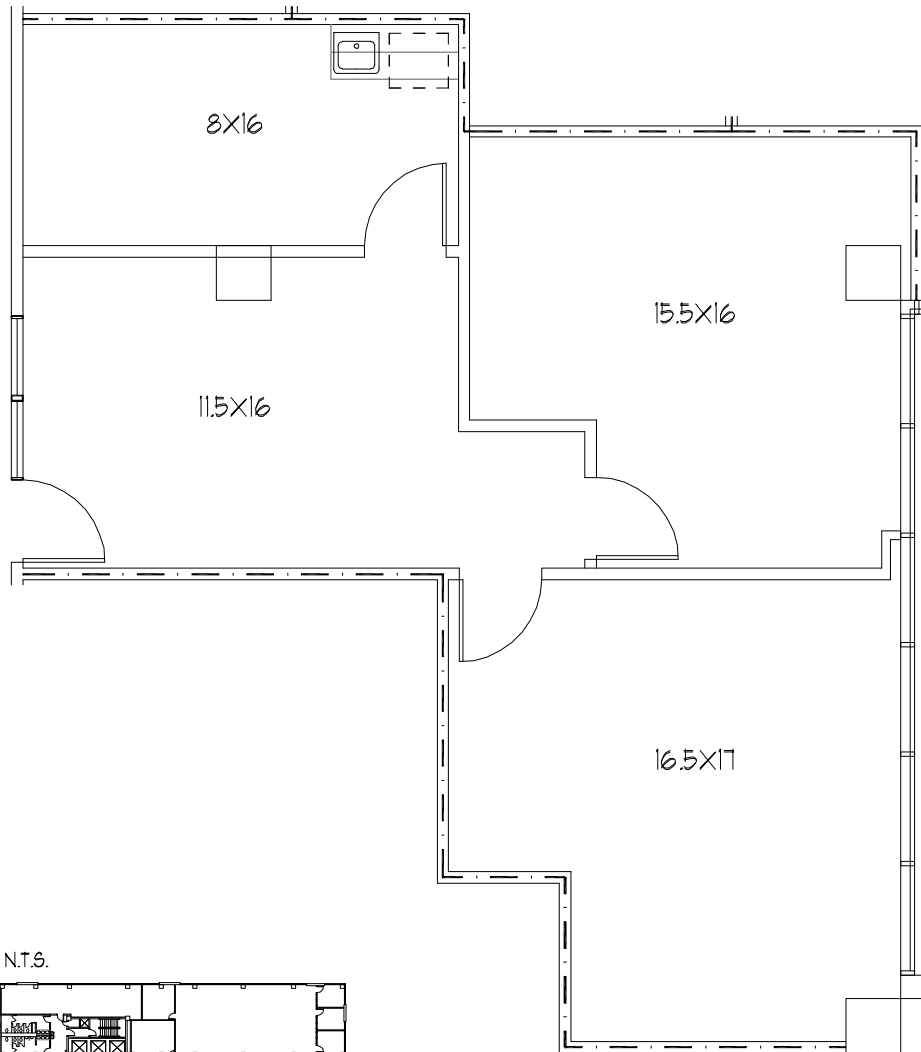




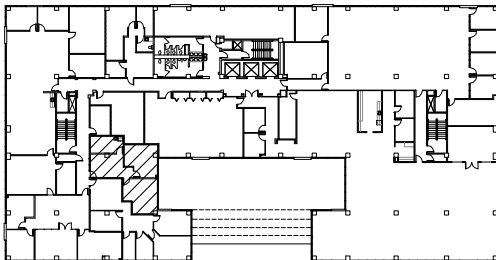
# FLOOR PLAN

AVAILABLE

SUITE 530 - 982 RSF



LOCATION MAP: N.T.S.



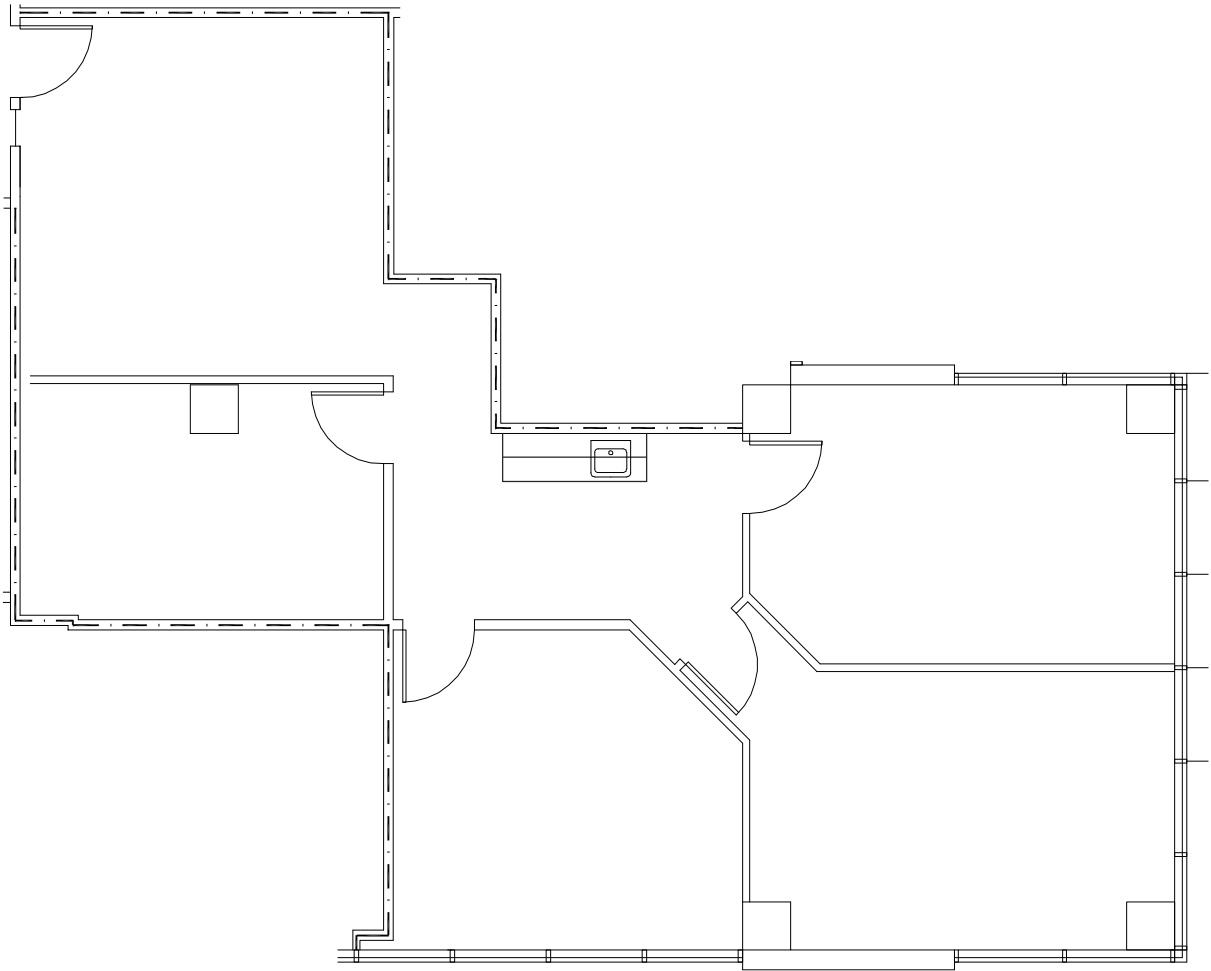
SCALE: 1/8" = 1'-0"



# FLOOR PLAN

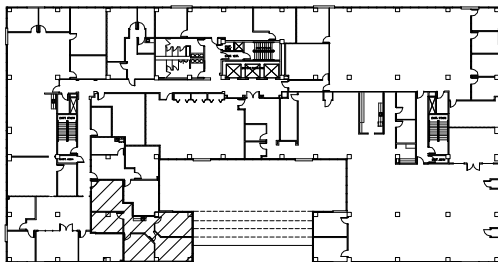
AVAILABLE

**SUITE 540 - 1,353 RSF**



SCALE: 1/8" = 1'-0"

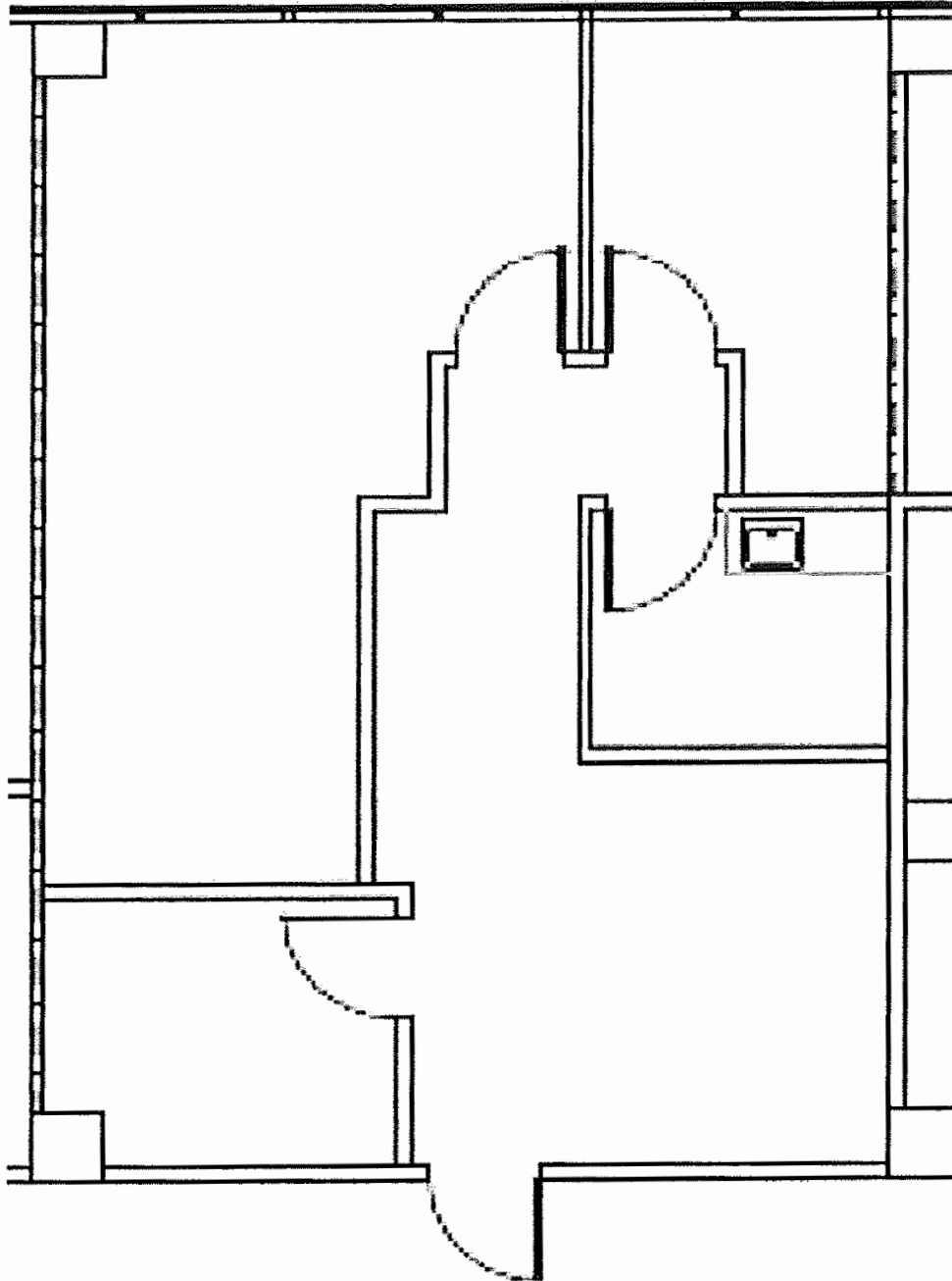
LOCATION MAP: N.T.S.



# FLOOR PLAN

AVAILABLE

SUITE 575 - 881 RSF

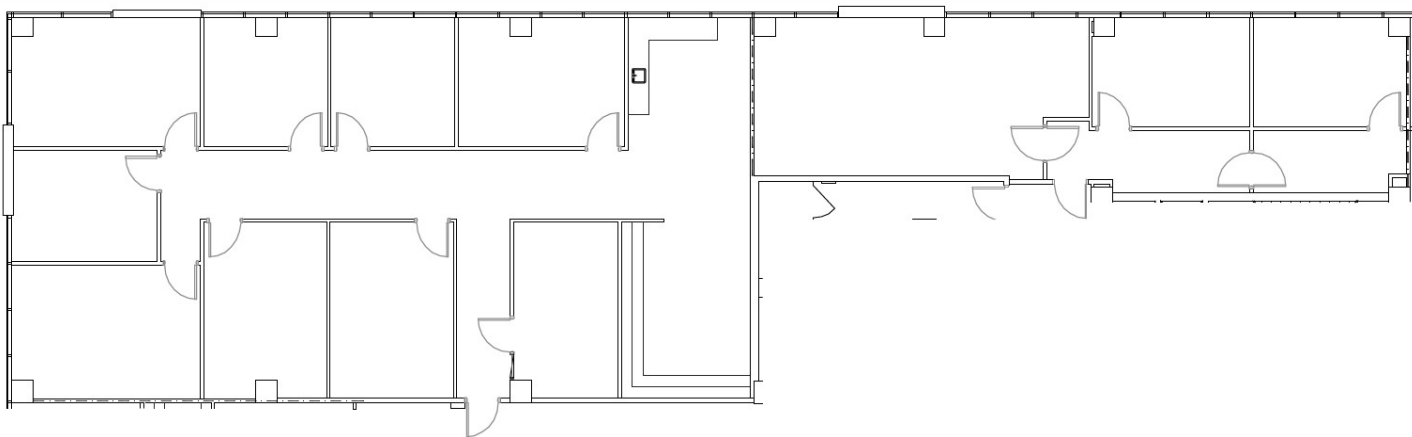




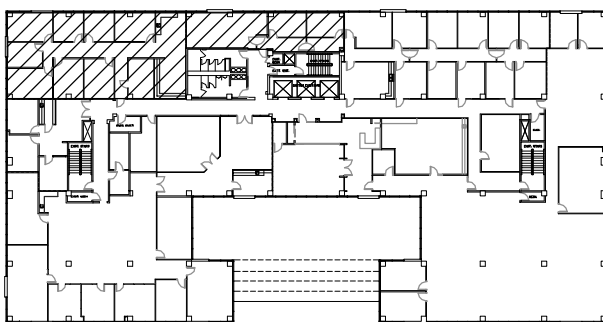
# FLOOR PLAN

AVAILABLE

**SUITE 650 - 3,846 RSF**



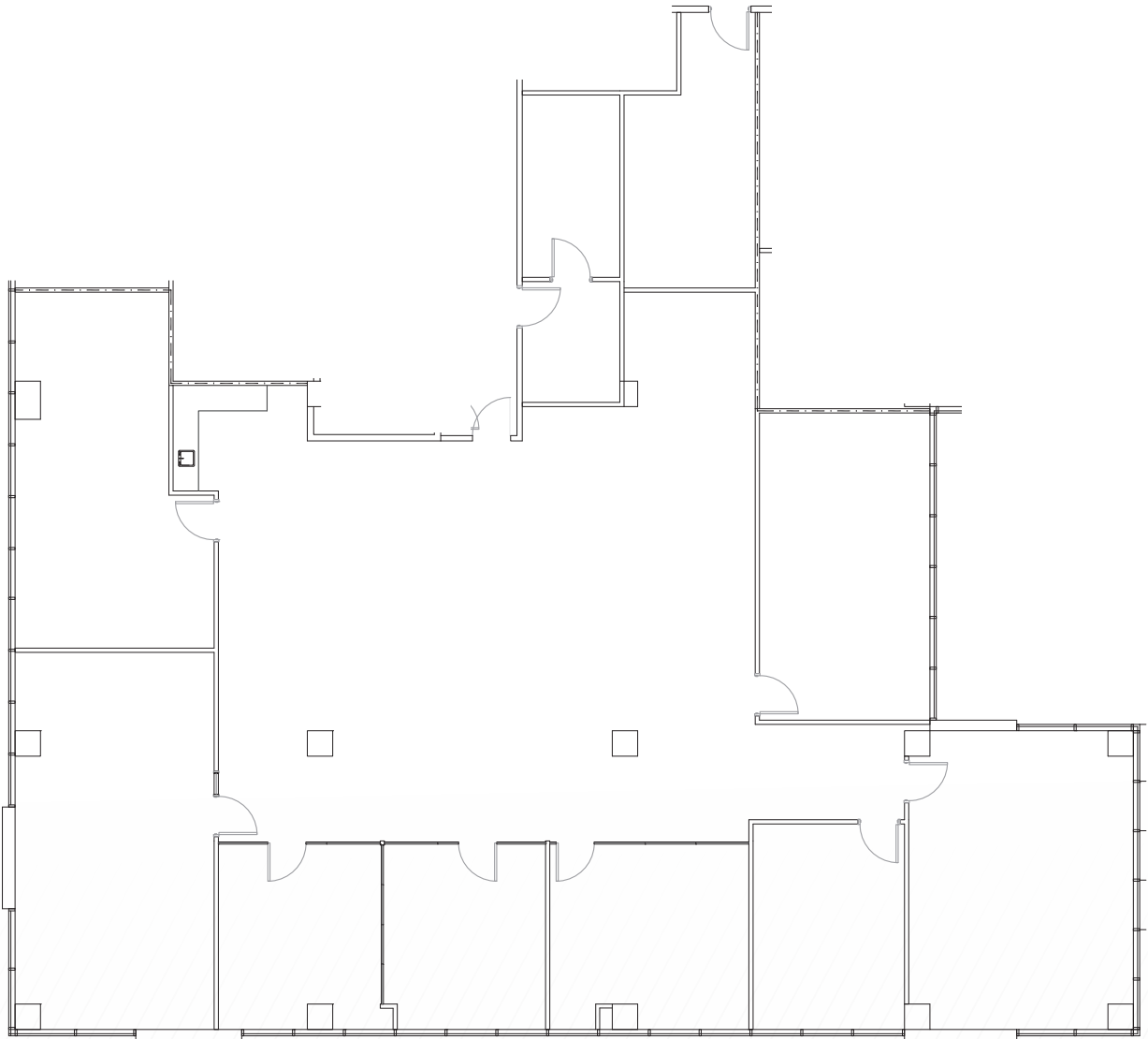
LOCATION MAP: N.T.S.



# FLOOR PLAN

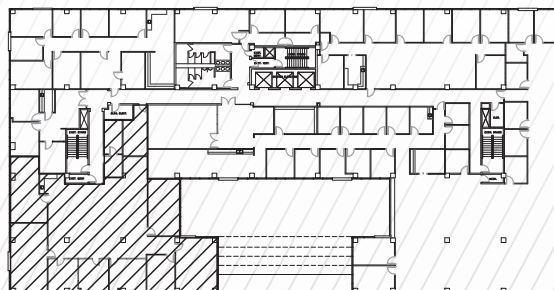
AVAILABLE

**SUITE 670 - 5,300 RSF**



SCALE: N.T.S.

LOCATION MAP: N.T.S.





A photograph of a multi-story brick office building with large glass windows. The building is illuminated from within, and the "Bank of America" logo is visible on the upper facade. The sky is a deep blue/purple, suggesting dusk or dawn. Trees are visible in the foreground and to the sides of the building.

**Bank of America**

**FOR MORE INFORMATION, PLEASE CONTACT:**

**BRYAN SETHNEY**  
Managing Director  
+1 210 305 4280  
[bryan.sethney@cushwake.com](mailto:bryan.sethney@cushwake.com)

**MEREDITH MUECKE HOWARD**  
Director  
+1 512 804 9116  
[meredith.howard@cushwake.com](mailto:meredith.howard@cushwake.com)

4040 Broadway Street  
Suite 602  
San Antonio, Texas 78209  
[cushmanwakefield.com](http://cushmanwakefield.com)

©2024 Cushman & Wakefield. All rights reserved. The information contained in this communication is strictly confidential. This information has been obtained from sources believed to be reliable but has not been verified. NO WARRANTY OR REPRESENTATION, EXPRESS OR IMPLIED, IS MADE AS TO THE CONDITION OF THE PROPERTY (OR PROPERTIES) REFERENCED HEREIN OR AS TO THE ACCURACY OR COMPLETENESS OF THE INFORMATION CONTAINED HEREIN, AND SAME IS SUBMITTED SUBJECT TO ERRORS, OMISSIONS, CHANGE OF PRICE, RENTAL OR OTHER CONDITIONS, WITHDRAWAL WITHOUT NOTICE, AND TO ANY SPECIAL LISTING CONDITIONS IMPOSED BY THE PROPERTY OWNER(S). ANY PROJECTIONS, OPINIONS OR ESTIMATES ARE SUBJECT TO UNCERTAINTY AND DO NOT SIGNIFY CURRENT OR FUTURE PROPERTY PERFORMANCE.

