

FOR SALE / LEASE

224 NW 10th Avenue
Portland, OR 97209



Apex Real Estate Partners
415 NW 11th Avenue, Portland OR 97209
p. 503.595.2840 / www.apexcre.com
Minority Business Enterprise # 10272

Max Schlesinger
Broker
971.703.4702
Max@apexcre.com

Tom Shimota
Director
503.595.2831
Tom@apexcre.com



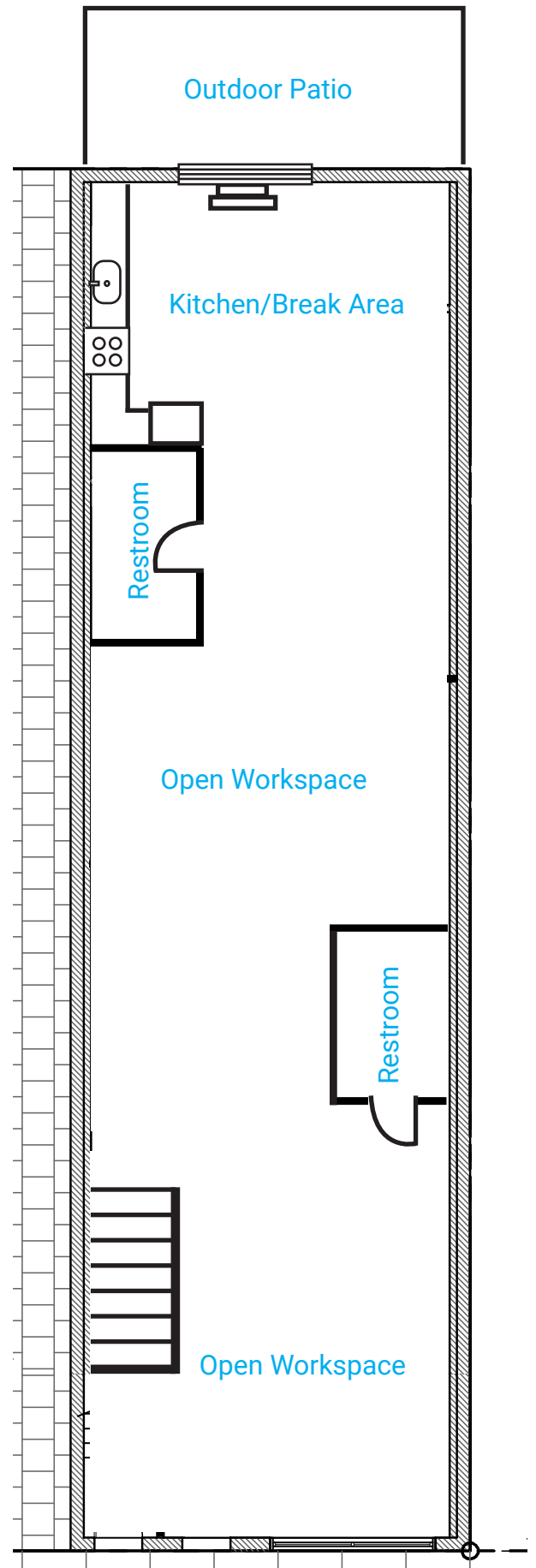


HIGHLIGHTS

Exciting chance available in Portland's sought-after Pearl District for a creative office seeker:

- » A complete second-floor space spanning \pm 2,442 SF.
- » Expansive open design showcasing exposed ceilings and hardwood floors throughout.
- » Skylight and large windows provide ample natural light.
- » Two bathrooms complete with showers.
- » Well-appointed full kitchen for convenience.
- » Exclusive outdoor deck space for private use





EXCELLENT LOCATION

- TriMet Bus Line
- Portland Streetcar
- TriMet MAX



No warranty or representation, express or implied, is made as to the accuracy of the information contained herein, and same is submitted subject to errors, omissions, change of price, rental or other conditions, withdrawal without notice, and to any special listing condition imposed by our principals.