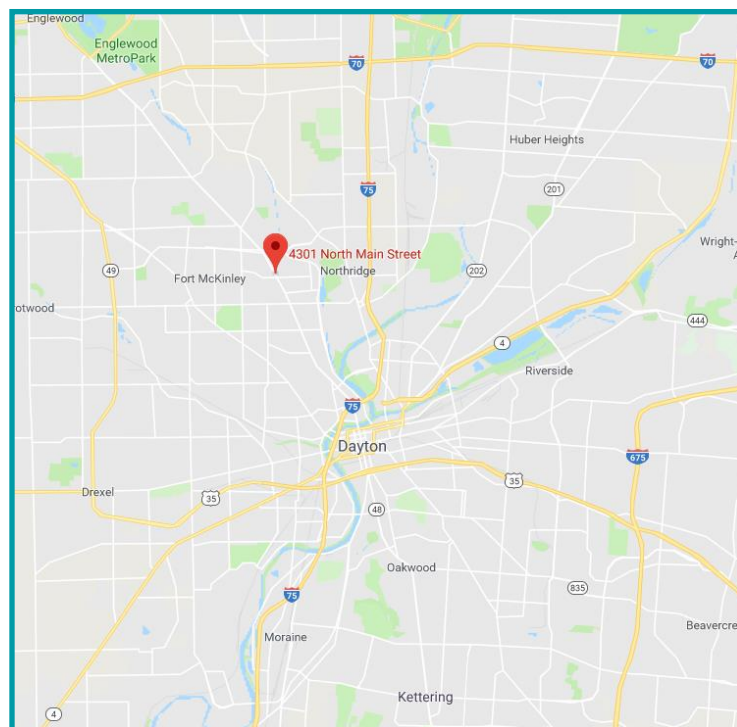




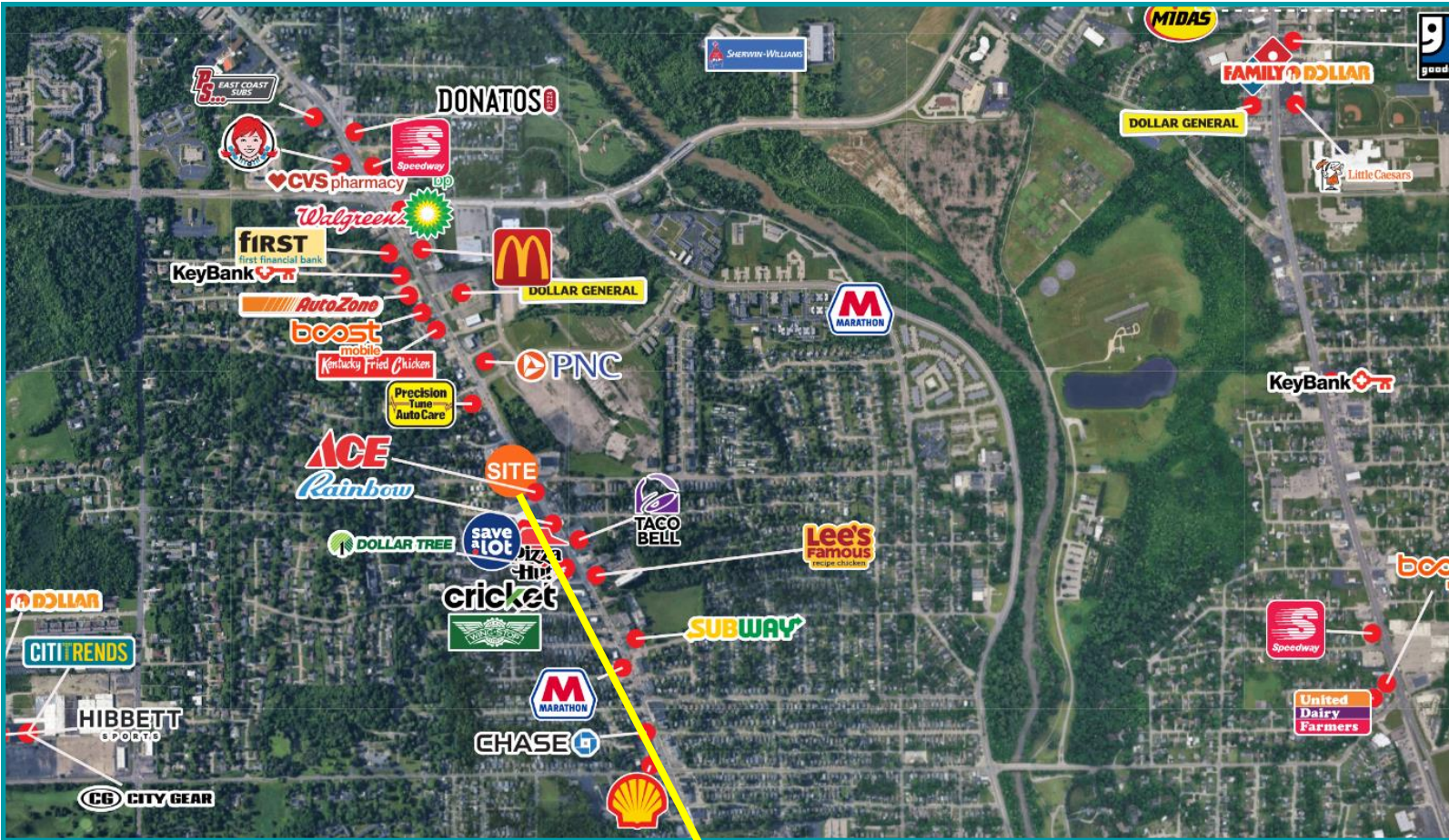
PROPERTY HIGHLIGHTS

- 3,173 sq.ft available + Basement
- .8 acres with 40 parking spaces
- Former screening business- easy plug and play; space can accommodate a variety of office/retail uses
- Excellent pylon signage
- Freestanding building located on the corner of North Main Street (SR 48) and Nottingham Road in Harrison Twp.
- Over 18,962 cars per day
- For Lease - \$10.00 PSF + \$2.87 NN

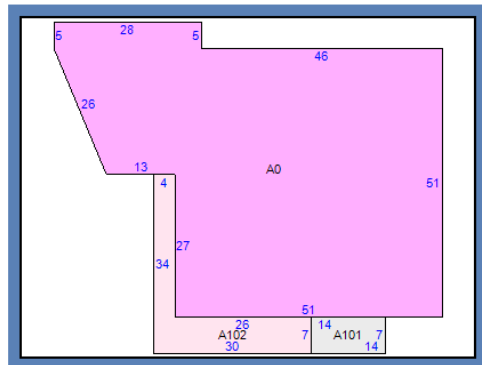


**For More Information,
Please Contact:**

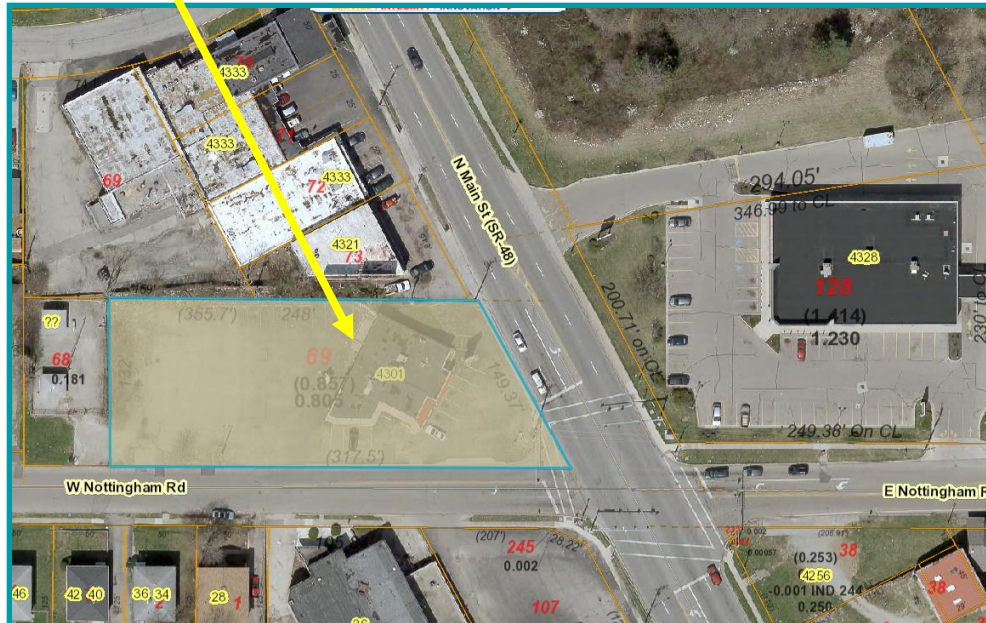
Bre Brown | Advisor
Mobile: 937.416.5553
brebrown@equity.net



PARID: E20 01008 0069
PARCEL LOCATION: 4301 MAIN ST N
NBHD CODE: C3502000



Legend		Options	
Label	Code	Description	Area
A0	034	RETAIL STORE	3173
A101	EE1	ENCLOSED ENTRY	98
A102	CP6	CANOPY ROOF/SLAB	318



DEMOGRAPHICS	1 Mile	3 Miles	5 Miles
Population	10,507	69,582	152,746
Average HH Income	\$64,504	\$69,936	\$74,161
Daytime Employee Population	2,796	29,056	98,745

