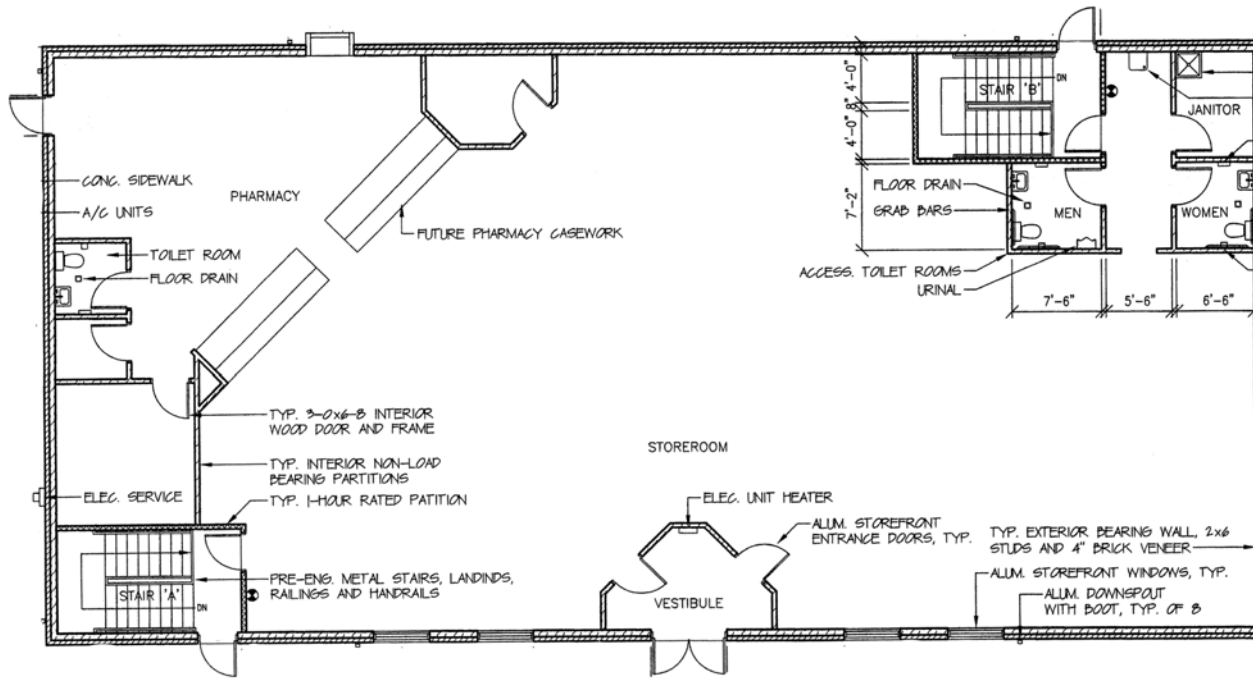




For Sale

2850 Brownsville Road | South Park, PA 15129

Floor plan



Property Summary

Sale Price: \$995,000

Building Size: 10,000 SF

Acres: 2.04

Zoning: C1

Parcel #: 885-N-350

Market/

Submarket: South Pittsburgh

Highlights

- Existing drive thru
- Retail / Office / Flex use
- Power: 3 phase 240v / 900 amps
- Parking Type: Surface – 23 spaces
- Conveniently located in the heart of South Park
- Perfect for owner occupant or investment opportunity
- Street Level: 5,000 SF - Retail/Office
- Lower Level: 5,000 SF - Storage/Office

POPULATION

2-Miles	5-Miles	10-Miles
18,768	113,330	492,368

HOUSEHOLDS

2-Miles	5-Miles	10-Miles
8,016	45,794	215,337

AV HH INCOME

2-Miles	5-Miles	10-Miles
\$128,849	\$135,220	\$111,451

Photos



Photos



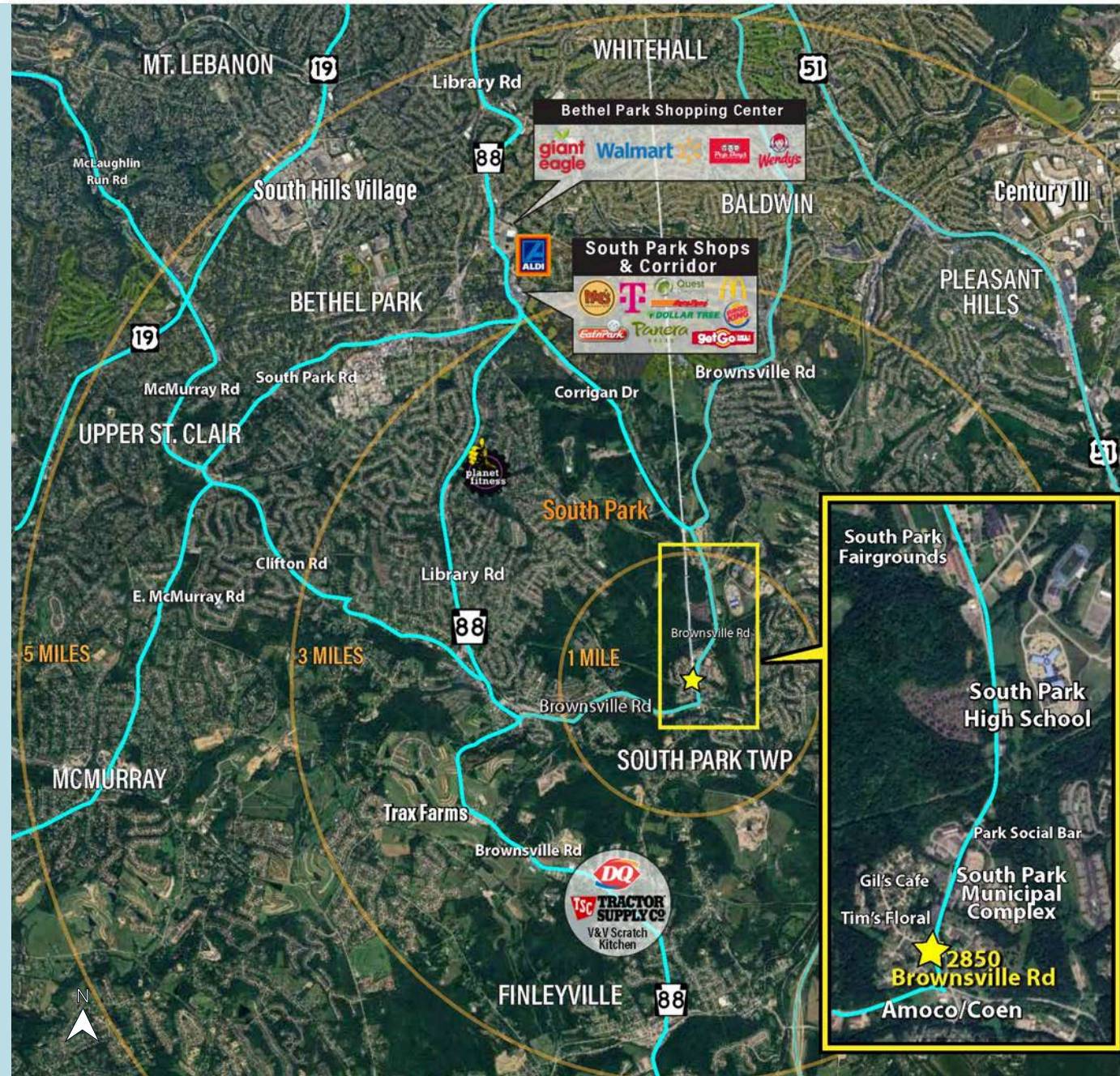
Trade area

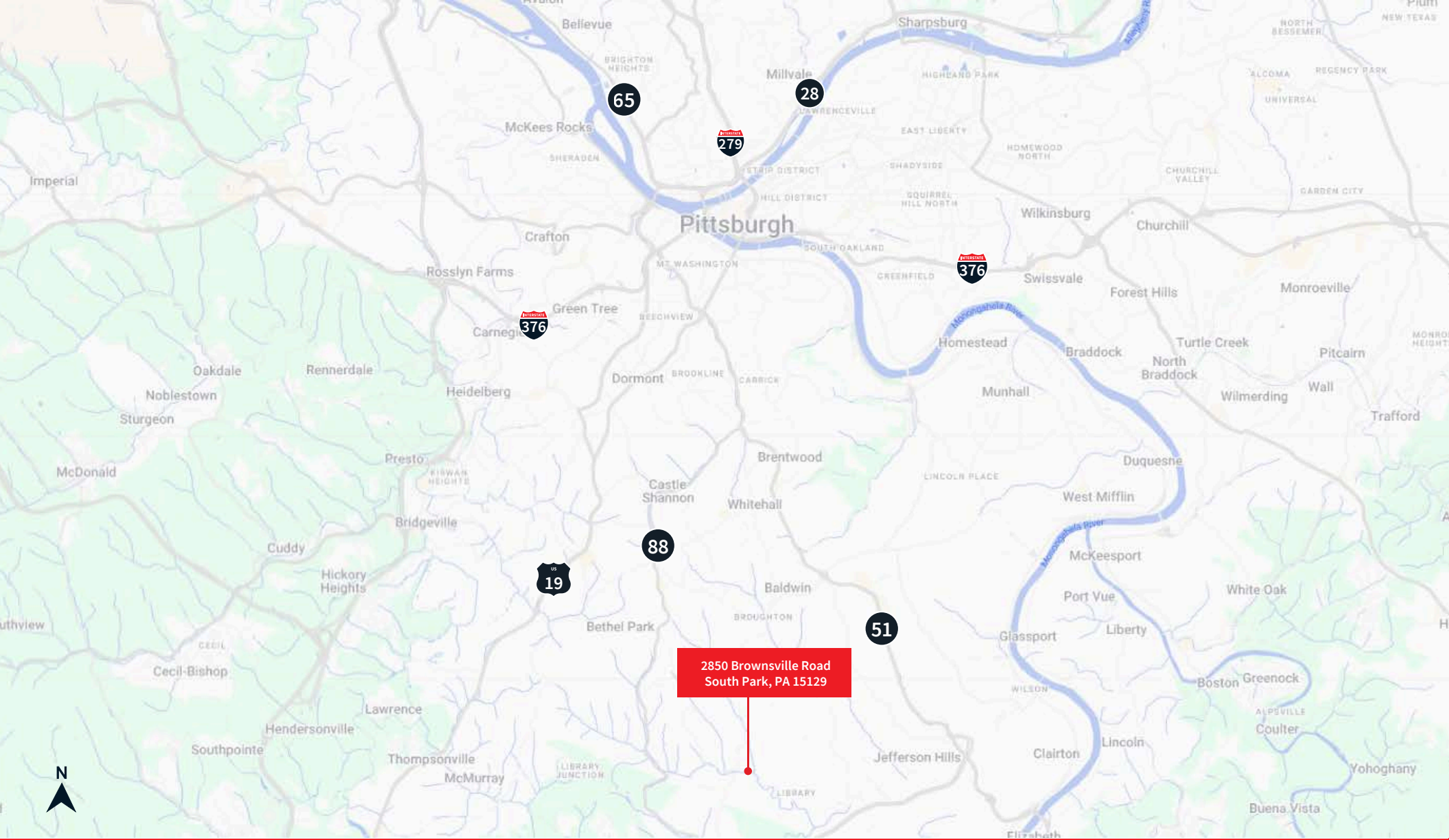
Retail within a 1-mile radius:

- Tim's Floral
- Ricky Dz - bar and grill
- Gram's Place Daycare
- Just The Tip Cigars
- Park Social Bar
- Bear Hug Massage & Spa
- South Park Community Center

Retail within a 3-mile radius:

- Trax Farms
- Dollar General
- Planet Fitness
- Beach House Restaurant
- Lazy Dreamer Farm - coffee shop
- V&V Scratch Kitchen
- Dairy Queen
- Tractor Supply Company





2850 Brownsville Road
South Park, PA 15129

Erin Bell
Vice President
erin.bell@jll.com
724.344.3774

Michelle Stewart
Senior Vice President
michelle.stewart@jll.com
412.849.5726

© 2026 Jones Lang LaSalle IP, Inc. All rights reserved. All information contained herein is from sources deemed reliable; however, no representation or warranty is made to the accuracy thereof.

Jones Lang LaSalle Brokerage, Inc.