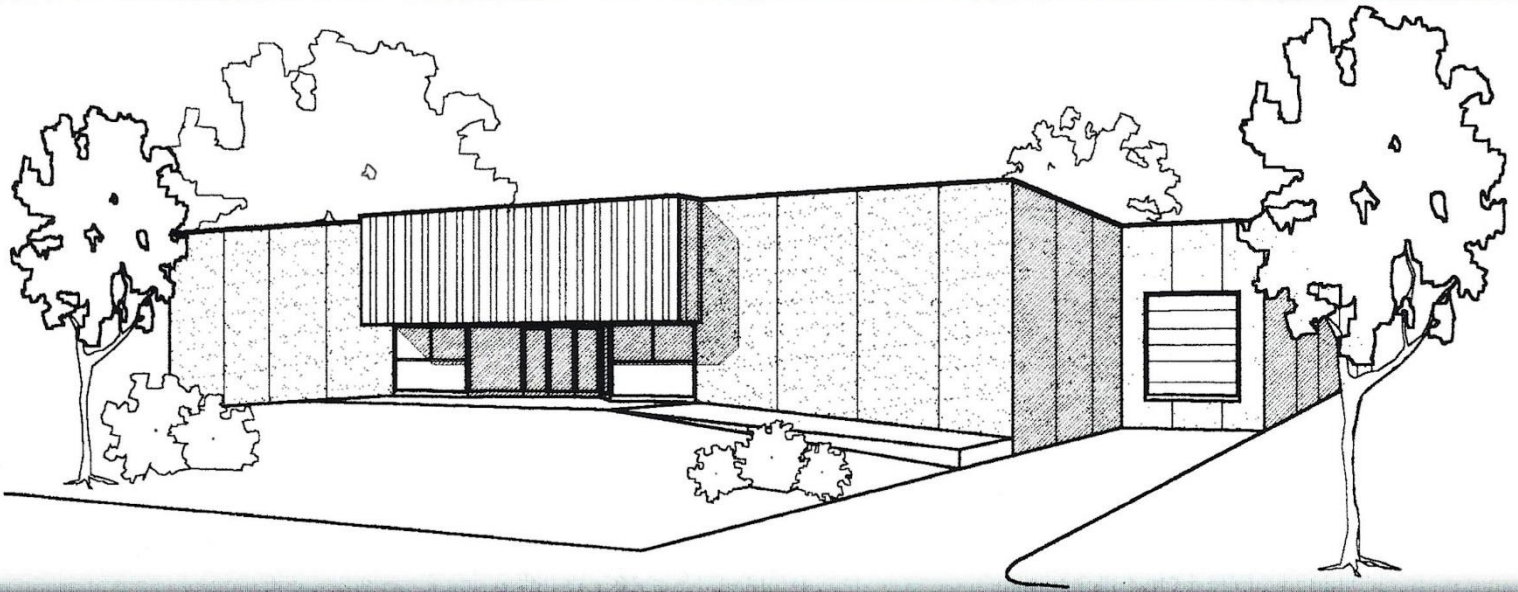


FOR LEASE

REVERE INDUSTRIAL CENTER

Office/Warehouse



3770 Revere Street, Denver, CO

- Easy Access to I-70 & I-225
- Located in Northeast Denver
- Building Size: 15,400 Square Feet
- Divisible By: 7,700 Square Feet
- Dock-high and Drive-in Loading
- Dock-high Loading – 10x10
- 16' Clearance
- Skylights
- Attractive Landscaping
- Zoning: I-2
- Site Plan on Reverse Side
- Drive-in Loading – 10x12 or 10x14

For More Information:
Fall River Investments, Inc.
7700 East Illif Ave, Suite F
Denver, Colorado 80231
(303) 752-2051

SITE PLAN

