



40 EAST
at CITY CREEK

Jordan Johnson

801.321.8711

Jordan.Johnson@propertyreserve.org



Address

40 East 100 South Street, Salt Lake City, Utah 84111

Overview

Class-A office building
39,185 RSF
3 Floors

Located right next to City Creek Center in the heart of downtown Salt Lake City, this contiguous 2-floor space enjoys a prestigious spot directly above Capital Grille, and directly across the street from 111 Main office building and the Eccles Theater

Elevate at City Creek

All City Creek tenants have access to the amenity center, Elevate. Equipped with fitness center, showers, pickle ball, golf simulator, and basketball

Parking

Underground and covered parking available at prevailing market rates

Public Transit

Within easy walking distance to bus stations, TRAX stations, and Front runner stations

Lease Rate

Modified gross lease

Improvements

Generous TI packages available



COMING SOON AT 40 EAST



Break Room

Lobby



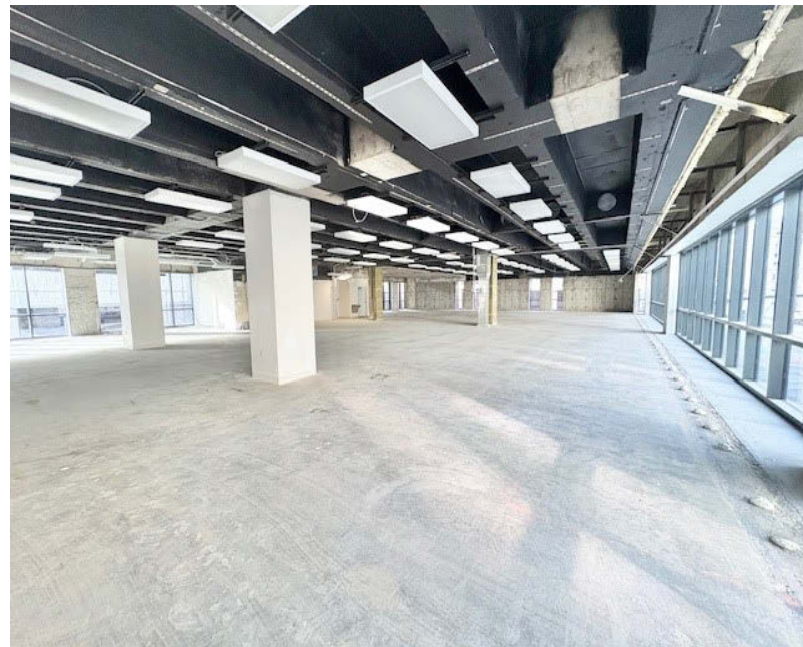
Suite 200

Rentable Square Feet: 11,431

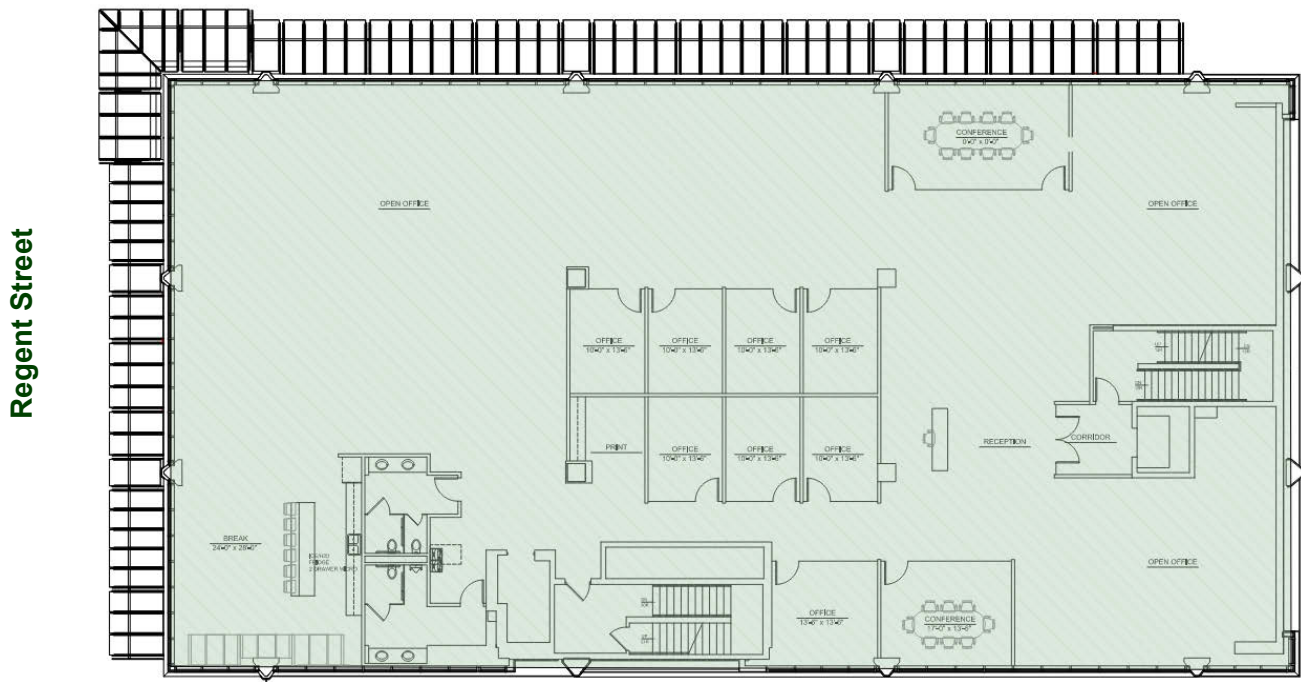
Status: Available

Lease Rates: \$28.00-\$30.00/RSF

Condition: Gray shell ready for immediate build out (conceptual floorplan below)



100 South



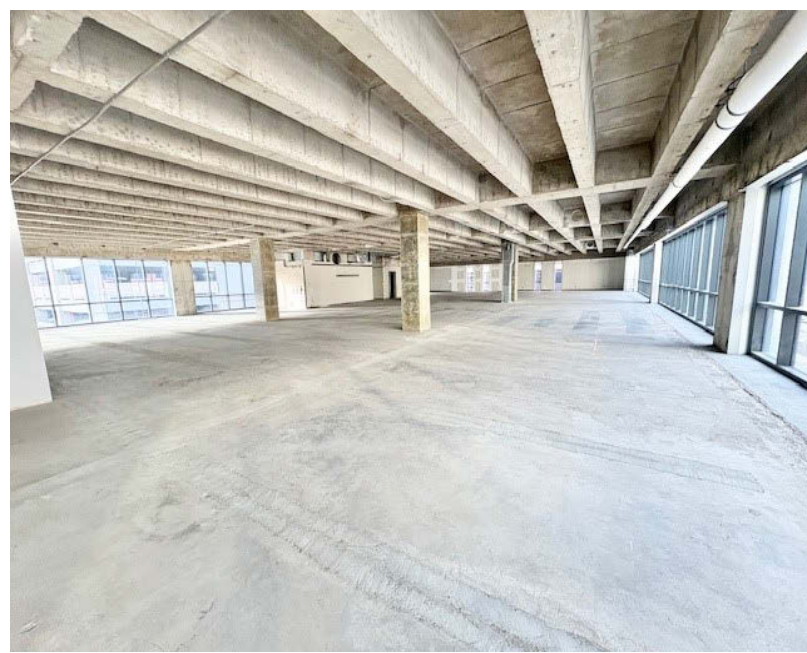
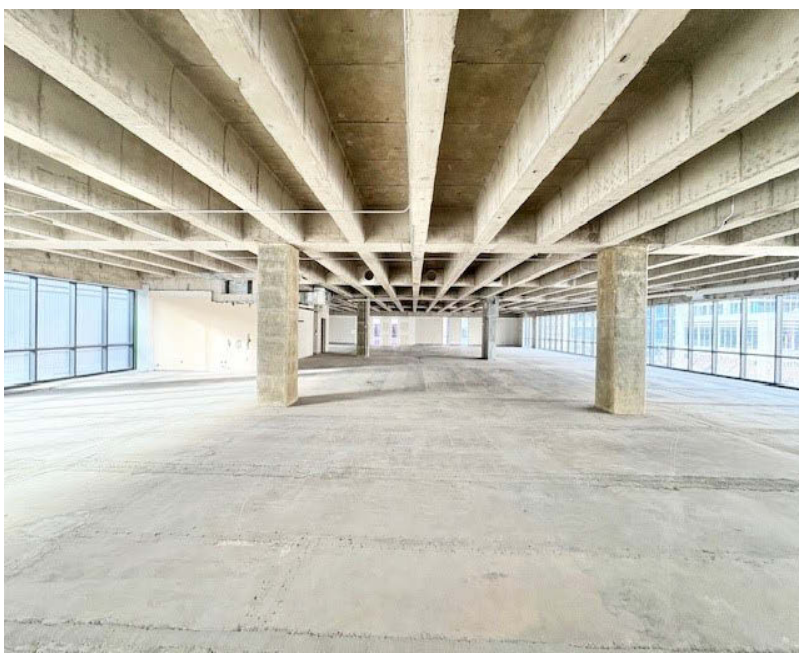
Suite 300

Rentable Square Feet: 11,431

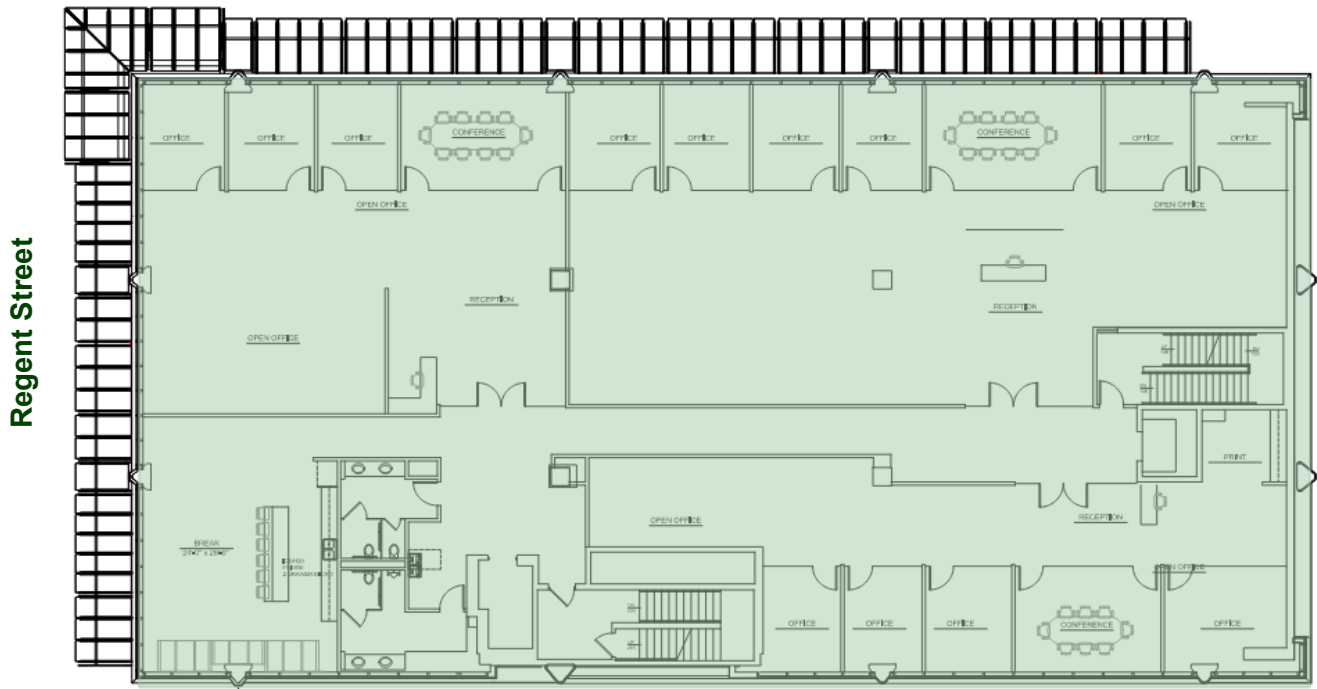
Lease Rates: \$30.00-\$32.00/RSF

Status: Available

Condition: Gray shell ready for immediate build out (conceptual floorplan below)



100 South



In the Heart of Salt Lake City

- Food & Drink
- Experiences
- Lodging



Six World-Famous
Ski Resorts –
30 Minutes →

← To Salt Lake City
International Airport –
10 Minutes



Contact

Jordan Johnson 801.321.8711
Jordan.Johnson@propertyreserve.org



PROPERTY
RESERVE