

# LEASE

73320 EL PASEO, SUITE 1

Palm Desert, CA 92260



**Curtis Barlow**  
760.899.7700  
CalDRE #01380247



**COLDWELL BANKER  
COMMERCIAL**  
LYLE & ASSOCIATES,  
LP

# LEASE

73320 EL PASEO, SUITE 1

Palm Desert, CA 92260



## PROPERTY HIGHLIGHTS

- Located in the heart of the El Paseo Shopping District between Lupine Lane and Sage Lane.
- Adjacent to George Stern Fine Art
- Ideal for retail use
- Immediate occupancy

## OFFERING SUMMARY

Lease Rate:	\$3.00 SF/month (MG)
Available SF:	944 SF

## DEMOGRAPHICS

	1 MILE	3 MILES	5 MILES
Total Households	4,107	19,715	33,644
Total Population	8,998	40,347	68,445
Average HH Income	\$91,771	\$116,750	\$122,751

**Curtis Barlow**  
760.899.7700  
CalDRE #01380247



**COLDWELL BANKER  
COMMERCIAL**  
LYLE & ASSOCIATES,  
LP

# LEASE

73320 EL PASEO, SUITE 1

Palm Desert, CA 92260



**Curtis Barlow**  
760.899.7700  
CalDRE #01380247

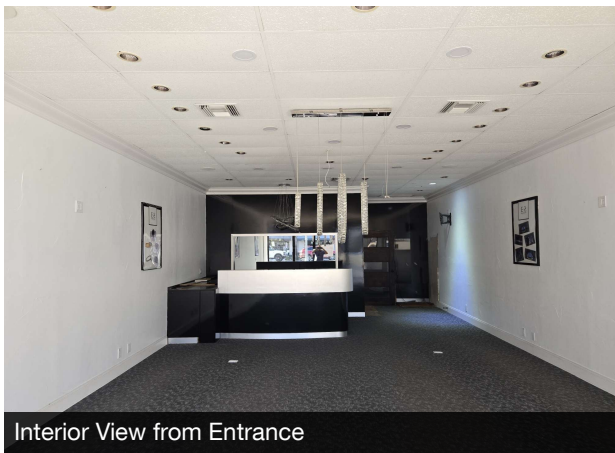


**COLDWELL BANKER  
COMMERCIAL**  
LYLE & ASSOCIATES,  
LP

# LEASE

73320 EL PASEO, SUITE 1

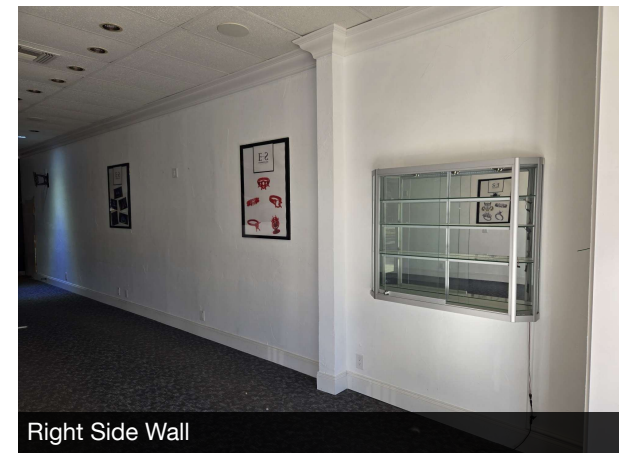
Palm Desert, CA 92260



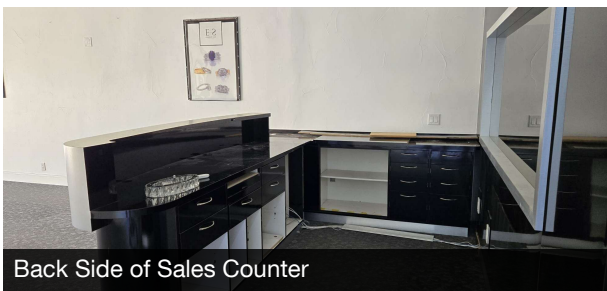
Interior View from Entrance



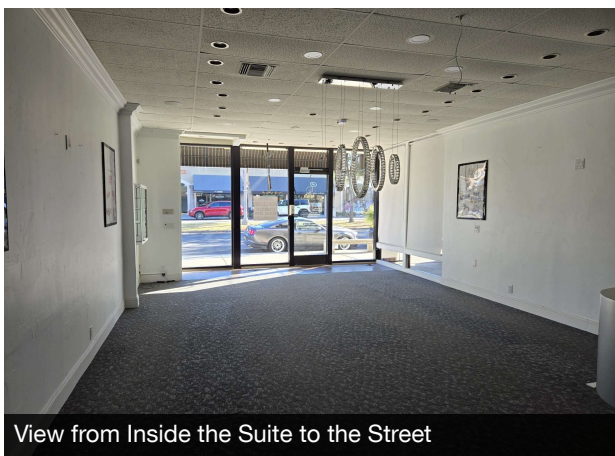
Front Side of Sales Counter



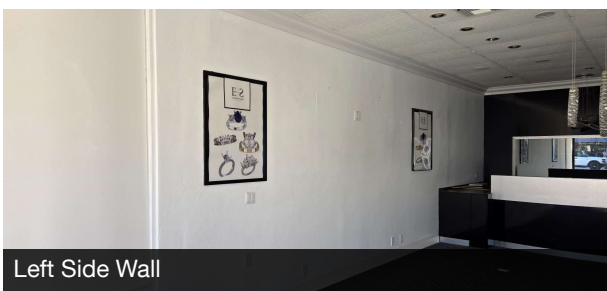
Right Side Wall



Back Side of Sales Counter



View from Inside the Suite to the Street



Left Side Wall



Backroom

**Curtis Barlow**  
760.899.7700  
CalDRE #01380247

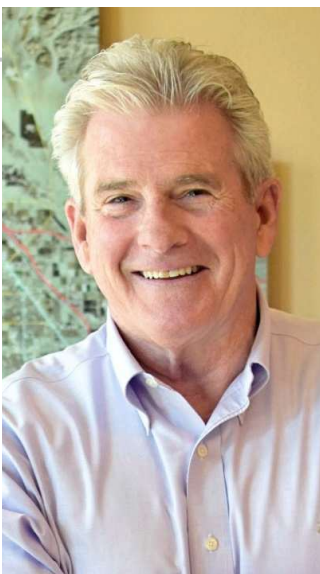


**COLDWELL BANKER  
COMMERCIAL**  
LYLE & ASSOCIATES,  
LP

# LEASE

73320 EL PASEO, SUITE 1

73320 El Paseo, Suite 1 Palm Desert, CA 92260



**CURTIS BARLOW**

Executive Vice President

**Direct:** 760.899.7700 **Cell:** 760.899.7700  
cbarlow@cbclyle.net

CalDRE #01380247

---

**Curtis Barlow**  
760.899.7700  
CalDRE #01380247



**COLDWELL BANKER**  
**COMMERCIAL**  
LYLE & ASSOCIATES,  
LP