



**F.C. Tucker  
Commercial**

**AVAILABLE**

**3900 N Green River Road**  
EVANSVILLE, IN 47715



*Property lines are approximate*

## 6.5 Acres<sup>+/-</sup> - Corner Lot

- **Sale Price:** \$1,650,000
- **Lot Size:** 6.5 Acres<sup>+/-</sup>
- **Zoning:** C-4
- **Sewer:** Available
- **Current Use:** Vacant Land
- **Taxes:** \$8,103.96 (2023 Pay 2024)
- **Showing:** Contact Listing Broker
- **Location:** NW Corner of N Green River Road and Lynch Road
- **Traffic Count:** 43,959 AADT, Combined

Beautiful, open, corner-lot located at major intersection on North Green River Road and Lynch Road. 6.5 acres<sup>+/-</sup> with about 4 acres usable. Great opportunity property; an ideal hotspot for a hotel or restaurant. This land sits in a high-traffic area with a daily traffic count of around 44,000 vehicles.

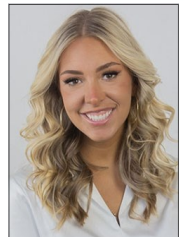
**For More Information, Contact:**

**Sinclair Sheffer**

**Direct: 812.550.2959**

**Office: 812.473.6677**

**[sinclairsheffer@fctuckercommercial.com](mailto:sinclairsheffer@fctuckercommercial.com)**



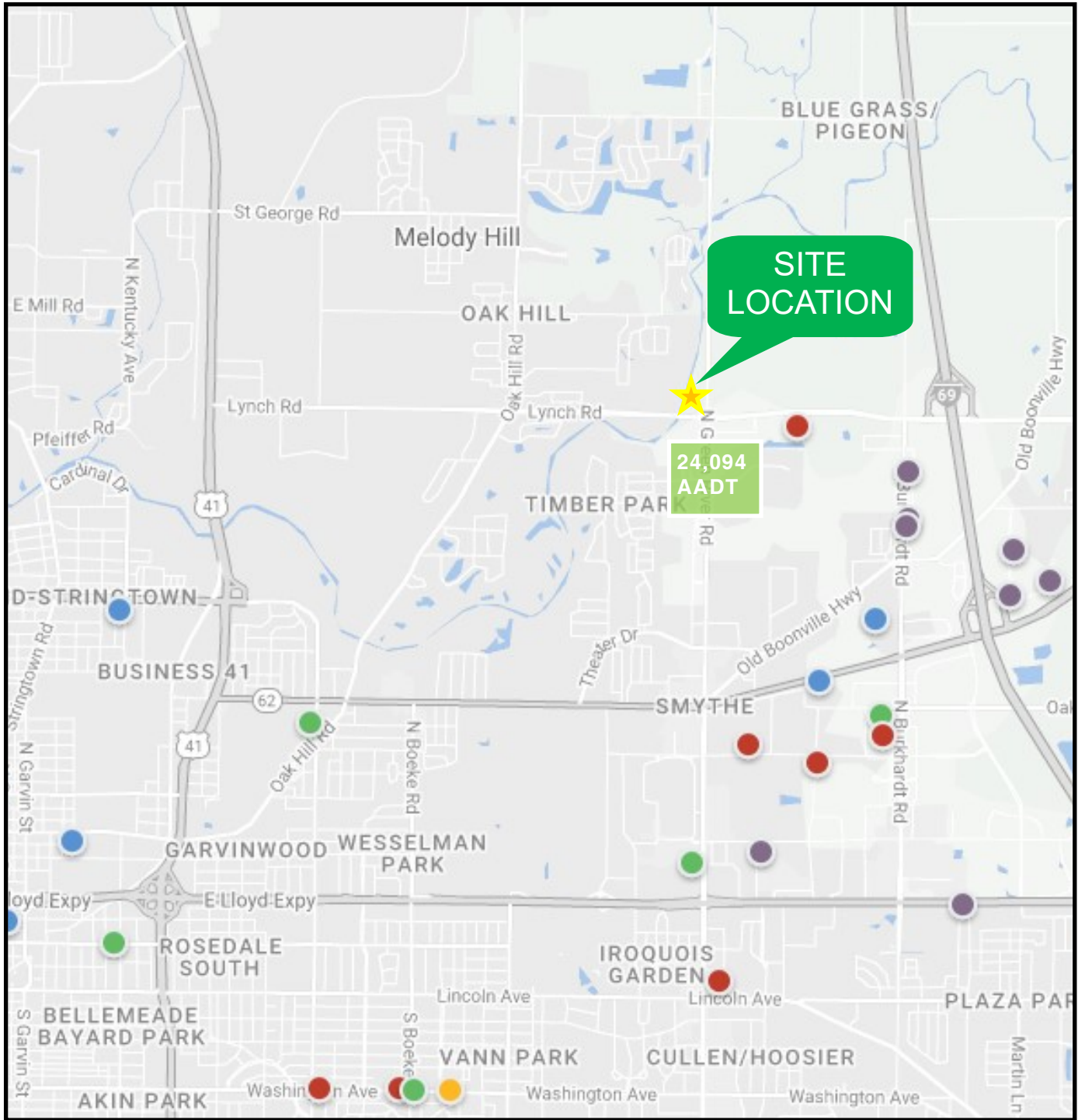
7820 Eagle Crest Blvd. Suite 200  
Evansville, IN • 47715  
812-473-6677 • Fax: 812-473-6684



**FCTuckerCommercial.com**

The information contained herein was obtained from sources we consider reliable. We cannot be responsible, however, for errors, omissions, prior sale, and withdrawal from the market or change in price.

# Available Property



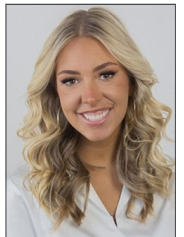
**For More Information, Contact:**

**Sinclair Sheffer**

**Direct: 812.550.2959**

**Office: 812.473.6677**

**[sinclairsheffer@fctuckercommercial.com](mailto:sinclairsheffer@fctuckercommercial.com)**



7820 Eagle Crest Blvd. Suite 200  
Evansville, IN • 47715  
812-473-6677 • Fax: 812-473-6684



**FCTuckerCommercial.com**

The information contained herein was obtained from sources we consider reliable. We cannot be responsible, however, for errors, omissions, prior sale, and withdrawal from the market or change in price.