

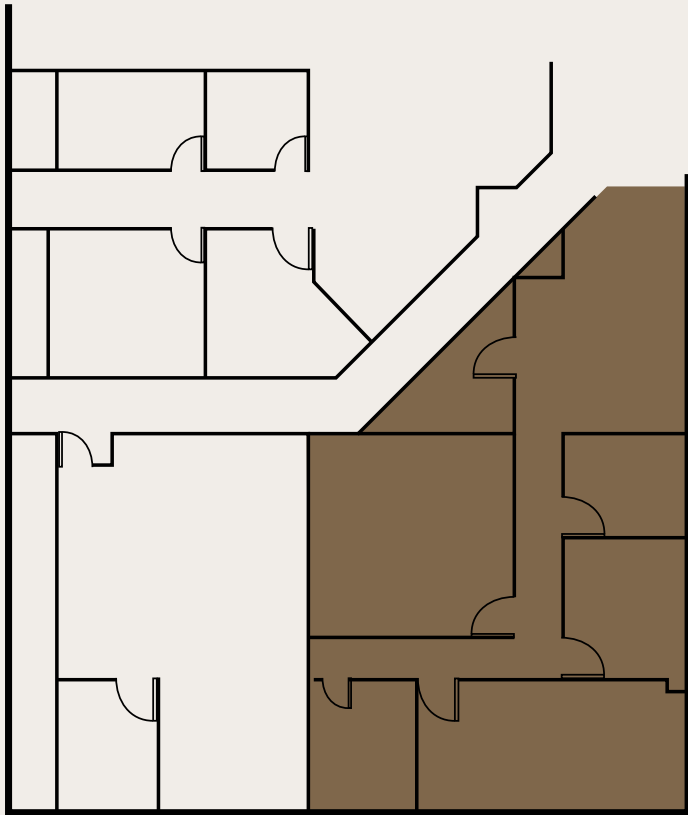


Stoney Batter Office Building – 5301 Limestone Road, Wilmington, DE
Office & Medical space available in the heart of Pike Creek

Suite Availabilities

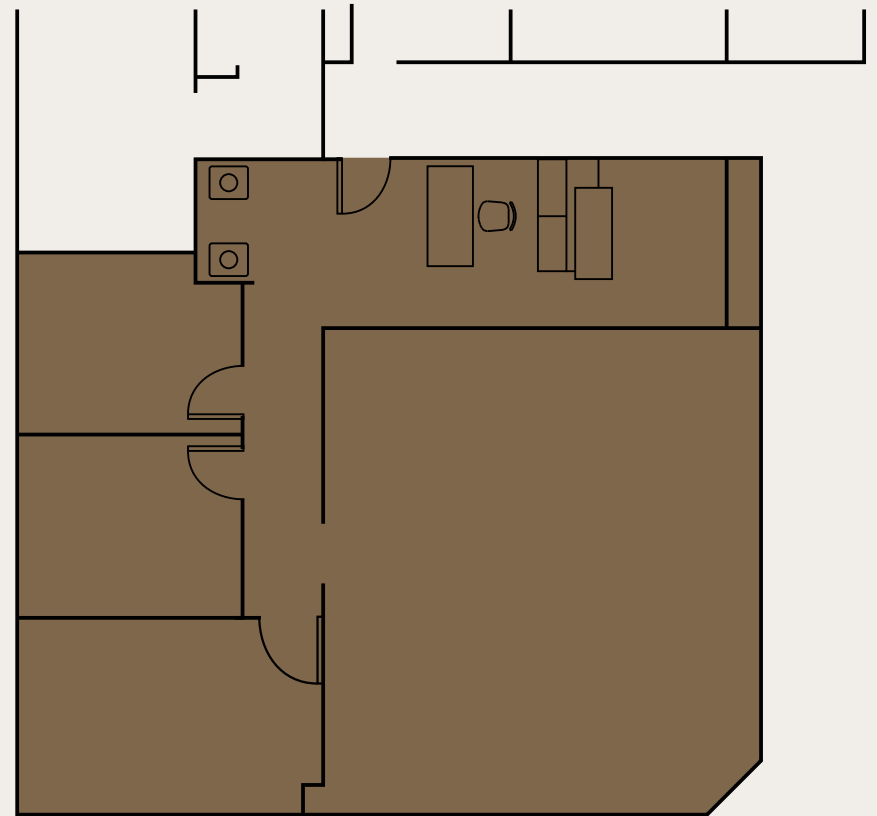
SUITE 106: 2,190 SF

Exposure to main lobby. Suite includes three private offices and support areas.



SUITE 123: 1,750 SF

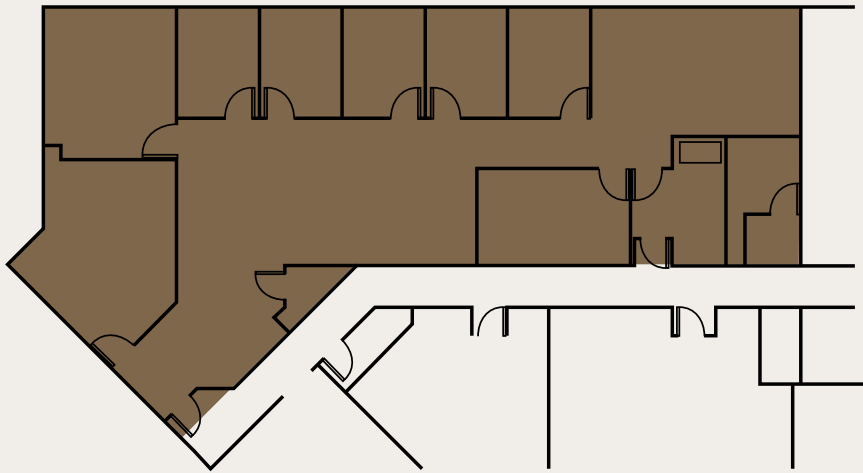
Suite includes three private areas and large/flexible work area.



Suite Availabilities

SUITE 222: 3,749 SF

Modern fit-out includes six private offices and ample support areas.



EXISTING TENANT MIX INCLUDES

- Simon Eye
- LabCorp
- Edward Jones Investments
- Meridian Bank



Location

Highly visible location in the heart of
Pike Creek's commercial corridor

Pylon signage available with visibility from
Limestone Road (Route 7)



Location





Owned and managed by Unity Asset Management. Unity Asset Management is a full service real estate development & management company, family owned and operated since 1960. Unity owns and manages over 850,000 SF of retail, office, and warehouse space with experienced property management staff.

Blaise Fletcher
Managing Director
blaise.fletcher@jll.com
+1 302 356 2861

Jamie Vari
Executive Vice President
jamie.vari@jll.com
+1 302 750 1404



Although information has been obtained from sources deemed reliable, JLL does not make any guarantees, warranties or representations, express or implied, as to the completeness or accuracy as to the information contained herein. Any projections, opinions, assumptions or estimates used are for example only. There may be differences between projected and actual results, and those differences may be material. JLL does not accept any liability for any loss or damage suffered by any party resulting from reliance on this information. If the recipient of this information has signed a confidentiality agreement with JLL regarding this matter, this information is subject to the terms of that agreement. ©2025 Jones Lang LaSalle Brokerage, Inc. All rights reserved.