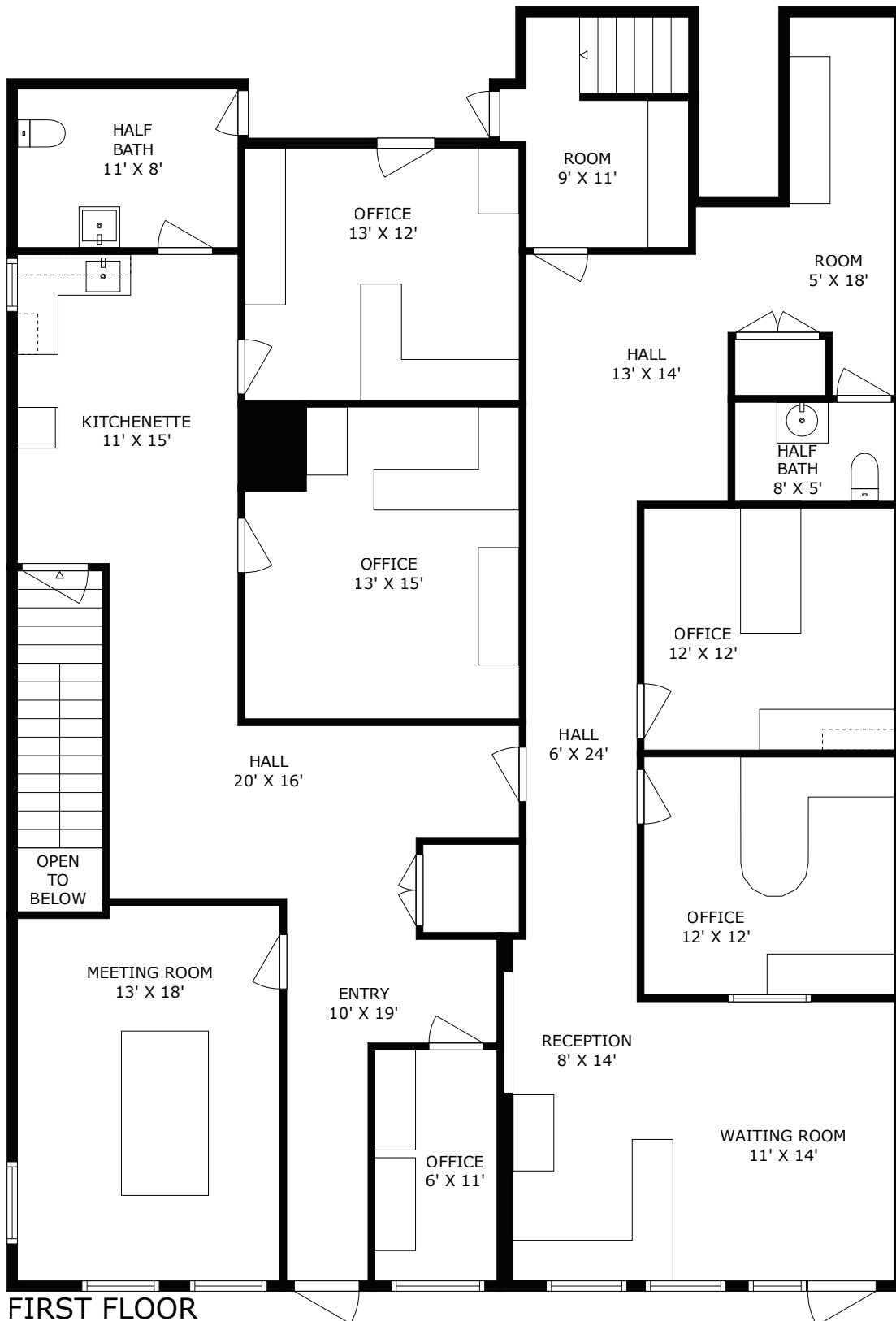


24 Montauk Avenue, New London, CT

first floor



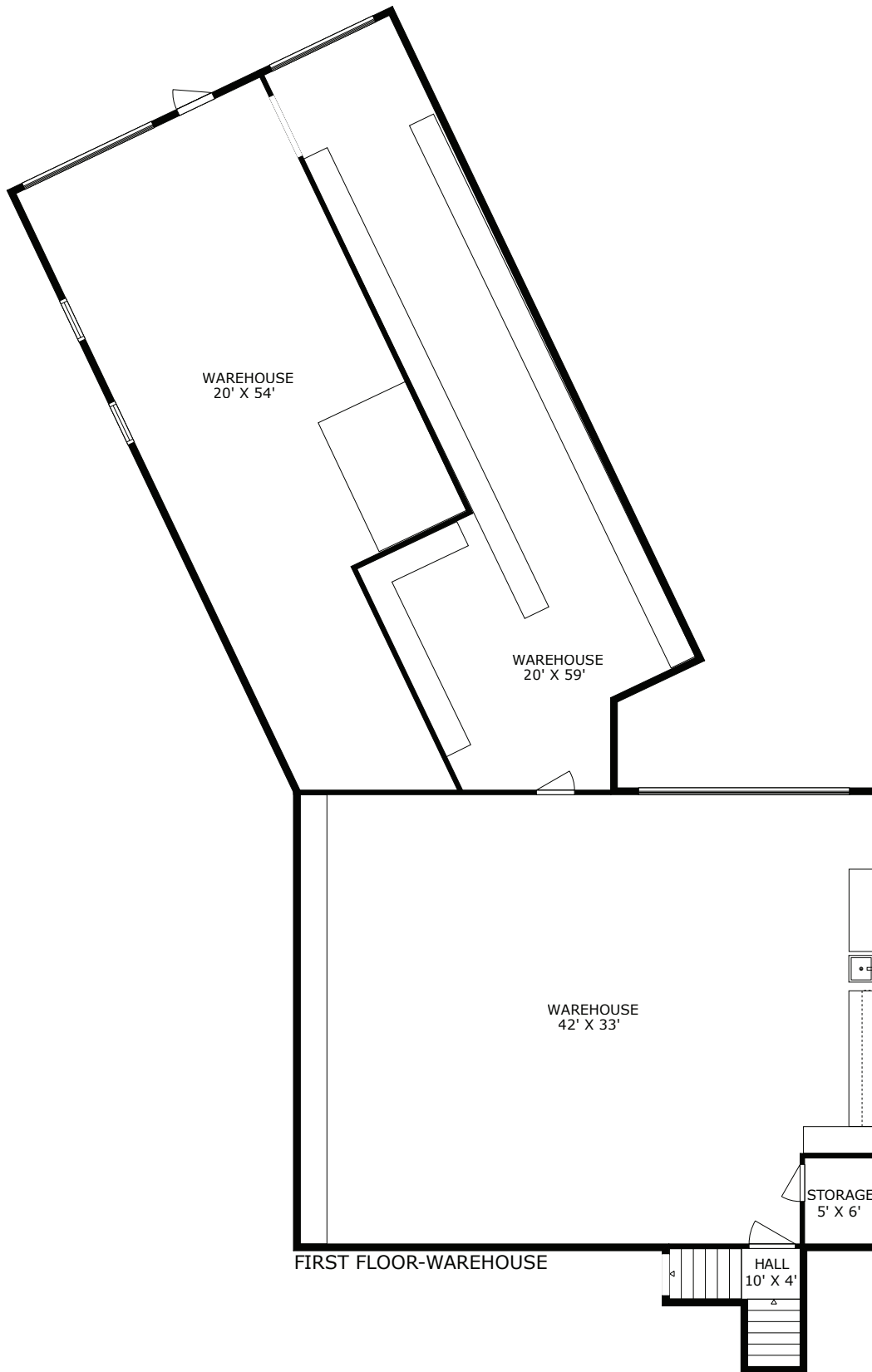
TOTAL: 5487 sq. ft

FIRST FLOOR: 2415 sq. ft, FIRST FLOOR-WAREHOUSE: 3072 sq. ft
EXCLUDED AREAS: ROOM: 311 sq. ft, UNDEFINED: 44 sq. ft, STORAGE: 1431 sq. ft,
UTILITY: 391 sq. ft, OPEN TO BELOW: 13 sq. ft, WALLS: 367 sq. ft

This Floor Plan Is An Approximation, And Is Intended For Marketing Purposes Only

24 Montauk Avenue, New London, CT

first floor warehouse

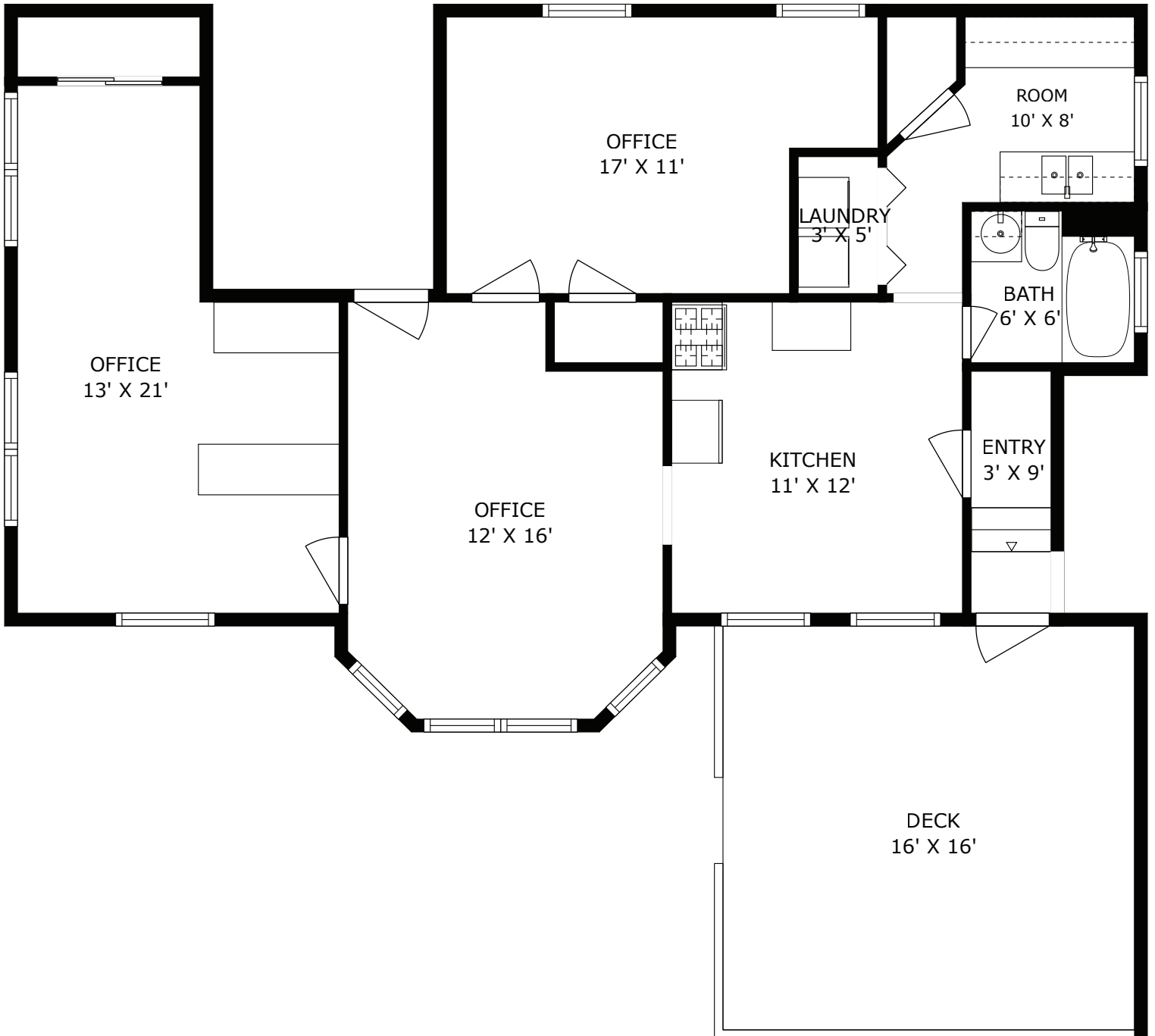


TOTAL: 5487 sq. ft

FIRST FLOOR: 2415 sq. ft, FIRST FLOOR-WAREHOUSE: 3072 sq. ft
EXCLUDED AREAS: ROOM: 311 sq. ft, UNDEFINED: 44 sq. ft, STORAGE: 1431 sq. ft,
UTILITY: 391 sq. ft, OPEN TO BELOW: 13 sq. ft, WALLS: 367 sq. ft

This Floor Plan Is An Approximation, And Is Intended For Marketing Purposes Only

24 Montauk Avenue, Unit 1, New London, CT



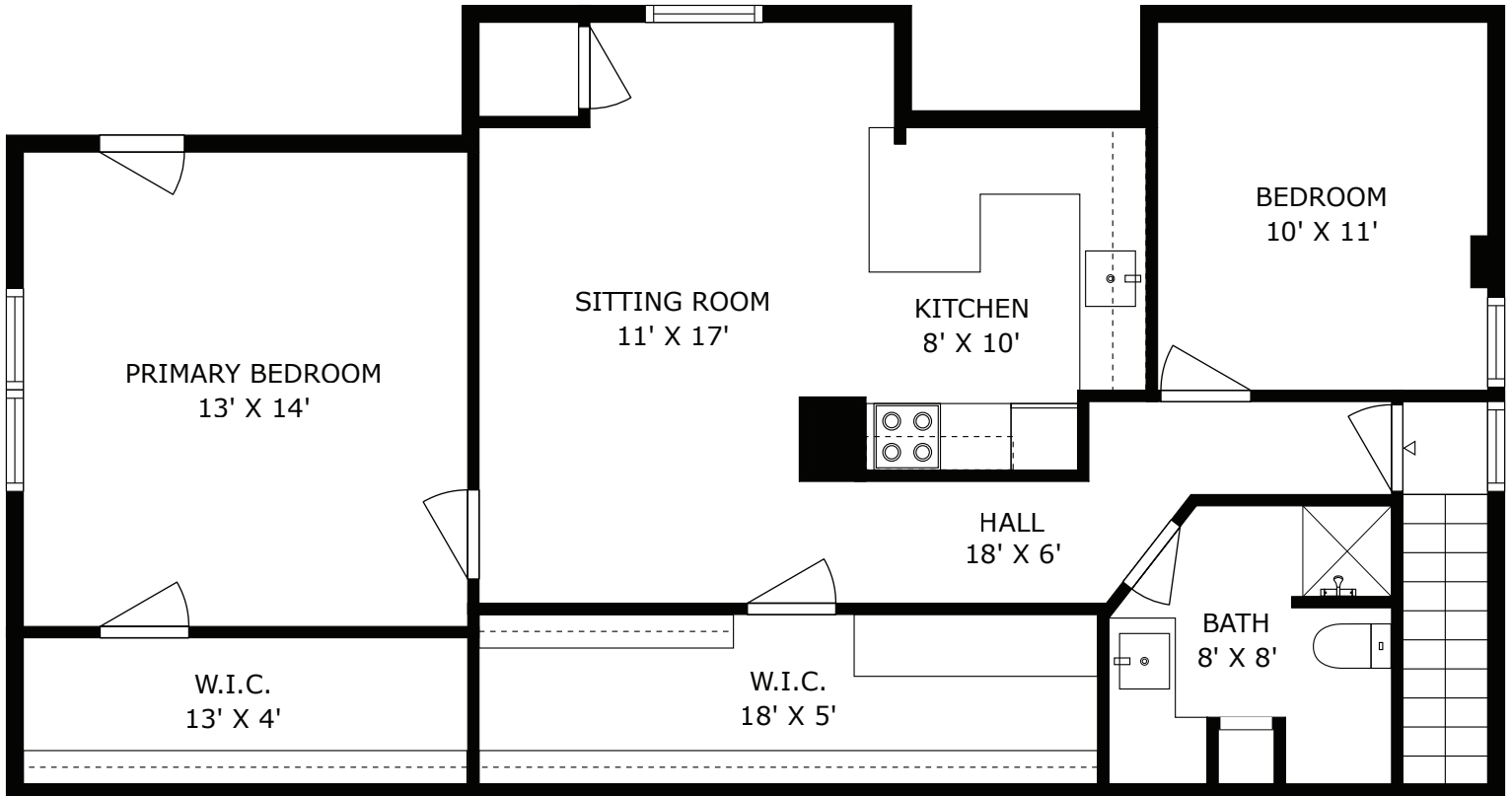
TOTAL: 914 sq. ft

UNIT 1: 914 sq. ft

EXCLUDED AREAS: DECK: 251 sq. ft, WALLS: 90 sq. ft

This Floor Plan Is An Approximation, And Is Intended For Marketing Purposes Only

24 Montauk Avenue, Unit 2, New London, CT



TOTAL: 709 sq. ft

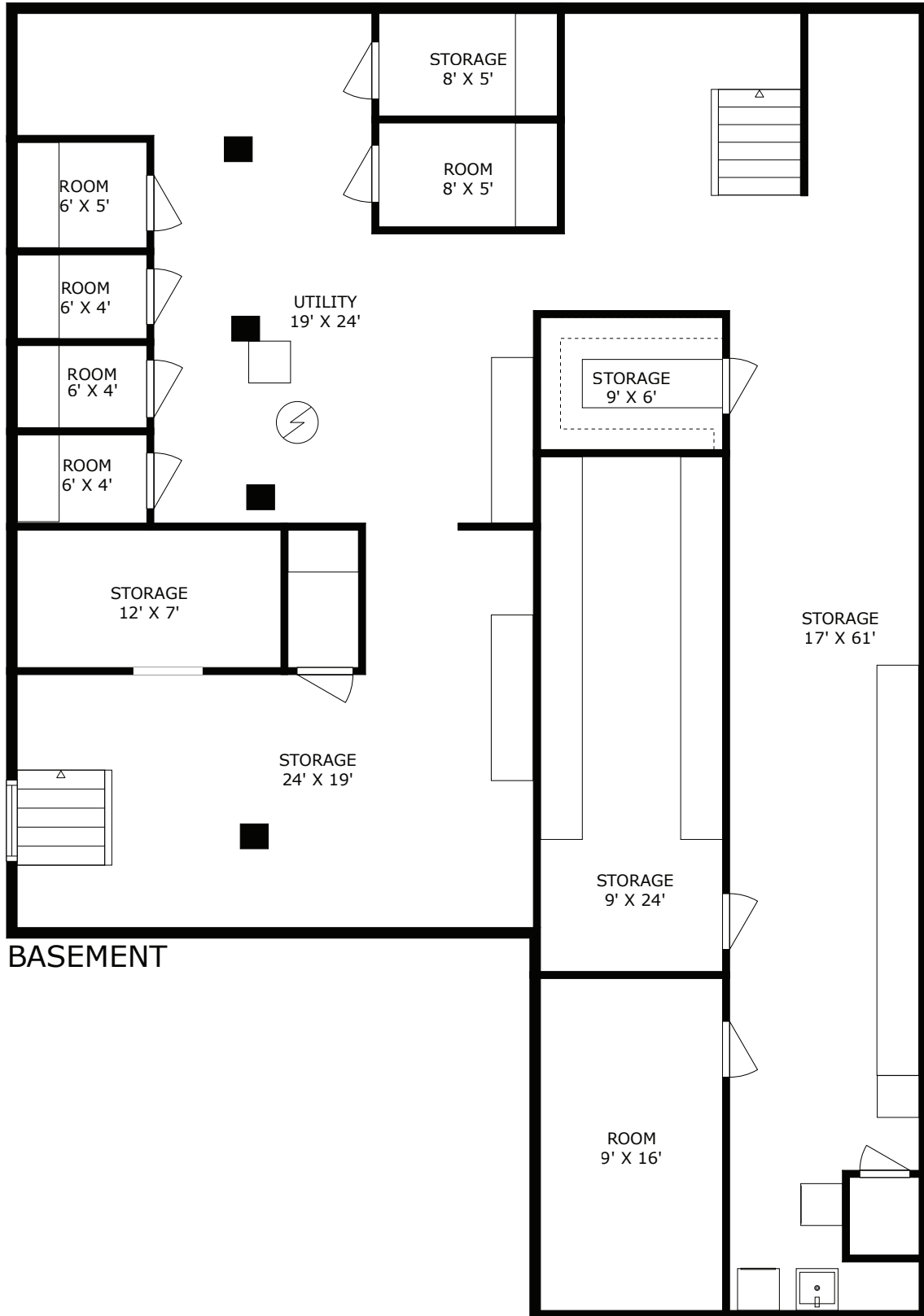
UNIT 2: 709 sq. ft

EXCLUDED AREAS: LOW CEILING: 191 sq. ft, WALLS: 71 sq. ft

This Floor Plan Is An Approximation, And Is Intended For Marketing Purposes Only

24 Montauk Avenue, New London, CT

basement



TOTAL: 5487 sq. ft

FIRST FLOOR: 2415 sq. ft, FISRT FLOOR-WAREHOUSE: 3072 sq. ft
EXCLUDED AREAS: ROOM: 311 sq. ft, UNDEFINED: 44 sq. ft, STORAGE: 1431 sq. ft,
UTILITY: 391 sq. ft, OPEN TO BELOW: 13 sq. ft, WALLS: 367 sq. ft

This Floor Plan Is An Approximation, And Is Intended For Marketing Purposes Only