

1122 Lexington Avenue

UPPER EAST SIDE
NEW YORK, NY



NEWMARK

1122 LEXINGTON AVENUE

Property Details

Location

Northwest corner of East 78th Street

Approximate Size

Ground Floor 4,200 SF

Basement 2,000 SF

Term

Long Term

Possession

Arranged

Site Status

Currently FedEx

Neighbors

Butterfield Market, Starbucks, Venchi, Dos Toros, Bank of America, Pick-A-Bagel, Duane Reade, Juice Press, Chopt, Lenwich, The Shade Store, Spectrum, Charles Schwab

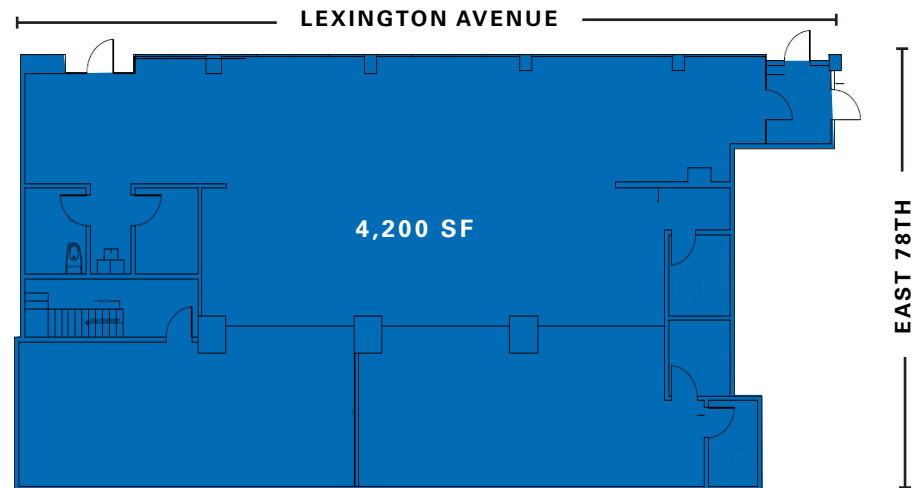
Comments

Prime Upper East Side corner steps from the 6 train stop at 77th Street & Lexington Avenue

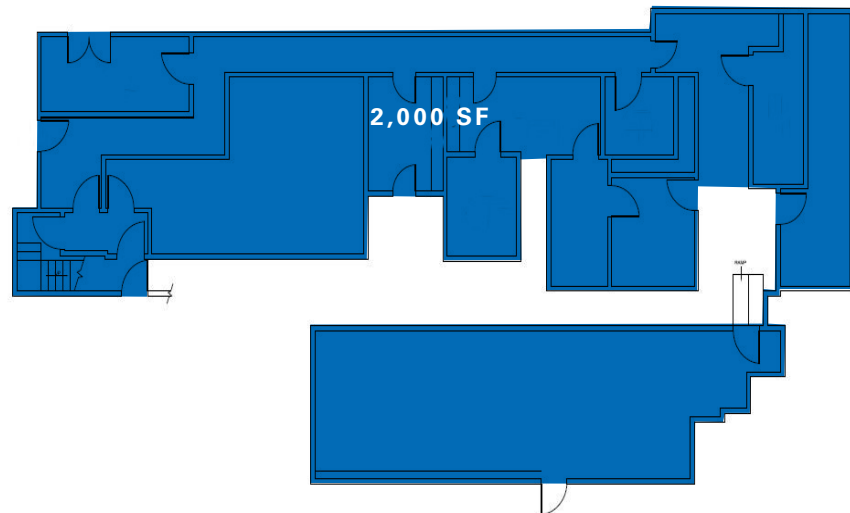
Steps from Lenox Hill Hospital

All uses considered

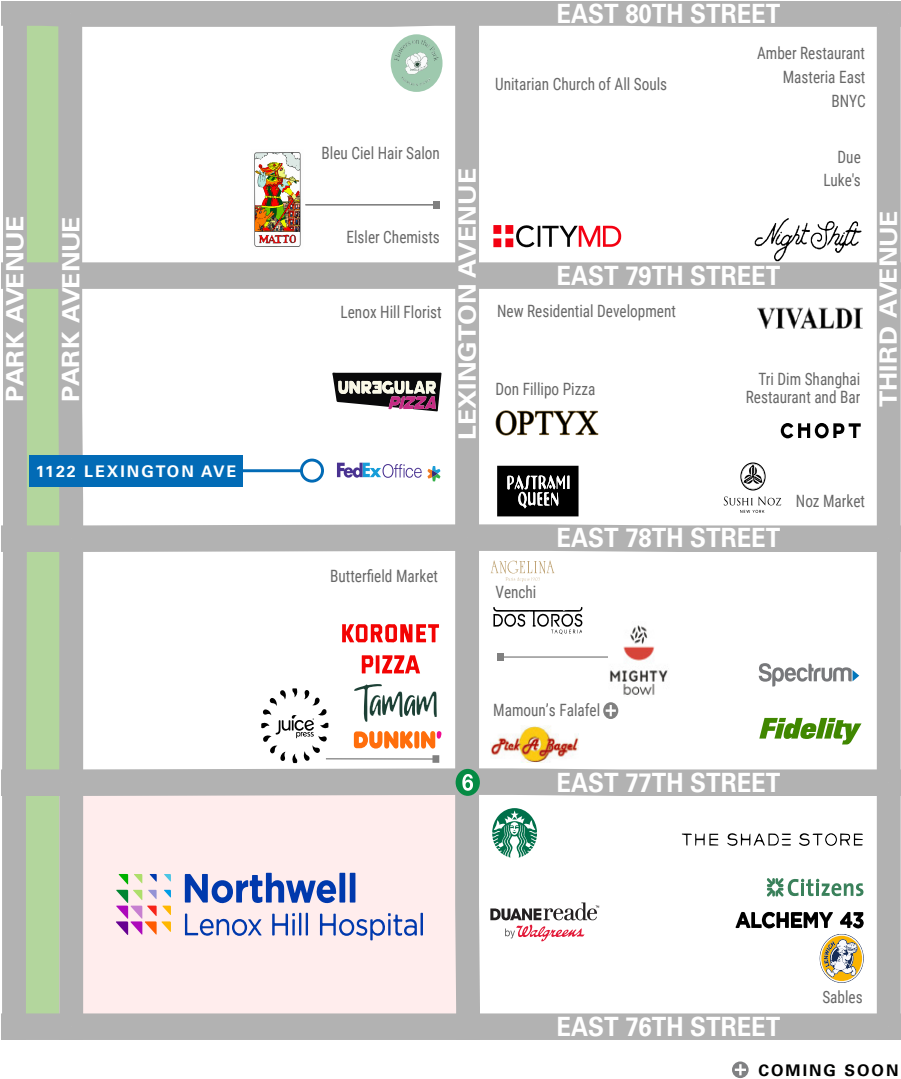
Ground Floor



Basement



1122 LEXINGTON AVENUE



CONTACT

Michael Paster
t 212-351-9345
michael.paster@nmrk.com

Mitch Heifetz
t 212-916-2934
mitchell.heifetz@nmrk.com

nmrk.com