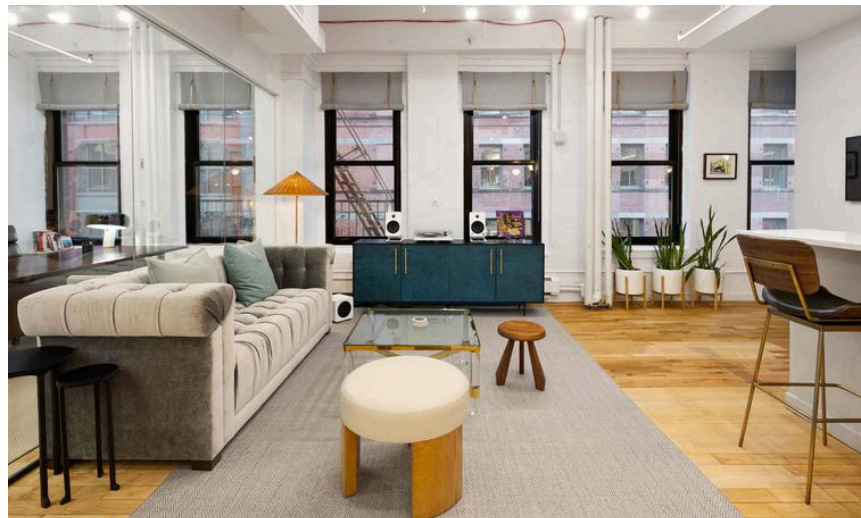


As exclusive agents, we are  
pleased to present the following  
prime space for sublease:

# 110 Greene Street New York, NY 10012

BETWEEN PRINCE & SPRING ST



partial 5th floor  
2,501 square feet

immediate possession  
term through February 28, 2030

prebuilt,  
high-end  
**sublease**  
space  
in the heart of  
**Soho**

For more information, please [contact](#):

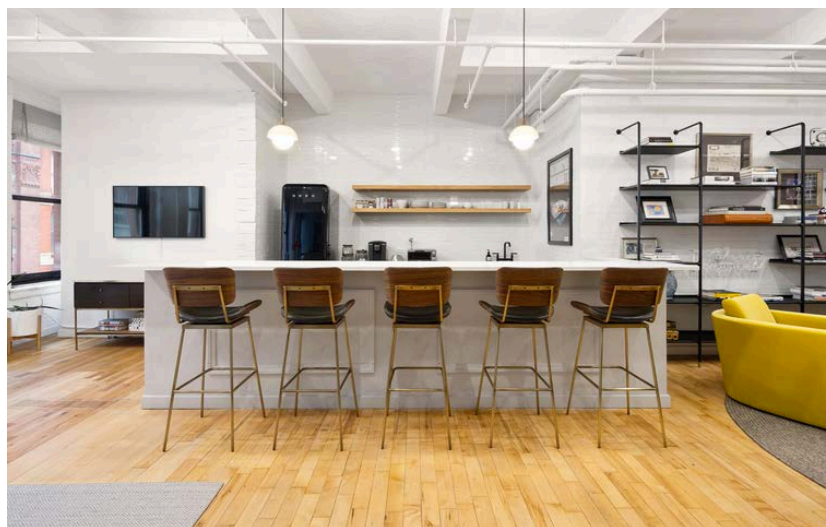
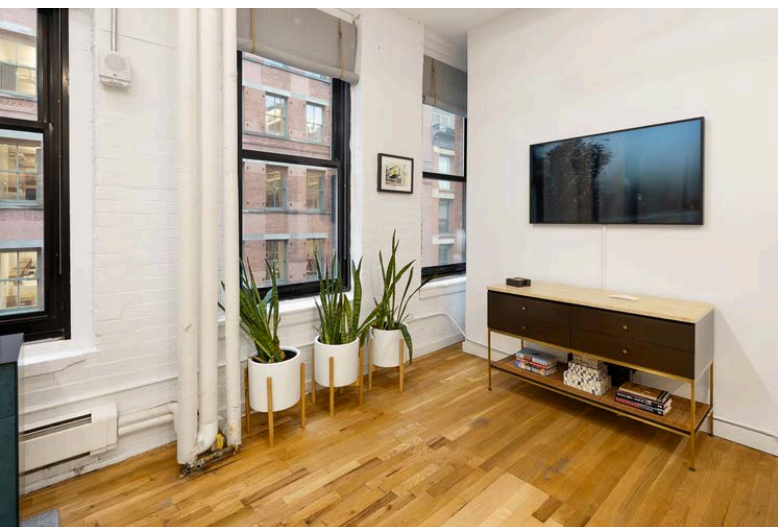
Dennis Someck  
Exec. Managing Director  
| Principal  
212.776.1270 | 917.653.1177  
dsomeck@lee-associates.com

Justin Myers  
Exec. Managing Director  
| Principal  
212.776.1281 | 619.840.7360  
jmyers@lee-associates.com

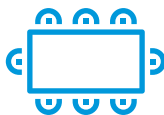
Woody King  
Managing Director  
212.776.4352 | 240.476.7507  
wking@lee-associates.com







Furniture can be included



One glass conference room



One glass office or meeting room



Open seating area



Eat in cafe-style pantry with bar



Nice natural light



Common tenant rooftop



24/7 attended lobby

For more information, please [contact](#):

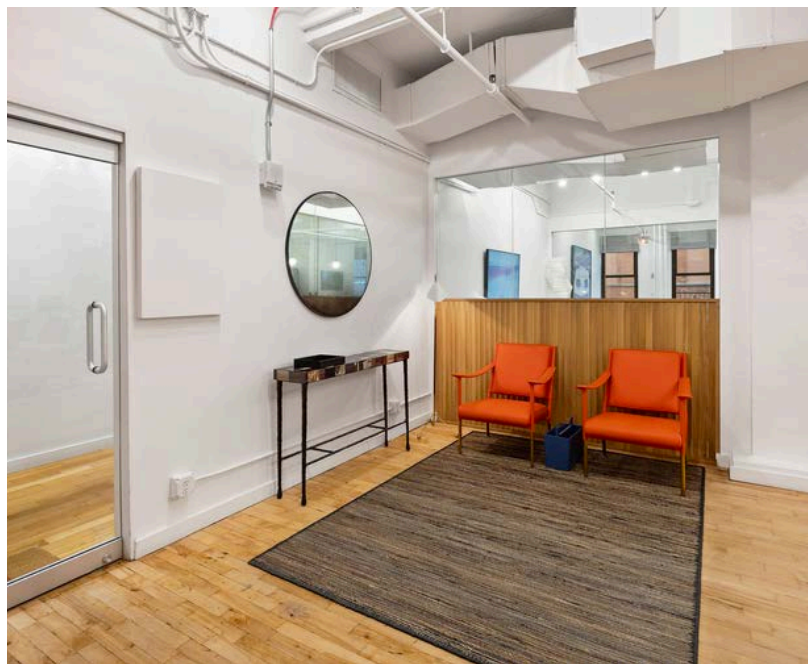
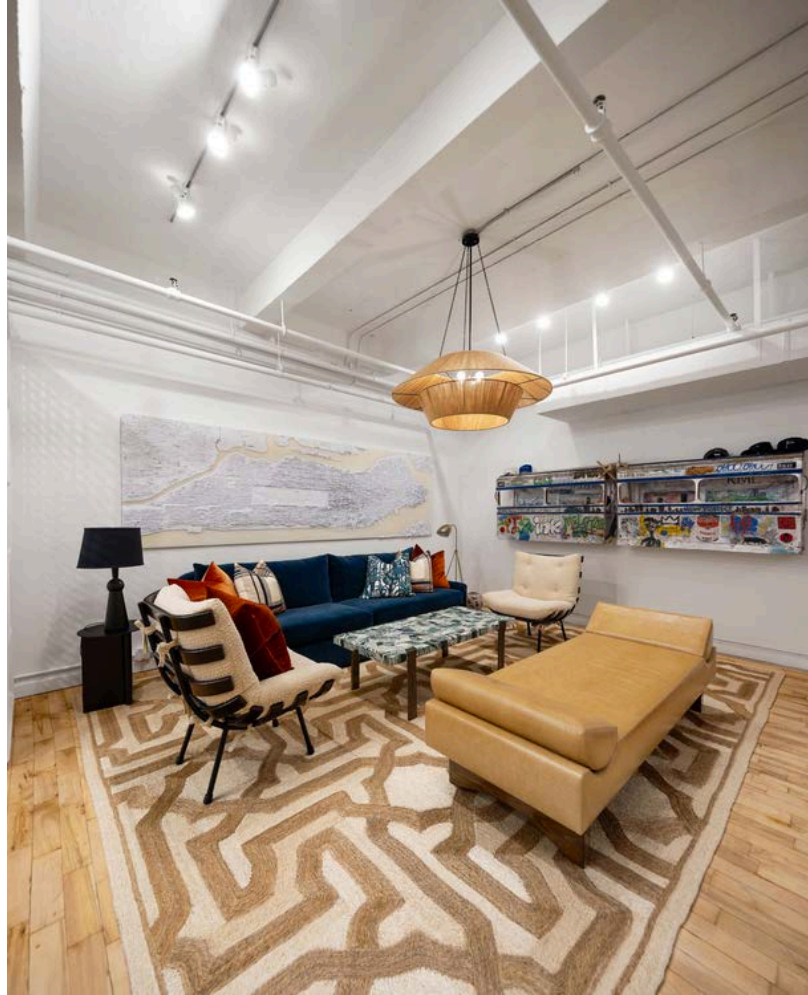
Dennis Someck  
Exec. Managing Director  
| Principal  
212.776.1270 | 917.653.1177  
dsomeck@lee-associates.com

Justin Myers  
Exec. Managing Director  
| Principal  
212.776.1281 | 619.840.7360  
jmyers@lee-associates.com

Woody King  
Managing Director  
212.776.4352 | 240.476.7507  
wking@lee-associates.com







For more information, please [contact](#):

Dennis Someck  
Exec. Managing Director  
| Principal  
212.776.1270 | 917.653.1177  
dsomeck@lee-associates.com

Justin Myers  
Exec. Managing Director  
| Principal  
212.776.1281 | 619.840.7360  
jmyers@lee-associates.com

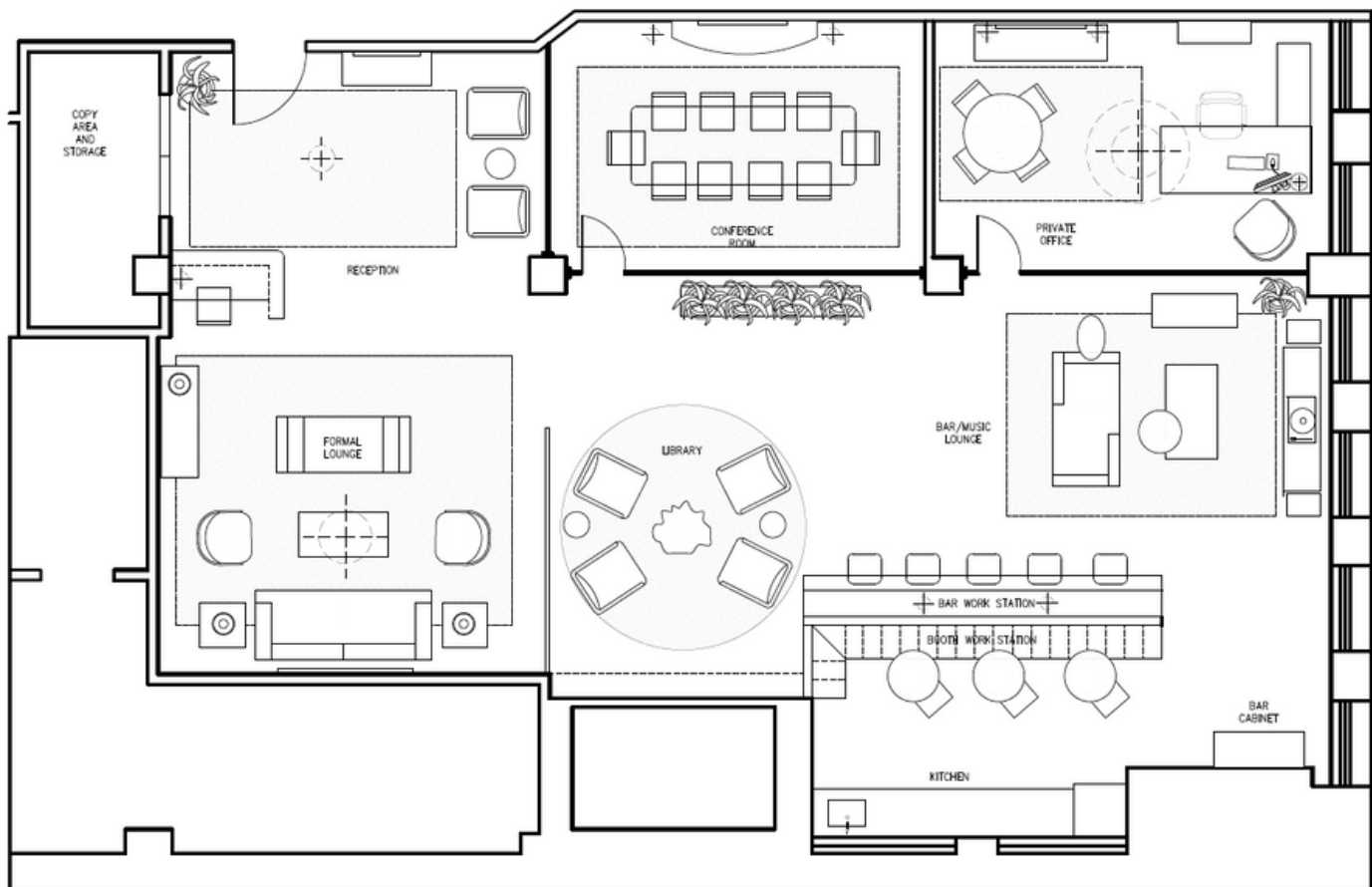
Woody King  
Managing Director  
212.776.4352 | 240.476.7507  
wking@lee-associates.com



# 110 Greene Street New York, NY 10012

BETWEEN PRINCE & SPRING ST

## Floor Plan - Partial 5th Floor



For more information, please [contact](#):

Dennis Someck  
Exec. Managing Director  
| Principal  
212.776.1270 | 917.653.1177  
dsomeck@lee-associates.com

Justin Myers  
Exec. Managing Director  
| Principal  
212.776.1281 | 619.840.7360  
jmyers@lee-associates.com

Woody King  
Managing Director  
212.776.4352 | 240.476.7507  
wking@lee-associates.com

