



FLEX SPACE FOR LEASE

3600 S MACARTHUR, SUITE A, OKLAHOMA CITY, OK

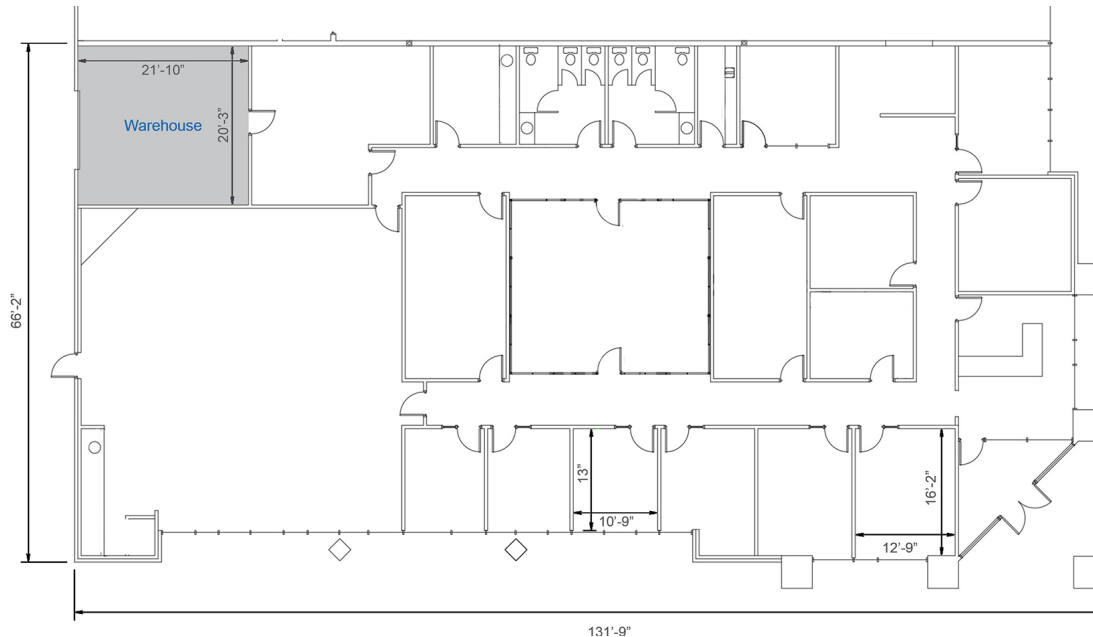
BRETT PRICE, CCIM, SIOR
bprice@newmarkrp.com
C: 405.613.8380

KRIS DAVIS, SIOR
kgdavis@newmarkrp.com
C: 405.202.9525

KARLEY HARPER, CCIM
kharper@newmarkrp.com
C: 405.371.3498

NEWMARK
ROBINSON PARK

FLEX SPACE / FOR LEASE



DETAILS

| | |
|---------------|---------------------|
| Available SF | 8,659 SF |
| Lease Rate | Contact Broker |
| Building Size | 44,750 SF |
| Zoning | I-3 |
| Year Built | 2001 |
| Lot Size | 4.11 Acres |
| Cross Streets | SW 36th & MacArthur |

HIGHLIGHTS

8,209 SF office space, 450 SF warehouse space

1 grade level door

15 offices

Break room

19' clear height

T-8 & HPS lighting

PROPERTY OVERVIEW

Airport Business Center is a 44,750 square foot flex building with frontage along S MacArthur Blvd. and less than 1/2 mile from Hwy 152. The property is located approximately 2 miles from Will Rogers World Airport and Mike Maroney Aeronautical Center.



204 N. Robinson, Ste 700 OKC, OK, 73102 | for more information, visit us at
110 W. 7th, Ste 2600 Tulsa, OK, 74119 | NEWMARKRP.COM

The information contained herein was obtained from sources believed reliable; however, Newmark Robinson Park makes no guarantees, warranties or representations as to the completeness or accuracy thereof. The presentation of this property is submitted subject to errors, omissions, change of price or conditions prior to sale or lease, or withdrawal without notice. Independently Owned and Operated.