



For Sublease

1615 Jungermann Road
Saint Peters, Missouri 63304



3,050 SF Available

Property Highlights

- Sublease available through 1/31/2029
- Asking \$20.00/SF NNN
- Well positioned Stand-Alone retail building at Jungermann Rd. & 364/Page Extension
- Shadow anchored by Walmart Supercenter
- Excellent access from both Jungermann Rd. and St Peters Parkway
- City of St Peters C-3 Zoning

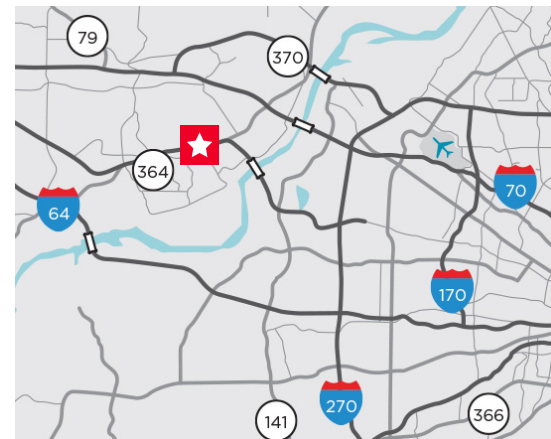
Demographics

	1 Mile	3 Miles	5 Miles
Population	10,942	86,735	162,577
Households	4,494	33,842	65,199
Average HH Income	\$100,139	\$119,899	\$112,812

Traffic Counts

Jungermann Road - 19,012 VPD

364/Page at Jungermann Road - 20,870 VPD



David Wirth

+1 314 925 2916
david.wirth@cushwake.com

Kyle Pershing

+1 314 236 5471
kyle.pershing@cushwake.com

7700 Forsyth Blvd, Suite 1210
St. Louis, Missouri
main +1 314 862 7100
cushmanwakefield.com



For Sublease
1615 Jungermann Road
Saint Peters, Missouri 63304

Property Photos





For Sublease
1615 Jungermann Road
Saint Peters, Missouri 63304

Property Photos

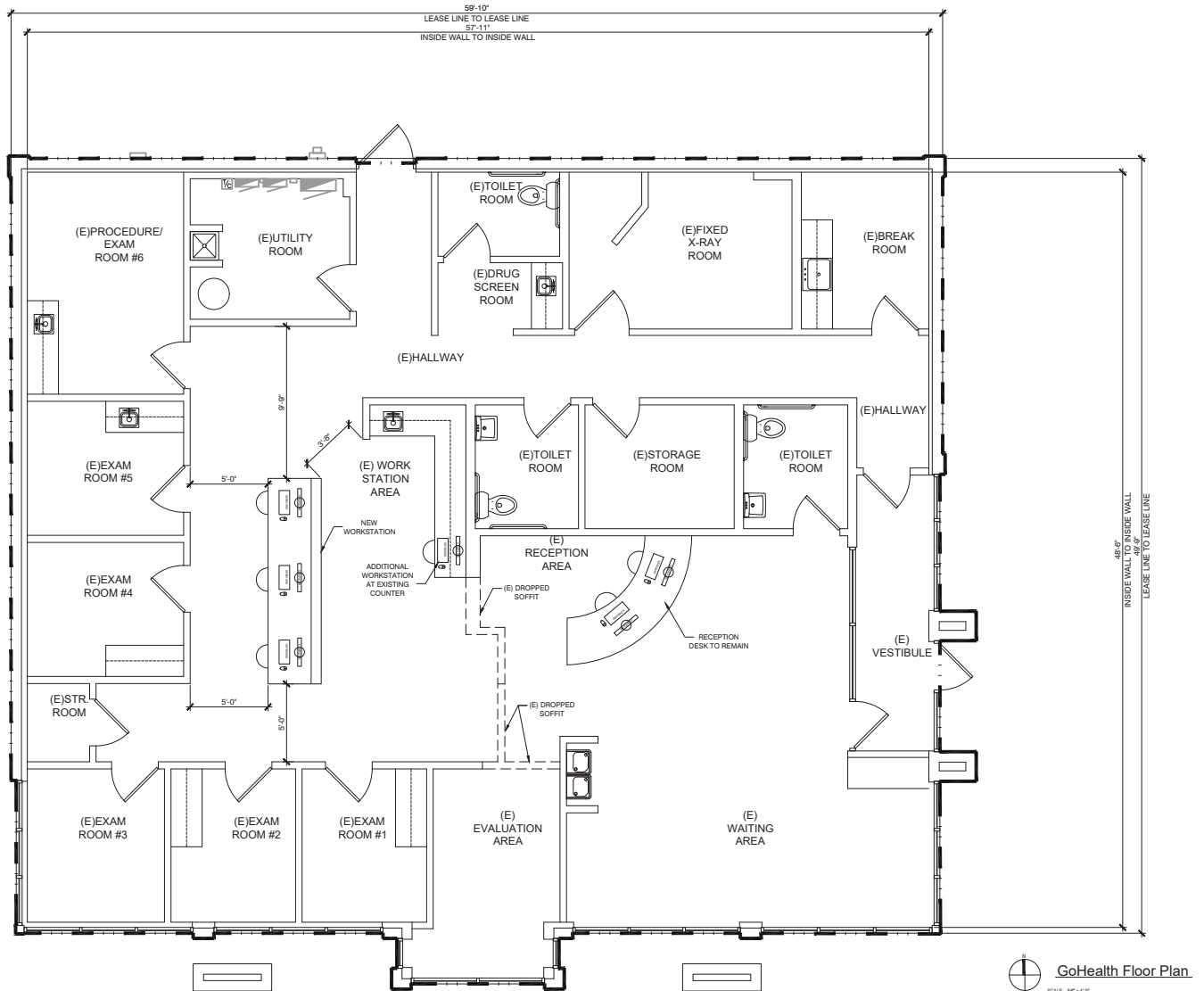


David Wirth
+1 314 925 2916
david.wirth@cushwake.com

Kyle Pershing
+1 314 236 5471
kyle.pershing@cushwake.com

7700 Forsyth Blvd, Suite 1210
St. Louis, Missouri
main +1 314 862 7100
cushmanwakefield.com

Floor Plan



David Wirth
+1 314 925 2916
david.wirth@cushwake.com

Kyle Pershing
+1 314 236 5471
kyle.pershing@cushwake.com

7700 Forsyth Blvd, Suite 1210
St. Louis, Missouri
main +1 314 862 7100
cushmanwakefield.com

Trade Aerial



David Wirth
+1 314 925 2916
david.wirth@cushwake.com

Kyle Pershing
+1 314 236 5471
kyle.pershing@cushwake.com

7700 Forsyth Blvd, Suite 1210
St. Louis, Missouri
main +1 314 862 7100
cushmanwakefield.com