



CLARION PARTNERS

For Lease

Corporate Lakes

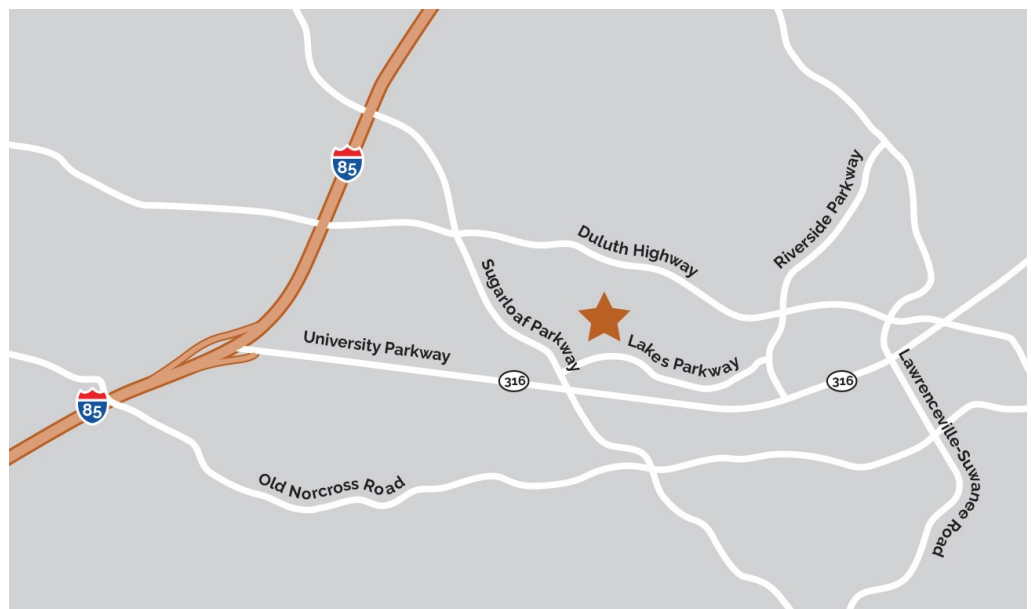
1675 Lakes Parkway, Suite 101A
Lawrenceville, GA 30043

16,768 Square Feet Available



BUILDING HIGHLIGHTS

- 16,768 SF available
- 8,244 SF office
- 20' clear height
- Wet sprinkler system
- 3 dock doors
- 2 drive-in door
- Rear load configuration
- 35' x 40' column spacing



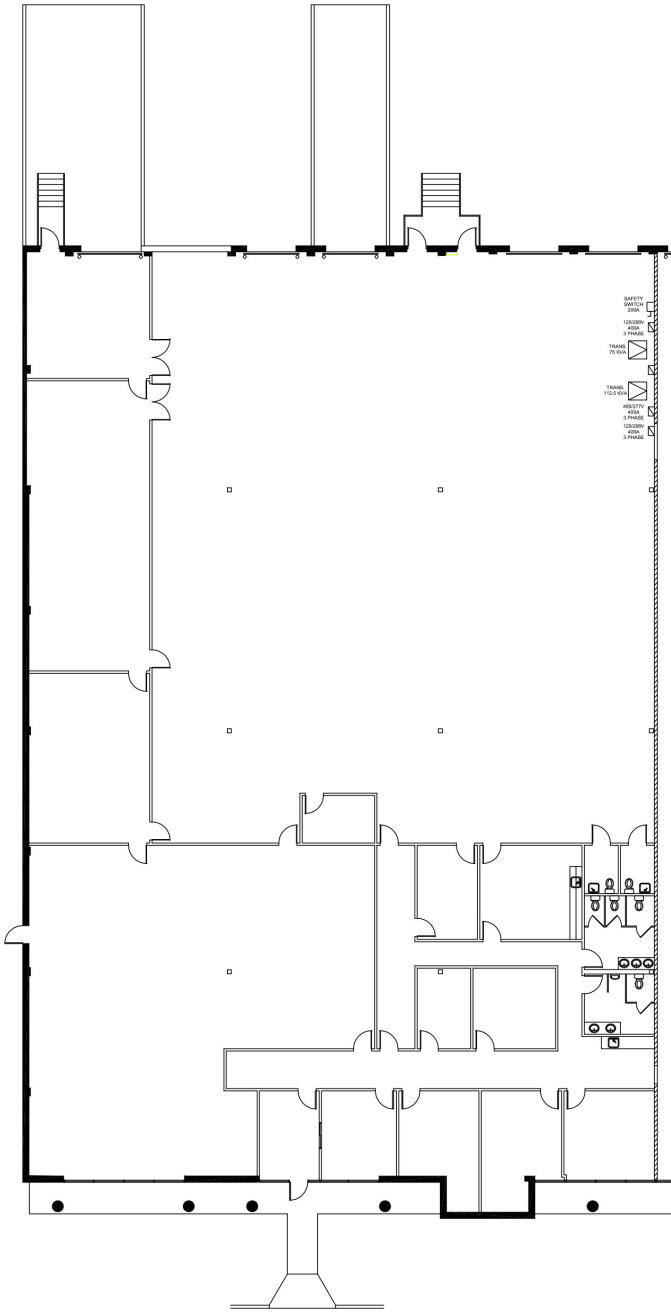
SEEFRIED PROPERTIES, INC.

This information contained herein was obtained from sources deemed reliable and is believed to be true. It has not been verified and as such, cannot be warranted nor form any part of any future contract.



CLARION PARTNERS

Corporate Lakes



CLARION PARTNERS

www.clarionpartners.com

Corporate Lakes is home to nearly 240k SF of timeless brick constructed buildings, with dock-high served suites able to accommodate a wide range of size and configurations. Offering tremendous access to I-85 directly via Sugarloaf Parkway or via GA-316, Corporate Lakes is well located to meet the needs of many users.

For more information on this opportunity, please contact



SEEFRIED PROPERTIES, INC.

Joseph Kriss
678.904.1910
josephk@seefriedproperties.com

Doug Smith
678.904.1919
dougs@seefriedproperties.com

Tripp Ausband
770.825.3391
tausband@seefriedproperties.com