

T|BA

THE BROKERAGE ADVISORS
COMMERCIAL REAL ESTATE

SUBLEASE AVAILABLE

1900 PEARL

TI Available

1900 N. Pearl Street
Suites: 150 & 1720

Approximately 7,063 sq. ft.

*Sub-Lessor will consider leasing
suites separately

Explore our sublease opportunities at 1900 Pearl — one of Dallas' newest landmarks in the Central Business District. The new development is located in the Arts District across from Klyde Warren Park. It is also just a short walk away from the Theater District and the Annette Strauss Pavilion.

Matt Albritton

Director

☎ (214) 708-4432

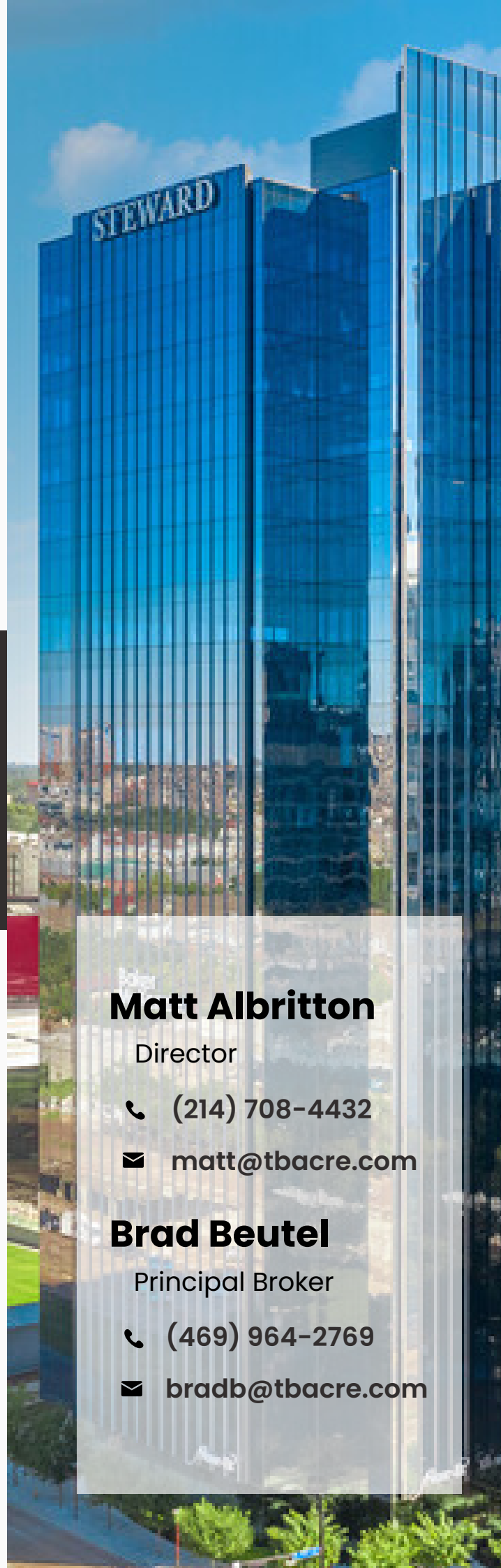
✉ matt@tbacre.com

Brad Beutel

Principal Broker

☎ (469) 964-2769

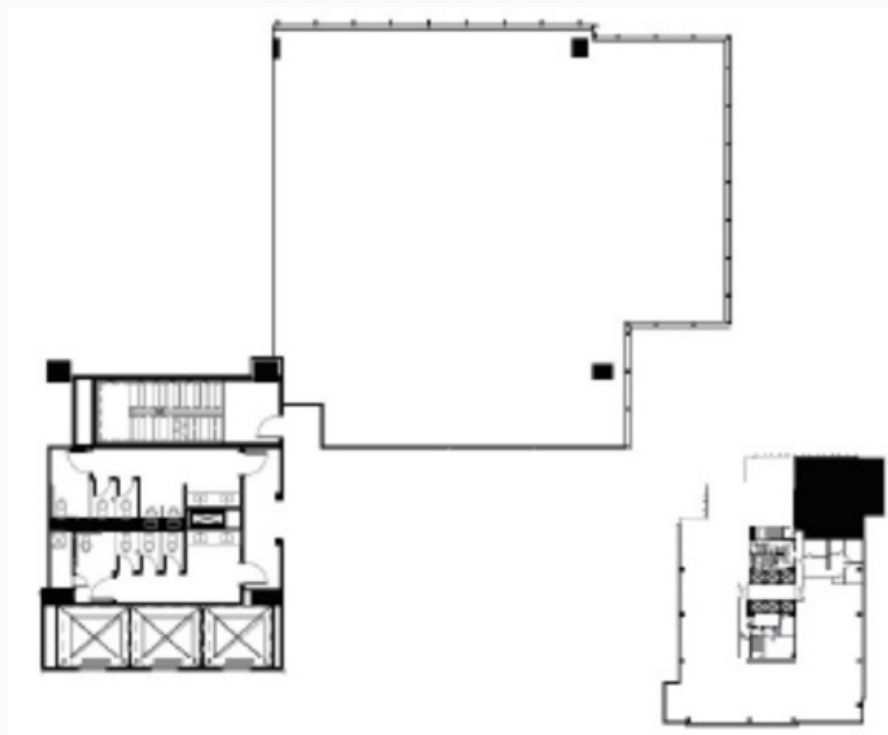
✉ bradb@tbacre.com



FOR SUBLEASE

1900 N. Pearl St.
Suite 150 & 1720 - Dallas, Texas 75201

Suite 1720 - 3,732 SF



Matt Albritton

☎ (214) 708-4432

✉ matt@tbacre.com

Brad Beutel

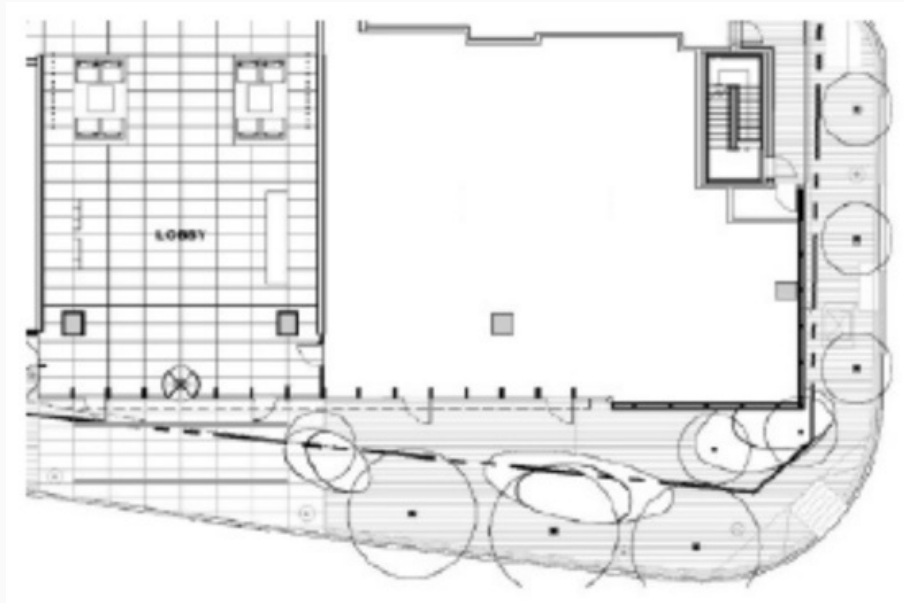
☎ (469) 964-2769

✉ brad@tbacre.com

FOR SUBLEASE

1900 N. Pearl St.
Suite 150 & 1720 - Dallas, Texas 75201

Suite 150 - 3,331 SF



Matt Albritton

☎ (214) 708-4432

✉ matt@tbacre.com

Brad Beutel

☎ (469) 964-2769

✉ brad@tbacre.com

FEATURES



5 min walk to DART line



10 minutes to Love Field

Space Details:

- Suite 1720 - \$28.00/PSF NNN
- Suite 150 - \$35.00/PSF NNN
- Available immediately
- 3.00/1,000 RSF parking ratio
- TI Available

Approximately 10,829 sq. ft. comprising:

Suite 150 - 3,331 sq. ft. SHELL

Suite 1720 - 3,732 sq. ft. SHELL

7yr Sublease exp. December 1st 2030

Restaurants Nearby:

- Del Frisco's
- Perry's Steakhouse
- Sixty Vines
- Moxie's
- Starbucks
- Shake Shack
- Kotta Sushi
- The Rustic
- East Hampton
- Happiest Hour
- The Henry
- North Italia

Matt Albritton

☎ (214) 708-4432

✉ matt@tbacre.com

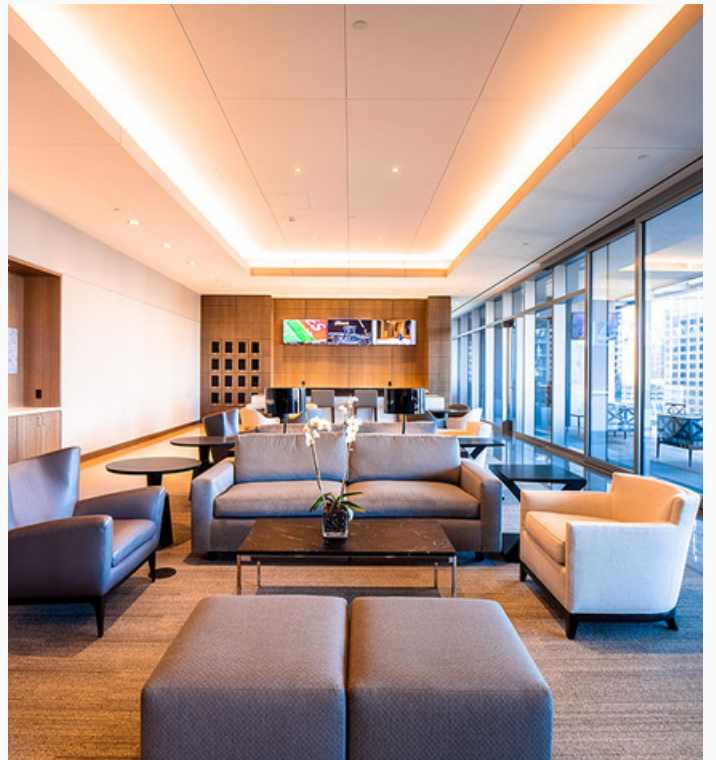
Brad Beutel

☎ (469) 964-2769

✉ brad@tbacre.com

FOR SUBLEASE

1900 N. Pearl St.
Suite 150 & 1720 - Dallas, Texas 75201



Matt Albritton

☎ (214) 708-4432

✉ matt@tbacre.com

Brad Beutel

☎ (469) 964-2769

✉ brad@tbacre.com