

# AMERICAN LEGION BUILDING SPACE FOR LEASE

**BAUER**  
& ASSOCIATES  
REALTORS®



**816-822 EAST 6TH STREET – TULSA, OK**

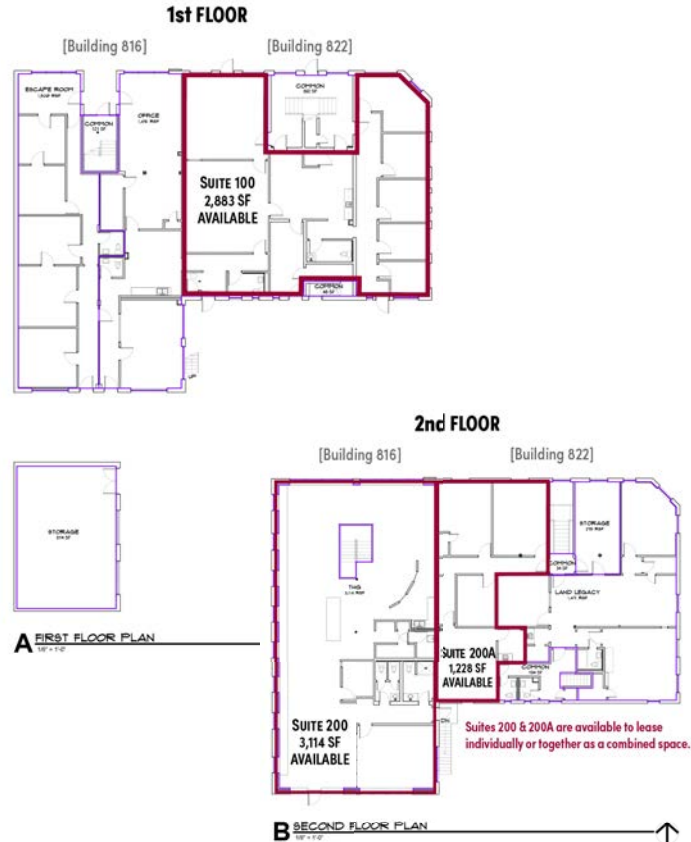
## PROPERTY HIGHLIGHTS

- **AVAILABLE: SUITE 822-100 (2,883 SF)**
- **AVAILABLE: SUITE 822-200A (1,228 SF)**
- **AVAILABLE: SUITE 816-200 (3,114 SF)**

*SUITES 816-200 & 822-200A MAY BE LEASED SEPARATELY  
OR TOGETHER FOR FLEXIBLE SPACE OPTIONS.*

- **FULL SERVICE LEASES**
- **FREE ON-SITE PARKING**
- **DYNAMIC LOCATION IN THE CENTRAL BUSINESS DISTRICT**
- **CLOSE PROXIMITY TO RESTAURANTS AND ENTERTAINMENT**

 **DOUG BAUER, CCIM**  
Office: 918-665-1210



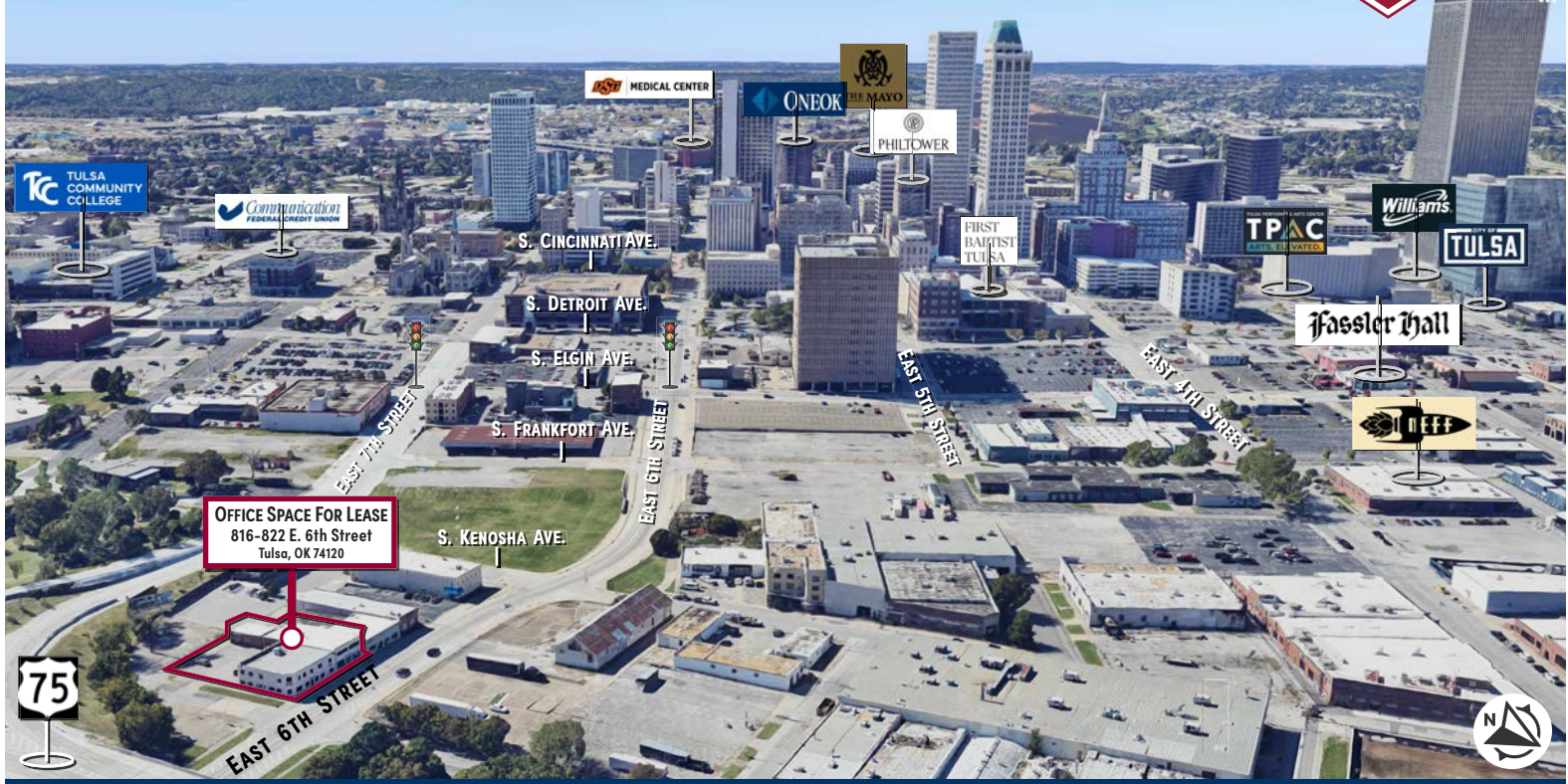
**BAUER & ASSOCIATES, REALTORS®**  
“A LEADER IN TULSA COMMERCIAL REAL ESTATE SINCE 1979”  
Commercial - Industrial - Investment Property - Property Management

6846 S. Canton Ave., Suite 100, Tulsa, OK 74136  
All statements herein are for information purposes only and are believed to be reliable; however, no warranty or representation is made as to the accuracy thereof and the same is submitted subject to errors, omissions, change of price, terms, conditions and prior sale or lease.

Office 918-665-1210  
Fax 918-665-6462  
[www.bauertulsa.com](http://www.bauertulsa.com)



# AMERICAN LEGION BUILDING SPACE FOR LEASE



816-822 E. 6th St. - Tulsa, OK



Downtown Tulsa Area Map



3,640 Vehicles per day - E. 6th Street  
21,433 Vehicles per day - Highway 75

TRAFFIC COUNT - SOURCE INCOG 2024

- HOME DEPOT
- TULSA COMMUNITY COLLEGE
- BRAMBLE BREAKFAST & BAR
- THE VAULT
- FASSLER HALL
- DILLY DINER
- VETERANS PARK
- BOHEMIAN PIZZERIA
- JUNE'S DONUTS & CAFE



**BAUER & ASSOCIATES, REALTORS®**  
"A LEADER IN TULSA COMMERCIAL REAL ESTATE SINCE 1979"  
Commercial - Industrial - Investment Property - Property Management

6846 S. Canton Ave., Suite 100, Tulsa, OK 74136  
All statements herein are for information purposes only and are believed to be reliable; however, no warranty or representation is made as to the accuracy thereof and the same is submitted subject to errors, omissions, change of price, terms, conditions and prior sale or lease.

**DOUG BAUER, CCIM**  
Office: 918-665-1210  
www.bauertulsa.com

# AMERICAN LEGION BUILDING

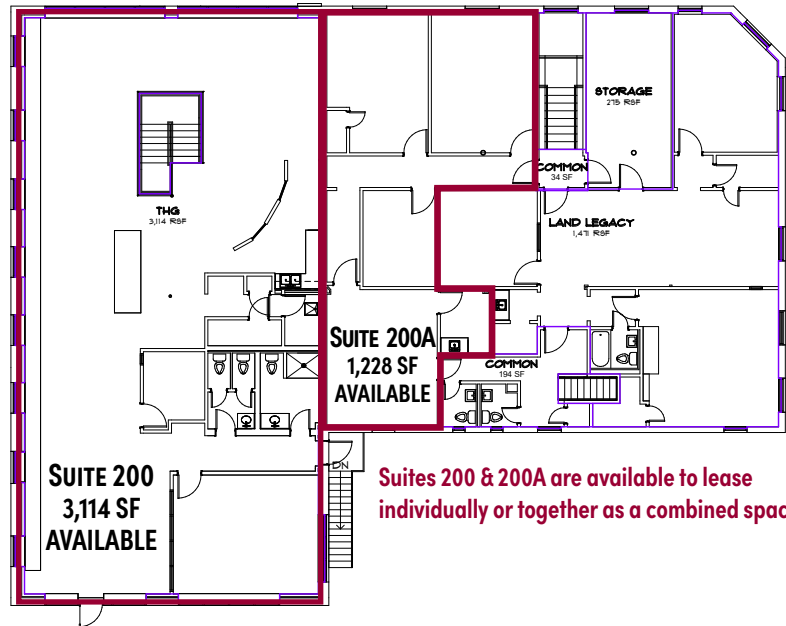
816-822 E. 6th Street - Tulsa, OK 74120



## 2nd FLOOR

[Building 816]

[Building 822]



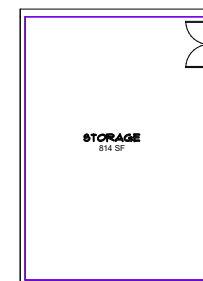
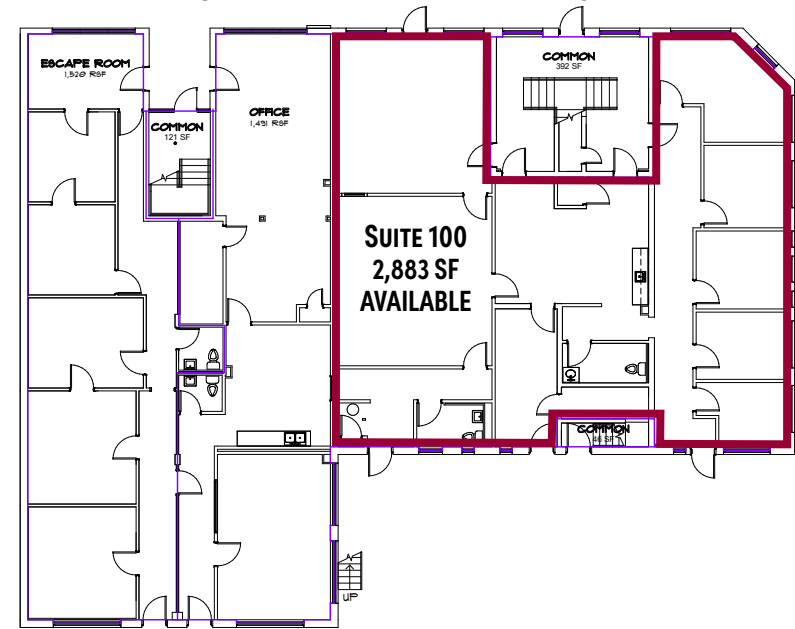
**B SECOND FLOOR PLAN**  
1/8" = 1'-0"



## 1st FLOOR

[Building 816]

[Building 822]



**A FIRST FLOOR PLAN**  
1/8" = 1'-0"



## BAUER & ASSOCIATES, REALTORS

"A LEADER IN TULSA COMMERCIAL REAL ESTATE SINCE 1979"  
Commercial - Industrial - Investment Property - Property Management

Office 918.665.1210 | Fax 918.665.6462 | [www.bauertulsa.com](http://www.bauertulsa.com)  
6846 S. Canton Ave., Suite 100, Tulsa, OK 74136

All statements herein are for information purposes only and are believed to be reliable; however, no warranty or representation is made as to the accuracy thereof and the same is submitted subject to errors, omissions, change of price, terms, conditions and prior sale or lease.

10/27/25