



# INDUSTRIAL / WAREHOUSE AVAILABLE

## 141 DALEY ROAD, POUGHKEEPSIE, NY 12603



### OFFICE, SHOP, SERVICE - RECEPTION / OFFICES / GARAGE

**ADDRESS:** 141 Daley Road  
Poughkeepsie, NY 12603

**LOCATION:** NYS RT 376, New Hackensack  
(2 Minutes / 1 Mile)  
**Dutchess County Airport**  
(5 Minutes / 2.7 Miles)  
**Poughkeepsie Metro-North** (Hudson Line)  
(15 Minutes / 8.7 Miles)

**BUILDING INFO:** Reception Area, Showroom  
2 Private Offices  
(additional office on 2nd floor)  
2 Bay Garage

**BUILDING SIZE:** 2,520 SF

**ASKING PRICE:** Lease: \$4,500 Per Month



#### PROPERTY OVERVIEW

CR Properties Group is pleased to offer a Office / Warehouse Building For Lease on 141 Daley Road, Poughkeepsie, NY 12603. 2 Minutes from NYS Route 376, 5 Minutes from the Dutchess County Airport, and 15 Minutes from Poughkeepsie Metro-North Train Station (Hudson Line). There is a reception area, showroom, 2 private offices (additional office on 2nd floor), and a 2 bay garage. This space is 2,520 SF and set up for a Office / Shop / Service companies within a prominent area of Dutchess County. 1 Hour & 40 Minutes to Grand Central Terminal.



CR Properties Group, LLC  
295 Main Street  
Poughkeepsie, NY 12601  
[www.crproperties.com](http://www.crproperties.com)



ALL DATA BELIEVED TO BE ACCURATE BUT NOT WARRANTED

*For more information:*

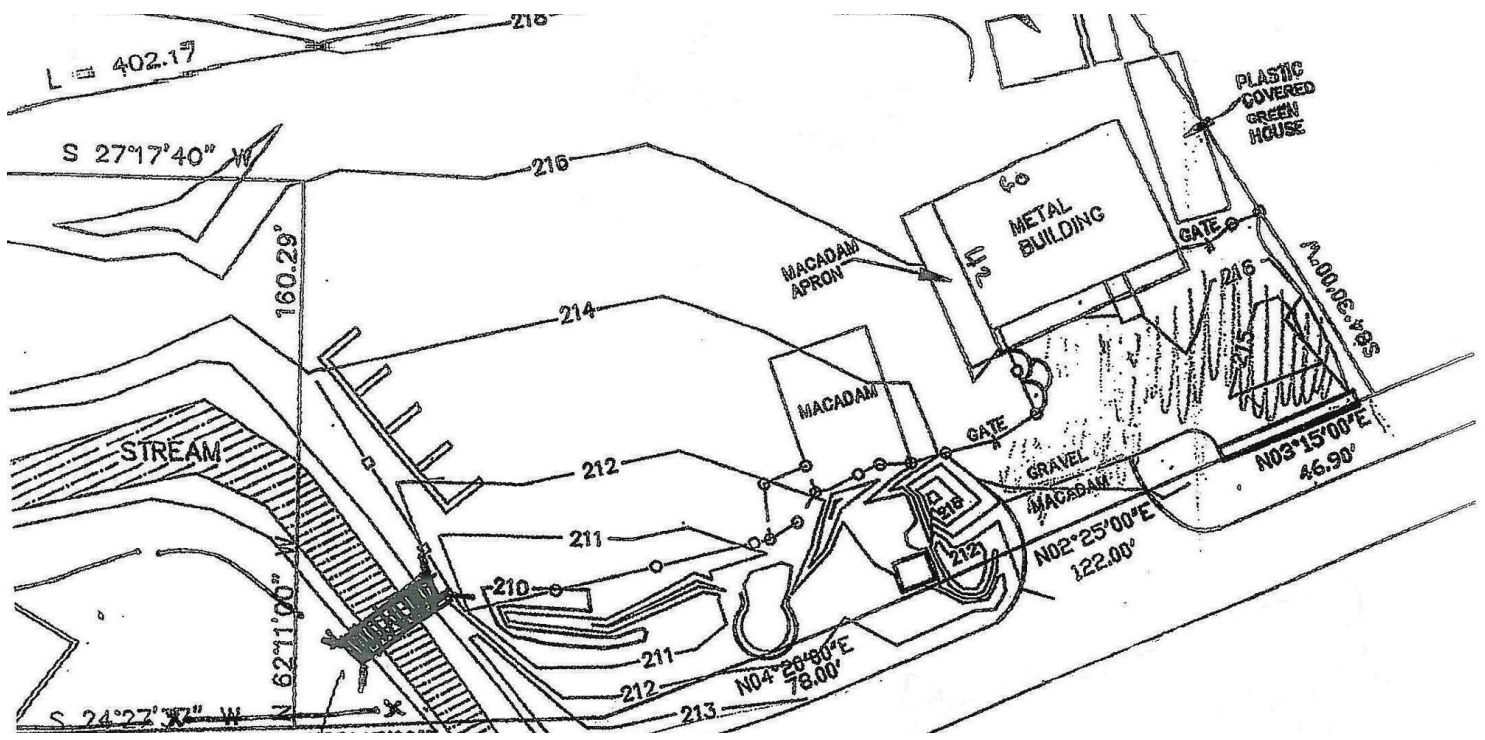
**Thomas M. Cervone**  
845.485.3100  
[tom@crproperties.com](mailto:tom@crproperties.com)



# RECEPTION & SURVEY MAP

141 DALEY ROAD, POUGHKEEPSIE, NY 12603

2 PRIVATE OFFICES, SHOWROOM, 2 BAY GARAGE



CR Properties Group, LLC  
295 Main Street  
Poughkeepsie, NY 12601  
www.crproperties.com



ALL DATA BELIEVED TO BE ACCURATE BUT NOT WARRANTED

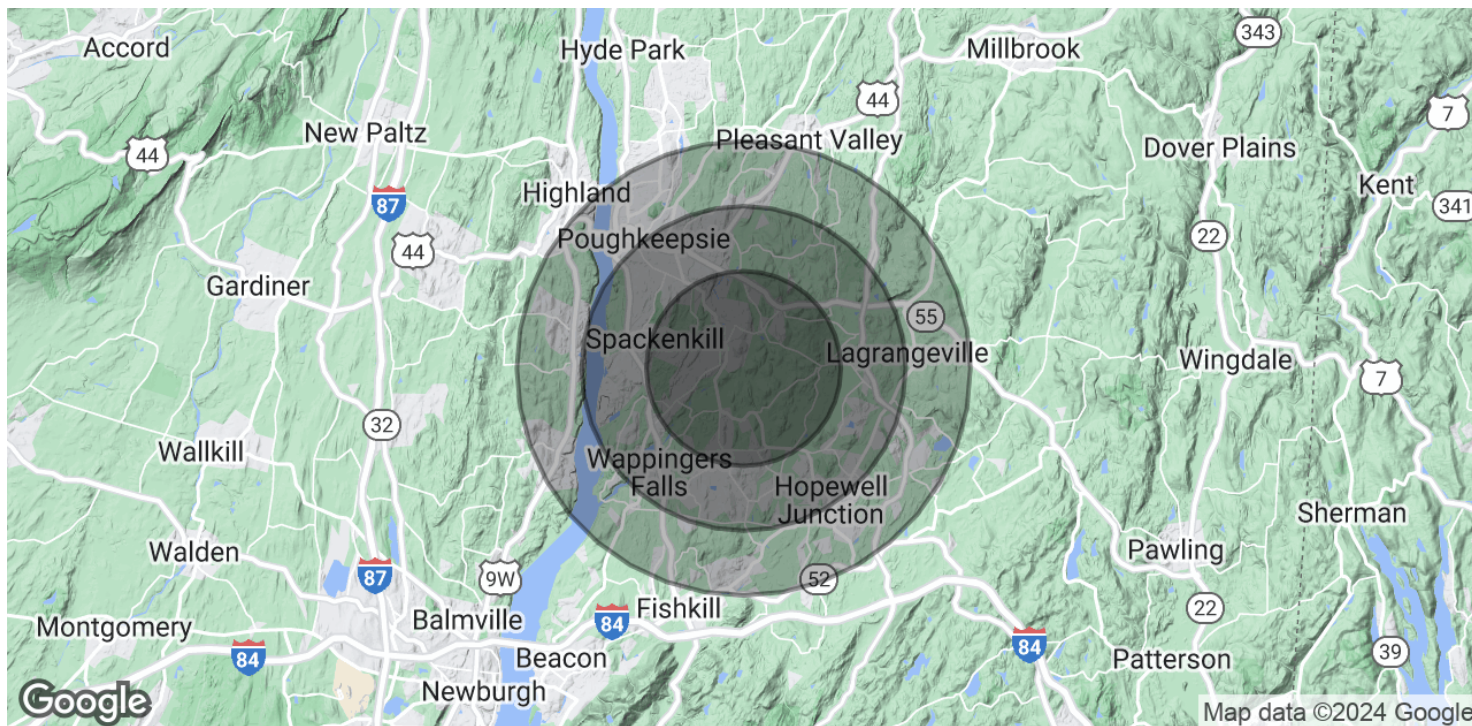
For more information:  
Thomas M. Cervone  
845.485.3100  
tom@crproperties.com



# DEMOGRAPHICS & STATISTICS

## POPULATION, HOUSEHOLD & INCOME

### DUTCHESS COUNTY & ULSTER COUNTY AREA



#### POPULATION

|                      | 3 MILES | 5 MILES | 7 MILES |
|----------------------|---------|---------|---------|
| Total Population     | 23,655  | 85,916  | 147,152 |
| Average Age          | 46.5    | 44.4    | 42.3    |
| Average Age (Male)   | 44.7    | 43.0    | 41.1    |
| Average Age (Female) | 48.2    | 45.6    | 43.4    |

#### HOUSEHOLDS & INCOME

|                     | 3 MILES   | 5 MILES   | 7 MILES   |
|---------------------|-----------|-----------|-----------|
| Total Households    | 9,020     | 34,099    | 59,566    |
| # of Persons per HH | 2.6       | 2.5       | 2.5       |
| Average HH Income   | \$125,291 | \$112,165 | \$101,053 |
| Average House Value | \$353,443 | \$279,734 | \$259,471 |

\* Demographic data derived from 2020 ACS - US Census



CR Properties Group, LLC  
295 Main Street  
Poughkeepsie, NY 12601  
[www.crproperties.com](http://www.crproperties.com)



ALL DATA BELIEVED TO BE ACCURATE BUT NOT WARRANTED

For more information:

Thomas M. Cervone  
845.485.3100  
[tom@crproperties.com](mailto:tom@crproperties.com)