



**LEASE
OPPORTUNITY
AVAILABLE**

1100 West Central Road
Arlington Heights, Illinois 60005

One Oakbrook Terrace
Suite 400
Oakbrook Terrace, Illinois 60181
+1 630 932 1234

hiffman.com

PROPERTY HIGHLIGHTS

The Arlington Heights Medical Center is a 62,808 SF medical office building located immediately adjacent to Northwest Community Hospital part of NorthShore Health System.



MEDICAL OFFICE
SUITES AVAILABLE



SPEC SUITE
PROGRAM IS
UNDERWAY

Contact

Jason Wurtz
+1 630 693 0692
jwurtz@hiffman.com

Steve Chrastka
+1 630 317 0746
schrastka@hiffman.com



PARKING RATIO OF
4.01/1,000 SF



1 MILE FROM FULL
I-90 INTERCHANGE



ON-SITE
MANAGEMENT
SERVICES



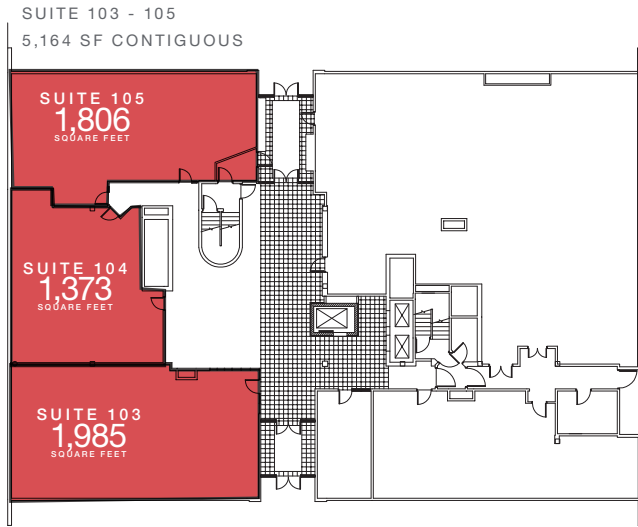
HIGHLY VISIBLE
OFFICE BUILDING ON
CENTRAL AVENUE

NO WARRANTY OR REPRESENTATION, EXPRESS OR IMPLIED, IS MADE AS TO THE ACCURACY OF THE INFORMATION CONTAINED HEREIN, AND THE SAME IS SUBMITTED SUBJECT TO ERRORS, OMISSIONS, CHANGE OF PRICE, RENTAL OR OTHER CONDITIONS, PRIOR SALE, LEASE OR FINANCING, OR WITHDRAWAL WITHOUT NOTICE, AND OF ANY SPECIAL LISTING CONDITIONS IMPOSED BY OUR PRINCIPALS NO WARRANTIES OR REPRESENTATIONS ARE MADE AS TO THE CONDITION OF THE PROPERTY OR ANY HAZARDS CONTAINED THEREIN ARE ANY TO BE IMPLIED.

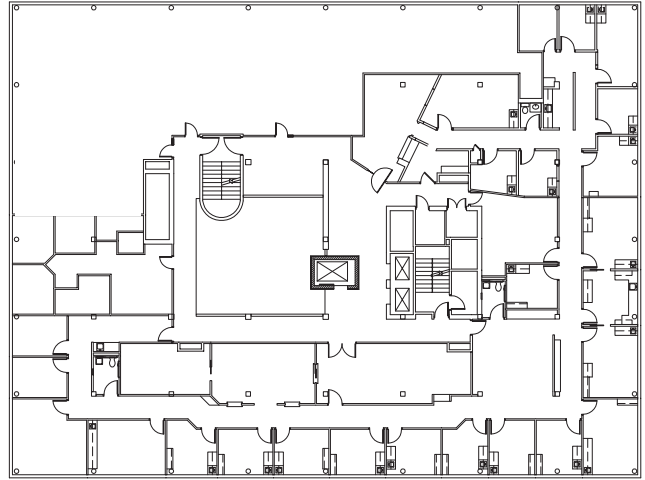


AVAILABLE SPACE

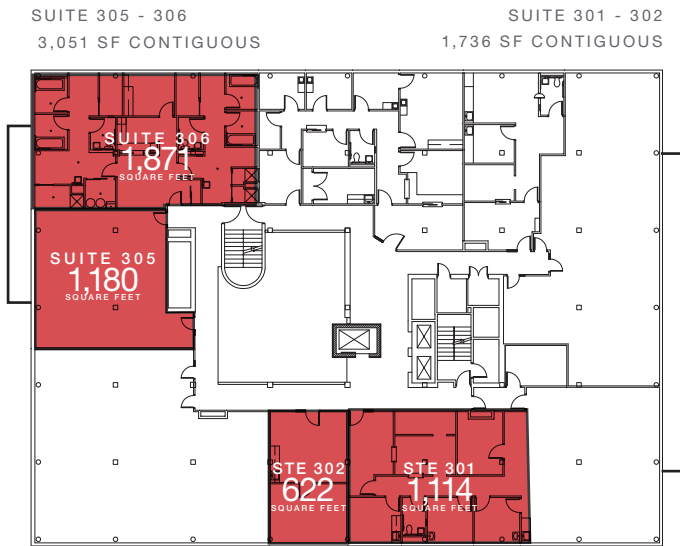
622 - 5,812 SF AVAILABLE



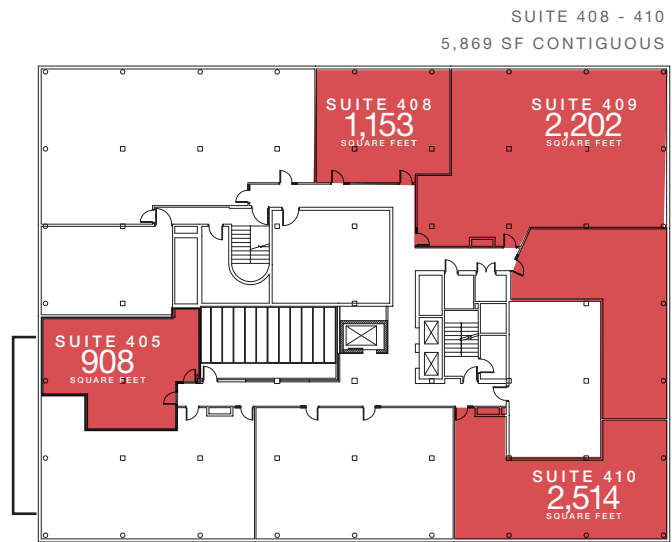
FIRST FLOOR



SECOND FLOOR



THIRD FLOOR



FOURTH FLOOR





LOCATION, LOCATION, LOCATION

Immediately Adjacent to Northwest Community Hospital part of NorthShore Health System.



Contact

Jason Wurtz
+1 630 693 0692
jwurtz@hiffman.com

Steve Chrastka
+1 630 317 0746
schrastka@hiffman.com

NAI Hiffman
Commercial Real Estate Services, Worldwide

HIFFMAN
NATIONAL

One Oakbrook Terrace
Suite 400
Oakbrook Terrace, Illinois 60181
+1 630 932 1234

hiffman.com