

# For Lease



Size: up to 6,748 sf

Smallest divisible: 1,108 sf

Levels: two

Parking: parking lot

Zoning: C-2

Email:  
[yao@ywdevelop.com](mailto:yao@ywdevelop.com)

Mobile: 703-282-8283

2410 Columbia Pike, Arlington, Virginia, 22204



- 15 Surface parking spaces
- Two access points on Columbia Pike and one on Barton Street
- High density neighborhood with thousands of units within 10 minutes' walk
- Café, restaurants, gyms, night clubs nearby

Contact: [yao@ywdevelop.com](mailto:yao@ywdevelop.com) 703-282-8283



# Superb location

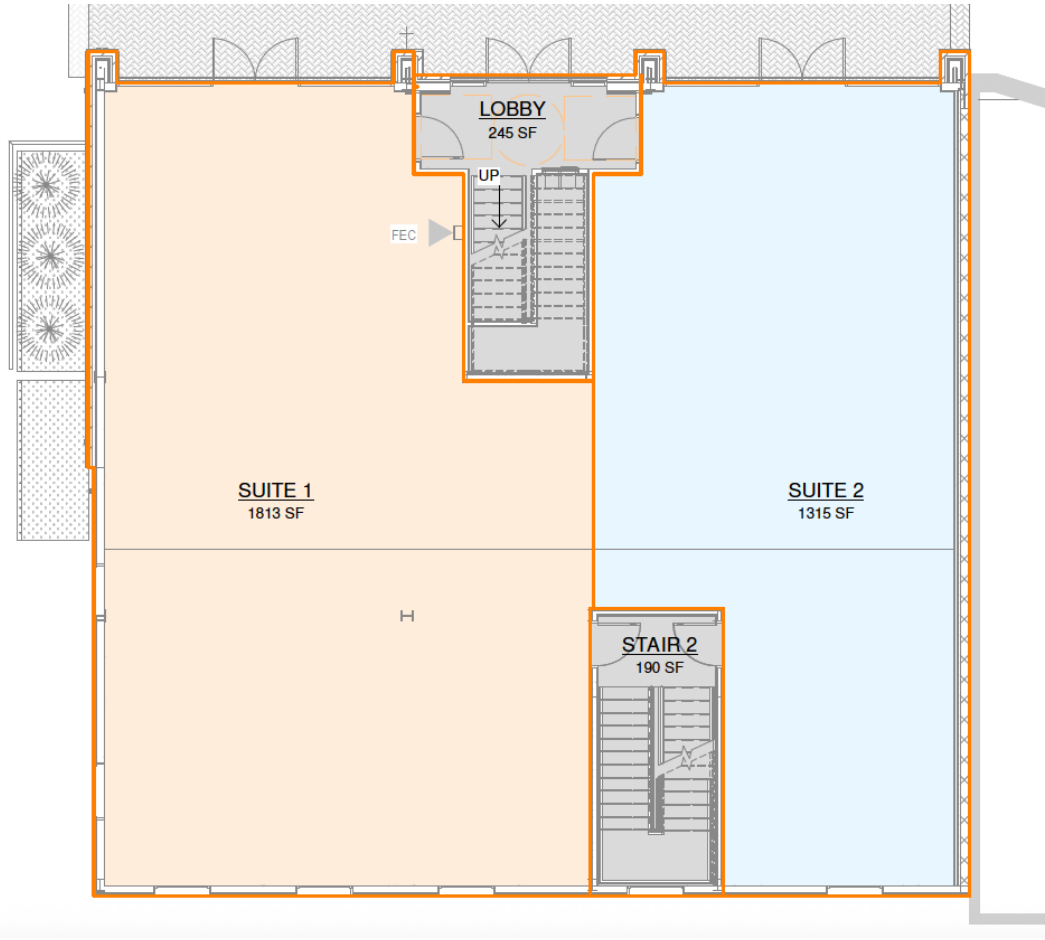


# Flexible floor plan and terms

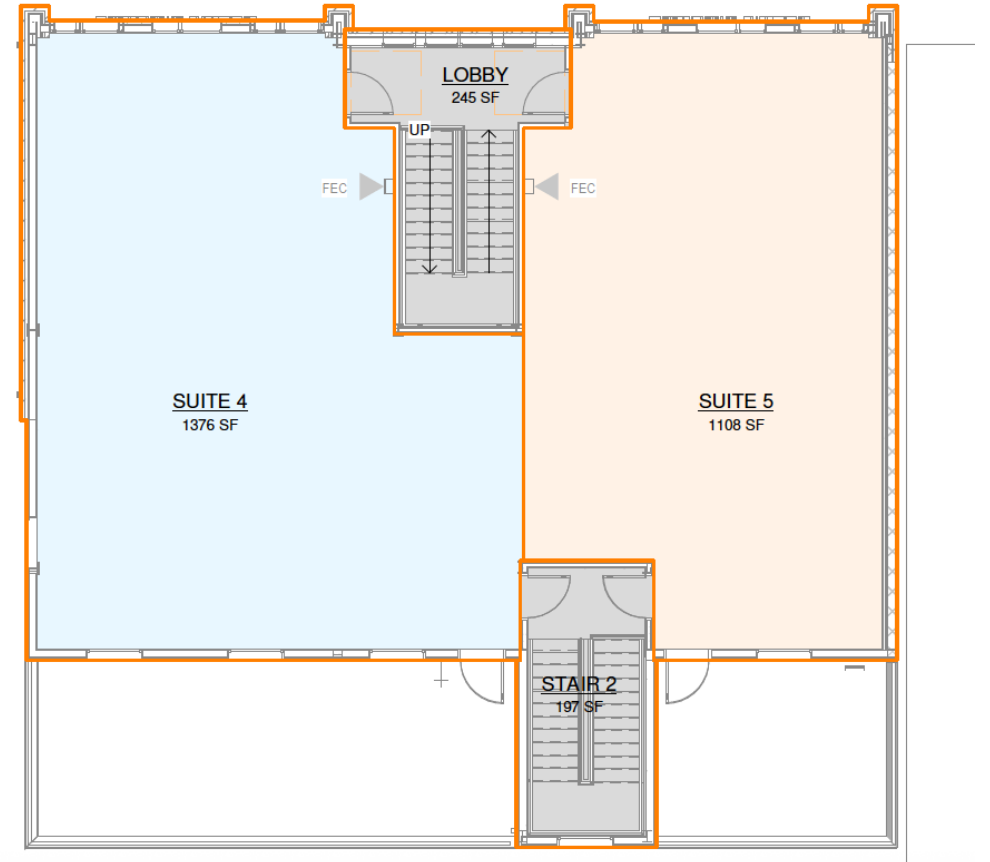
- As small as 1,108 sf
- As large as 6,748 sf for the whole building
- Rents negotiable
- Terms negotiable
- NNN expenses TBD
- Flexible use: medical/dental offices, general retail stores, restaurants, banking branches, service oriented stores, café, ABC stores, etc



# Floor plans



First floor



Second floor