

CLASS-A OFFICE/LAB 2,500A @ 480V

380 LOGUE AVE, MOUNTAIN VIEW, CA



±13,200 SF Class-A Building in Mountain View Available October 1, 2024

2 labs each approximately ±3,000 SF (±6,000 SF total)

2,500A @ 480V power distributed throughout the lab

Former location for EV group

Class A interiors

32 parking spots

Shower

Available October 1, 2024

Call to tour & see pricing (please do not disturb tenant)

JEFF RAMIREZ

408.202.7045

jeff.ramirez@kidder.com

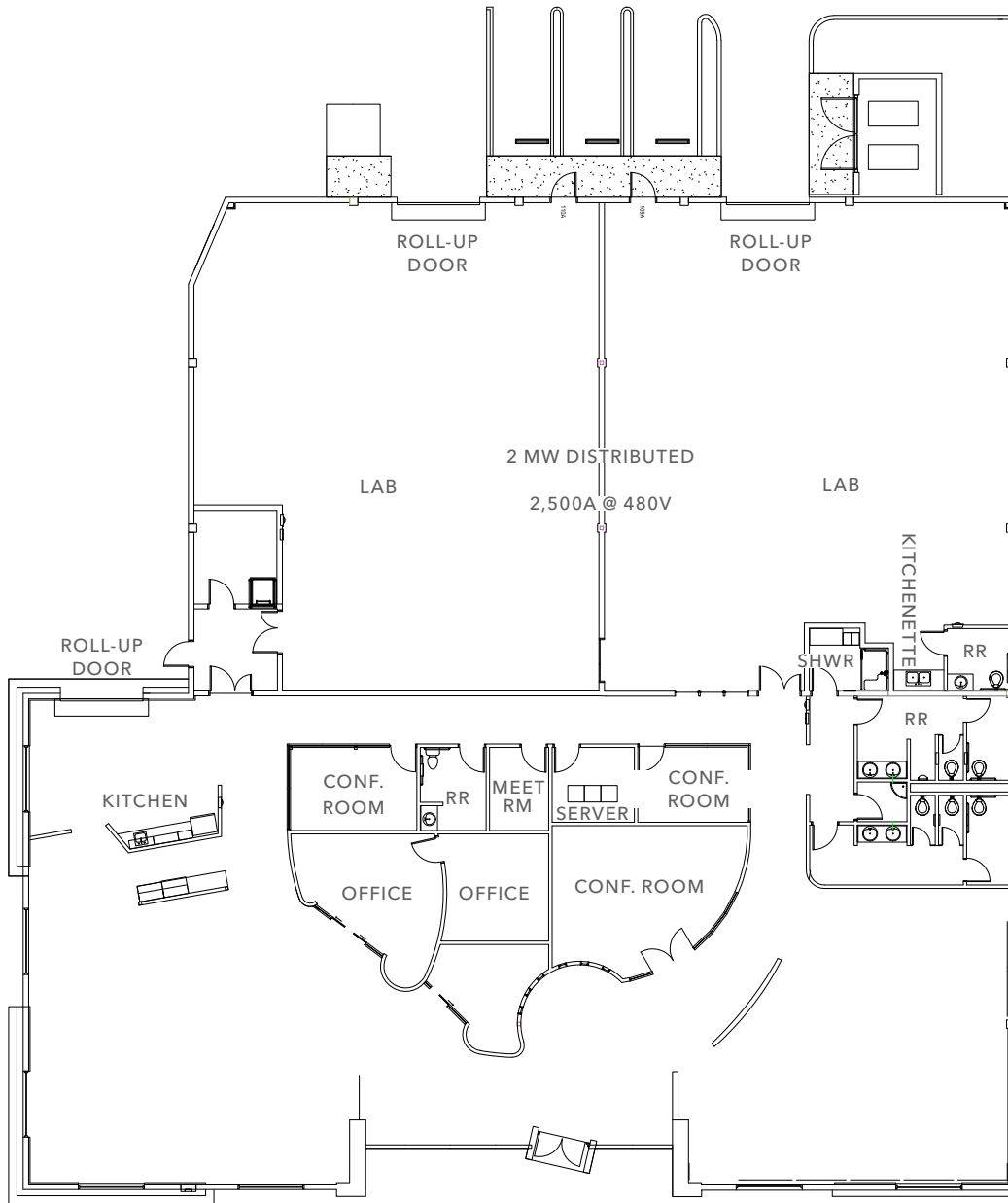
LIC N° 00964359

KIDDER.COM

This information supplied herein is from sources we deem reliable. It is provided without any representation, warranty, or guarantee, expressed or implied as to its accuracy. Prospective Buyer or Tenant should conduct an independent investigation and verification of all matters deemed to be material, including, but not limited to, statements of income and expenses. Consult your attorney, accountant, or other professional advisor.



FLOOR PLAN



±13,200 SF

BUILDING SIZE

±6,000 SF

LAB SPACE AVAILABLE

10/1/24

AVAILABLE

JEFF RAMIREZ | 408.588.2331 | jeff.ramirez@kidder.com | LIC N° 00964359

KIDDER.COM

This information supplied herein is from sources we deem reliable. It is provided without any representation, warranty, or guarantee, expressed or implied as to its accuracy. Prospective Buyer or Tenant should conduct an independent investigation and verification of all matters deemed to be material, including, but not limited to, statements of income and expenses. Consult your attorney, accountant, or other professional advisor.





KIDDER.COM

This information supplied herein is from sources we deem reliable. It is provided without any representation, warranty, or guarantee, expressed or implied as to its accuracy. Prospective Buyer or Tenant should conduct an independent investigation and verification of all matters deemed to be material, including, but not limited to, statements of income and expenses. Consult your attorney, accountant, or other professional advisor.



KIDDER.COM

This information supplied herein is from sources we deem reliable. It is provided without any representation, warranty, or guarantee, expressed or implied as to its accuracy. Prospective Buyer or Tenant should conduct an independent investigation and verification of all matters deemed to be material, including, but not limited to, statements of income and expenses. Consult your attorney, accountant, or other professional advisor.

