

PRICE REDUCED

Colliers

Tollhouse
Land

2351-2371 Tollhouse Rd.
Clovis, California

Land for Sale:

50,132 SF

Available Now

Near Clovis Community
Medical Center



Excellent Access
to Highway 168

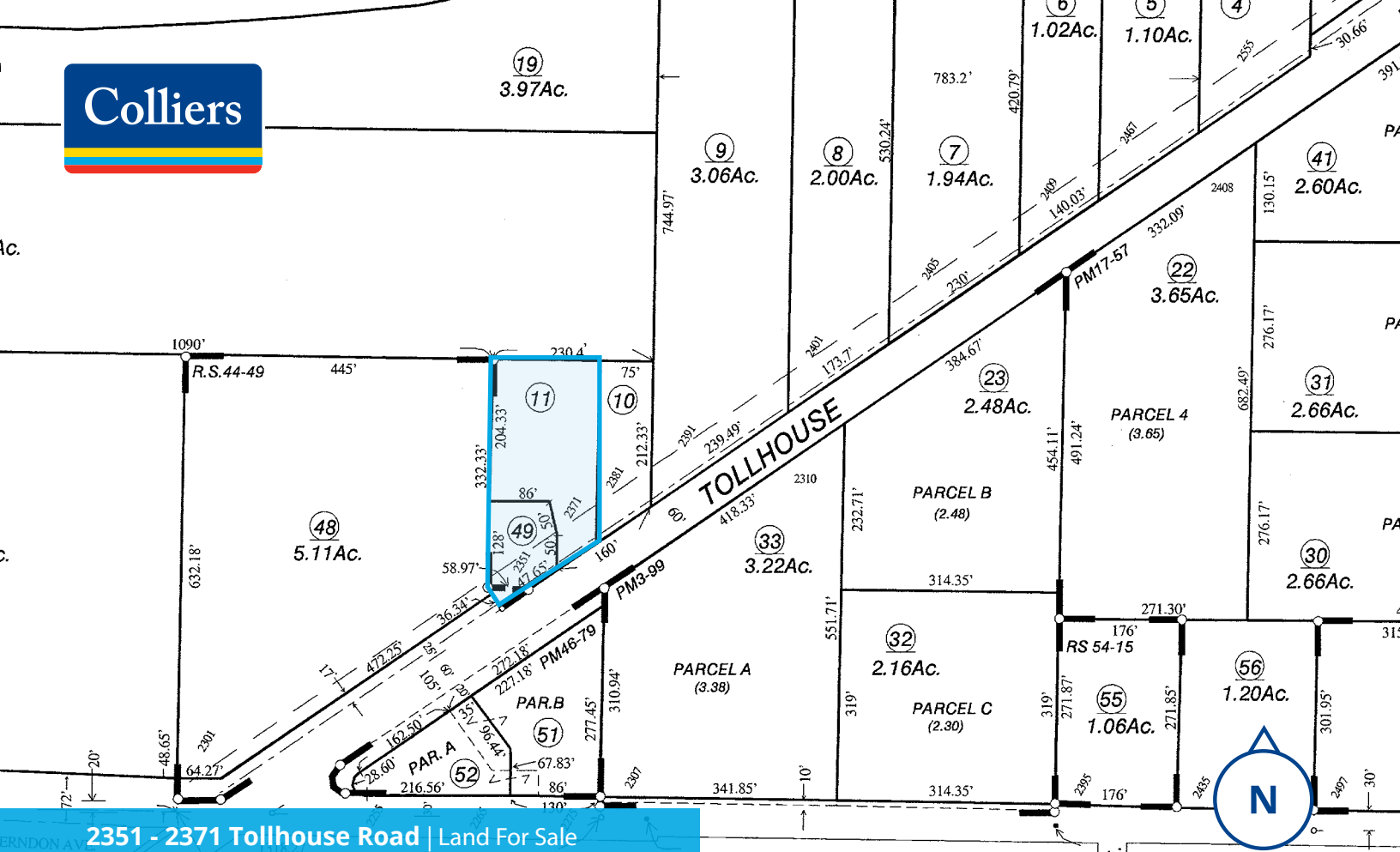


Mixed Use



±1.15 Acres

Accelerating success.



Property Highlights

50,132 sf
Lot size (SF)

1.15 acres
Lot size (Ac)

~~\$1,250,000~~ \$750,000
Purchase Price

Sewer

The existing sewer connection is in Tollhouse Road.

Water

The existing water connection is in Tollhouse Road.

Electricity

Available adjacent to the site.

Zoning

Mixed Use - Allowable uses are Retail, Professional Office, Business Park, Medical Office, High Density Residential, limited Light Industrial. Seller will cooperate to allow time for Buyer to get its use approved.

Buk Wagner ^{SIOR}
559 256 2451
buk.wagner@colliers.com
CA DRE #01296746

Charlie Schuh ^{CCIM}
559 221 7393
charlie.schuh@colliers.com
CA DRE #01992259

Colliers
7485 N. Palm Ave., #110
Fresno, California 93711
559 221 1271

This document/email has been prepared by Colliers for advertising and general information only. Colliers makes no guarantees, representations or warranties of any kind, expressed or implied, regarding the information including, but not limited to, warranties of content, accuracy and reliability. Any interested party should undertake their own inquiries as to the accuracy of the information. Colliers excludes unequivocally all inferred or implied terms, conditions and warranties arising out of this document and excludes all liability for loss and damages arising there from. This publication is the copyrighted property of Colliers and/or its licensors(s). © 2025. All rights reserved. This communication is not intended to cause or induce breach of an existing listing agreement. Colliers Tingey International, Inc.