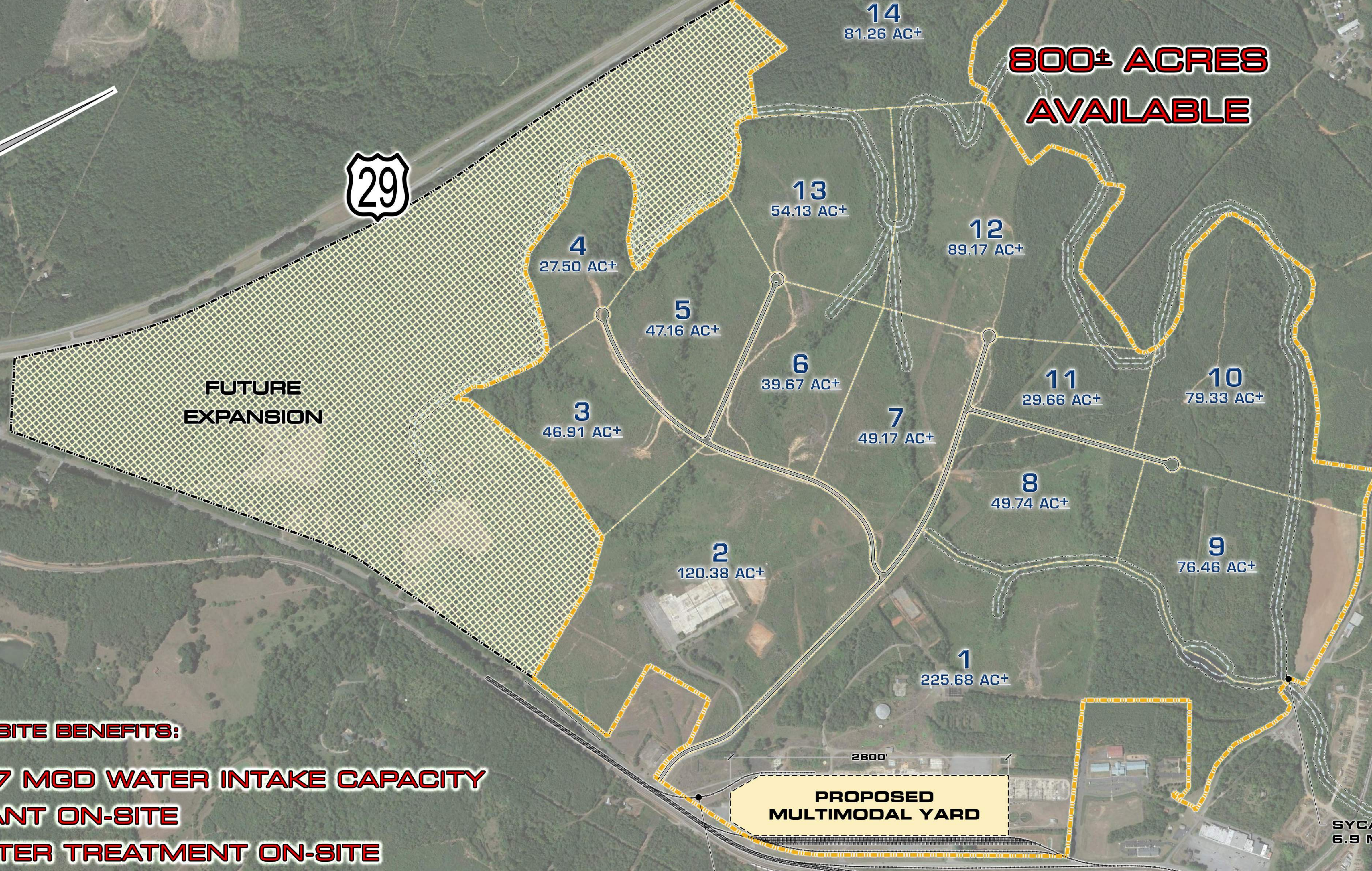




SOUTHERN VIRGINIA MULTIMODAL PARK



**800± ACRES AVAILABLE**



**FUTURE EXPANSION**

**PROPOSED MULTIMODAL YARD**

ROANOKE RIVER INTAKE  
10.8 MGD CAPACITY

SYCAMORE CREEK INTAKE  
6.9 MGD CAPACITY

EXISTING RAIL SPUR

**SITE BENEFITS:**

- UP TO 17.7 MGD WATER INTAKE CAPACITY
- WATER PLANT ON-SITE
- WASTE WATER TREATMENT ON-SITE
- RAIL SERVED SITES AVAILABLE

# SOUTHERN VIRGINIA MULTI-MODAL PARK