



RARE REDEVELOPMENT OPPORTUNITY

±4.15 ACRES, C-3 ZONING

OPPORTUNITY ZONE #0401310720

JEFF HARTLAND

Executive Director

Direct: +1 602 224 4481

Mobile: +1 602 828 4481

jeff.hartland@cushwake.com



GRAND CANYON UNIVERSITY A PHOENIX INSTITUTION SINCE 1951

27TH AVENUE & CAMELBACK



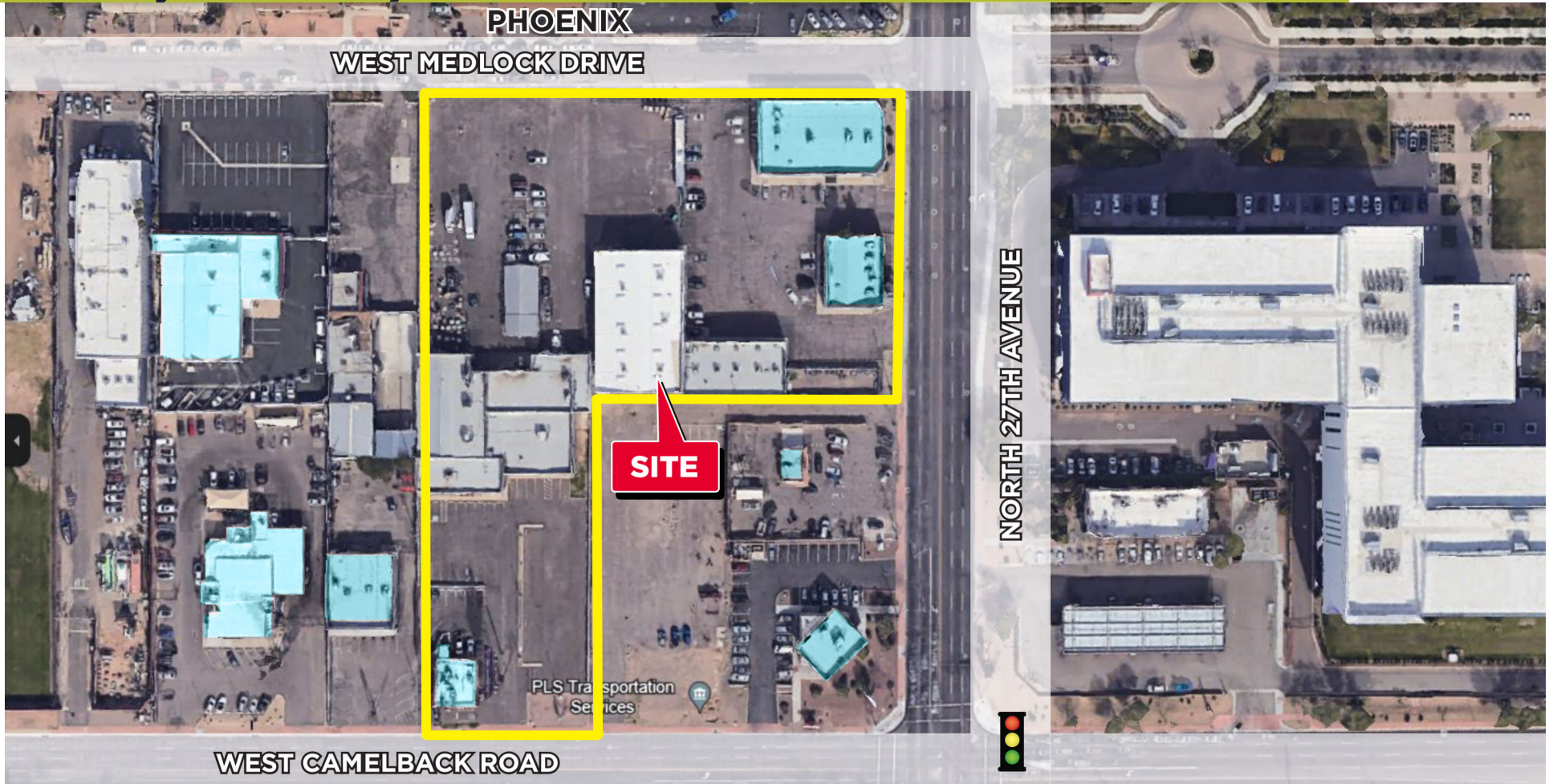
- Over 25,000 on campus students
- GCU has invested over \$1.7 Billion in new infrastructure and technology including a 4 story office complex, hotel, two sports venues and state-of-the-art student housing and academic buildings
- Niche.com ranks GCC as following:

GCU HIGHLIGHTS

- #4 of of 1,363 best college dorms in America
- #15 out of 774 nursing programs
- #20 out of 972 for education programs
- #24 of 1,387 Best College Campuses in America
- #1 Best College Campus in Arizona

MAP

±180,758 SF / ±4.15 ACRES C-3 ZONING



For more information, please contact:

JEFF HARTLAND

Executive Director

Direct: +1 602 224 4481

Mobile: +1 602 828 4481

jeff.hartland@cushwake.com

2555 E Camelback Rd, Ste 400

Phoenix, AZ

+1 602 828 4481

cushmanwakefield.com

