

Warehouse/Shop with Outside Storage

3900 Naturally Fresh Blvd | College Park, GA

7,000 SF ON +/- 4 ACRES OF OUTSIDE STORAGE
(including detention pond)



Contact:

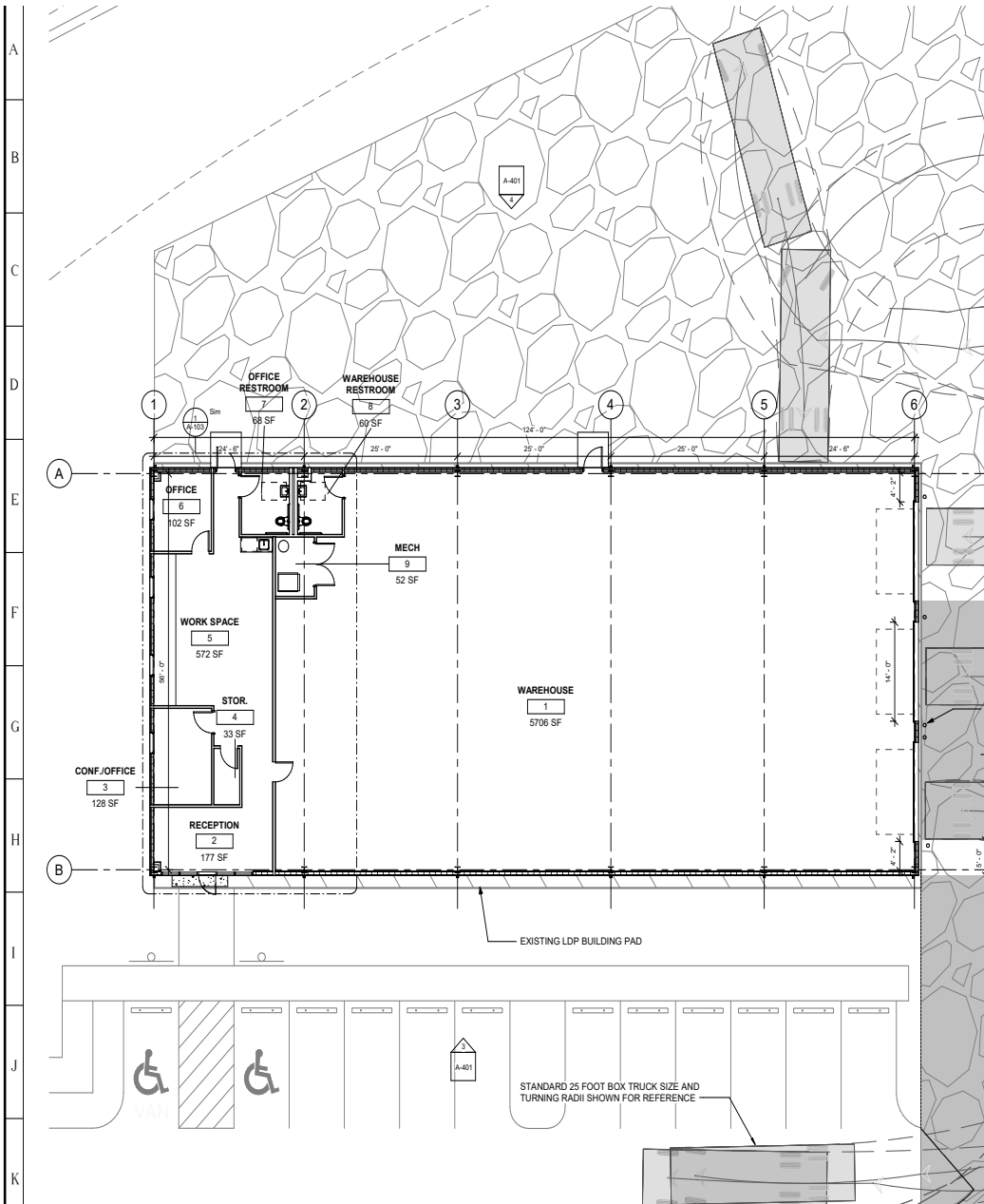
Calvin O’Keeffe

OnPace Partners

+1 404 281 6404

calvin@onpacepartners.com

3900 Naturally Fresh Blvd | College Park, GA
 New Construction



Total SF Available 7,000 SF

Office 1,168 SF

Drive In Doors 3 (14'x16')

Ceiling Height 16' to 20'

Surface Gravel

Atlanta Airport: 7 miles
 CSX Intermodal - Fairburn: 8 miles
 I-285: 2.25 miles





2 miles to I-85



.5 miles to South Fulton Pkwy

8 miles to CSX



7 miles to Airport



2.25 miles to 285



South Fulton Parkway

