

RETAIL PROPERTY FOR LEASE

# Shops at Whispering Pines

7479 NC-22, Carthage, NC 28327



*for more information*

PATRICK MURRAY, CCIM, SIOR

Principal / Broker in Charge

O: 910.829.1617

C: 910.988.5284

patrick@grantmurrayre.com



Grant - Murray  
REAL ESTATE, LLC

COMMERCIAL AND INVESTMENT BROKERAGE

150 N. McPherson Church Rd | Fayetteville, NC 28303 | [www.grantmurrayre.com](http://www.grantmurrayre.com)



## PROPERTY OVERVIEW

<b>Space Available:</b>	Suite E - 1,200 SF Suite H - 1,125 SF
	2009
<b>GLA:</b>	48,802 SF
<b>Zoning:</b>	NS-Whispering Pines
<b>Traffic Count:</b>	8,000 AADT

### property description

The Shops at Whispering Pines, anchored by a high-traffic Food Lion grocery store, boasts a mix of established national tenants in a thriving retail setting. Currently, two spaces remain available: Suite E which is 1,200 SF, and Suite H that is a 1,125 SF endcap with abundant natural light. Monument signage is available to enhance visibility.

This center is conveniently located on Hwy 22 in Carthage, NC, just minutes north of Moore County Airport and surrounded by affluent households. The local area has an average household income of \$131,346 within a three-mile radius, with a population of 12,433. Hwy 22 sees a steady flow of 8,000 vehicles daily, offering excellent exposure.



*for more information*

PATRICK MURRAY, CCIM, SIOR

Principal / Broker in Charge

O: 910.829.1617

C: 910.988.5284

patrick@grantmurrayre.com



**Grant - Murray**

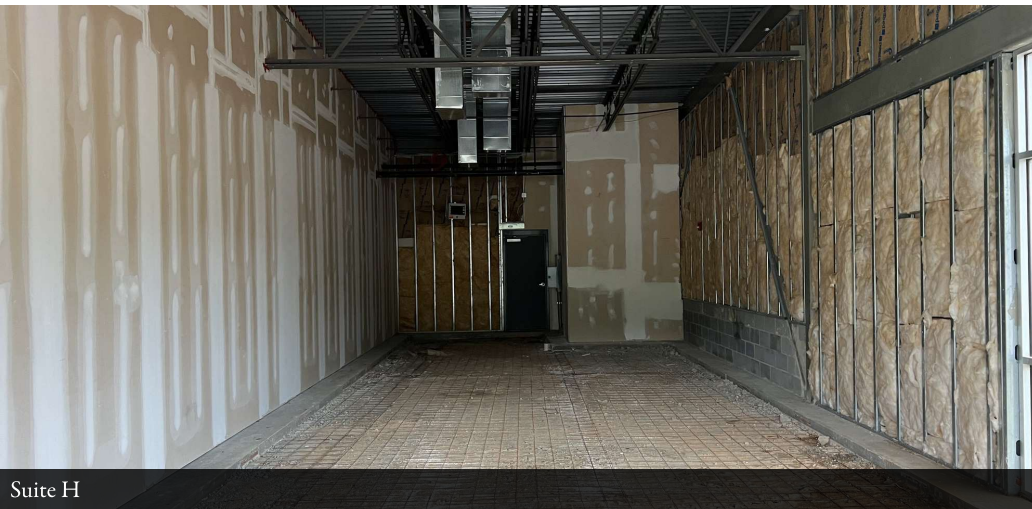
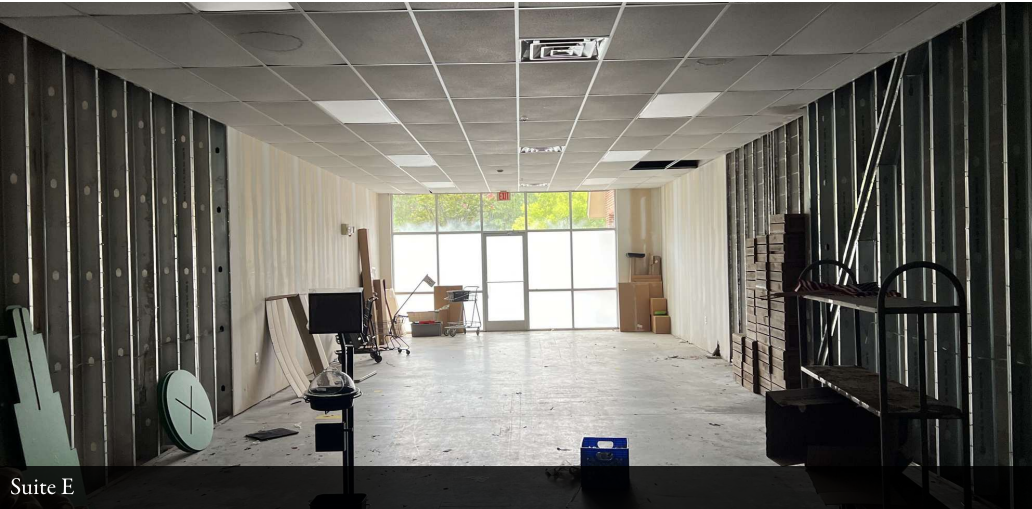
REAL ESTATE, LLC

COMMERCIAL AND INVESTMENT BROKERAGE

150 N. McPherson Church Rd | Fayetteville, NC 28303 | [www.grantmurrayre.com](http://www.grantmurrayre.com)

Shops at Whispering Pines  
7479 NC-22, CARTHAGE, NC 28327

ADDITIONAL PHOTOS



*for more information*

PATRICK MURRAY, CCIM, SIOR

Principal / Broker in Charge

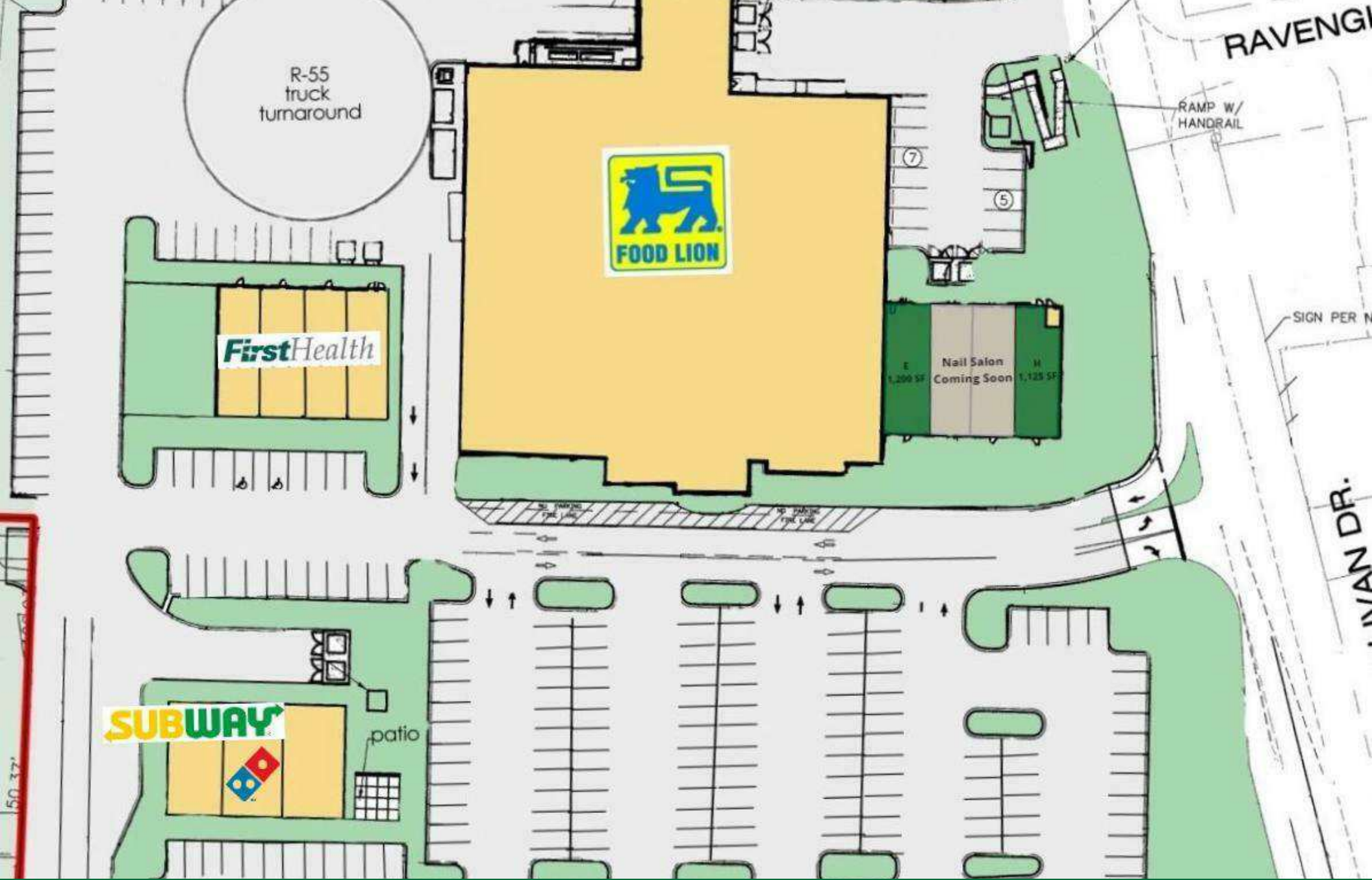
O: 910.829.1617

C: 910.988.5284

patrick@grantmurrayre.com



Grant - Murray  
REAL ESTATE, LLC  
COMMERCIAL AND INVESTMENT BROKERAGE



for more information

PATRICK MURRAY, CCIM, SIOR

Principal / Broker in Charge

O: 910.829.1617

C: 910.988.5284

patrick@grantmurrayre.com



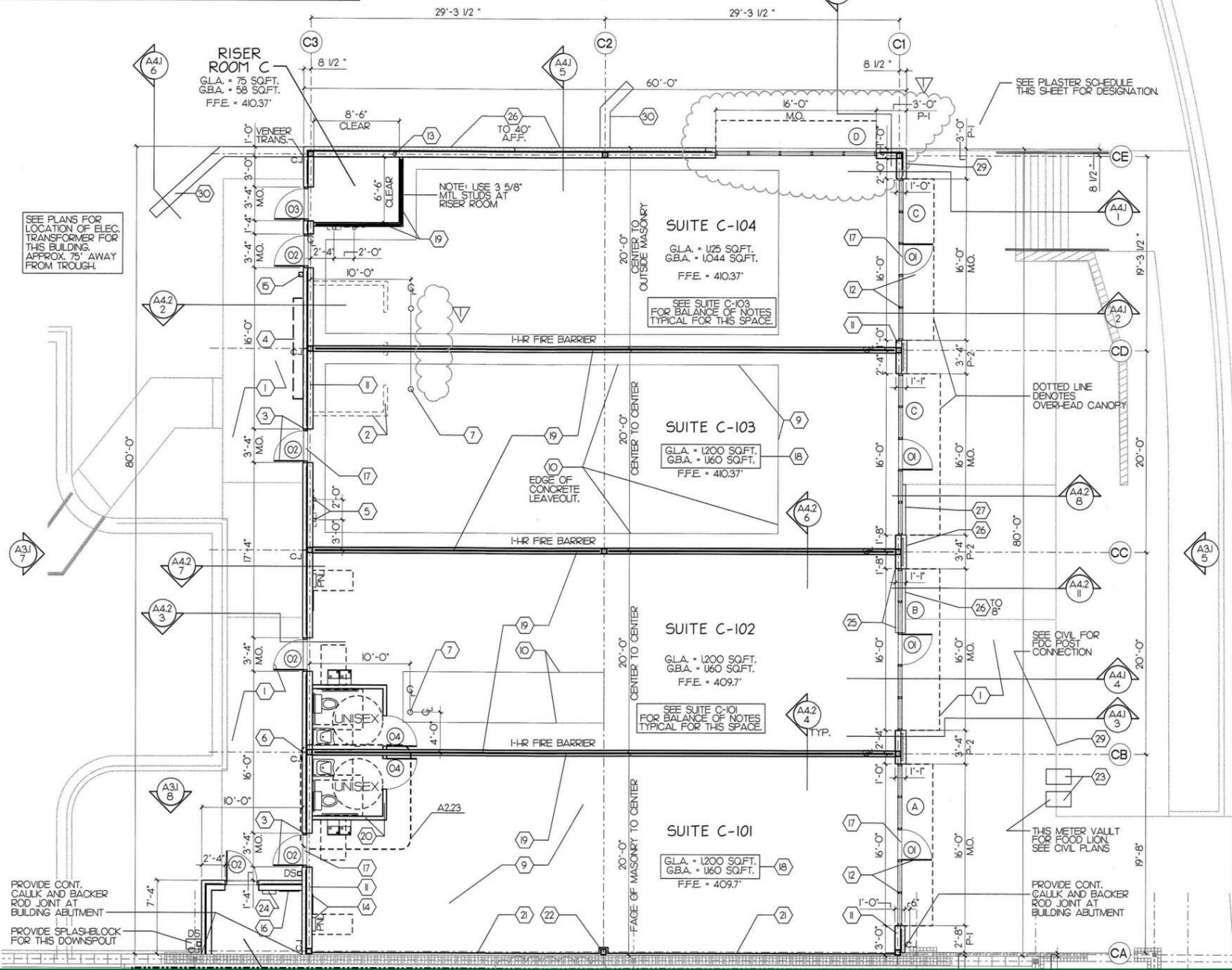
Grant - Murray

REAL ESTATE, LLC

COMMERCIAL AND INVESTMENT BROKERAGE

ABOVE 9'-4 1/10'-0" AFF.  
 SEE A41 FOR BALANCE OF CONSTRUCTION NOTES.

ABOVE 9'-4 1/10'-0" AFF.  
 SEE A43 FOR BALANCE OF CONSTRUCTION NOTES.



**b**  
 978 TRINITY ROAD -

WILLIAM G. SPI...  
 747...  
 LEIGH...

DATE	REMARKS/REVISIONS
11/06/08	PROJECT ENTERED INTO COMPUTER
02/13/09	FOR OWNER REVIEW
06/18/09	RELEASED FOR PERMIT

**BUILDINGS A & C**  
 FOR THE SHOPS AT  
 WHICHPING PINES

for more information

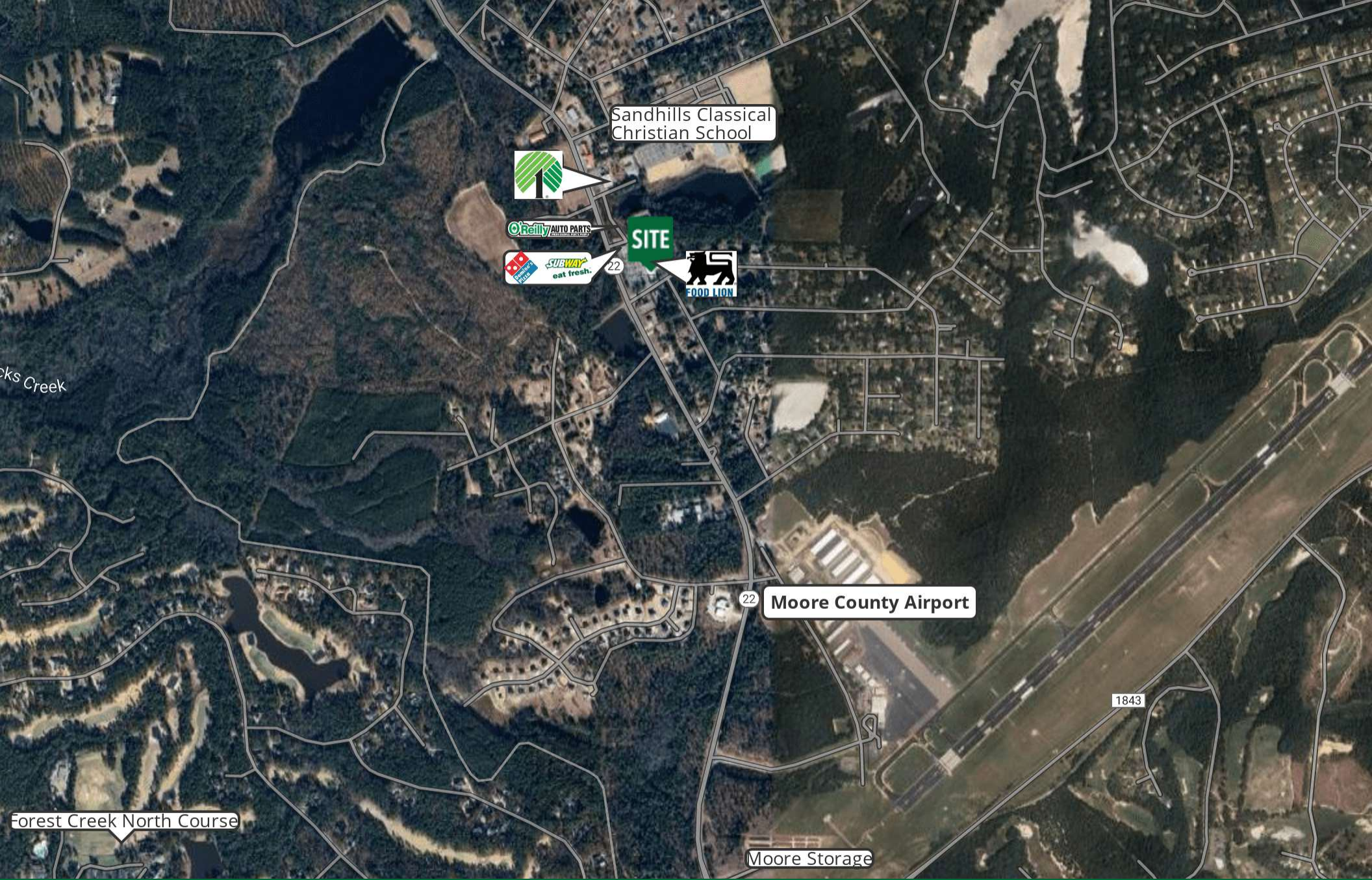
**PATRICK MURRAY, CCIM, SIOR**  
 Principal / Broker in Charge  
 O: 910.829.1617  
 C: 910.988.5284  
 patrick@grantmurrayre.com

**FLOOR PLAN**

SCALE: 1/8" = 1'-0"



**Grant - Murray**  
 REAL ESTATE, LLC  
 COMMERCIAL AND INVESTMENT BROKERAGE



Sandhills Classical Christian School



O'Reilly AUTO PARTS



SITE



Moore County Airport

Moore Storage

Forest Creek North Course

for more information

PATRICK MURRAY, CCIM, SIOR

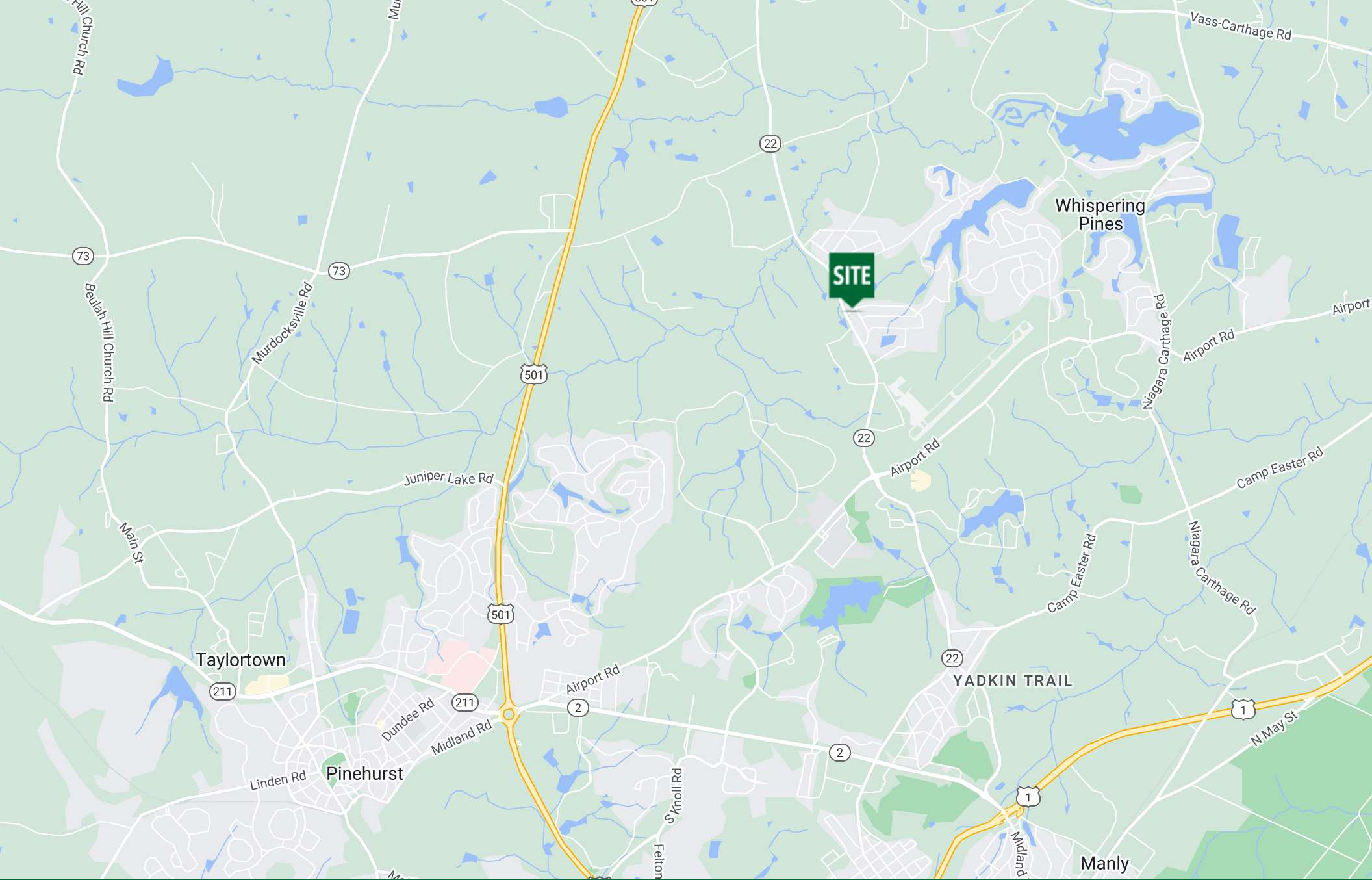
Principal / Broker in Charge  
O: 910.829.1617  
C: 910.988.5284  
patrick@grantmurrayre.com



Grant - Murray  
REAL ESTATE, LLC  
COMMERCIAL AND INVESTMENT BROKERAGE

150 N. McPherson Church Rd | Fayetteville, NC 28303 | [www.grantmurrayre.com](http://www.grantmurrayre.com)





for more information

PATRICK MURRAY, CCIM, SIOR  
Principal / Broker in Charge  
O: 910.829.1617  
C: 910.988.5284  
patrick@grantmurrayre.com

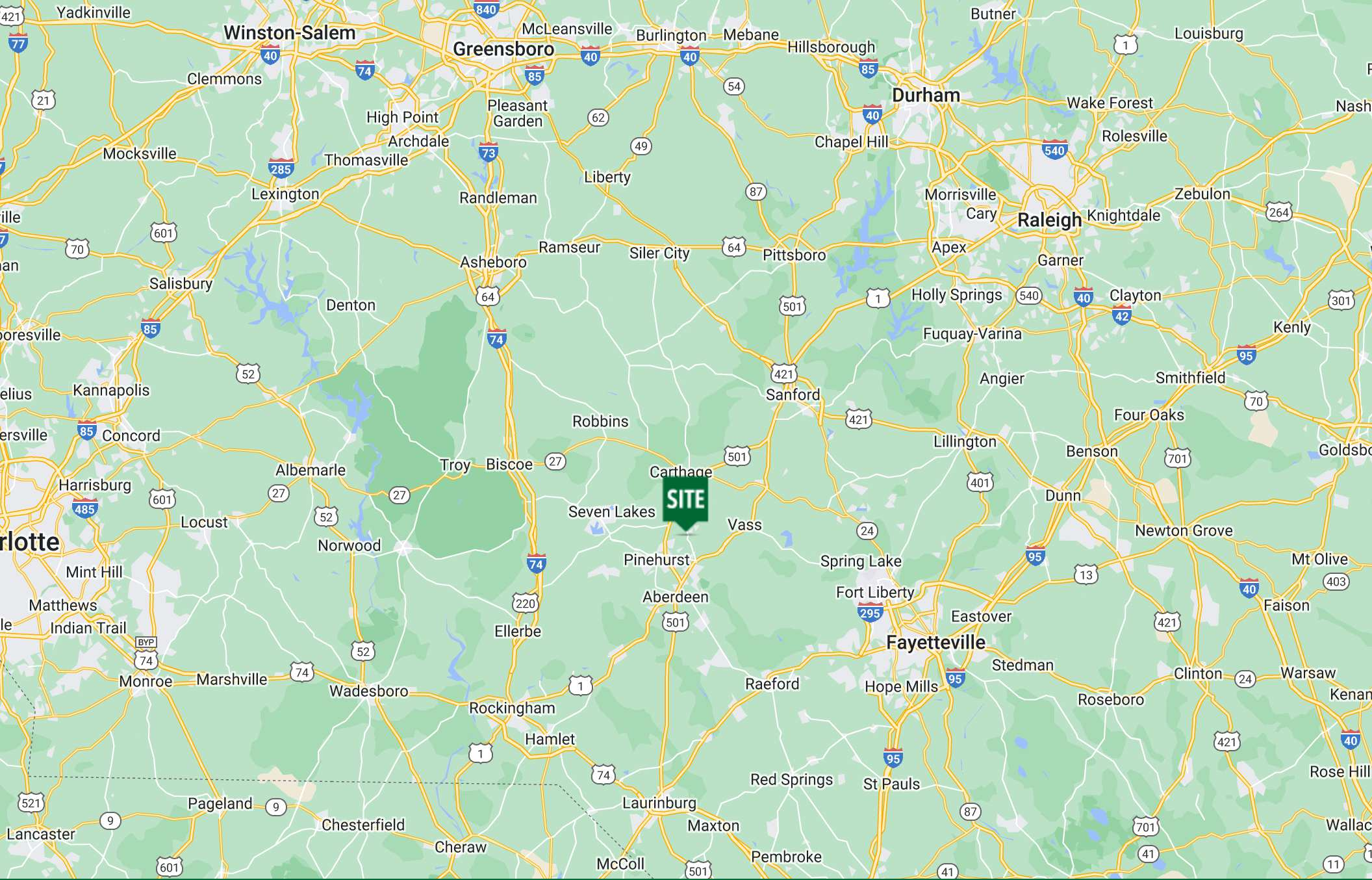


**Grant - Murray**  
REAL ESTATE, LLC  
COMMERCIAL AND INVESTMENT BROKERAGE

150 N. McPherson Church Rd | Fayetteville, NC 28303 | [www.grantmurrayre.com](http://www.grantmurrayre.com)

Map data © 2024





**SITE**

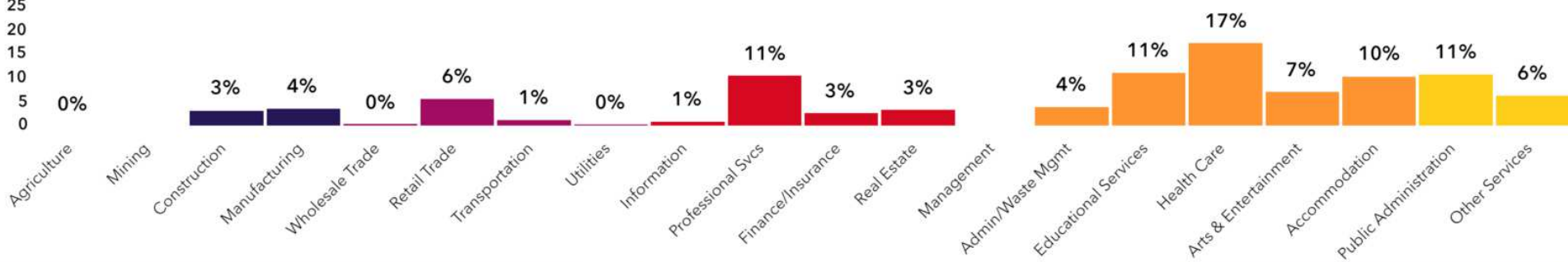
for more information  
Heath Springs  
Kershaw  
Bethune  
Cassatt  
Hartsville  
Latta  
Whiteville  
Lake  
RGooglewood

**PATRICK MURRAY, CCIM, SIOR**  
Principal / Broker in Charge  
O: 910.829.1617  
C: 910.988.5284  
patrick@grantmurrayre.com



**Grant - Murray**  
REAL ESTATE, LLC  
COMMERCIAL AND INVESTMENT BROKERAGE

150 N. McPherson Church Rd | Fayetteville, NC 28303 | [www.grantmurrayre.com](http://www.grantmurrayre.com)



**12,433**  
Total Population

## Population

**9,942**  
Daytime Population

**\$101,809**  
Median HH Income

## Income

**\$52,519**  
Per Capita Income

**4,897**  
Total Households

## Housing

**5,391**  
Total Housing Units

**\$451,526**  
Median Home Value

## Homes

**83.6%**  
Home Ownership

**44.1**  
Median Age

## People

**Comfortable Empty Nesters**  
Tapestry Segment

# Demographics

**7357-7479 NC-22, Carthage, North Carolina, 28327**



for more information

PATRICK MURRAY, CCIM, SIOR  
Principal / Broker in Charge  
O: 910.829.1617 x4 (2024), Esri (2024).  
C: 910.988.5284  
patrick@grantmurrayre.com

Source: U.S. Census Bureau, Census 2010 Summary File 1, Esri forecasts for 2024 and 2028

