

LEASE



**TURN-KEY
MEDICAL SUITE**

**1304
15TH
STREET**
SANTA MONICA

DETAILS

1304 15TH STREET, SUITE 314
SANTA MONICA, CA 90401

Corner medical office boutique building within walking distance UCLA Westside and Providence Saint John's Health Center. Move-in ready medical/dental suite available for immediate occupancy.

SIZE
1,018 SF

PRICE
Call for details

TERM
Negotiable

PARKING
\$250/reserved
\$185/unreserved

LISTING TEAM

JAKE ZACUTO
Managing Director
310.469.9012
jake@zacutogroup.com
BRE #01377441

LEOR BINSHTOCK
Executive Vice President
310.469.9014
leor@zacutogroup.com
BRE #01773798

JOHN LOGAN
Senior Director
931.561.9561
john@zacutogroup.com
BRE# 02161147

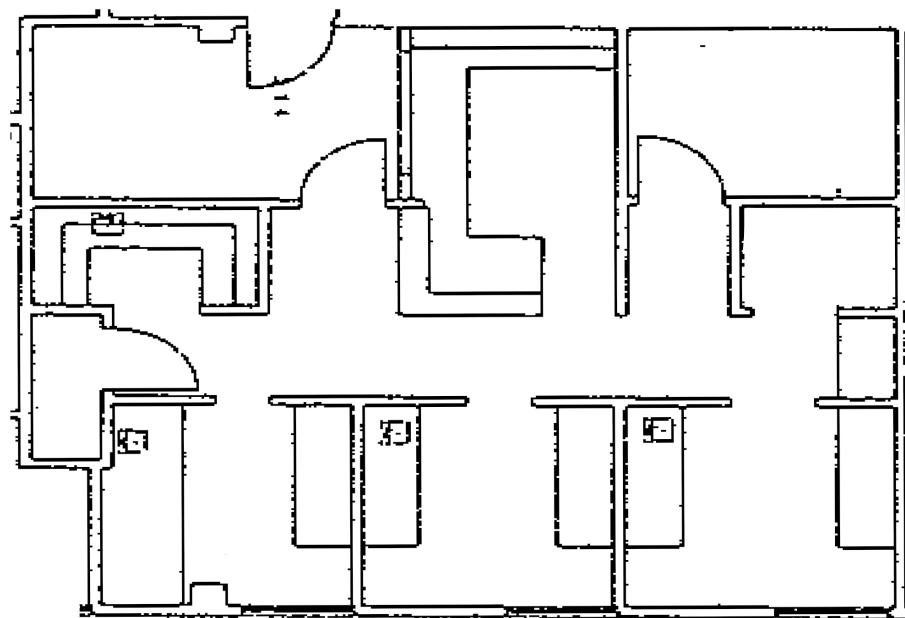


INTERIOR PHOTOS

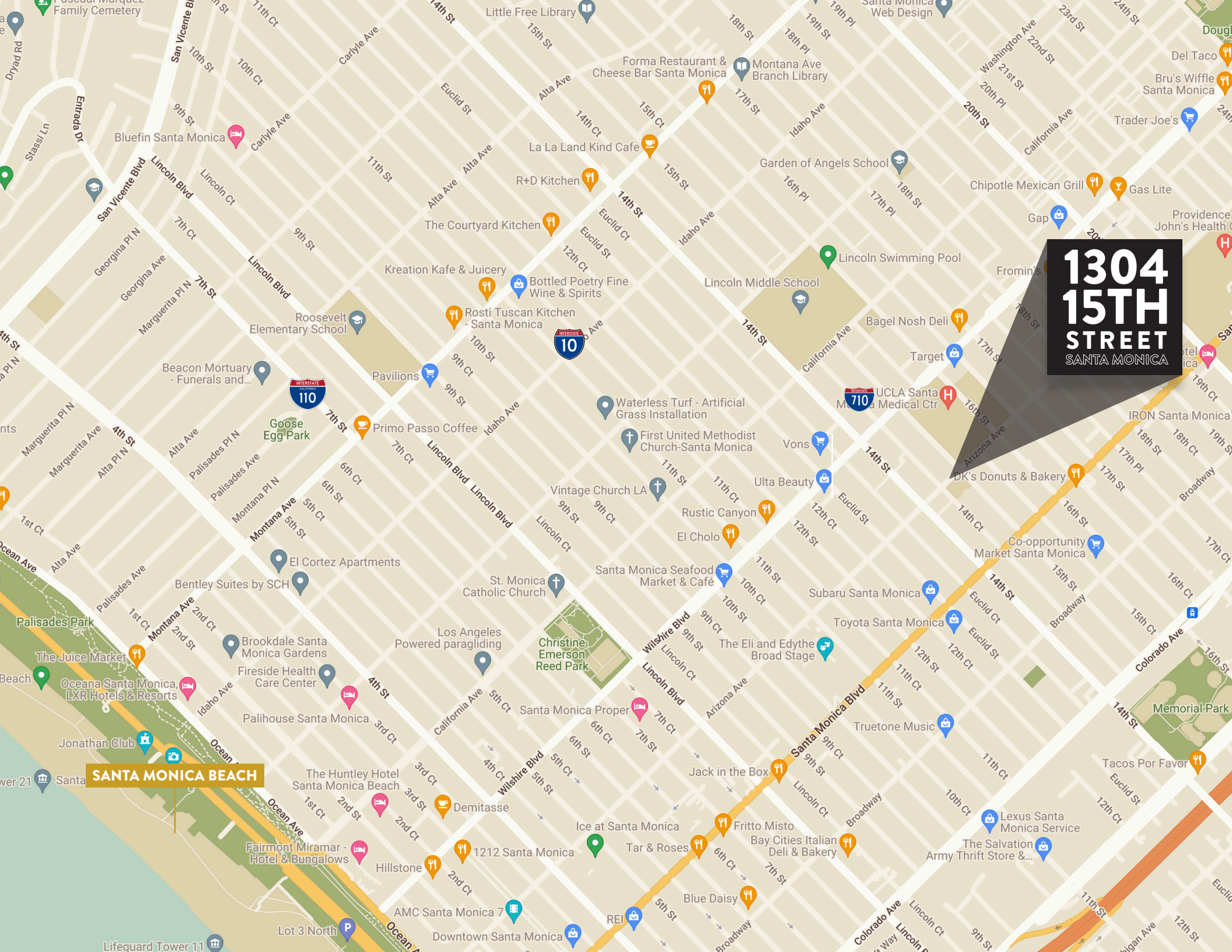


**1304
15TH
STREET**
SANTA MONICA

FLOOR PLAN



**1304
15TH
STREET**
SANTA MONICA



SANTA MONICA BEACH



1304 15TH STREET SANTA MONICA



JAKE ZACUTO

Managing Director

310.469.9012

jake@zacutogroup.com

BRE #01377441

LEOR BINSHTOCK

Executive Vice President

310.469.9014

leor@zacutogroup.com

BRE #01773798

JOHN LOGAN

Senior Director

931.561.9561

john@zacutogroup.com

BRE# 02161147

No warranty, express or implied, is made as to the accuracy of the information contained herein. This information is submitted subject to errors, omissions, change of price, rental or other conditions, withdrawal without notice. All parties who receive this material should not rely on it, but should use it as a starting point of analysis, and should independently confirm the accuracy of the information contained herein through a due diligence review of the books, records, files and documents that constitute reliable sources of the information described herein. Logos and images are for identification purposes only and may be trademarks of their respective companies. All terms provided are approximate. Leasee to verify. 7/2024

ZACUTOGROUP.COM | 310.469.9300

