

PREMIER SOUTH LINCOLN LOCATION BUILD-TO-SUIT



5555 S. 27TH STREET
LINCOLN, NE 68512

PARCEL SIZE: .84 acres

ZONING: Commercial

TERMS: Negotiable

PROPERTY HIGHLIGHTS

- Prominent Location
- Excellent Visibility & Opportunity for Brand Exposure
- Convenient Access (Multiple Points):
 - Full Movement Intersection
 - Right-in / Right-out
- Ample Surface Parking
- Drive-thru Lane Potential
- Accommodates Approximately 9,000 SF of Building Area



CONTACT US TODAY FOR MORE INFORMATION



PRISM

Commercial Division of HOME Real Estate
a Berkshire Hathaway Affiliate

TODD LORENZ
402.730.3877

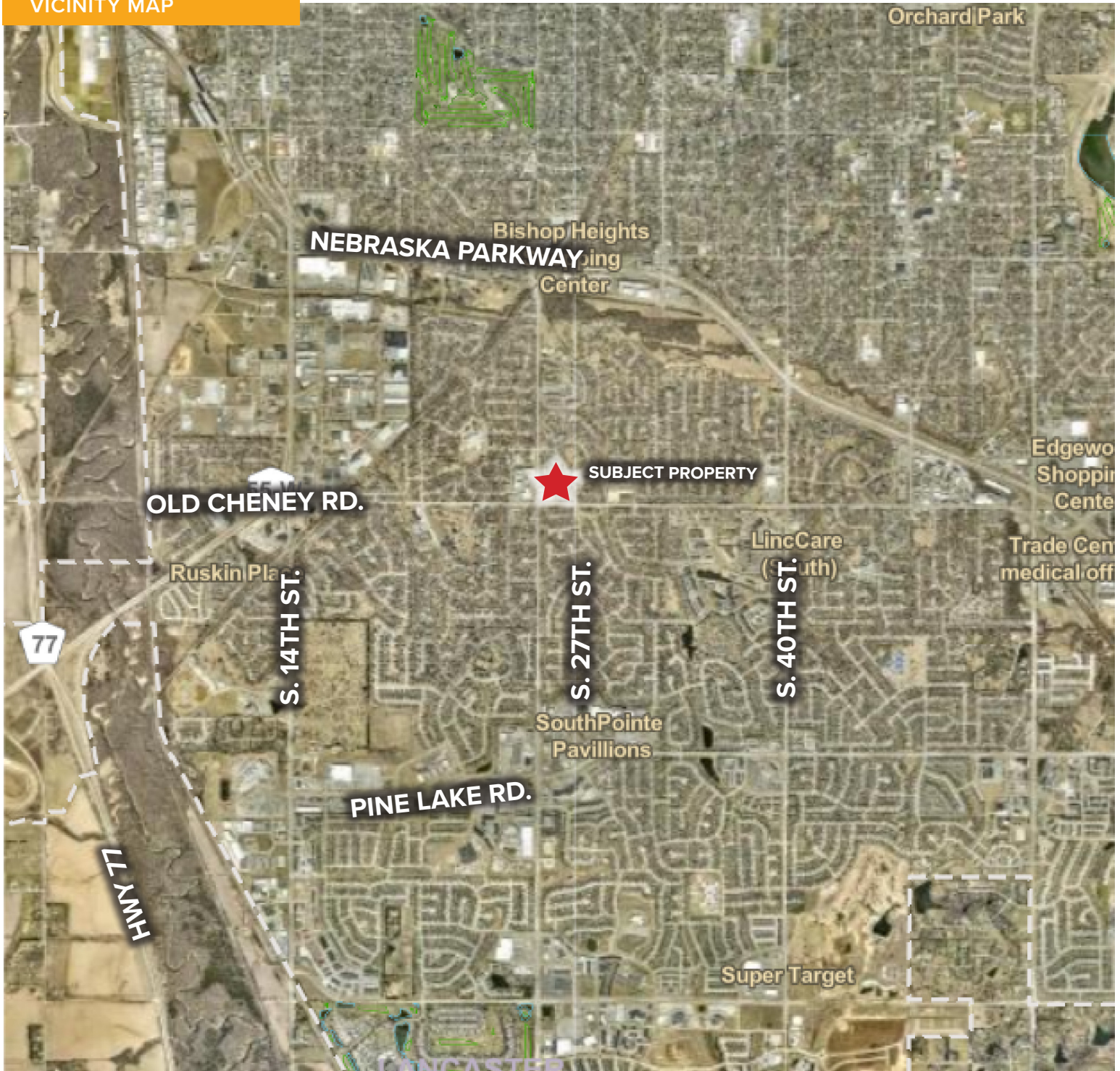
Todd.Lorenz@PrismNE.com



PREMIER SOUTH LINCOLN LOCATION BUILD-TO-SUIT



VICINITY MAP



PRISM

Commercial Division of HOME Real Estate
a Berkshire Hathaway Affiliate

TODD LORENZ
402.730.3877

Todd.Lorenz@PrismNE.com



PREMIER SOUTH LINCOLN LOCATION BUILD-TO-SUIT



TRAFFIC & ACCESS DATA



PRISM

Commercial Division of HOME Real Estate
a Berkshire Hathaway Affiliate

TODD LORENZ
402.730.3877

Todd.Lorenz@PrismNE.com

