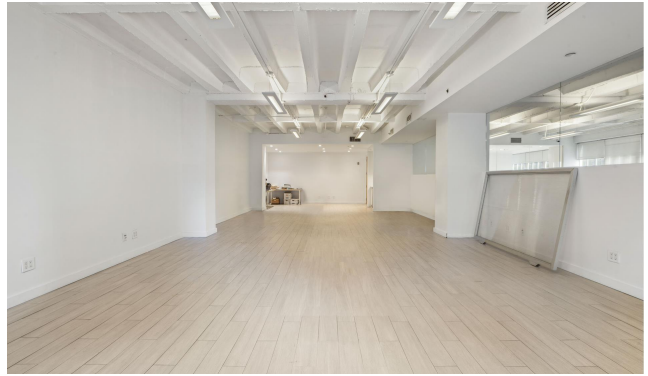
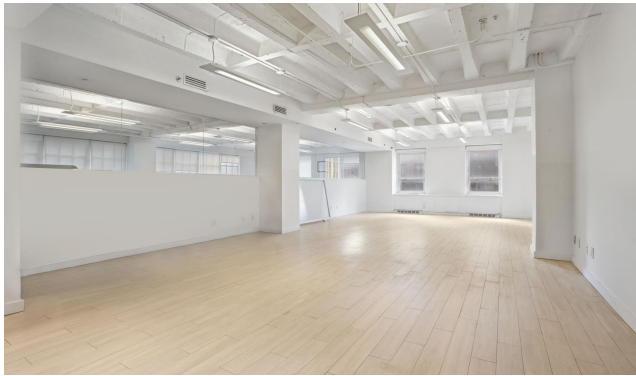


800 SECOND AVE, 800



Turtle Bay, NY, 10017

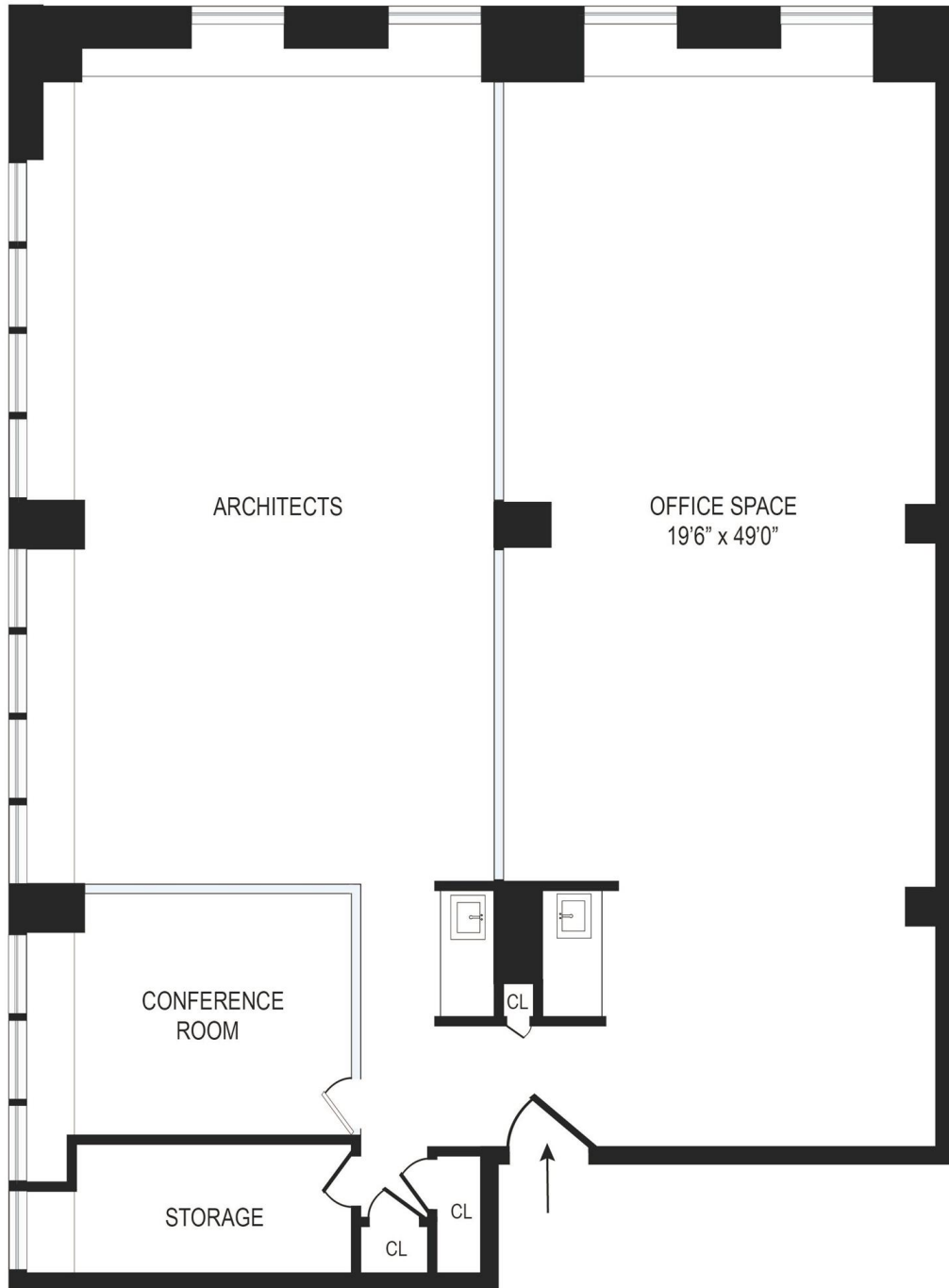
\$2,900 | Beds: 0 | Baths: 1 | Approx. SF: 800

Prime Office Space available in Midtown Manhattan. Located on the corner of 42nd Street and 2nd Avenue in the heart of Manhattan! The space is currently a blank canvas that can be used for any office use. The approximate square footage is 800SF and it shares a conference room with a high end architectural firm. The space can be used as is or there can be a separate entrance added to divide it. The asking price per SF is \$29.00 PSF. Don't delay and reach out today for a private showing. Approx. Expenses Per Month:

1. Taxes: \$782 per month.
2. Electric: \$175 per month.
3. Internet: \$190 per month.



Carter McHyman
Lic. Assoc. R. E. Broker
The McHyman Team
O 212.891.7691
M 917.776.7623
cmchyman@elliman.com



800 Second Avenue | Suite 800



While every attempt is made to ensure accuracy, this floor plan is for guidance only. The measurements, dimensions, specifications, and other data shown are approximate and may not be to scale. We assume no responsibility for the accuracy of this floor plan or for any action taken in reliance thereon. This floor plan does not create any representation, warranty or contract. All parties should consult a professional, such as an architect, to verify the information contained herein.