



3101 W Ridge Rd

Rochester, NY 14626

2 Spaces Available: 2,500 - 3,750 SF

- » Plenty of available on-site parking
- » Ideal for Retail or Office space
- » Various security measures already invested
- » New generator and roof

3101 W Ridge Rd is a 8,500 SF 2 Story office area located in Greece. The building is move in ready on the second floor with a first floor income or owner occupant space potential. This building can draw customers from its nearby Community Shopping Centers containing Wegmans, Plato's Closet, and At Home. This building has a unique exterior that will grab the attention from all passing cars.

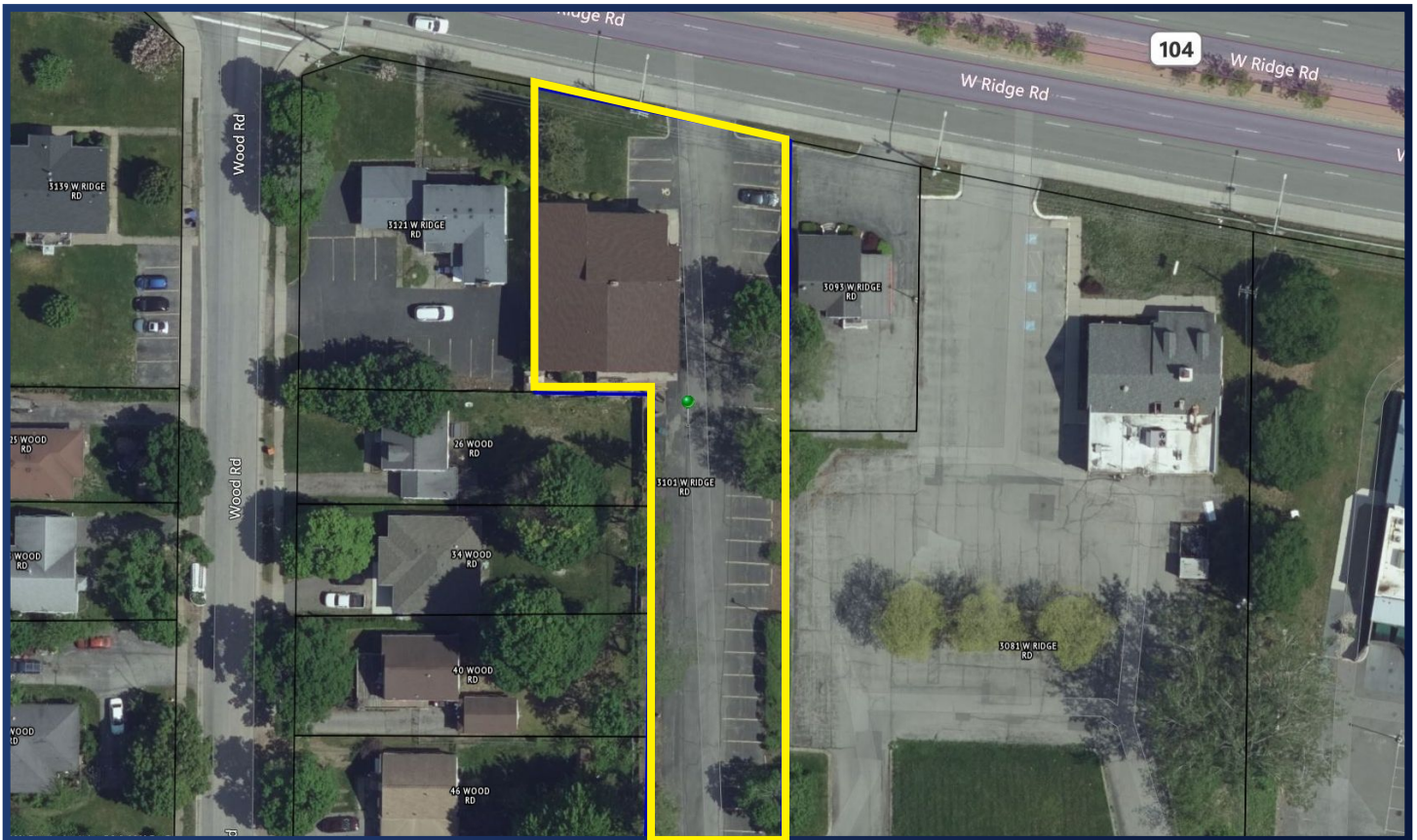
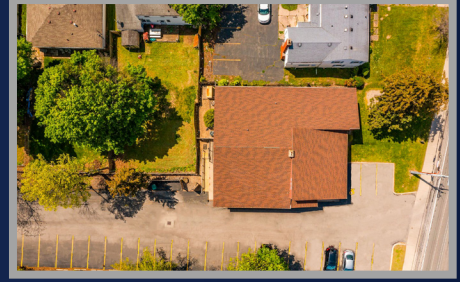
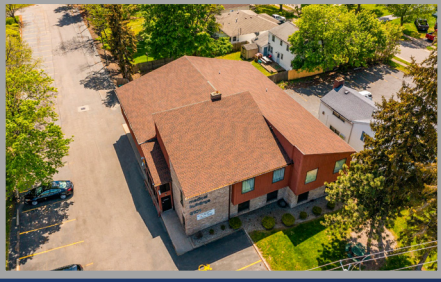


Contact Us

400 Andrews Street #500
Rochester, NY 14604
585.546.4866
www.flaummgmt.com



www.flaummgmt.com



Let our experienced professionals help you today. With decades of experience, our team brings a wealth of experience in real estate, brokerage, and project management.