

FLAGSHIP RESTAURANT/RETAIL OPPORTUNITY

BC BRANDON COHAN
REAL ESTATE // BCRE.LA

550 SOUTH HILL ST

LOS ANGELES | CA 90013



BRANDON COHAN

BRANDON@BCRE.LA | 310.654.0200 | LIC. 01903949

SHEELA SHOURED

SHEELA@BCRE.LA | 310.801.6488 | LIC. 02043384

BCRE.LA



550 SOUTH HILL ST

LOS ANGELES | CA 90013

The International Jewelry Center is the Icon of Downtown Los Angeles. Located directly across the street to Pershing Square, this flagship restaurant / retail space is the anchor to the largest jewelry building west of the Mississippi!

Featuring 18' ceiling heights, wrap around window frontage and the most exclusive open air patio. The daily pedestrian & area visitor traffic is mind blowing.

400 + retail and wholesale jewelry businesses operate within the building. More than 526,000 people are within a three mile radius. 550 S Hill Street is the pinpoint drop center to all of Downtown Los Angeles surrounded by the hottest new Hotels & Residential Developments as well as the most famous Restaurants of Los Angeles. This is a flagship monument awaiting.

1ST FLOOR

±6,500 SQFT

PATIO

±6,500 SQFT

BC BRANDON COHAN
REAL ESTATE // BCRE.LA



INTERNATIONAL
JEWELRY CENTER
1370 SOUTH HILL

INTERNATIONAL
JEWELRY PLAZA

PED XING

PATIO SPACE

550 SOUTH HILL ST

EXTERIOR

**METRO STATION
& PARKING**

550 SOUTH HILL ST

S HILL ST

W 6TH ST

PERSHING SQUARE

EXTERIOR



1ST FLOOR
±6,500 SQFT



18'5" Ceilings
Heights

1ST FLOOR
±6,500 SQFT



18'5" Ceilings
Heights

1ST FLOOR
±6,500 SQFT



18'5" Ceilings
Heights

LINDLEY PL

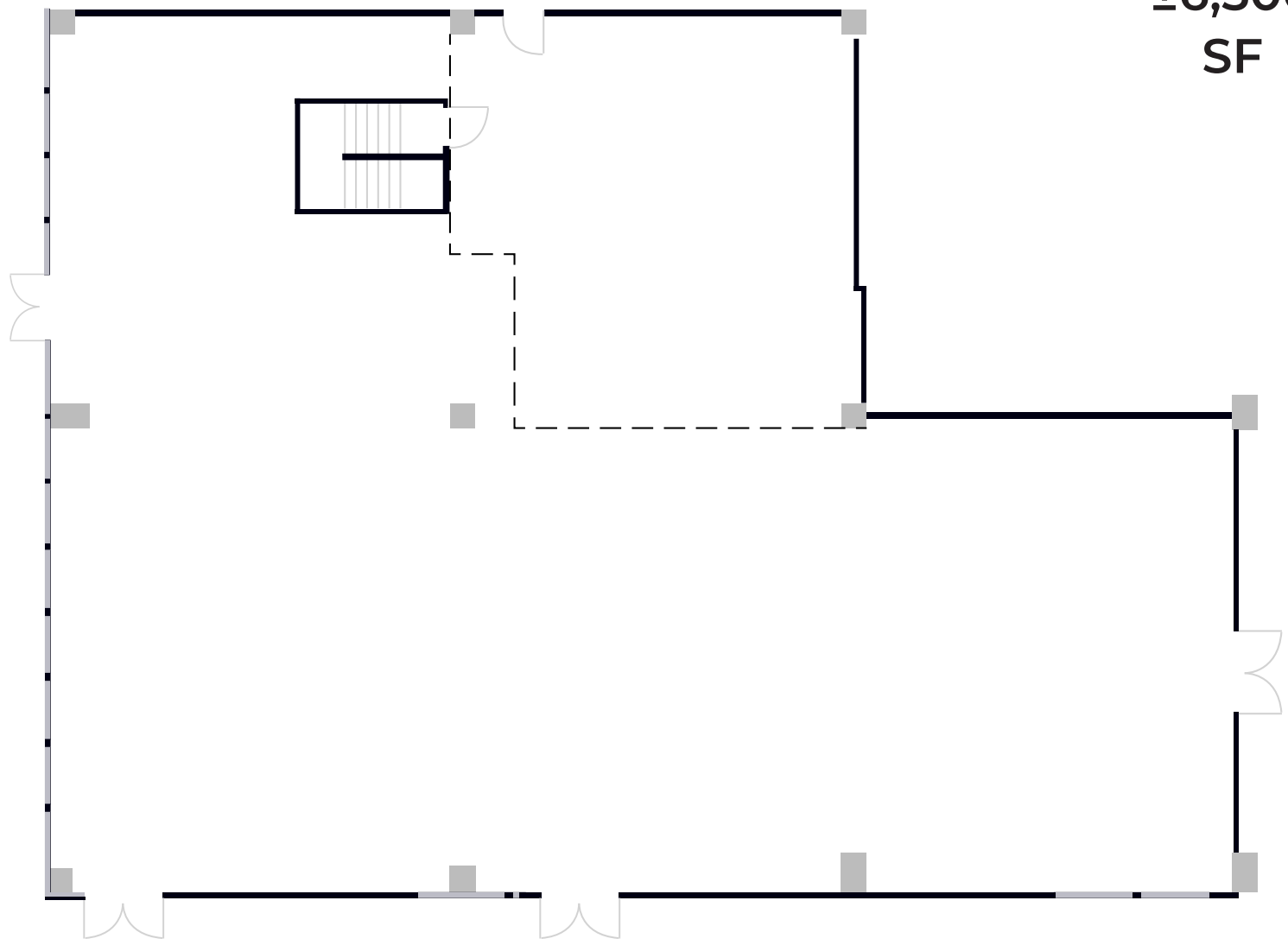
±6,500
SF

PATIO AREA

18'5"
Ceilings
Hieght

S HILL ST

1ST FLOOR PLAN



PATIO
±6,500 SQFT



PATIO
±6,500 SQFT



550 SOUTH HILL ST
LOS ANGELES | CA 90013

BRANDON COHAN
BRANDON@BCRE.LA | 310.654.0200 | LIC. 01903949
SHEELA SHOUHED
SHEELA@BCRE.LA | 310.801.6488 | LIC. 02043384

BC BRANDON COHAN
REAL ESTATE // BCRE.LA



CONFIDENTIALITY & DISCLAIMER

The information contained in this marketing brochure ("Materials") is proprietary and confidential. It is intended to be re-viewed only by the person or entity receiving it from Brandon Cohan Real Estate. The Materials are intended to be used for the sole purpose of preliminary evaluation of the subject property ("Property") for potential lease. The Materials have been prepared to provide unverified summary financial, physical, and market information to prospective buyers to enable them to establish a preliminary level of interest in potential purchase of the Property. The Materials are not to be considered fact. The information contained in the Materials is not a substitute for thorough investigation of the financial, physical, and market conditions relating to the Property. The information contained in the Materials has been obtained by Agent from sources believed to be reliable, however, no representation or warranty is made regarding the accuracy or completeness of the Materials. Agent makes no representation or warranty regarding the Property, including but not limited to income, expenses, or financial performance (past, present, or future); size, square footage, condition, or quality of the land and improvements; presence or absence of contaminating substances (PCBs, asbestos, mold, etc.); Compliance with laws and regulations (local, state, and federal); or, financial condition or business prospects of any tenant (tenant's intentions regarding continued occupancy, payment of rent, etc). Any prospective buyer must independently investigate and verify all of the information set forth in the Materials. Any prospective buyer is solely responsible for any and all costs and expenses incurred in reviewing the Materials and/or investigating and evaluating the Property. By receiving the Materials you are agreeing to the Confidentiality and Disclaimer set forth herein. All Property showings are by appointment only and must be coordinated through the Agent.