

FOR SALE \$550,000

0.76 Acre OPI Zoned Site at Signalized Intersection

Potential uses may include Professional Office, Multi-Family, Office with Storage

5844 Bahia Vista Street, Sarasota, FL 34232



**RKW
BUTTON**

LIC REAL ESTATE BROKER

JEFF BUTTON

941-313-1193

Jeff@SarasotaWarehouses.com

1869 Porter Lake Dr, Sarasota, FL 34240

FOR SALE \$550,000

0.76 Acre OPI Zoned Site at Signalized Intersection

Potential uses may include Professional Office, Multi-Family, Office with Storage
5844 Bahia Vista Street, Sarasota, FL 34232

PROPERTY SUMMARY

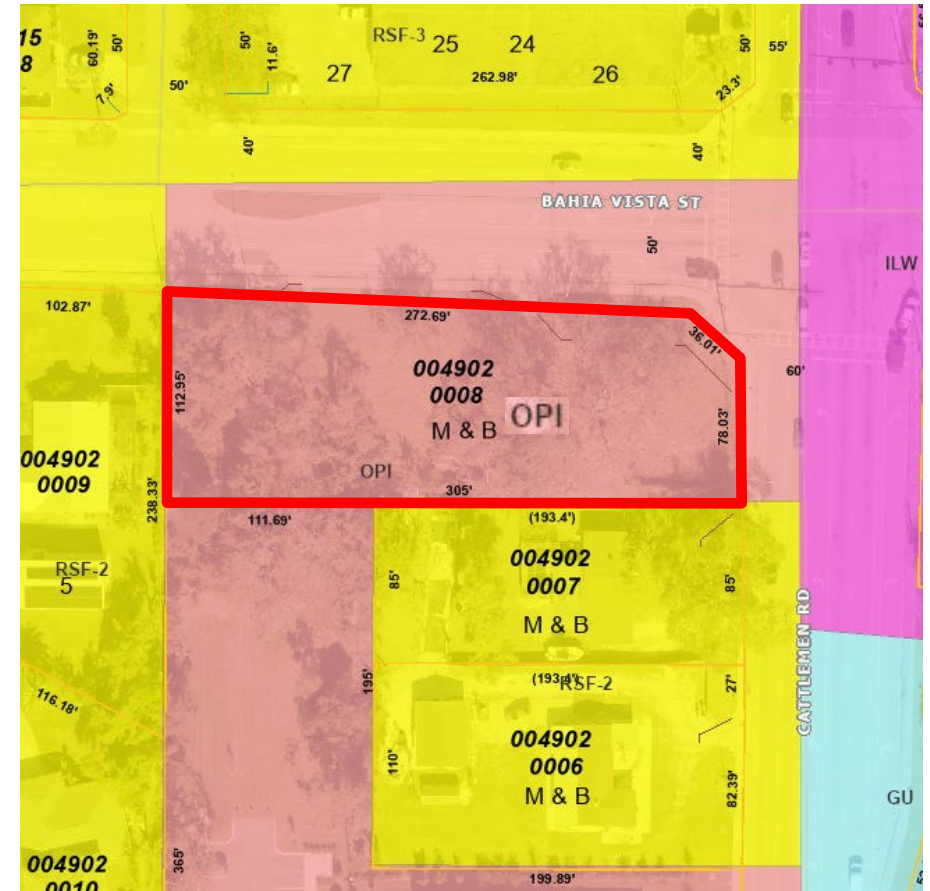
LIST PRICE: \$550,000

PROPERTY SIZE: 33,254 SF (0.76 AC)

ZONING: OPI (Office, Professional, and Institutional) Sarasota County

LOCATION: Signalized intersection of Cattlemen Rd and Bahia Vista St.
Cattlemen Rd links the Fruitville Rd / I-75 interchange, to the north, with the Bee Ridge Rd / I-75 interchange, to the south.

ZONING MAP



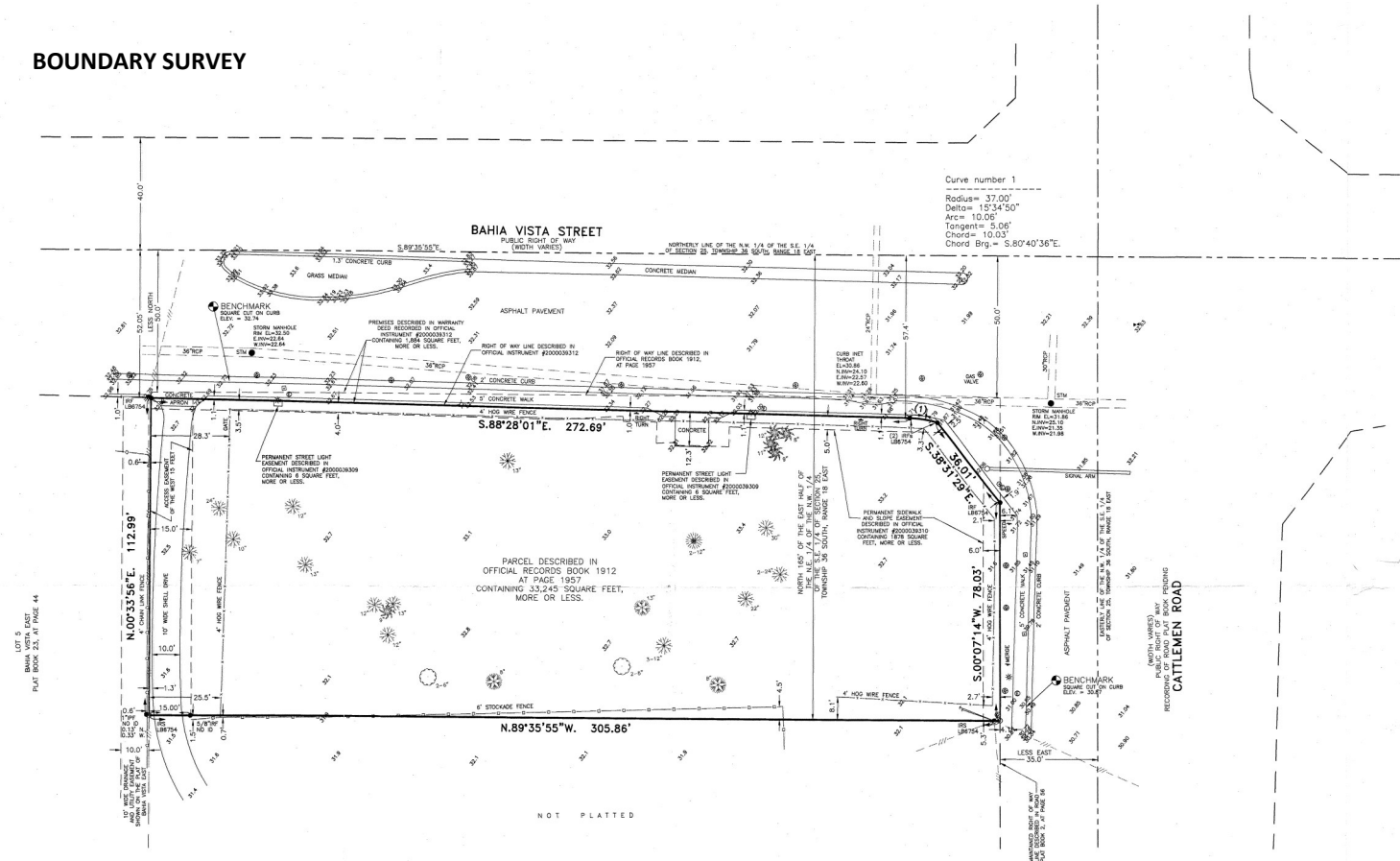
**RKW
BUTTON**

LIC REAL ESTATE BROKER

JEFF BUTTON
941-313-1193
Jeff@SarasotaWarehouses.com
1869 Porter Lake Dr, Sarasota, FL 34240

FOR SALE \$550,000
0.76 Acre OPI Zoned Site at Signalized Intersection
 Potential uses may include Professional Office, Multi-Family, Office with Storage
 5844 Bahia Vista Street, Sarasota, FL 34232

BOUNDARY SURVEY



**RKW
 BUTTON**

LIC REAL ESTATE BROKER

JEFF BUTTON
941-313-1193
Jeff@SarasotaWarehouses.com
 1869 Porter Lake Dr, Sarasota, FL 34240