

Showcase Plaza

2151 Lane Avenue South
Jacksonville, Florida 32210

Property Highlights

- Recent improvements include new exterior paint, roof, and exterior lighting.
- Highly visible pylon signage on Lane Avenue with an average daily traffic count of over 14,900 cars per day.
- Multiple points of ingress/egress including access from the traffic light at Wiley Road.
- Conveniently located on JTA's Commonwealth/Lane transportation route with all-day service 7 days a week.
- Directly across from Lane Wiley Senior Center offering daily classes, activities, and community resources.

Property Overview

Community shopping center serving the Hyde Park neighborhood of the Riverside Submarket of Jacksonville with a mix of local retail, service, and restaurant businesses.

Offering Summary

| | |
|-----------------------|----------------|
| Lease Rate: | Negotiable |
| Building Size: | 16,160 SF |
| Available SF: | 815 - 1,092 SF |
| Lot Size: | 1.48 Acres |

Demographics 1 Mile 3 Miles 5 Miles

| | | | |
|--------------------------|----------|----------|----------|
| Total Households | 5,215 | 35,795 | 73,396 |
| Total Population | 13,310 | 90,297 | 183,067 |
| Average HH Income | \$60,011 | \$72,349 | \$77,798 |

For More Information



Austin Kay

Vice President, Retail Specialist
O: 904 493 4495 | C: 904 386 4881
ak@naihallmark.com



Available Spaces

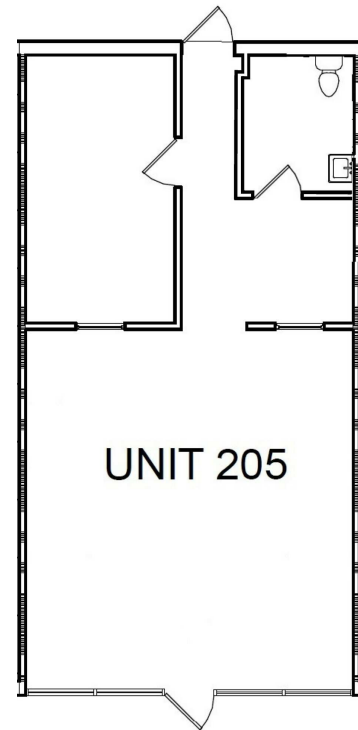
| Suite | Tenant | Size | Type | Rate |
|---------|------------------------|----------------|------|------------|
| 101-105 | Fresh Start Ministries | 806 - 5,034 SF | NNN | - |
| 201-203 | Village Wash House | 2,640 SF | NNN | - |
| 204 | P & L Seafood | 880 SF | NNN | - |
| 205 | Available | 815 SF | NNN | Negotiable |
| 206 | Ethiopian Restaurant | 1,050 SF | NNN | - |
| 301 | Retail Shop | 1,000 SF | NNN | - |
| 302-305 | Food Mart | 2,000 SF | NNN | - |
| 306-307 | Evergreen Spa | 1,200 SF | NNN | - |
| 308-309 | Available | 1,092 SF | NNN | Negotiable |

For Lease

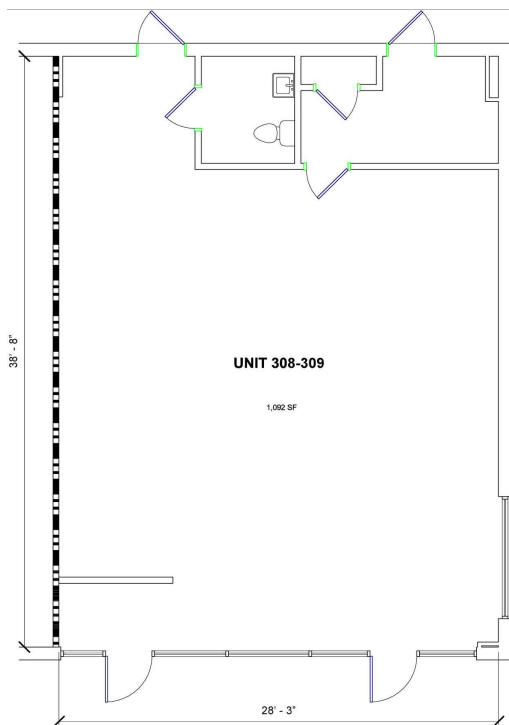
815 - 1,092 SF | Negotiable
Retail Space



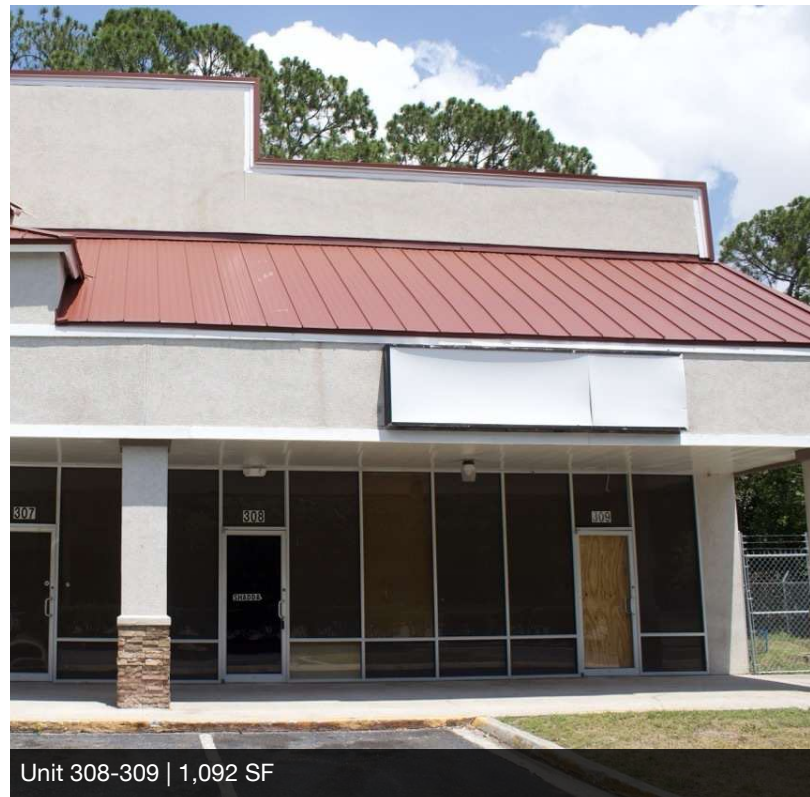
Unit 205 | 815 SF



Unit 205 | 815 SF



Unit 308-309 | 1,092 SF



Unit 308-309 | 1,092 SF



Village Wash House Coin Laundry



P & L Seafood



Lalibela Ethiopian Restaurant



Evergreen Spa



