

FOR LEASE

30540 BECK ROAD, WIXOM, MICHIGAN 48393



FOR DETAILS CONTACT:

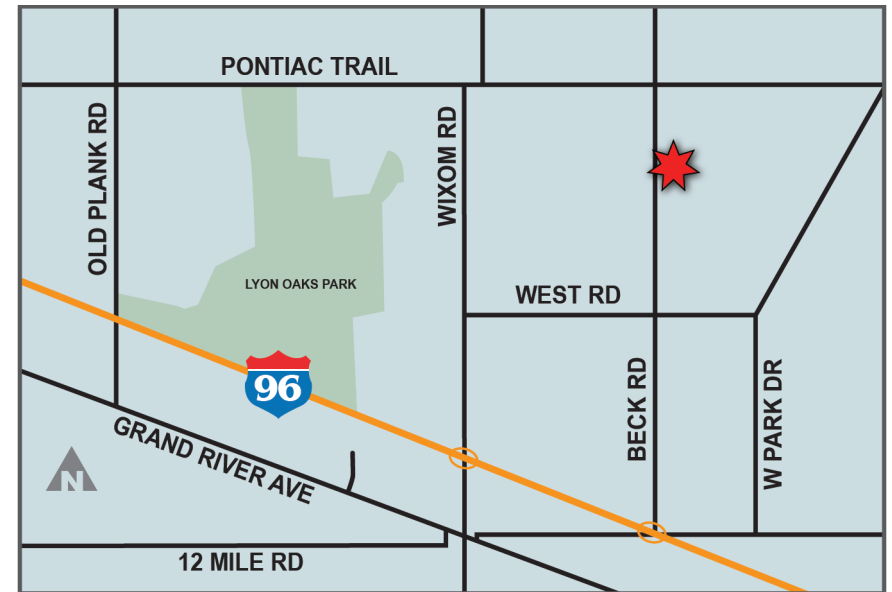
Jon Savoy, CCIM, SIOR
jon.savoy@lee-associates.com
(248) 567-8000

26555 Evergreen Rd, Suite 1060
Southfield, Michigan 48076
248.351.3500 | lee-associates.com

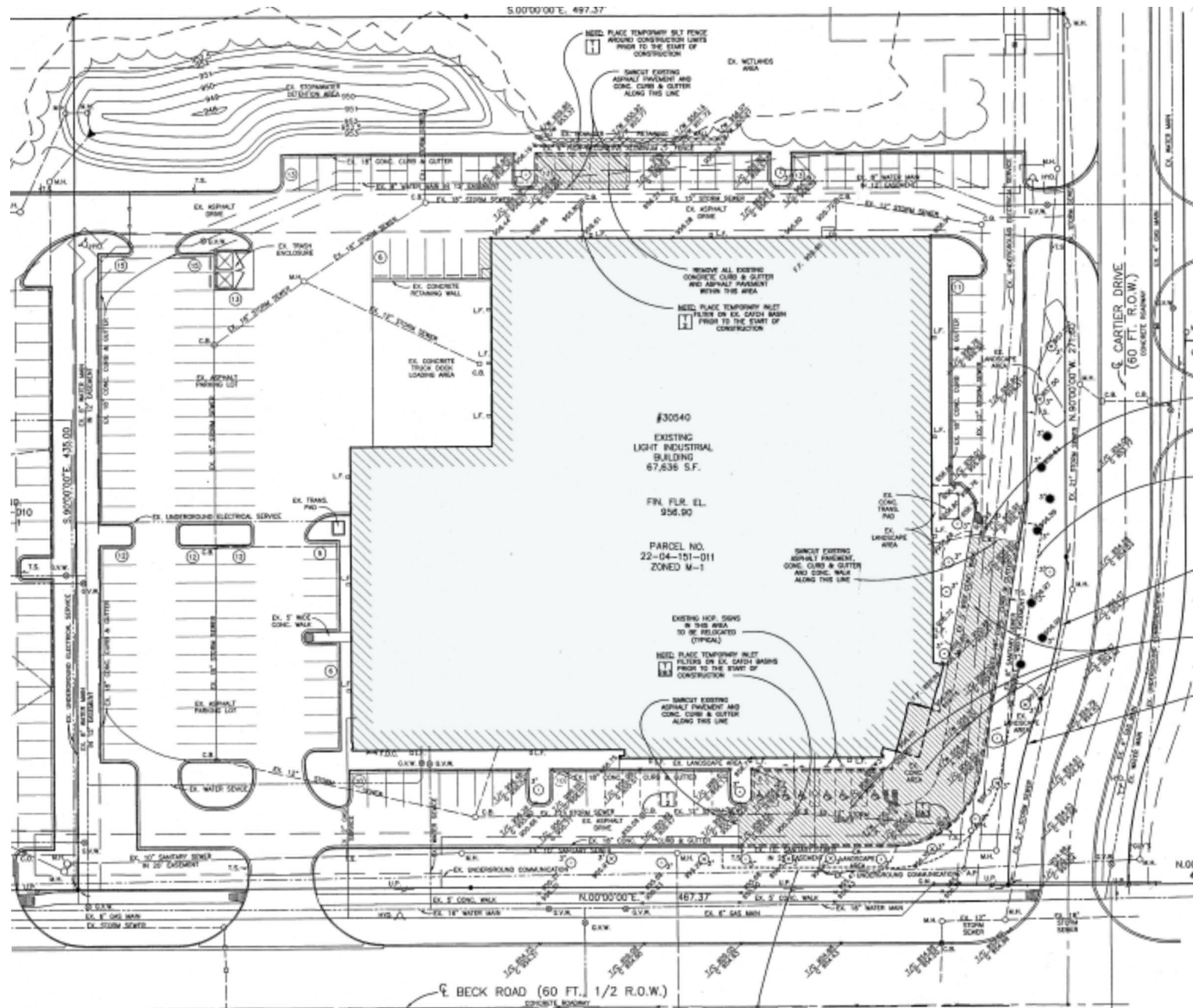
PROPERTY FEATURES

- ± 68,092 SF Industrial Warehouse
- 7,000 SF Office
- 8,200 SF Mezzanine
- 27' Ceiling Height
- ± 7.08 Acres
- 168 Car Parking Spaces
- Zoned M-1
- Parcel ID: 22-04-151-011
- Built in 2005
- Six Loading Docks
- Two (12' x 14') Grade Level Doors
- 4,000amp, 480v, 3p Power

ASKING LEASE RATE: \$9.95 PSF NNN



SITE PLANS



Jon Savoy, CCIM, SIOR | jon.savoy@lee-associates.com | (248) 567-8000

Lee & Associates of Michigan | 26555 Evergreen Rd, Suite 1060 | Southfield, Michigan 48076 | 248.351.3500 | lee-associates.com

FOR LEASE | 30540 Beck Rd., Wixom, Michigan | 3

All information furnished regarding property for sale, rental or financing is from sources deemed reliable, but no warranty or representation is made to the accuracy thereof and some is submitted to errors, omissions, change of price, rental or other conditions prior to sale, lease or financing or withdrawal without notice. No liability of any kind is to be imposed on the broker herein.

Lee & Associates of Michigan 26555 Evergreen Rd, Suite 1060 Southfield, Michigan 48076 248.351.3500 | lee-associates.com

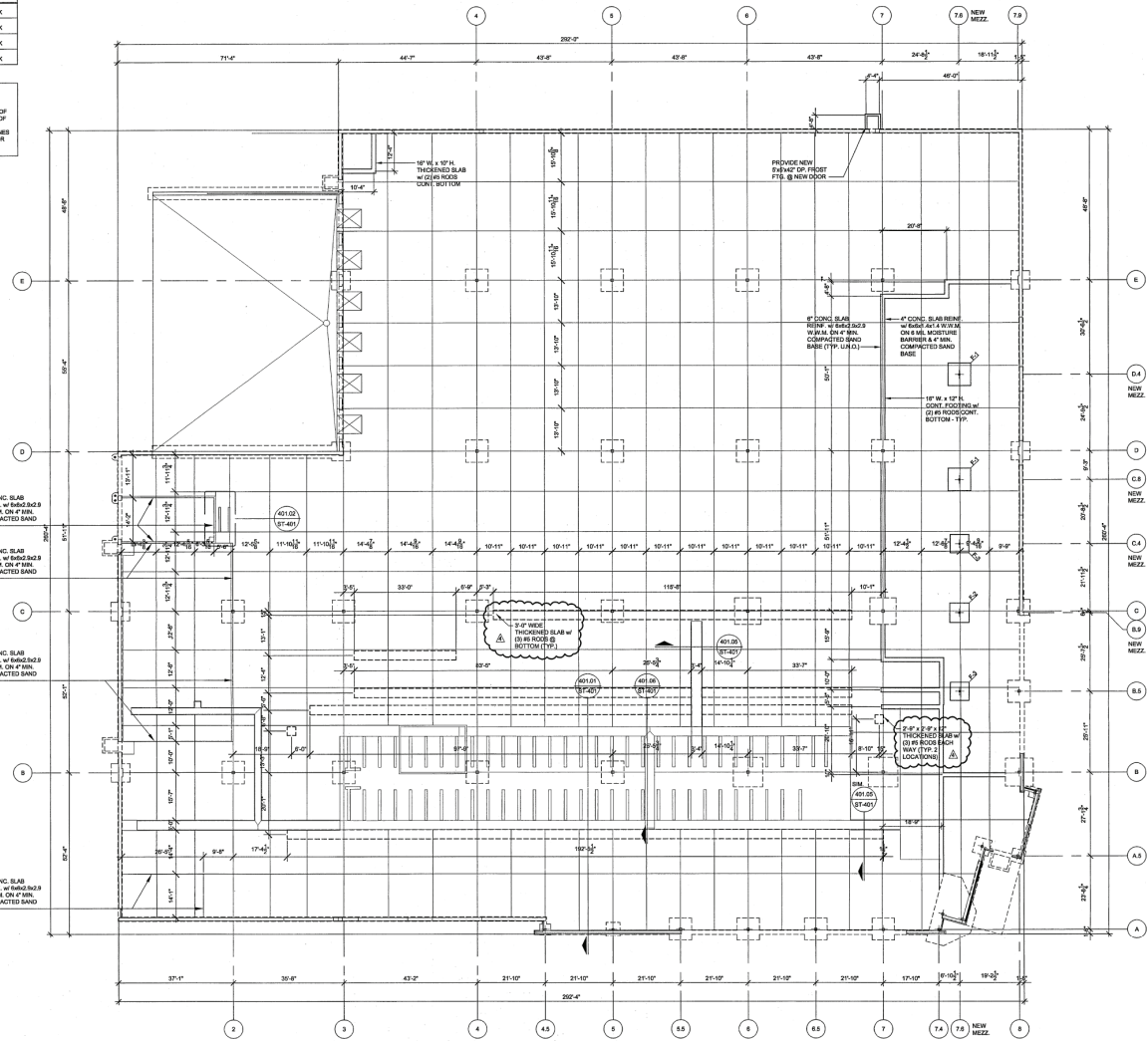
FOR LEASE | 30540 Beck Rd., Wixom, Michigan | 4

All information furnished regarding property for sale, rental or financing is from sources deemed reliable, but no warranty or representation is made to the accuracy thereof and some is submitted to errors, omissions, change of price, rental or other conditions prior to sale, lease or financing or withdrawal without notice. No liability of any kind is to be imposed on the broker herein.

SITE PLANS

FOOTING SCHEDULE (BASED ON 3,000 psf)				
MARK	SIZE	ALTERNATE SIZE	LEVELING PLATE	ANCHOR BOLTS
F-1	7'-0" X 7'-0" X 4'-0"	7'-0" X 7'-0" X 1'-0" W/ (6) #4 E.W.	11"x11"x1/2"	(4) 2W X 18" LONG W/ 8" HOOK
F-2	6'-0" X 6'-0" X 4'-0"	6'-0" X 6'-0" X 1'-0" W/ (4) #4 E.W.	11"x11"x1/2"	(4) 2W X 18" LONG W/ 8" HOOK
F-3	6'-0" X 6'-0" X 4'-0"	6'-0" X 6'-0" X 1'-0" W/ (4) #4 E.W.	11"x11"x1/2"	(4) 2W X 18" LONG W/ 8" HOOK
F-4	3'-0" X 3'-0" X 4'-0"	3'-0" X 3'-0" X 1'-0" W/ (3) #4 E.W.	10"x10"x1/2"	(4) 2W X 18" LONG W/ 8" HOOK

NOTE:
ALL NEW FOOTING DIMENSIONS
ARE TAKEN FROM CENTERLINE OF
EXISTING BUILDING OR NEW
MEZZANINE COLUMN CENTERLINE
OR TO INSIDE FACE OF EXISTING
WALL.



NORTH
OVERALL BUILDING FOUNDATION PLAN
SCALE: 1/8\"/>

biddison |
architecture + design
37700 Woodward Blvd. Suite 100
Farmington Hills, MI 48334
(248) 463-1700 / 248-463-7710

Consultants
WAKELY ASSOCIATES
Architecture Engineering
Interior Design Technology
Wakely Associates
1625 E. Riverfield Street
Mt. Pleasant, MI 48858
Phone: (313) 773-8955
Fax: (313) 773-4157
Contact Person: Michael A. Kohn, P.E.
e-mail: Mike@wakely.com

JESSUP ENGINEERING, INC.
240 BOND STREET, DOORSTREET, WILMINGTON, DE 19801

Project title
PROPOSED BUILDING LAYOUT FOR:
ADEPT PLASTIC
FINISHING, INC.
BECK NORTH CORPORATE PARK
30540 BECK ROAD
WIXOM, MICHIGAN 48393

Issued date
PRELIMINARY BIDS
BIDS & PERMITS
CONSTRUCTION
REVISIONS FOR OWNER
01.09.07
02.08.07
02.12.07
03.15.07

Sheet title
OVERALL BUILDING
FOUNDATION
PLAN



Project no.
1550-06

Sheet no.
ST.101

Jon Savoy, CCIM, SIOR jon.savoy@lee-associates.com (248) 567-8000
Lee & Associates of Michigan 26555 Evergreen Rd, Suite 1060 Southfield, Michigan 48076 248.351.3500 | lee-associates.com

FOR LEASE | 30540 Beck Rd., Wixom, Michigan | 6

All information furnished regarding property for sale, rental or financing is from sources deemed reliable, but no warranty or representation is made to the accuracy thereof and some is submitted to errors, omissions, change of price, rental or other conditions prior to sale, lease or financing or withdrawal without notice. No liability of any kind is to be imposed on the broker herein.

PHOTOS



Jon Savoy, CCIM, SIOR jon.savoy@lee-associates.com (248) 567-8000
Lee & Associates of Michigan 26555 Evergreen Rd, Suite 1060 Southfield, Michigan 48076 248.351.3500 | lee-associates.com

FOR LEASE | 30540 Beck Rd., Wixom, Michigan | 7

All information furnished regarding property for sale, rental or financing is from sources deemed reliable, but no warranty or representation is made to the accuracy thereof and some is submitted to errors, omissions, change of price, rental or other conditions prior to sale, lease or financing or withdrawal without notice. No liability of any kind is to be imposed on the broker herein.