

Monument Park Office Downtown Dexter

8031 Main, Dexter, MI 48130



FOR LEASE



OFFERING SUMMARY

Suite 202:	\$23.00 SF/yr NNN
	890 SF
Suite 302:	\$23.00/SF/yr NNN
	700 SF
Zoning:	CBD (CENTRAL BUSINESS DISTRICT)

PROPERTY HIGHLIGHTS

- Downtown Dexter office suites
- Across from Monument Park
- Private office and bullpen area
- Passenger elevator
- Common restrooms on each floor
- Free parking behind and adjacent to building
- Other professional and restaurant tenants onsite
- Easy access to I-94, M-14, and Ann Arbor

DEMOGRAPHICS	1 MILE	3 MILES	5 MILES
Total Households	1,386	3,779	9,809
Total Population	3,545	10,013	26,180
Average HH Income	\$143,322	\$149,489	\$164,147

Jeff Evans

734.926.0222

jeffevans@swishercommercial.com

Monument Park Office Downtown Dexter

8031 Main, Dexter, MI 48130



For Lease



PROPERTY DESCRIPTION

Great location Downtown Dexter at corner of Baker Road and Ann Arbor/Main Street. Next to popular Dairy Queen. Across from Gazebo Park site of Dexter Daze and other community gatherings.

Building is 21,000 sf with entire ground level occupied by Aubree's restaurant. Professional office and services on 2nd and 3rd floors. Building has elevators and common area restrooms.

Located in a prominent, well-maintained building, the office suites include:

- Private Office: Ample natural light from large windows
- Open Bullpen Area: Flexible workspace for teams or collaborative work
- Parking: On-site parking available behind the building for tenants and guests
- Building Amenities: Common restrooms, elevator access, and a first-floor restaurant
- Proximity: Walking distance to downtown Dexter's many restaurants, retailers, and parks

These office spaces are perfect for businesses looking to establish themselves in the heart of Dexter with a vibrant community feel.



Jeff Evans

734.926.0222

jeffevans@swishercommercial.com

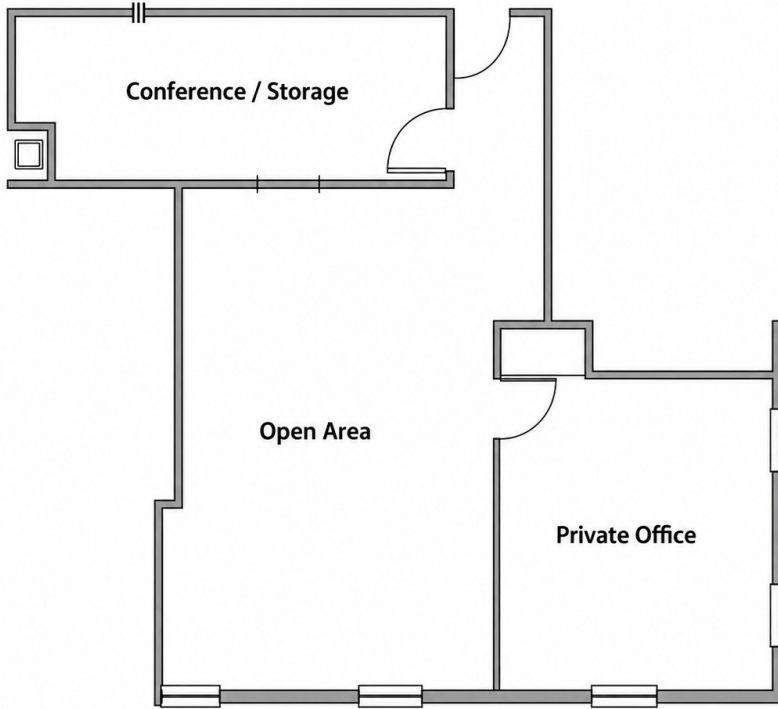
Monument Park Office Suite Downtown Dexter

8031 Main, Suite 202, Dexter, MI 48130



For Lease

Suite 202



Jeff Evans

734.926.0222

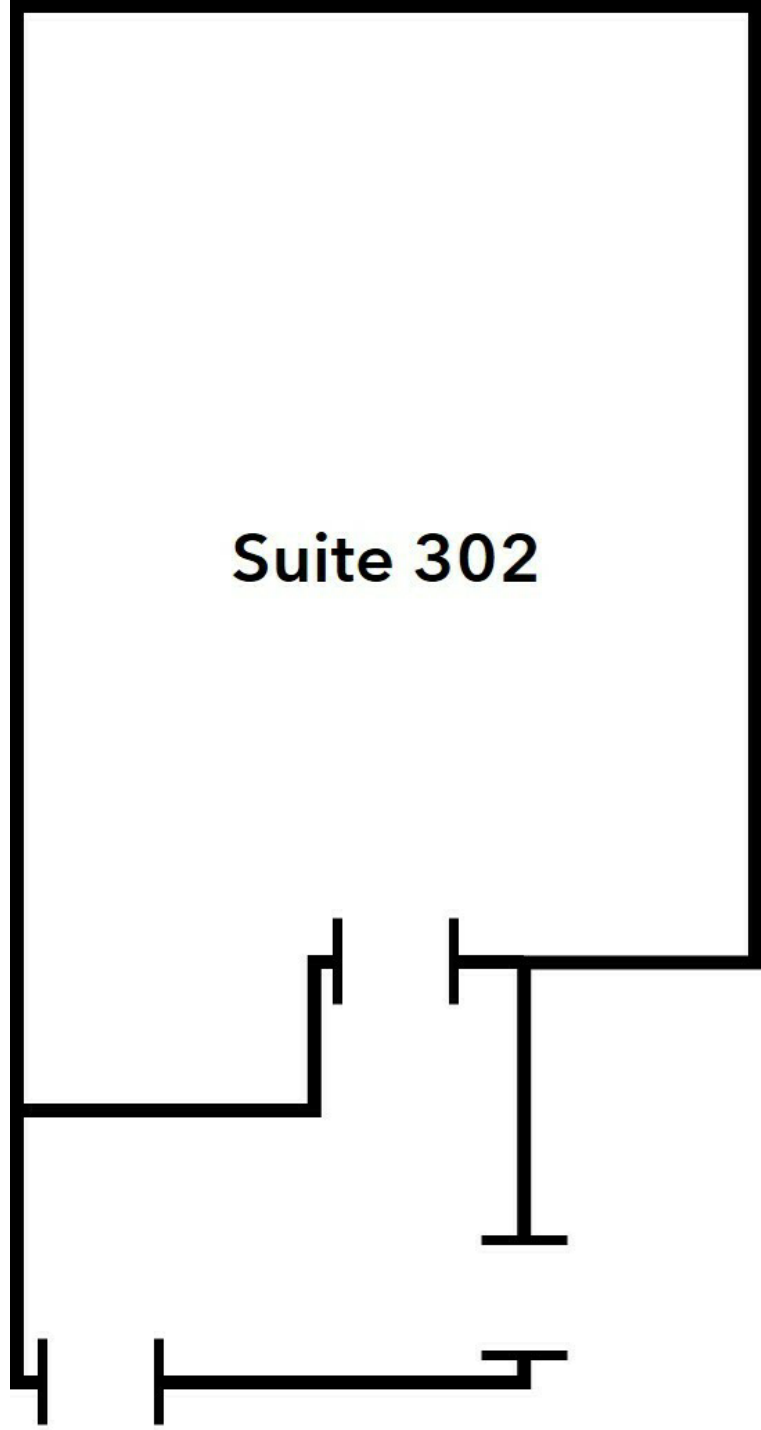
jeffevans@swishercommercial.com

Monument Park Office Suite Downtown Dexter

8031 Main, Suite 302, Dexter, MI 48130



For Lease



Jeff Evans

734.926.0222

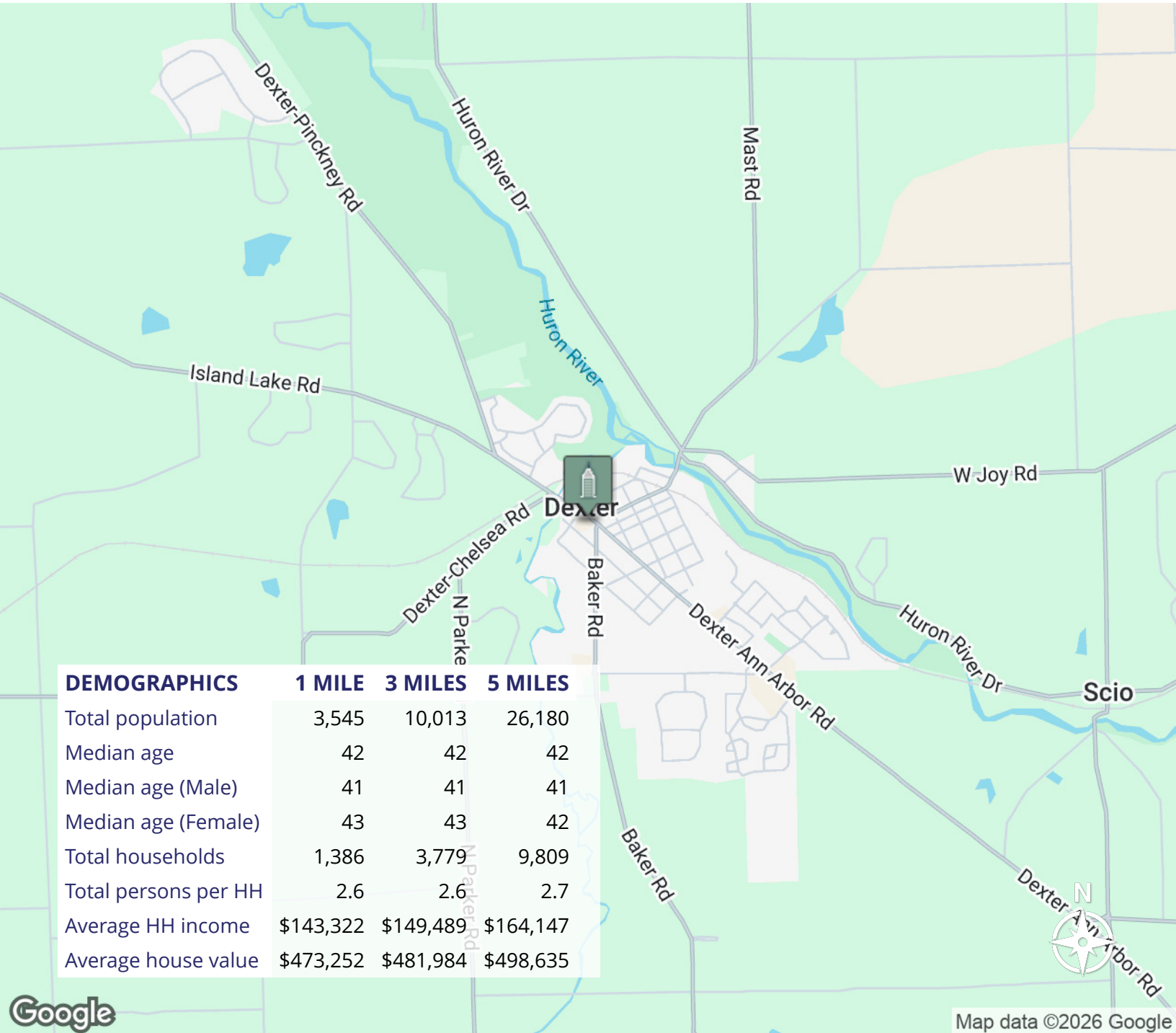
jeffevans@swishercommercial.com

Monument Park Office Downtown Dexter

8031 Main, Dexter, MI 48130



For Lease



Jeff Evans

734.926.0222

jeffevans@swishercommercial.com