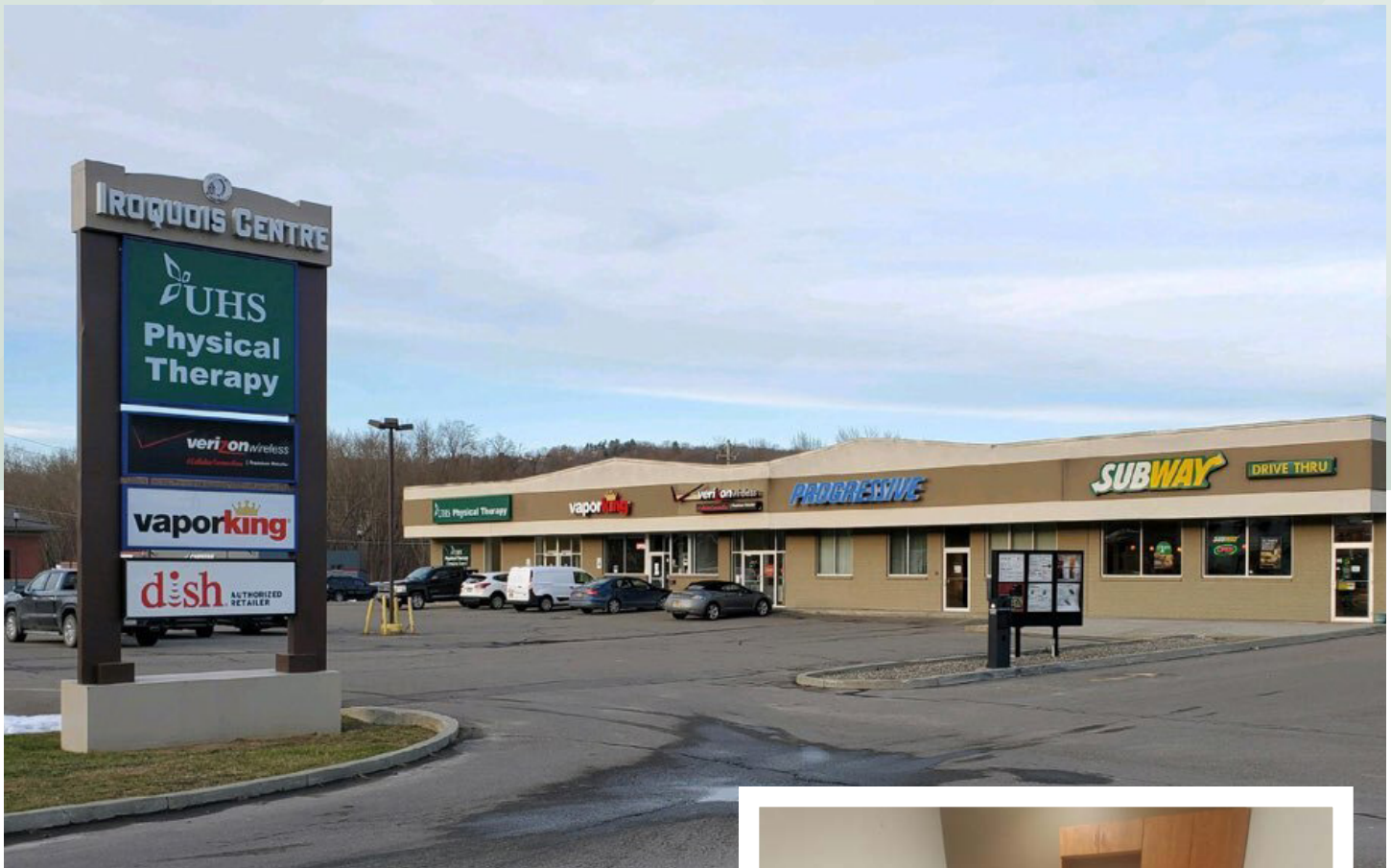


FOR LEASE

Neighborhood Shopping Center

941-947 State Route 17C, Owego, NY 13827



PROPERTY HIGHLIGHTS

- Great visibility
- Close to three major hotels, shopping center, banks, national retailers, and restaurants
- Very close to Lockheed Martin facility - one of the area's largest employers
- Extremely well maintained and managed
- 82 Parking spaces
- Located in the "Power Mile of Owego"
- 3,237 sq. ft
- \$12.00 NNN



3630 George F. Highway Endwell, NY 13760

The information submitted herein is not guaranteed. Although obtained from reliable resources, it is subject to errors, omissions, prior sale and withdrawal from the market without notice. Broker has made no investigation and makes no representation of the property.



Karen Klecar

Licensed Real Estate Associate Broker

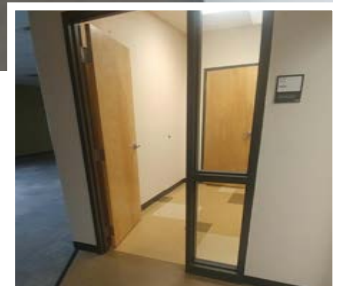
607.624.0143

KarenKlecar@hannacre.com

FOR LEASE

Neighborhood Shopping Center

941-947 State Route 17C, Owego, NY 13827



DEMOGRAPHIC SNAPSHOT

	1 Miles	3 Miles	5 Miles
Population	835	6,813	13,261
Households	348	2,892	5,522
Median HH Income	\$70,791	\$59,184	\$62,906
Average HH Income	\$90,906	\$77,913	\$81,111
Daytime Population	3,010	9,834	15,049



3630 George F. Highway Endwell, NY 13760

The information submitted herein is not guaranteed. Although obtained from reliable resources, it is subject to errors, omissions, prior sale and withdrawal from the market without notice. Broker has made no investigation and makes no representation of the property.



Karen Klecar

Licensed Real Estate Associate Broker

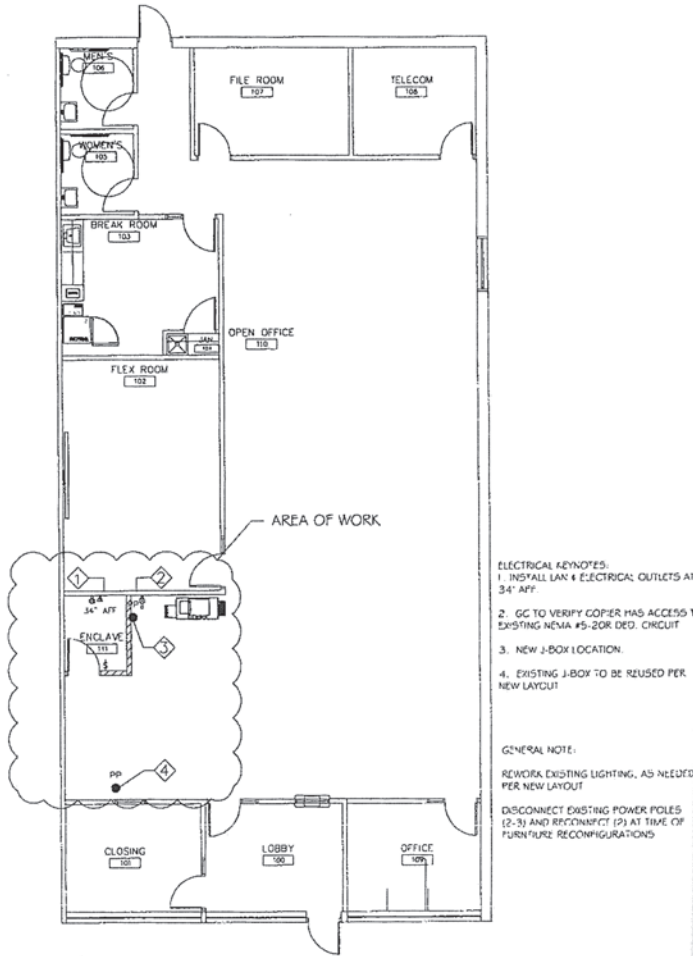
607.624.0143

KarenKlecar@hannacre.com

FOR LEASE

Neighborhood Shopping Center

941-947 State Route 17C, Owego, NY 13827

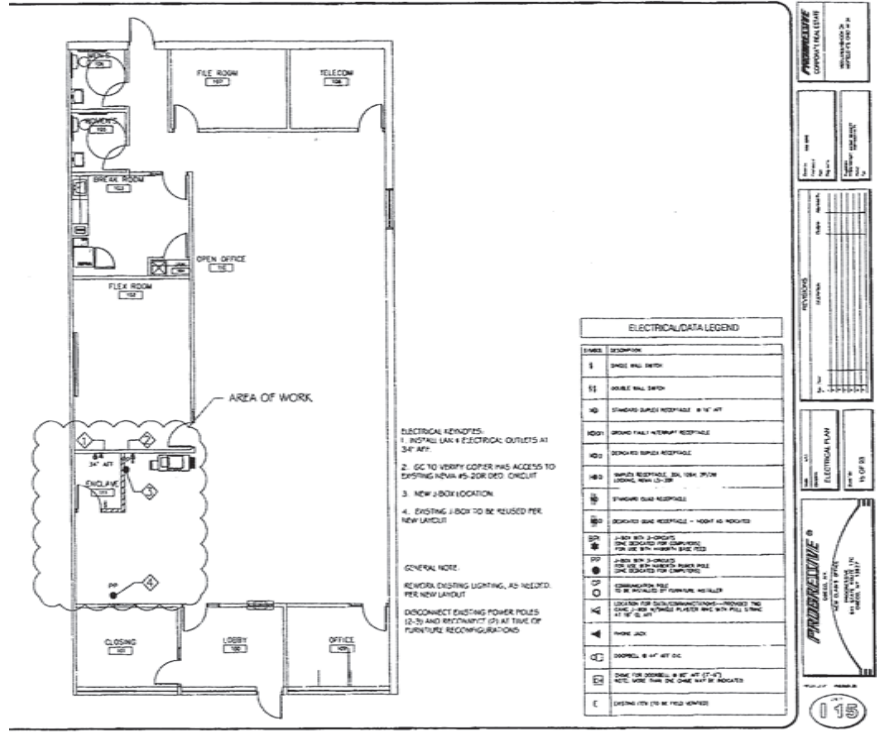


ELECTRICAL KEYNOTES:

1. INSTALL LAN & ELECTRICAL OUTLETS AT 34" AFF
2. GC TO VERIFY COOPER HAS ACCESS TO EXISTING NEMA #5-20R DED. CIRCUIT
3. NEW J-BOX LOCATION
4. EXISTING J-BOX TO BE REUSED PER NEW LAYOUT

GENERAL NOTE:
REWORK EXISTING LIGHTING, AS NEEDED PER NEW LAYOUT

DISCONNECT EXISTING POWER POLES (2-3) AND RECONNECT (2) AT TIME OF FURNITURE RECONFIGURATIONS



ELECTRICAL KEYNOTES:

1. INSTALL LAN & ELECTRICAL OUTLETS AT 34" AFF
2. GC TO VERIFY COOPER HAS ACCESS TO EXISTING NEMA #5-20R DED. CIRCUIT
3. NEW J-BOX LOCATION
4. EXISTING J-BOX TO BE REUSED PER NEW LAYOUT

GENERAL NOTE:
REWORK EXISTING LIGHTING, AS NEEDED PER NEW LAYOUT

DISCONNECT EXISTING POWER POLES (2-3) AND RECONNECT (2) AT TIME OF FURNITURE RECONFIGURATIONS

ELECTRICAL/DATA LEGEND	
SYMBOL	DESCRIPTION
1	SINGLE WALL SWITCH
11	DOUBLE WALL SWITCH
10	STANDARD GANGLER RECEPTACLE - 6" 1P 150V
1001	GROUND FAULT INTERRUPTER RECEPTACLE
1002	DETERMINED GANGLER RECEPTACLE
1003	GANGLER RECEPTACLE - 20A 150V 3P/4W (SPECIAL WIRE 12-3P)
1004	STANDARD GANGLER RECEPTACLE - 1500V 40 AMP
1005	STANDARD GANGLER RECEPTACLE - 1500V 40 AMP
1006	STANDARD GANGLER RECEPTACLE - 1500V 40 AMP
1007	STANDARD GANGLER RECEPTACLE - 1500V 40 AMP
1008	STANDARD GANGLER RECEPTACLE - 1500V 40 AMP
1009	STANDARD GANGLER RECEPTACLE - 1500V 40 AMP
1010	STANDARD GANGLER RECEPTACLE - 1500V 40 AMP
1011	STANDARD GANGLER RECEPTACLE - 1500V 40 AMP
1012	STANDARD GANGLER RECEPTACLE - 1500V 40 AMP
1013	STANDARD GANGLER RECEPTACLE - 1500V 40 AMP
1014	STANDARD GANGLER RECEPTACLE - 1500V 40 AMP
1015	STANDARD GANGLER RECEPTACLE - 1500V 40 AMP
1016	STANDARD GANGLER RECEPTACLE - 1500V 40 AMP
1017	STANDARD GANGLER RECEPTACLE - 1500V 40 AMP
1018	STANDARD GANGLER RECEPTACLE - 1500V 40 AMP
1019	STANDARD GANGLER RECEPTACLE - 1500V 40 AMP
1020	STANDARD GANGLER RECEPTACLE - 1500V 40 AMP
1021	STANDARD GANGLER RECEPTACLE - 1500V 40 AMP
1022	STANDARD GANGLER RECEPTACLE - 1500V 40 AMP
1023	STANDARD GANGLER RECEPTACLE - 1500V 40 AMP
1024	STANDARD GANGLER RECEPTACLE - 1500V 40 AMP
1025	STANDARD GANGLER RECEPTACLE - 1500V 40 AMP
1026	STANDARD GANGLER RECEPTACLE - 1500V 40 AMP
1027	STANDARD GANGLER RECEPTACLE - 1500V 40 AMP
1028	STANDARD GANGLER RECEPTACLE - 1500V 40 AMP
1029	STANDARD GANGLER RECEPTACLE - 1500V 40 AMP
1030	STANDARD GANGLER RECEPTACLE - 1500V 40 AMP
1031	STANDARD GANGLER RECEPTACLE - 1500V 40 AMP
1032	STANDARD GANGLER RECEPTACLE - 1500V 40 AMP
1033	STANDARD GANGLER RECEPTACLE - 1500V 40 AMP
1034	STANDARD GANGLER RECEPTACLE - 1500V 40 AMP
1035	STANDARD GANGLER RECEPTACLE - 1500V 40 AMP
1036	STANDARD GANGLER RECEPTACLE - 1500V 40 AMP
1037	STANDARD GANGLER RECEPTACLE - 1500V 40 AMP
1038	STANDARD GANGLER RECEPTACLE - 1500V 40 AMP
1039	STANDARD GANGLER RECEPTACLE - 1500V 40 AMP
1040	STANDARD GANGLER RECEPTACLE - 1500V 40 AMP
1041	STANDARD GANGLER RECEPTACLE - 1500V 40 AMP
1042	STANDARD GANGLER RECEPTACLE - 1500V 40 AMP
1043	STANDARD GANGLER RECEPTACLE - 1500V 40 AMP
1044	STANDARD GANGLER RECEPTACLE - 1500V 40 AMP
1045	STANDARD GANGLER RECEPTACLE - 1500V 40 AMP
1046	STANDARD GANGLER RECEPTACLE - 1500V 40 AMP
1047	STANDARD GANGLER RECEPTACLE - 1500V 40 AMP
1048	STANDARD GANGLER RECEPTACLE - 1500V 40 AMP
1049	STANDARD GANGLER RECEPTACLE - 1500V 40 AMP
1050	STANDARD GANGLER RECEPTACLE - 1500V 40 AMP
1051	STANDARD GANGLER RECEPTACLE - 1500V 40 AMP
1052	STANDARD GANGLER RECEPTACLE - 1500V 40 AMP
1053	STANDARD GANGLER RECEPTACLE - 1500V 40 AMP
1054	STANDARD GANGLER RECEPTACLE - 1500V 40 AMP
1055	STANDARD GANGLER RECEPTACLE - 1500V 40 AMP
1056	STANDARD GANGLER RECEPTACLE - 1500V 40 AMP
1057	STANDARD GANGLER RECEPTACLE - 1500V 40 AMP
1058	STANDARD GANGLER RECEPTACLE - 1500V 40 AMP
1059	STANDARD GANGLER RECEPTACLE - 1500V 40 AMP
1060	STANDARD GANGLER RECEPTACLE - 1500V 40 AMP
1061	STANDARD GANGLER RECEPTACLE - 1500V 40 AMP
1062	STANDARD GANGLER RECEPTACLE - 1500V 40 AMP
1063	STANDARD GANGLER RECEPTACLE - 1500V 40 AMP
1064	STANDARD GANGLER RECEPTACLE - 1500V 40 AMP
1065	STANDARD GANGLER RECEPTACLE - 1500V 40 AMP
1066	STANDARD GANGLER RECEPTACLE - 1500V 40 AMP
1067	STANDARD GANGLER RECEPTACLE - 1500V 40 AMP
1068	STANDARD GANGLER RECEPTACLE - 1500V 40 AMP
1069	STANDARD GANGLER RECEPTACLE - 1500V 40 AMP
1070	STANDARD GANGLER RECEPTACLE - 1500V 40 AMP
1071	STANDARD GANGLER RECEPTACLE - 1500V 40 AMP
1072	STANDARD GANGLER RECEPTACLE - 1500V 40 AMP
1073	STANDARD GANGLER RECEPTACLE - 1500V 40 AMP
1074	STANDARD GANGLER RECEPTACLE - 1500V 40 AMP
1075	STANDARD GANGLER RECEPTACLE - 1500V 40 AMP
1076	STANDARD GANGLER RECEPTACLE - 1500V 40 AMP
1077	STANDARD GANGLER RECEPTACLE - 1500V 40 AMP
1078	STANDARD GANGLER RECEPTACLE - 1500V 40 AMP
1079	STANDARD GANGLER RECEPTACLE - 1500V 40 AMP
1080	STANDARD GANGLER RECEPTACLE - 1500V 40 AMP
1081	STANDARD GANGLER RECEPTACLE - 1500V 40 AMP
1082	STANDARD GANGLER RECEPTACLE - 1500V 40 AMP
1083	STANDARD GANGLER RECEPTACLE - 1500V 40 AMP
1084	STANDARD GANGLER RECEPTACLE - 1500V 40 AMP
1085	STANDARD GANGLER RECEPTACLE - 1500V 40 AMP
1086	STANDARD GANGLER RECEPTACLE - 1500V 40 AMP
1087	STANDARD GANGLER RECEPTACLE - 1500V 40 AMP
1088	STANDARD GANGLER RECEPTACLE - 1500V 40 AMP
1089	STANDARD GANGLER RECEPTACLE - 1500V 40 AMP
1090	STANDARD GANGLER RECEPTACLE - 1500V 40 AMP
1091	STANDARD GANGLER RECEPTACLE - 1500V 40 AMP
1092	STANDARD GANGLER RECEPTACLE - 1500V 40 AMP
1093	STANDARD GANGLER RECEPTACLE - 1500V 40 AMP
1094	STANDARD GANGLER RECEPTACLE - 1500V 40 AMP
1095	STANDARD GANGLER RECEPTACLE - 1500V 40 AMP
1096	STANDARD GANGLER RECEPTACLE - 1500V 40 AMP
1097	STANDARD GANGLER RECEPTACLE - 1500V 40 AMP
1098	STANDARD GANGLER RECEPTACLE - 1500V 40 AMP
1099	STANDARD GANGLER RECEPTACLE - 1500V 40 AMP
1100	STANDARD GANGLER RECEPTACLE - 1500V 40 AMP



3630 George F. Highway Endwell, NY 13760

The information submitted herein is not guaranteed. Although obtained from reliable resources, it is subject to errors, omissions, prior sale and withdrawal from the market without notice. Broker has made no investigation and makes no representation of the property.



Karen Klecar
Licensed Real Estate Associate Broker

607.624.0143

KarenKlecar@hannacre.com