

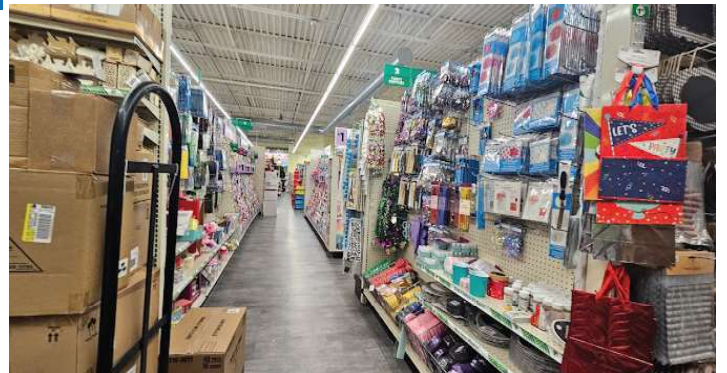
FOR LEASE - PRIME HEMPSTEAD RETAIL



555 Greenwich St. , Hempstead, NY 11550

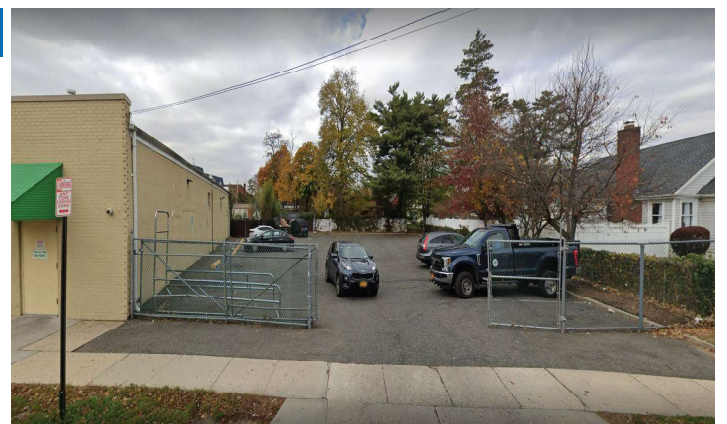
BUILDING INFORMATION

Address:	555 Greenwich St., Hempstead, NY 11550
Year Built/Renovated:	1967/2015
GLA:	9,408 SF
Parcel Size:	48 Acres
Parking:	Rear fenced with 25 Spaces
Zoning:	Bus-B



HIGHLIGHTS

- In close proximity to the Southern State Parkway and downtown Hempstead
- Suitable for retail/medical use
- Dollar Tree (currently operating) will leave all existing shelving and refrigeration units in the space
- Previous tenant renovated the building in 2015 including a new roof, HVAC system, parking lot resurfacing, new interior/exterior concrete slab as well as a newly installed alarm and surveillance system
- Lease rate does not include utilities, property expenses or building services



For more information:

Barry Chamas

Senior Sales Associate

Office: (516) 653-6317

Email: Barry@silberproperties.com



Silber Investment Properties
125 Newtown Rd, Suite 300 | Plainview, NY 11803
www.silberproperties.com