

FOR GROUND LEASE OR BUILD TO SUIT



## PROPERTY DETAILS

1992 South Geneva Road, Orem, Utah 84058

- 2.91 Acres
- Close Proximity to Provo Airport and Provo High School
- Nearby Multi Family units
- Traffic Counts: Geneva Road- 13,260 ADT
- Email Agent for Pricing

## 2025 DEMOS



### EST. POPULATION

1 MILE » **16,825**  
3 MILE » **108,427**  
5 MILE » **228,202**



### EST. HOUSEHOLDS

1 MILE » **4,810**  
3 MILE » **34,113**  
5 MILE » **69,833**



### EST. MEDIAN HH INCOME

1 MILE » **\$83,661**  
3 MILE » **\$86,825**  
5 MILE » **\$84,052**

# NEWMARK



## MOUNTAIN WEST

### LANCE PENDLETON

lpendleton@newmarkmw.com  
direct 801.456.8808  
[View Profile](#)

### MATT NORDELL

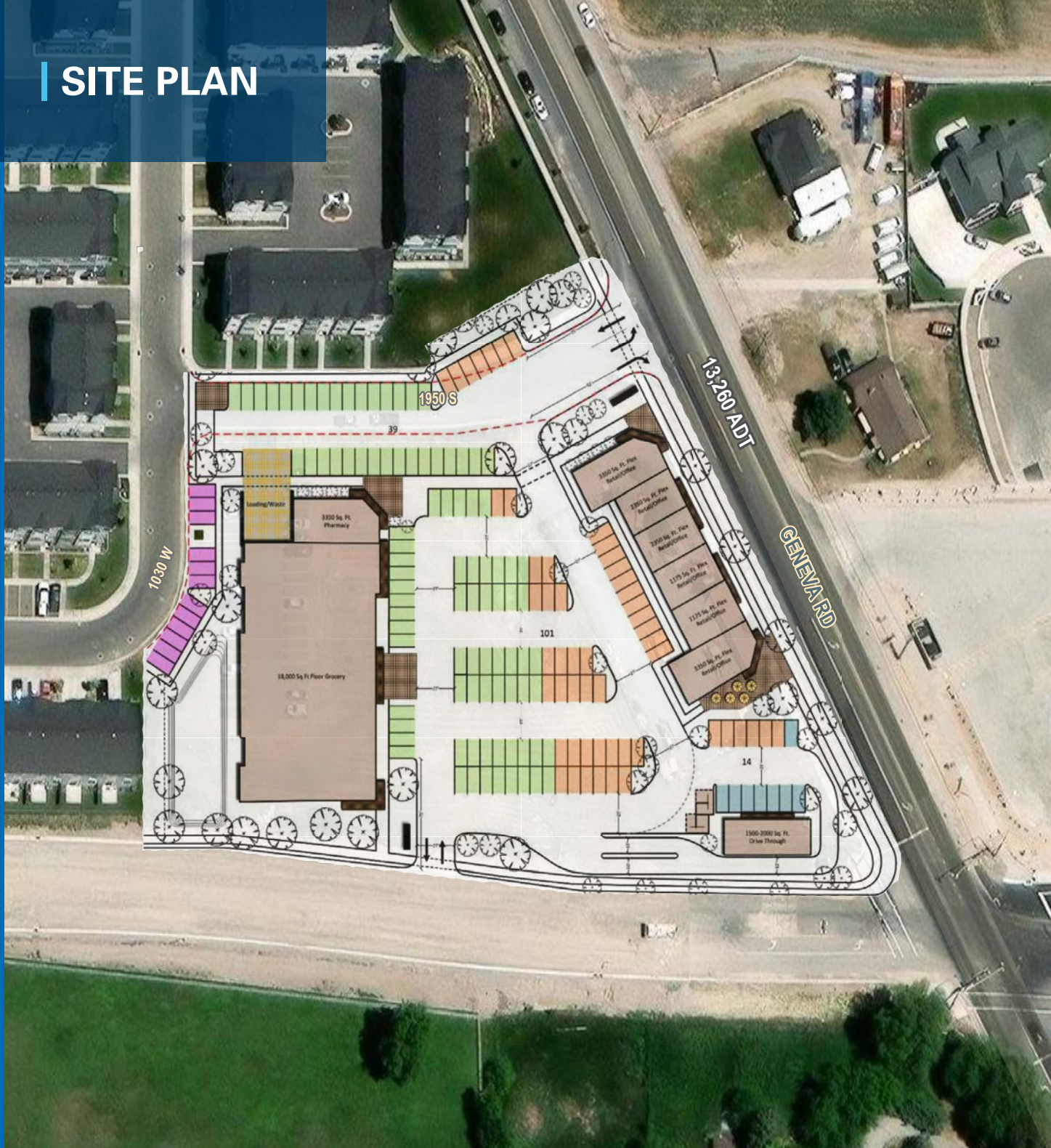
mnordell@newmarkmw.com  
direct 801.837.9590  
[View Profile](#)

**FULL SERVICE  
COMMERCIAL REAL ESTATE**  
312 East South Temple  
Salt Lake City, Utah 84111  
Office 801.456.8800  
[www.newmarkmw.com](http://www.newmarkmw.com)



# LAKEVIEW COMMERCIAL PADS

## SITE PLAN



# NEWMARK

## MOUNTAIN WEST

**LANCE PENDLETON**

[lpendleton@newmarkmw.com](mailto:lpendleton@newmarkmw.com)

direct 801.456.8808

[View Profile](#)

**MATT NORDELL**

[mnordell@newmarkmw.com](mailto:mnordell@newmarkmw.com)

direct 801.837.9590

[View Profile](#)

**FULL SERVICE  
COMMERCIAL REAL ESTATE**

312 East South Temple

Salt Lake City, Utah 84111

Office 801.456.8800

[www.newmarkmw.com](http://www.newmarkmw.com)

This statement with the information it contains is given with the understanding that all negotiations relating to the purchase, renting or leasing of the property described above shall be conducted through this office. The above information while not guaranteed has been secured from sources we believe to be reliable.



## Multi Family Permits

2020 (3)  
2021 (12)  
2022 (0)  
2023 (0)  
2024 (0)

## Single Family Permits

2020 (65)  
2021 (44)  
2022 (47)  
2023 (48)  
2024 (35)

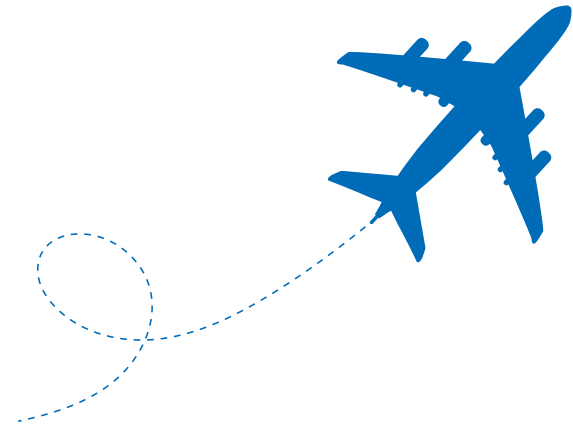
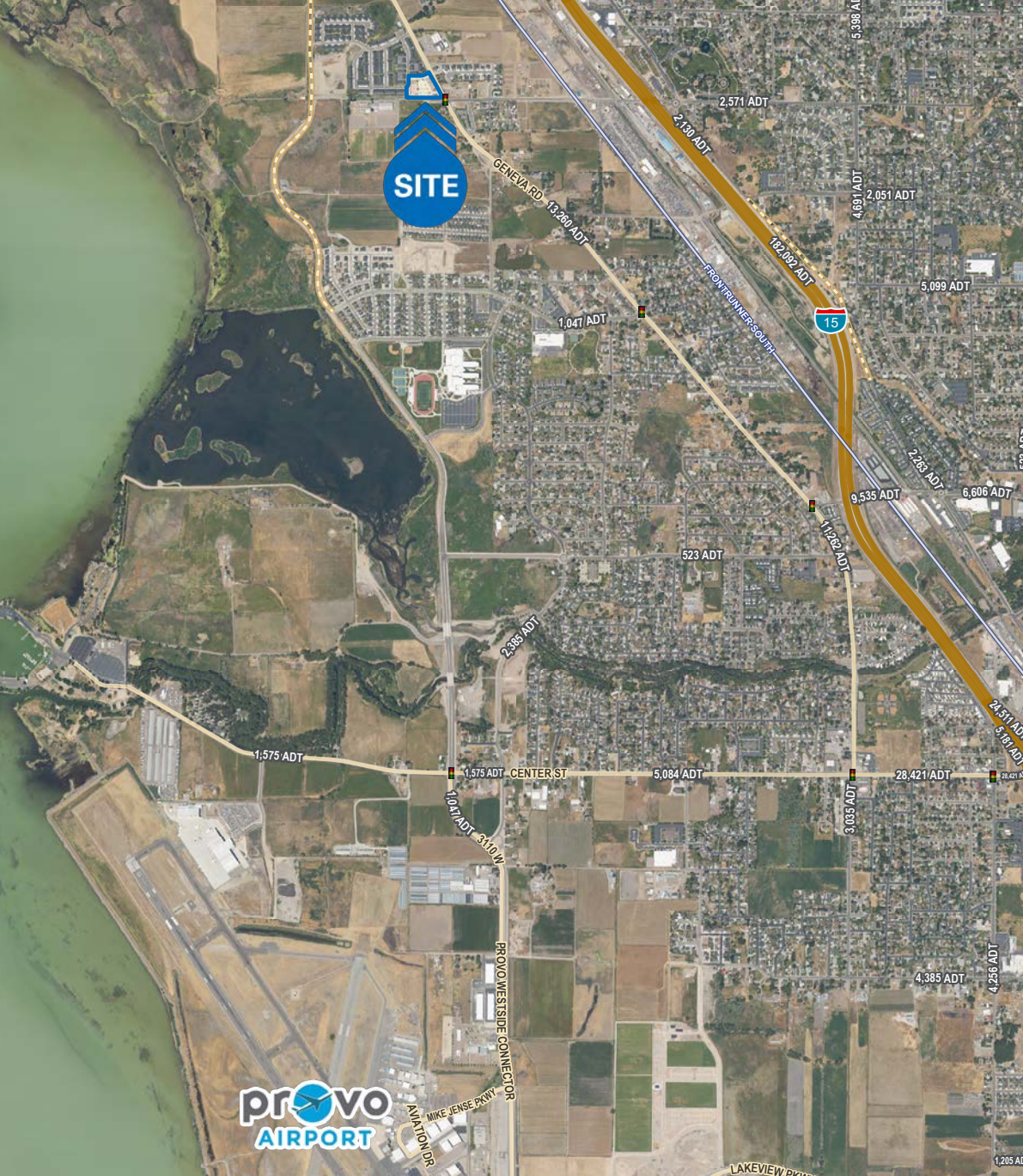


**LANCE PENDLETON**  
lpendleton@newmarkmw.com  
direct 801.456.8808  
[View Profile](#)

**MATT NORDELL**  
mnordell@newmarkmw.com  
direct 801.837.9590  
[View Profile](#)

**FULL SERVICE  
COMMERCIAL REAL ESTATE**  
312 East South Temple  
Salt Lake City, Utah 84111  
Office 801.456.8800  
[www.newmarkmw.com](http://www.newmarkmw.com)





**The Provo Airport** is located in Utah County, Utah, about 5 miles west of downtown Provo and 43 miles south of Salt Lake City.

The airport covers an area of 1,330 acres and has a single asphalt runway that is capable of accommodating large aircraft such as Boeing 747s.

In 2020, the Provo Airport served over 282,000 passengers and had over 24,000 aircraft operations (takeoffs and landings). Since the opening of the expansion in July 2022, more than 300,000 passengers have come through. By the end of 2023 they anticipate seeing up to 800,000 passengers.

The Provo Airport is an important economic driver for the region, supporting businesses in industries such as tourism, manufacturing, and distribution. Additionally, the airport has significant potential for future development, particularly in the areas of air cargo and general aviation.



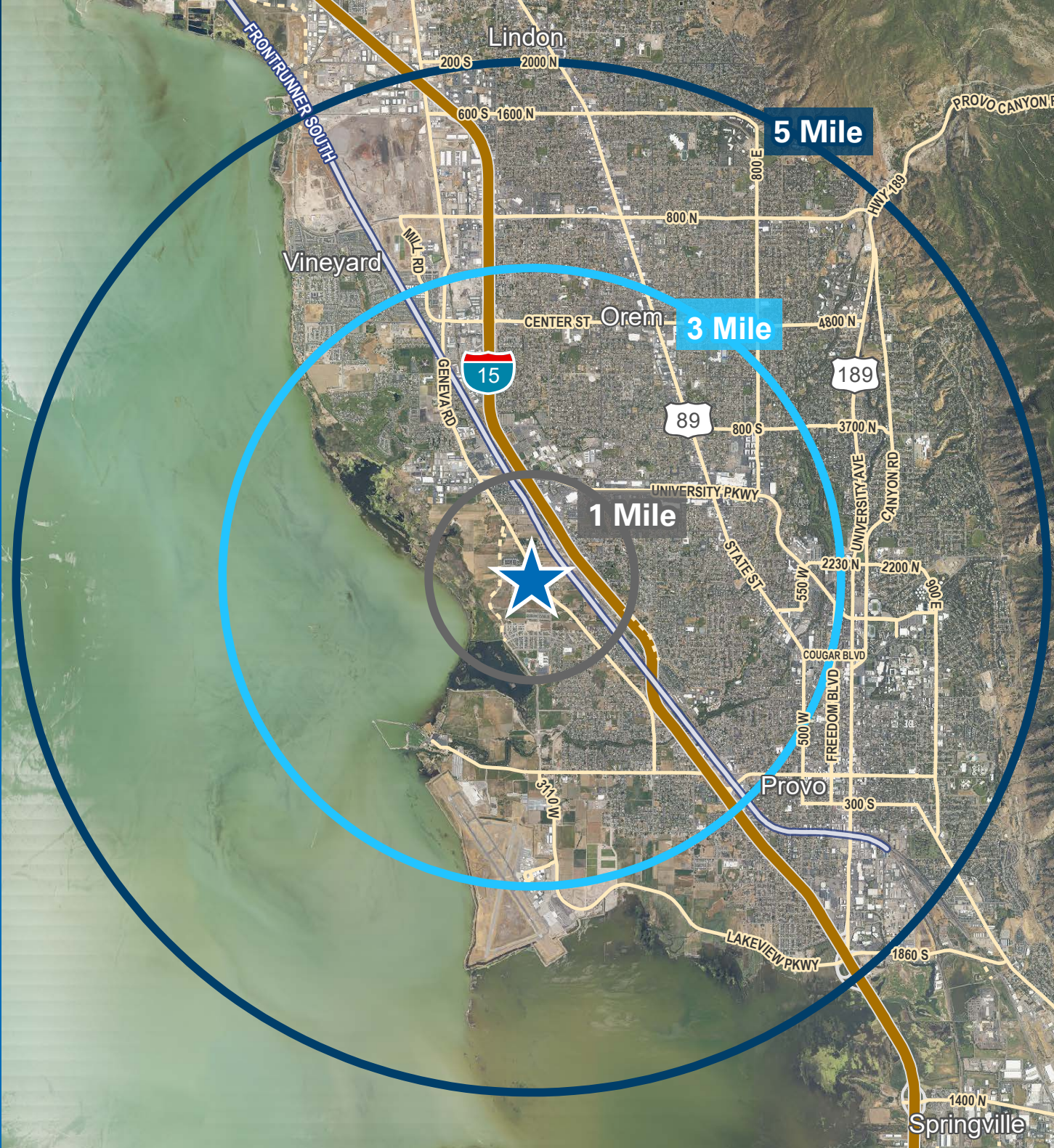
**LANCE PENDLETON**  
lpendleton@newmarkmw.com  
direct 801.456.8808  
[View Profile](#)

**MATT NORDELL**  
mnordell@newmarkmw.com  
direct 801.837.9590  
[View Profile](#)

**FULL SERVICE  
COMMERCIAL REAL ESTATE**  
312 East South Temple  
Salt Lake City, Utah 84111  
Office 801.456.8800  
[www.newmarkmw.com](http://www.newmarkmw.com)



# LAKEVIEW COMMERCIAL PADS



# NEWMARK

## MOUNTAIN WEST

**LANCE PENDLETON**

[lpendleton@newmarkmw.com](mailto:lpendleton@newmarkmw.com)

direct 801.456.8808

[View Profile](#)

**MATT NORDELL**

[mnordell@newmarkmw.com](mailto:mnordell@newmarkmw.com)

direct 801.837.9590

[View Profile](#)

**FULL SERVICE  
COMMERCIAL REAL ESTATE**

312 East South Temple

Salt Lake City, Utah 84111

Office 801.456.8800

[www.newmarkmw.com](http://www.newmarkmw.com)

This statement with the information it contains is given with the understanding that all negotiations relating to the purchase, renting or leasing of the property described above shall be conducted through this office. The above information while not guaranteed has been secured from sources we believe to be reliable.